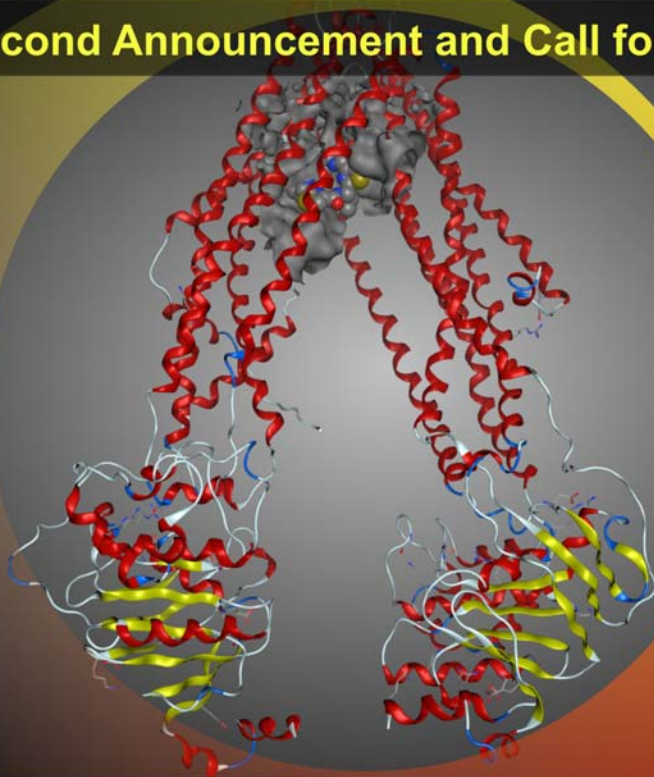


Second Announcement and Call for Posters



Drug Transporters symposium: target or avoid?

Thursday, 13th November 2014

Lilly Research Centre, Erl Wood,
Windlesham, Surrey, UK

Organised by RSC Biological and Medicinal Chemistry Sector



Biological & Medicinal



Chemistry Sector

Lilly

Synopsis

Cell surface transporters play a key role in human health and disease, both through their impact on drug disposition and as therapeutic targets in their own right. This meeting, which we hope will be the first of a regular series, should be of interest to medicinal chemists, DMPK scientists and other workers with interests on the impact of transporters on human health.

Features of the Meeting

The conference programme will cover:

- Lectures on transporter structural biology, genetics, their impact on drug disposition and as therapeutic targets
- Poster session
- Related trade exhibition

Call for Posters

Abstracts for poster presentation are invited, and a template is available on the event website. The closing date is 30th September, and posters will be displayed throughout the meeting.

Confirmed Speakers and Topics

Geoff Chang (UC San Diego) USA: Transporter structural biology

David Collier (Lilly) UK: Transporter polymorphisms

Jan Passchier (Imanova): Transporter imaging

Emmanuel Pinard (Roche): Discovery of Bitopertin for the treatment of schizophrenia

Simone Stahl (AstraZeneca) UK: Hepatic transporters and drug safety.

Registration and Students

Registration is now open, and some student bursaries are available.

Registration fees up until 31 Jul

£100	RSC member early
£125	Non-member early
£45	RSC student* member early
£65	Student* non-member early

Registration fees 1st Aug to 8th Oct

£130	RSC member standard
£165	Non-member standard
£60	RSC student* member std
£85	Student* non-member std

Exhibition stands

£450	Exhibition stand (including one full delegate)
£525	Exhibition stand (including two trade stand staff)

£30 Late booking fee
from 9th October

Venue and Travel

The Lilly Research Centre, Erl Wood, is a 30-minute taxi-ride from Heathrow airport, a 50-minute train journey from London (to Ascot), and is easily accessible by car (M3, junction 3).

Sponsorship and Exhibition

There will be a relevant trade exhibition, and further details are available from the secretariat. Sponsors are encouraged to support this new event.

Secretariat Contact

Maggi Churchouse, 3 East Barn, Market Weston Road,
Theltham, Diss IP22 1JJ, UK
Telephone and fax: +44 (0)1359 221004
E-mail: maggi@maggichurchouseevents.co.uk

Acknowledgements

We are grateful to our principal sponsor,
Lilly UK

Organising Committee

Sharan Bagal, Pfizer
Adrian Hall, UCB
Manisha Naik, Lilly
Andrew Williams, Lilly (chairman)

Website Addresses

www.maggichurchouseevents.co.uk/bmcs
www.RSC.org/BMCS