

# Global Change and Biosphere Interactions

THE UNIVERSITY of *York*

*50 years of  
changing the world*



British Ecological Society  
— CELEBRATING 100 YEARS —

**A major international scientific meeting to mark:**

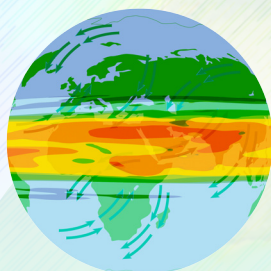
**The Centenary of the British Ecological Society (BES) and**

**The Launch of the York Environmental Sustainability Institute (YESI)**

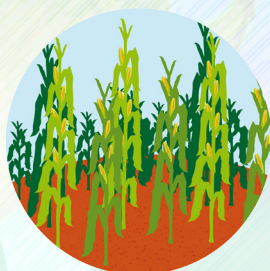
*University of York, 08-09 April 2013*



*Sustainable  
environments*



*Global  
change*



*Future food  
and fuel*

Focused on sustainable solutions to global environmental change, the conference will feature major international speakers covering current advances in our understanding of the past, present and future consequences of human impacts on the earth system.

Contributions will reach across disciplines, spanning physical, natural, social sciences and humanities to address the causes and consequences of global change and the implications for policy.

There will be extensive opportunities for discussing the role of interdisciplinary research in understanding the impacts of global change and identifying new research which will to allow us to mitigate and adapt to these impacts.

## **Speakers include:**

- Prof Georgina Mace, CBE, FRS, President of BES
- Prof Johan Rockström, Executive Director Stockholm Resilience Centre
- Prof Sir John Lawton, CBE, FRS
- Prof Sarah Harper
- Prof Mark Pagani
- Prof Peter Cox
- Prof Mike Hulme
- Prof Susan Owens, OBE, FBA
- Prof Alastair Fitter CBE, FRS
- Prof Chris Thomas FRS
- Prof Dave Raffaelli
- Prof Matthew Collins
- Prof Phil Ineson
- Prof Ally Lewis
- Prof Ian Graham
- Prof Jane Hill
- Prof Sue Hartley, Director YESI

**Register now at [www.yesibes.eventbrite.co.uk](http://www.yesibes.eventbrite.co.uk)**

**Further details: [www.york.ac.uk/yes](http://www.york.ac.uk/yes)**

**Julie Hodgkinson - [julie@britishecologicalsociety.org](mailto:julie@britishecologicalsociety.org)**

**Sheila Davitt-Betts - [sheila.davitt-betts@york.ac.uk](mailto:sheila.davitt-betts@york.ac.uk)**