

# General Information

## Accommodation

Bedrooms have been held at four 3\* and 4\* hotels, all within easy reach of the conference venue. Discounted prices range from CHF165 to CHF265, and these rates will be available until mid-February/early March (depending on hotel). All these hotels provide mobility tickets which allow free travel on public transport in Basel. A list of hotel rooms held is available from the website and from the Secretariat.

## Venue and Travel

The Auditorium, Fabrikstrasse 6, Novartis Campus, Basel, Switzerland. Novartis is easily accessible from the airport and railway station - just 15 minutes from both locations by taxi, tram or bus. The site is also easily accessible from nearby motorways, and there is plenty of on-site parking. Further travel information is available on the website.

## Conference Dinner

The conference dinner will be held on 15th April in the Gilgenstube at the Safran Zunft Restaurant in Basel, an historical building used by guild of spice traders, now an up-market restaurant offering Swiss and regional specialities. The cost of the conference dinner is £80.

## Organising Committee

**Helena Danielson**, Uppsala University

**Stephen East**, Evotec

**Adrian Hall**, Eisai

**Fionna Martin**, Lilly

**Richard Sedrani**, Novartis

**Steve Swallow**, AstraZeneca, chairman

## Contact/Secretariat

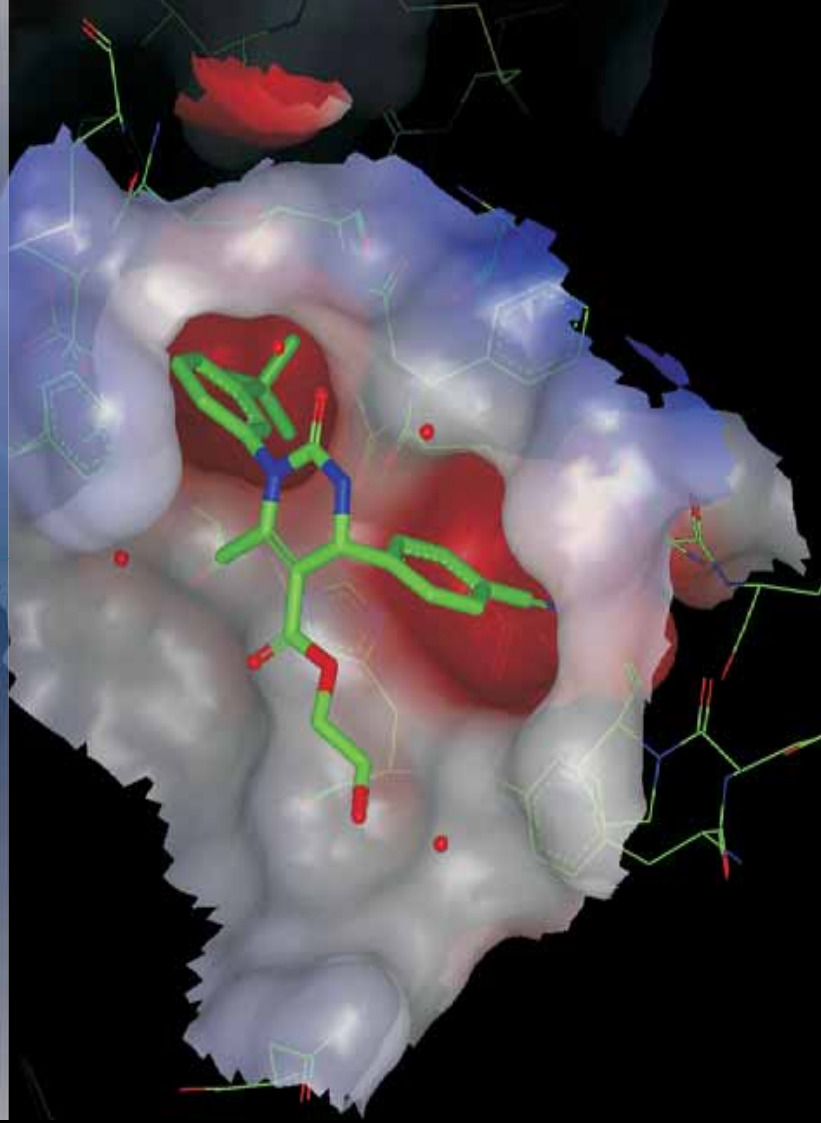
Maggi Churchose, 3 East Barn, Market Weston Road, Thelthetham, Diss IP22 1JJ  
telephone and fax +44 (0)1359 221004, [maggi@maggichurchoseevents.co.uk](mailto:maggi@maggichurchoseevents.co.uk)

Website: [www.maggichurchoseevents.co.uk/bmcs](http://www.maggichurchoseevents.co.uk/bmcs)  
and [www.rsc.org/bmcs](http://www.rsc.org/bmcs)

## Data protection

The information you supply will be used for the administration of the meeting. A list of participants' names and addresses will be distributed at the conference. If you DO NOT wish your address to be included, please indicate when registering.

Final announcement



# Proteinase 2013

8<sup>th</sup> RSC-SCI Symposium on Proteinase Inhibitor Design

Monday-Tuesday, 15<sup>th</sup>-16<sup>th</sup> April 2013

Basel, Switzerland, hosted by Novartis

# Programme

## Introduction

This symposium will cover progress in the design and synthesis of protease inhibitors for a diverse range of disease indications, while also covering a range of novel drug discovery activities: from 'Molecules to Medicines'.

### Monday, 15th April

09.00	Protease-directed drug discovery
10.00	<b>Joerg Eder</b> , Novartis, Switzerland To be confirmed
10.45	<b>Benedikt Kessler</b> , University of Oxford, UK Refreshments
11.15	$\beta$ -secretase inhibitors for the treatment of Alzheimer's disease
12.00	<b>Brian O'Neill</b> , Pfizer, USA Optimization of $\gamma$ -secretase modulators through variation of scaffolds
12.45	<b>Thomas Lübbers</b> , Roche, Switzerland Lunch
13.45	Discovery of a novel notch inhibitor
14.30	<b>Warren J Porter</b> , Lilly, USA Application of chemical biology in the discovery of fatty acid amide hydrolase (FAAH) inhibitors and $\gamma$ -secretase modulators (GSMs)
15.15	<b>Douglas S Johnson</b> , Pfizer, USA Flash poster presentations
15.45	Refreshments and poster session
16.30	Discovery of peptide deformylase inhibitor GSK1322322, a novel mechanism of action antibiotic
17.15	<b>Kelly Aubart</b> , GlaxoSmithKline, USA Close
19.30	Conference dinner

### Tuesday, 16th April

08.45	Discovery and development of Odanacatib: a selective cathepsin K Inhibitor for the treatment of osteoporosis
09.45	<b>Shawn Stachel</b> , Merck, USA Discovery of potent, orally-bioavailable nonpeptide Cathepsin S inhibitor lacking interactions with catalytic cysteine
10.30	<b>Prabhakar K Jadhav</b> , Lilly, USA Refreshments
11.15	N-arylpyridones: discovery and development of non-electrophilic inhibitors of human neutrophil elastase
11.45	<b>Peter Sjö</b> , AstraZeneca, Sweden Silencing HCV with a potent and selective irreversible protease inhibitor
12.30	<b>Deqiang Niu</b> , Celgene Avilomics Research, USA Lunch
13.30	Novel allosteric inhibitors of the HCV full length NS3/4a protein
14.15	<b>David Norton</b> , Astex, UK From transition state analogues to fragments - drug discovery using SPR biosensor technology
15.00	<b>Helena Danielson</b> , Beactica / Uppsala University, Sweden Molecular recognition in protein-ligand binding: what drives the binding?
16.00	<b>Gerhard Klebe</b> , Philipps-University, Germany Close

# Additional Information

## Call for posters

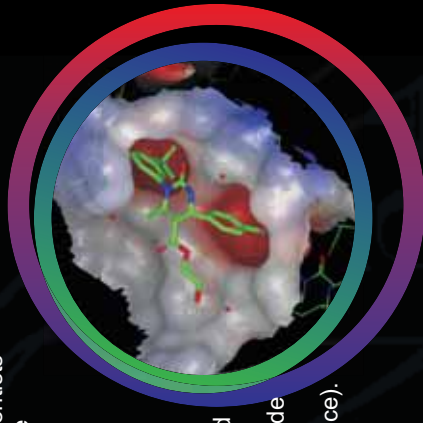
Posters are seen as an important part of the meeting and will be displayed throughout. Poster sessions will take place at lunchtime on both days and during a dedicated session on Monday afternoon. Offer of posters relevant to the themes of the meeting are invited. Please submit a one-page abstract in Word format, to reach the Secretariat by 24th February. A template is available on the website.

## Who should attend

This meeting is aimed at medicinal chemists and other scientists interested in furthering their knowledge of proteases in the context of drug discovery.

## Registration

Registration is now open. Fees currently range from £95 for student members of the RSC and SCI to £395 for non-members. Early-bird rates are available until 7th February, and late charges apply for payment received from 1st March onwards. Discounted rates are available for members of the RSC and SCI. Payment may be made by card (online), or by cheque or bank transfer (please complete and return a registration form to receive an invoice). Please refer to the website for our Cancellation Policy.



## Students and bursaries

Discounted rates will be offered to RSC and SCI student members.

## Exhibition opportunities

We are pleased to be able to offer exhibitor spaces at this event, and the exhibitor fee of £500 includes one delegate's attendance. Exhibitors may display roller banners only, and only a few stands are available.

## Sponsors

Special thanks to Novartis for hosting this event. Additional sponsors would be welcomed.

