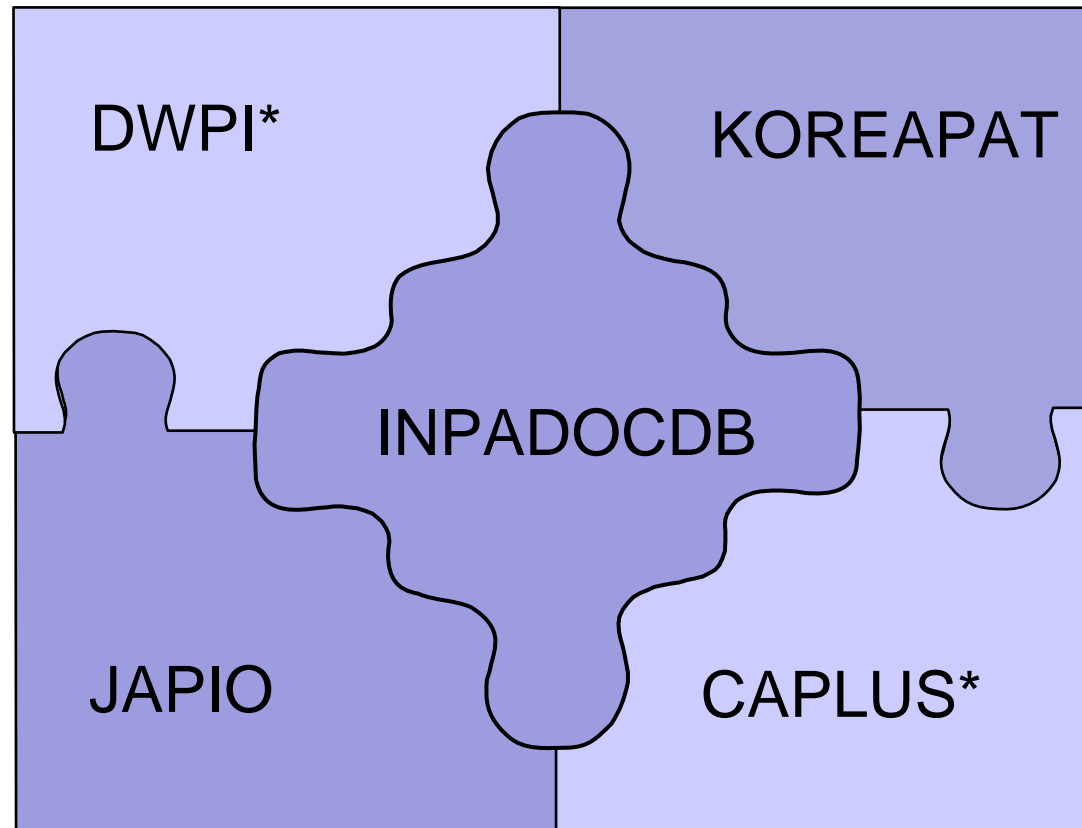




STN[®]

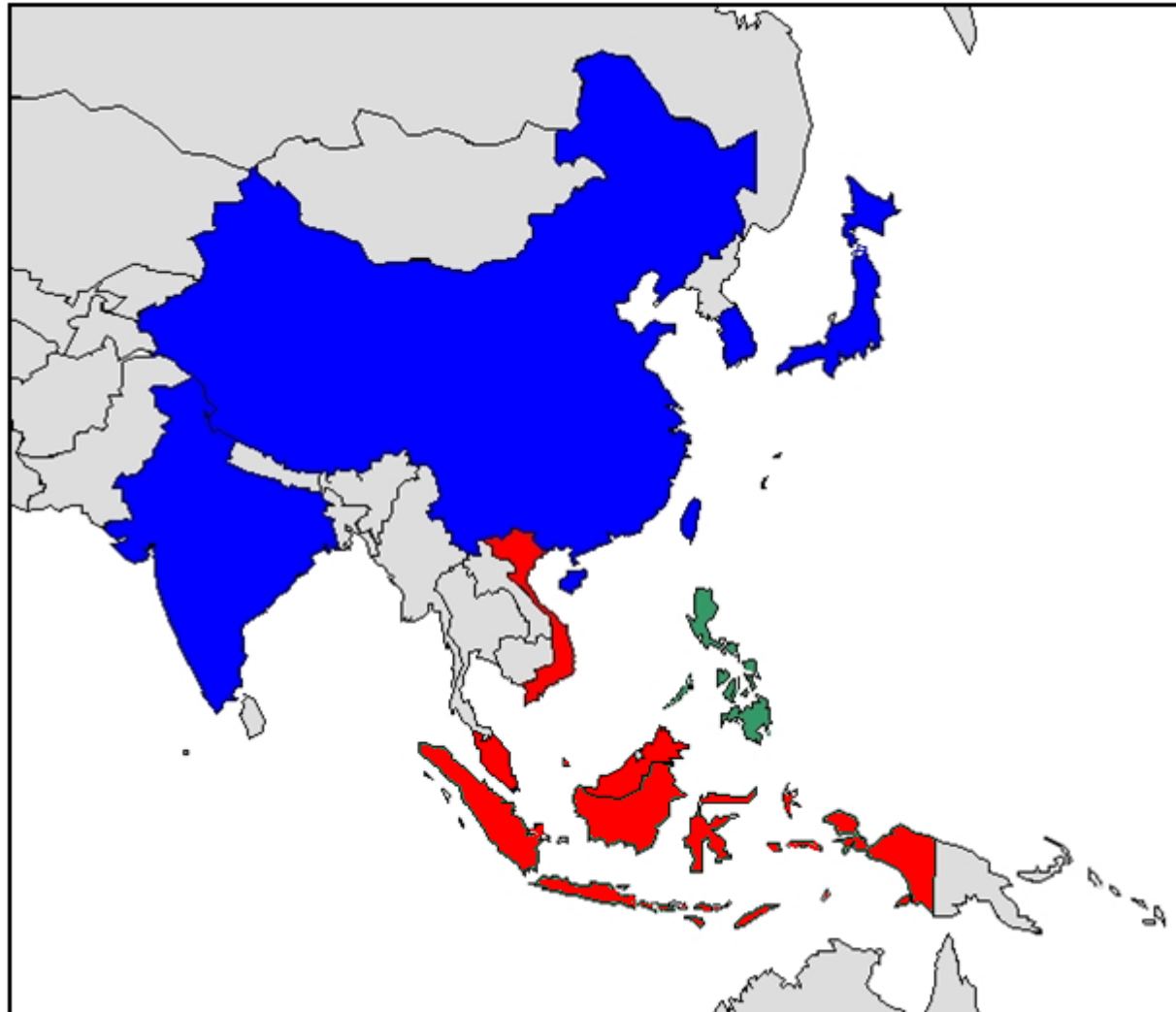
Patent Information from East
Asia on STN

STN integrates value-added* and first level patent information from East Asia ²



STN provides Patents and Utility models from all major Asian Patent Authorities

3



WPINDEX CAPLUS
INPADOC

JP CN KR

TW SG IN

INPADOC CAPLUS

HK

INPADOC
WPINDEX

PH

INPADOC

VN MY ID

Value-added patent data for Asia are produced by CAS and Thomson Reuters

4

- Newly written database record in English is created to facilitate retrieval and relevance checking
 - Enhanced meaningful title and patent-focused abstract reveals the actual invention
 - Standardized bibliographic data
 - Additional assignments of classifications, categories or controlled terminology enhance retrieval (e.g. manual codes - DWPI, controlled terms - CAPLUS)
 - Substance-specific indexing for chemical and biotech patents: specific chemical and Markush structures and biosequences

Patent Information from China



5

- **Highlights on STN**

- Coverage:

- **Invention patents** covered from 1985 (DWPI, CAPLUS, INPADOCDB)
 - **Utility models**: CAPLUS since 2006, DWPI since 2007 and INPADOCDB since 1985
 - English translations of **all claims** for invention patents and utility models from mid 2008 (DWPI)

- **High timeliness** (CAPLUS):

- bibliography and English abstract **within 14 days**
 - deep substance and subject indexing < 50 days

CAPLUS provides very timely data from China⁶

AN 2009:37797 CAPLUS
 DN 150:129038
 ED Entered STN: 12 Jan 2009
 TI Bortezomib and alkylating agent composite sustained-release injection with drug delivery delayed greatly and preparation method thereof
 IN Hou, Hongchun; Sun, Qiming; Sun, Zhongxian
 PA Jinan Jifu Pharmtech Co., Ltd., Peop. Rep. China
 CC 63-6 (Pharmaceuticals)

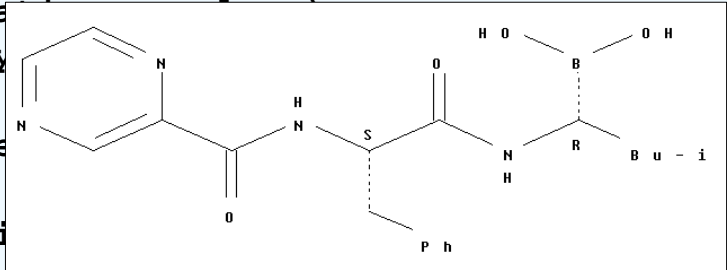
PATENT NO.	KIND	DATE	APPLICATION NO.	DATE
-----	----	-----	-----	-----
PI CN 101336926	A	20090107	CN 2008-10303113	20080728
PRAI CN 2008-10303113		20080728		

AB The title sustained-release injection comprises sustained-release microsphere and solvent. The sustained-release microsphere comprises antitumor composition 0.5-60, release-sustaining adjuvant 40-99, and suspending agent 0-30%. The solvent is common solvent or specific solvent containing suspending agent. The antitumor agent is

 IT Prostate gland, neoplasm
 (carcinoma; preparation of sustained-release injection containing bortezomib and alkylating agent for treating neoplasm)
 IT 50-18-0, Cyclophosphamide 51-18-3, Triethylamine
 179324-69-7, Bortezomib
 RL: PAC (Pharmacological activity); THU (Theoretical study); BU (Biological study); USES (Uses)
 (preparation of sustained-release injection containing bortezomib and alkylating agent for treating neoplasm)

Bibliography and abstract were available 5 days after publication

Substance and subject indexing were available in 29 days.



DWPI provides value-added data for Chinese Invention Patents and Utility Models

AN 2008-J11082 [52] WPINDEX
TI Motor communication connection device, has car combined instrument and body control module connected with diagnosis device by interface circuit that is connected with car combined instrument and body control module by k-line
IN CAO S; GE Y; HU D; XU J; YAO X
PA (QIRU-N) QIRUI AUTOMOBILE CO LTD
PI **CN 201084875 Y** 20080709 (200852)
ADT CN 201084875 Y CN 2007-20040464U 20070721
PRAI CN 2007-20040464U 20070721
IPCI H01R0024-00 [I,C]; H01R0024-10 [I,A]; H04B0001-38 [I,A]; H04B0001-38 [I,C]
AB CN 201084875 Y UPAB: 20080815

MAXG MEMB display format

Records include a DWPI value-added abstract and selected drawing

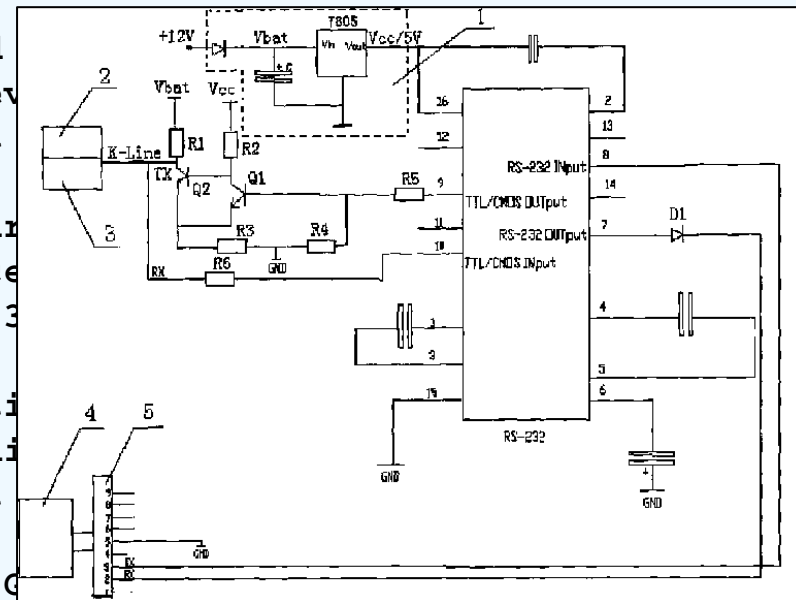
NOVELTY - The device has a car combined module (3) connected with a diagnosis device instrument, by an interface circuit that combined instrument and the body control device is utilized for detection, and part connected with a pin (10) of an interface and a pin (7) of the interface chip RS 232 device via a diode (D1).

USE - Motor communication connection


ADVANTAGE - The device can convenient operation on the car combined instrument

.....

MC EPI: U12-Q; V04-E; V04-F; V04-M30Q; W02-C



DWPI provides English translations for all claims of ⁸ Chinese invention patents and utility models

Member (0001) 

PI CN 201084875 Y 20080709

TIEN A motor communication connec

IN XU J; CAO S; HU D; YAO X; GE

PA (QIRU-N) QIRUI AUTOMOBILE CO

ABEN The utility model claims a m

comprising a power circuit connected with every circuit, a car combined instrument, a body control module, wherein, the car combined instrument and body control module are connected with a diagnosis device by an.....

CLMEN **[CLAIM 1]** A motor communication connection device comprises a power circuit (1) connected with every circuit, a car combined instrument (2), a body control module (3), wherein, the car combined instrument (2) and body control module (3) are connected with a diagnosis device (4) by an interface circuit; the interface circuit is connected with car combined instrument (2) and body control module (3) by k-line; the diagnosis device (4) is used for detection, parameter adjustment, important detection parameter setting of car combined instrument and body control module soft/hard ware.

[CLAIM 2] The motor communication connection device according to claim 1, wherein, the interface circuit, comprises triode (Q1, Q2), an interface chip (RS-232) and a connection socket (5), k-line is connected with pin 10 of interface chip (RS-232) by a resistance (R6), then output by pin 7

[CLAIM 4] The motor communication connection device according to claim 1 or 2, wherein, the diagnosis device (4) is an auto diagnostic instrument.

MEMB includes a human translation of title and abstract, and also a human translation (HT) of all claims available at member level.

Patent Information from Japan



9

- **Highlights on STN**

- Coverage:

- **Patents** covered in CAPLUS since 1916, in DWPI since 1963, and since 1973 in INPADOCDB
- **Utility models**: CAPLUS since 2005, in DWPI since 2008, in INPADOCDB 1965-2001
- **main claim** in English since 2008 (DWPI)
- **Original abstracts** back to 1976 (JAPIO)

- **High timeliness** (CAPLUS):

- bibliography and abstracts available within **2** days
- substance and subject indexing available within 27 days

- **F-Terms** searchable (since 1966 in DWPI!) including **F-Term Thesaurus** (CAPLUS, DWPI)

F-Term Thesaurus supports Japanese classification searching (CAPLUS, DWPI)

E63	0	BT6	FTCLA/FTERM FTERM CLASSIFICATION OF THE
E64	0	BT5	2/FTERM . Residual technology
E65	137898	BT4	2H/FTERM . . Applied Optics
E66	8335	BT3	2H049/FTERM . . . DIFFRACTING GRATINGS; POLARIZING ELEMENTS; HOLOGRAMS USED AS OPTICAL ELEMENTS
E67	0	BT2	2H049/BA00/FTERM Action and principle of polarizing elements
E68	13	BT1	2H049/BA01/FTERM Action
E69	4017	-->	2H049/BA06/FTERM Phase plate
E70	527	NT1	2H049/BA07/FTERM 1/4 wave length plate
E71	92	NT1	2H049/BA08/FTERM Polarimetric element
***** END *****			

F-term hierarchy can easily be displayed and be used for searching

Patent Information from Korea



- **Highlights on STN**

- Bibliographic information and abstracts **within 14 days of publication** (CAPLUS)
- Title, abstract, manual coding and **deep indexing for records with significant chemistry content** (DWPI)
- **All claims** (MT) for Korean unexamined and examined patent applications and Utility Models since mid 2008 (DWPI)
- High quality human translations of TI and AB **since 1979** for A- and B-documents (KOREAPAT)

Patent Information from India



12

- **Highlights on STN**

- Coverage:

- Patents and patent applications (CAPLUS) since 1946
- Indian patent applications (new law!) including value-added data and indexing since 2004 (CAPLUS, DWPI)
- Coverage in INPADOCDB from 1975 – 2004

- **High timeliness**: bibliographic information and abstracts within 14 days of publication (CAPLUS)

- Publication numbers of the different Indian Patent Offices **unambiguous and standardized**

Patent Information from Taiwan, Hongkong, Singapore

13

- Coverage on STN
 - Taiwan
 - **DWPI**: A- and B-documents since 1993, titles and abstracts; utility models from 2008 onwards with English titles
 - **CAPLUS**: Since 2000 (TWB); bibliographic information and abstracts; substance and subject indexing; classification
 - **INPADOCDB**: since 1993 A- and B-documents as well as utility models
 - Hongkong
 - Covered by CAPLUS (since 2000) and INPADOCDB (since 1976)
 - Singapore
 - Covered by CAPLUS, DWPI and INPADOCDB (since 1983)

Summary

- STN offers the **powerful unique combination** of **DWPI** and **CAplus** for prior art searching of Asian publications:
 - Enhanced meaningful title, patent-focussed abstracts, classifications, substance-specific indexing
- Other enhanced patent files, like **JAPIO** and **KOREAPAT**, are **important supplementary** resources for JP or KR
- **INPADOCDB** provides a **broad coverage** of Asian patent publications and unique coverage of utility models

Number of publications or priorities from KR, CN, JP, TW, SG, and IN with English full-text or abstract ¹⁵ (2009/03)

Priority Countries (IPRC) with English full-text or abstract		JP	CN	KR	TW	SG	IN
	PCTFULL	181.754	17.386	31.733	90	1.196	3.890
	EPFULL	330.230	4.646	19.643	135	240	380
	GBFULL	72.666	750	5.820	1.223	223	256
	USPATFULL	1.103.825	18.762	148.396	57.283	1.772	3.565
	CAPLUS *)	2.590.374	389.086	330.872	35.437	999	26.844
	WPINDEX	5.672.955	909.337	745.627	100.270	4.739	25.371

Patent Countries (IPC) with English abstract		JP	CN	KR	TW	SG	IN
	INPAFAMDB	2.028.783	1.273.370	795.644	180.648	40.270	25.150
	CAPLUS *)	3.067.890	647.682	420.879	78.800	9.171	97.666
	WPINDEX	6.871.388	1.526.731	1.181.054	242.939	34.862	119.831

*) chemistry related information



STN[®]

Patent Information from East Asia

www.stn-international.com