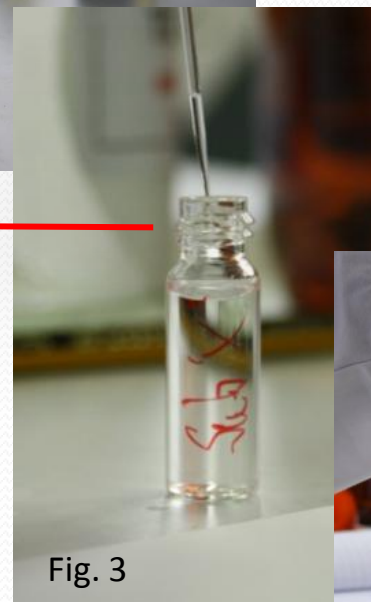
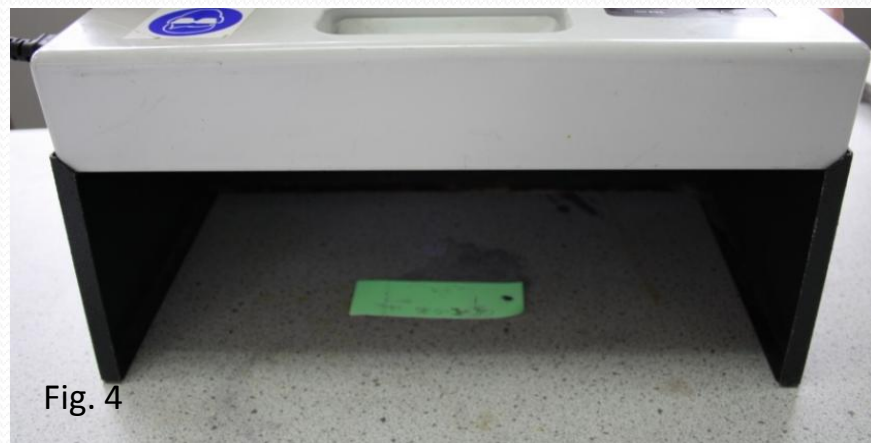
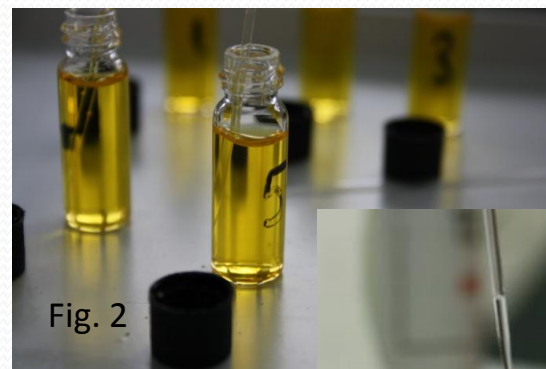
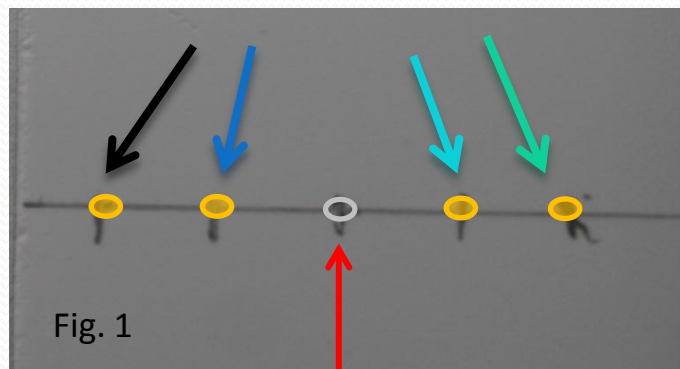


## The Contaminated Samples

1. As a team, prepare a 'large' TLC plate with five marks.
2. 'Spot' your contaminated samples onto the plate (Figs. 1+2).
3. 'Spot' a sample of drug 'X' (caffeine) onto the middle mark (Figs. 1+3).
4. Place into the TLC tank for 8 minutes, when finished place on white filter paper and mark the solution line (Fig. 4).
5. Place the TLC plate under UV light and draw around any visible marks (Fig. 5).
6. You should now be able to compare the labelled samples to sample 'X' and figure out which athlete consumed caffeine...

Contaminated sample from team member 1-4



3. 'Spot' a sample of drug 'X' (caffeine) onto the middle mark (Figs. 1+3).

4. Place into the TLC tank for 8 minutes, when finished place on white filter paper and mark the solution line (Fig. 4).



THE INDEPENDENT

London 2012: Where drug cheats fear to tread

Caffeine use common in athletes...

Olympic athletes at risk from popular supplements

FOOD manufacture

