

Membership and Qualifications Board

Working Groups on:
Regions and Sections
Ethical practices
Professional practice
Diversity

Working Groups on:
CPD
Member services
H&S@RSC events

Accreditation
&
Validation

Admissions

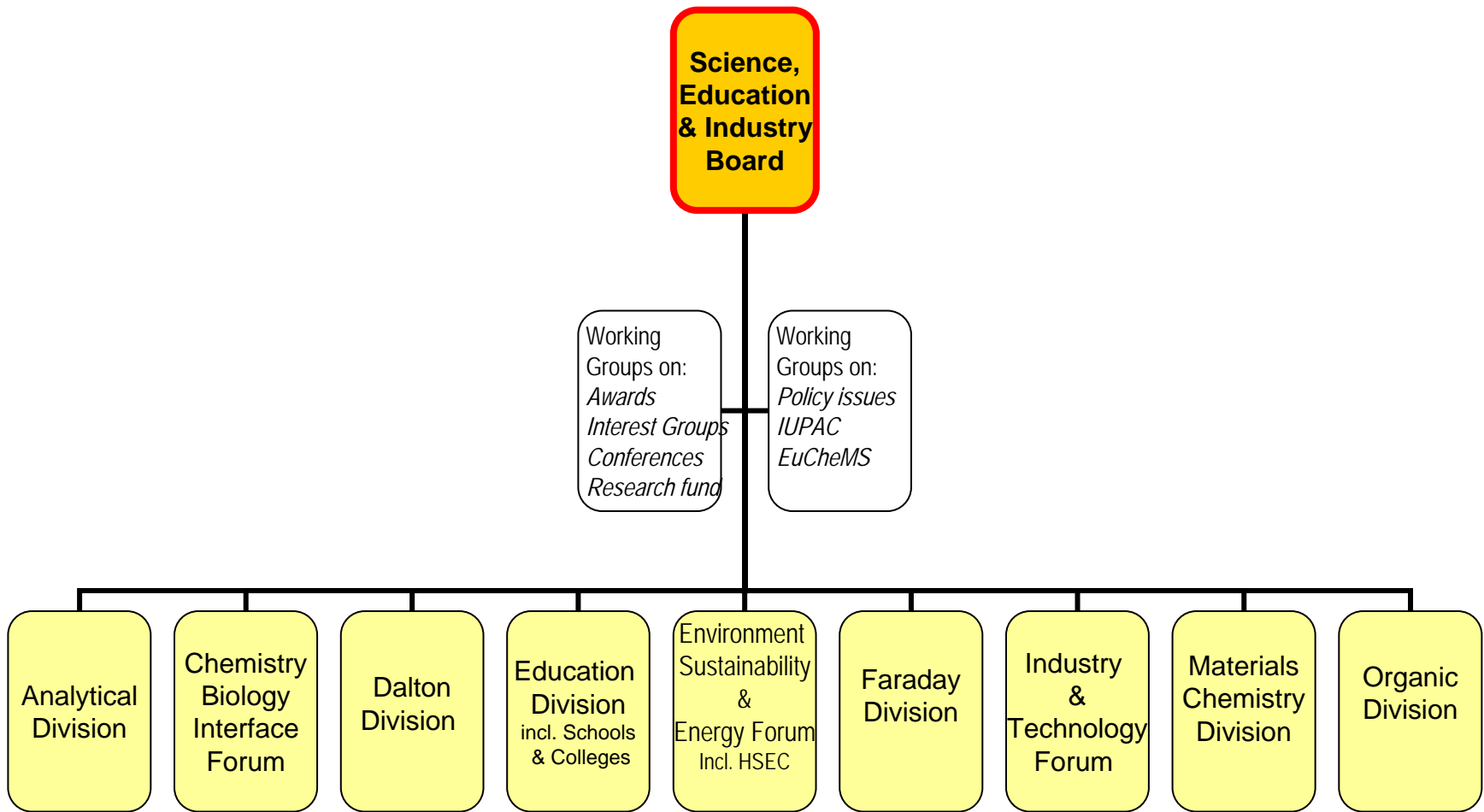
Benevolent
Fund Grants

Member
Networks
incl CLS

Travel
Grants

Notes: CPD = Continuing Professional development; CLS = Committee for Local Sections

The establishment of Working Groups is encouraged; these may be set up by the Board itself.



Notes: Schools and Colleges Committee reports to EDC; Health, Safety and Environment Committee reports to ESEF.

The establishment of Working Groups is encouraged; these may be set up by the Board itself.

```
graph TD; PB[Publishing Board] --- IT[Information Technology]; PB --- SP[Science Publications]; PB --- S[Selling]; PB --- CW[Chemistry World];
```

**Publishing
Board**

Information
Technology

Science
Publications

Selling

Chemistry
World

```
graph TD; A[Finance Board] --- B[Investment Committee]
```

Finance Board

Investment
Committee