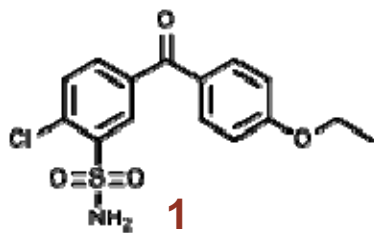


# P08

Rigollier *et al.*

## Arylsulfonamide-based inhibitors of matrix metalloproteinase 13

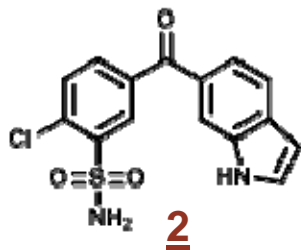
HTS



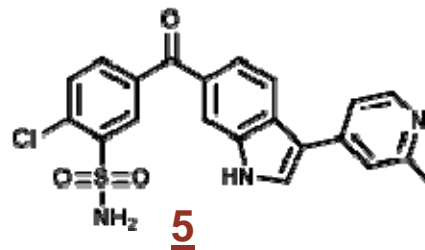
IC<sub>50</sub> 3 uM MMP13



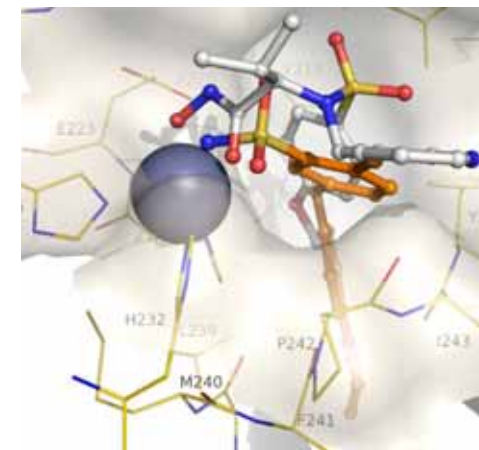
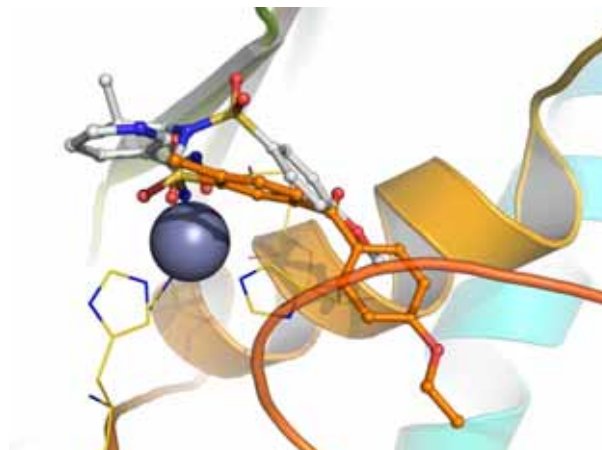
Structure-based optimization



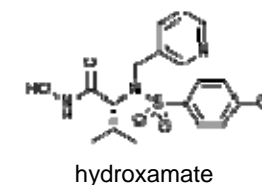
IC<sub>50</sub> 0.2 uM MMP13



IC<sub>50</sub> 0.03 uM MMP13  
selective against other MMPs



overlay of arylsulfonamide **1** (orange)  
in complex with MMP13 with hydroxamate (white)



- Arylsulfonamide scaffold exemplified by **1** illustrates a new principle for MMP inhibition
- It provides a viable starting point for MedChem optimization towards more potent & selective inhibitors

