

Newsletter from STN

November 2008



In this Issue. . .

- Staff News
- Meet STN at the Online Information Exhibition
- Spotlight on IMSPATENTS
- Tips from the Help Desk – Subset searching
- Latest system news – two new SET commands
- STN Database News you may have missed
- Database Authority mailing
- Training Opportunities and Updates
- And finally ...

Staff News

Just to remind you who is currently in the STN team, we have had a group photo taken.

We hope that by the time of the next Newsletter we will have a new Manager to introduce to you. In the meantime, please meet Barry Anderson, who has gallantly stepped into the role. Barry has supported us admirably through difficult times, bringing his vast Marketing and Sales experience with him, from over 30 years service within the RSC.



Back row: Ann Ennis, Barry Anderson, Diane Smith
Front row: Louise Catterick, Jan Davies

Meet STN at the Online Information Exhibition

Dates for your diary must be 2-4 December 2008, when Online Information 2008 takes place in London at Olympia. As is our custom, we will be representing the STN UK Agency by joining colleagues from FIZ Karlsruhe and CAS at the exhibition stand, No 512. We hope to catch up with many of you there over the three day period.

On Tuesday 2nd at 2.30 pm, there will be a presentation at the stand of latest STN news. Do join us there and stay on for the reception afterwards.

Spotlight on IMSPATENTS

IMSPATENTS – IMS LifeCycle Patent Focus on STN - is the main database for pharmaceutical patent information provided by IMS Health, global provider of business intelligence to the pharmaceutical industry.

It covers a broad range of key pharmaceutical patents, which have been selected and evaluated by a team of experienced patent editors based in London.

The editors keep up-to-date with national and international patent laws to aid them in calculating patent expiry dates, including any extensions to the patent term, and also to follow the status of a patent from filing through to grant and any legal actions.

Regular monitoring of the FDA's Orange book, the Canadian patent register, national and regional patent databases, websites and journals enables the editorial team to identify the most relevant and commercially significant patents for detailed evaluation. Full details of patent extensions in the USA, Australia and Japan are included, as are supplementary protection certificates in Europe. Everything is directly linked, by highly skilled in-house chemists and biochemists, with the drug or drugs claimed, saving you time and effort.

Unique access to IMS' sales data enables prioritization of the top-selling drugs, and these are continuously updated as new information is collected.

Fields include priority details, specification numbers, filing dates, published application and published patent dates, expiry dates, SPC expiries as well as comment fields where further explanation and detail is given. Key chemical items are also available including generic and trade names, structures and CAS numbers.

Using IMS LifeCycle R & D Focus - available on STN as the file **IMSRESEARCH** – as well as **IMSPATENTS** and **IMSPRODUCT**, gives you access to three of the world's most powerful pharmaceutical databases to drive more informed decision-making at three critical and defining stages of the drug's lifecycle; R&D, launch activity and patent expiry.

IMS Health also provide resources for investigating pharmaceutical company information and a directory of world-wide medical and pharmaceutical meetings and conferences. You can check file content easily by reviewing any of the IMS files on STN from:
http://www.stn-international.de/stndatabases/databases/onlin_db.html#/

We hope you will consider taking advantage of these most valuable sources, and so we will be very happy to help with search strategies if you need assistance. If you have any questions or comments for the database provider we can pass them on.

Tips from the Help Desk – Subset searching

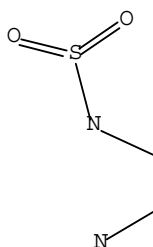
Have you ever had a structure search that required a broad query or perhaps didn't run within system limits? To get around this there is always the option to run a subset search.

There are several ways to use SUBSET searching – you can start with a really broad structure query, then refine with a second query which is a little more specific. You could create a dictionary set in the Registry file which in a broad way defines something about the structure you are interested in, or you could create a text search in CAPlus for a particular research area and transfer those documents into MARPAT, then run your desired structure query against that answer set.

To use SUBSET searching first create the broad query, which can be structure based, then run your modified structure query against this answer set. For example:

```
=>FILE REG
L1      STRUCTURE UPLOADED      <-Broad query

=> D L1
L1 HAS NO ANSWERS
L1      STR
```



=> S L1
SAMPLE SEARCH INITIATED 11:54:45 FILE 'REGISTRY'
SAMPLE SCREEN SEARCH COMPLETED - 29114 TO ITERATE

6.9% PROCESSED 2000 ITERATIONS 50 ANSWERS
INCOMPLETE SEARCH (SYSTEM LIMIT EXCEEDED)
SEARCH TIME: 00.00.01

FULL FILE PROJECTIONS: ONLINE **COMPLETE**
BATCH **COMPLETE**
PROJECTED ITERATIONS: 572072 TO 592488
PROJECTED ANSWERS: 516673 TO 536089

L2 50 SEA SSS SAM L1

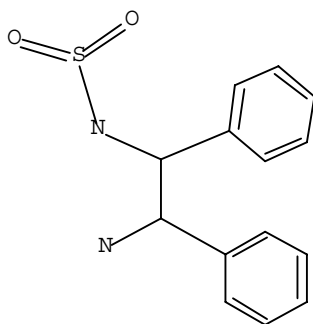
=> S L1 FULL <-Run full file substructure search
THE ESTIMATED SEARCH COST FOR FILE 'REGISTRY' IS 147,90 EUROS
DO YOU WANT TO CONTINUE WITH THIS REQUEST? (Y)/N or END:Y
FULL SEARCH INITIATED 11:55:09 FILE 'REGISTRY'
FULL SCREEN SEARCH COMPLETED - 584835 TO ITERATE

100.0% PROCESSED 584835 ITERATIONS 527259
ANSWERS
SEARCH TIME: 00.00.03

L3 527259 SEA SSS FUL L1 <-Lots of answers! Consider SAVEing
this answer set for future review

L4 STRUCTURE UPLOADED

=> D L4
L4 HAS NO ANSWERS
L4 STR



=> S L4 SUB=L3 FULL <-Run SUBSET search of original answer
at reduced cost

THE ESTIMATED SEARCH COST FOR FILE 'REGISTRY' IS 35,00 EUROS
DO YOU WANT TO CONTINUE WITH THIS REQUEST? (Y)/N or END:Y
FULL SUBSET SEARCH INITIATED 11:58:15 FILE 'REGISTRY'
FULL SUBSET SCREEN SEARCH COMPLETED - 527259 TO ITERATE

100.0% PROCESSED 527259 ITERATIONS 1095 ANSWERS
SEARCH TIME: 00.00.03

L5 1095 SEA SUB=L3 SSS FUL L4 <-Review these answers with D
SCAN.

=>FILE CAPLUS
=> S L5 AND PATENT/DT
545 L5

6432065 PATENT/DT
L6 144 L5 AND PATENT/DT

=> D BIB HITSTR

In the most recent patent document retrieved there are over 60 'HIT' structures, but to look at them all this display format only costs EUR 3.12 – very economical.

This should give you an idea of how to make Subset Searching work to your advantage with

- Reduced costs
- Time efficiency
- Focussed results

Latest system news – two new SET commands

Two new SET commands increase convenience of STN[®] searching

SET SPELLINGS

Have you ever wondered whether including spelling variations of certain terms (such as *sulfur* or *sulphur* and *aluminum* or *aluminium*) in your search query would improve the retrieval of your answer sets? Now you can be assured of maximum retrieval by employing the new SET SPELLINGS command.

With SET SPELLINGS ON, your search terms, including those with left and/or right truncation, will be automatically supplemented with spelling variants. In addition, when there is a common alternate term for your search term, that alternate term will be automatically added to your search strategy. Terms in this latter category typically are alternative words for the same object in North America and in English-speaking European countries. When SET SPELLINGS is used, separate postings for each version of the search term are provided, as well as a combined total for the postings.

In databases with search term charges, no additional search term costs are incurred due to use of SET SPELLINGS.

Examples:

```
=> S SULFUR
      394924 SULFUR
      9383 SULPHUR
L1    400185 SULFUR
      (SULFUR OR SULPHUR)

=> S ?ANESTHETIS?
      386 ?ANESTHETIS?
      62986 ?ANESTHETIZ?
      130 ?ANAESTHETIS?
      516 ?ANAESTHETIZ?
L2    63592 ?ANESTHETIS?
      (?ANESTHETIS? OR ?ANESTHETIZ? OR
      ?ANAESTHETIS? OR ?ANAESTHETIZ?)

=> S WINDSCREEN?
      261 WINDSCREEN?
      2619 WINDSHIELD?
L3    2830 WINDSCREEN?
      (WINDSCREEN? OR WINDSHIELD?)
```

SET LHISTORY

If you have ever wanted to see a complete review of your search session right before you exit STN, you will find the new SET LHISTORY command helpful. Just enter SET LHISTORY ON and STN will automatically provide you with a complete session history at logoff (LOG Y and LOG H), including the STN databases searched complete with time and date stamps. The search history provided by SET LHISTORY ON is equivalent to that provided by DISPLAY HISTORY within STN.

Example:

```
=> LOG Y

(FILE 'HOME' ENTERED AT 16:00:52 ON 11 NOV 2008)

FILE 'CAPLUS' ENTERED AT 16:00:58 ON 11 NOV 2008
      SET LHI ON
      S 108-78-1/REG# OR MELAMINE

FILE 'REGISTRY' ENTERED AT 16:01:29 ON 11 NOV 2008
L1      1 SEA 108-78-1/RN

FILE 'CAPLUS' ENTERED AT 16:01:29 ON 11 NOV 2008
L2      11422 SEA L1
L3      46295 SEA L2 OR MELAMINE
L4      584123 SEA TOXIC?
L5      387628 SEA KIDNEY? OR RENAL?
L6      20 SEA L3 AND L4 AND L5
      D L6 1-20 bib, abs
```

These two new SET commands are turned off by default. To make maximum use of them, you might want to set them on permanently by typing SET SPELLINGS ON PERM or SET LHISTORY ON PERM. To speed up your search process, you can use command abbreviations—SPE for SPELLINGS and LHI for LHISTORY.

For more information about the SET SPELLINGS or the SET LHISTORY commands, enter HELP SET SPELLINGS or HELP SET LHISTORY at the arrow prompt in STN.

STN Database News You May Have Missed.....

CAS expands definition of basic patents to ensure comprehensive access to substance and sequence information

Since July 1, 2008, both the Patent Cooperation Treaty (PCT) application and its original national equivalent(s) with oldest priority, from the U.S., Germany, Great Britain, France, Canada, and/or the EPO, are being covered as basic patents in CA/Caplus.

If the first national application with oldest priority was filed in a country other than those listed above, then CAS' traditional rule, that the basic is the first patent to arrive at CAS, will apply.

Extensive subject and substance indexing is added to chemistry-related basic patent records in CA/Caplus. With the new expanded definition of a basic patent, the number of patents eligible for basic patent analysis will increase, enhancing overall coverage of chemical substance information in CAS databases, including CAS REGISTRYSM. Approximately 7,500 additional chemistry-related patent records will be added to CA/Caplus in 2008.

Update on CAS coverage of prophetic substances

CAS currently covers exemplified prophetic substances and uses from all new English-, French-, German-, and Japanese-language basic patents.

Coverage is being extended to include exemplified prophetic substances identified in English-, French-, and German-language basic patents from 2004-2007. Coverage of the 2004-2007 backfile is expected to be complete by the end of 2008.

For the most current information about coverage of prophetics, visit:

[CAS Coverage of Prophetic Substances](#).

CHEMLIST[®] enhanced with intermediate list of pre-registered REACH substances

On October 7, 2008, the European Chemicals Agency (ECHA) published an intermediate list of approximately 40,000 substances pre-registered for REACH between June 1 and October 1, 2008 (echa.europa.eu).

This intermediate REACH pre-registration list has been added to CHEMLIST. Now you can determine if a substance has been pre-registered for REACH, as well as access the regulatory history for the substance.

Database Authority Mailing

If you are reading this Newsletter after receiving it by email, then you will have also received a message from us asking you to check the details we hold for your personal record. If you have not yet sent us your response, please would you do so at your earliest opportunity.

It is a legal requirement that we obtain your permission to hold personal details, and we also want to give you the best possible service by being accurate. We don't want to pester you with unwanted messages, but we will have to be in touch again if you have not yet replied. Thanks for your co-operation!

Training Opportunities and Updates

Hands-on Workshops

The STN Agency offers all public training courses **free of charge**, but we do reserve the right to cancel courses if there is insufficient interest. We will give you notice of any cancellation at least a week in advance, and ask that you let us know if you have to cancel after registering.

December

11th Introduction to Chemistry Searching Cambridge

January 2009

14th Introduction to STN Commands Cambridge

15th Patent searching on STN – techniques for using
CAPlus, WPI and Inpadoc Cambridge

February

10th Introduction to Chemistry searching – using the CAS
files effectively Cambridge

11th Structure searching Cambridge

March

17th STN refresher – revisit multifile searching and other
STN commands Cambridge

Registration Form:

All full-day sessions will run 10.00am to 3.30pm

e-Seminars

Live, interactive, web-based seminars bringing professional training to your desktop, each one hour long.

See <http://casevents.webex.com/casevents/mywebex/> for registration details for the following seminars from CAS:

11th December at 2.00 pm STN: Polymers in scientific literature
8th January at 2.00 pm STN: Dealing with large answer sets

See http://www.stn-international.de/training_center/seminars.html for registration details for the following seminars from FIZ:

9th December at 2.00 pm The Art of ECLA

And Finally ...

Please contact us if you have any comments or questions arising from this newsletter:

Jan Davies, Ann Ennis, Diane Smith and Louise Catterick

STN Agency UK & Eire	Tel:	+44 (0) 1223 432 110
Royal Society of Chemistry	Fax:	+44 (0) 1223 426 017
Thomas Graham House	Email:	stnhlpuk@rsc.org
Science Park, Milton Road	Visit STN Agency at:	www.rsc.org/stn
Cambridge	Visit STN at:	www.stn-international.de
CB4 0WF		

You are receiving this email newsletter about STN from the STN Agency UK/Ireland because you have agreed to be updated about STN databases and services. If you do not wish to receive this Newsletter in the future please email STNHLPUK@rsc.org