

Room-temperature Discotic Liquid Crystals Based On Oligothiophenes – Attached and Fused Triazatruxenes

Jing Luo, Baomin Zhao, Jinjun Shao, Kheng Aik Lim, Hardy Sze On Chan, Chunyan Chi*

Department of Chemistry, National University of Singapore, 3 Science Drive 3, Singapore

Corresponding author: chmcc@nus.edu.sg

Table of Contents	Page
¹ H NMR, ¹³ C NMR and MALDI-TOF mass spectra of TAT-T1	2-5
¹ H NMR, ¹³ C NMR and MALDI-TOF mass spectra of TAT-T2	6-9
¹ H NMR, ¹³ C NMR and MALDI-TOF mass spectra of TAT-T1-C	10-13
POM images of TAT-T2 at different temperatures	14

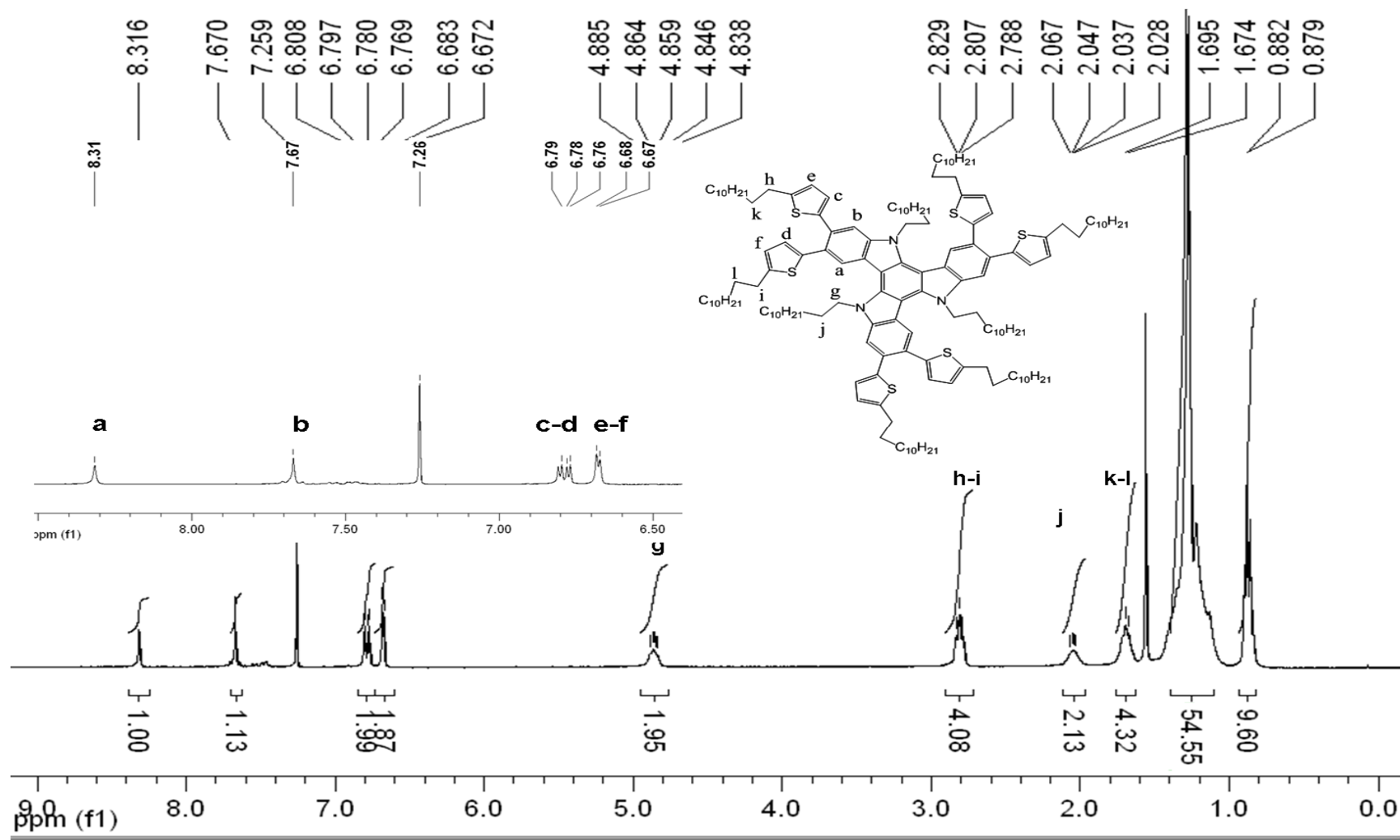


Figure 1. ^1H NMR spectrum of TAT-T1 (in CDCl_3).

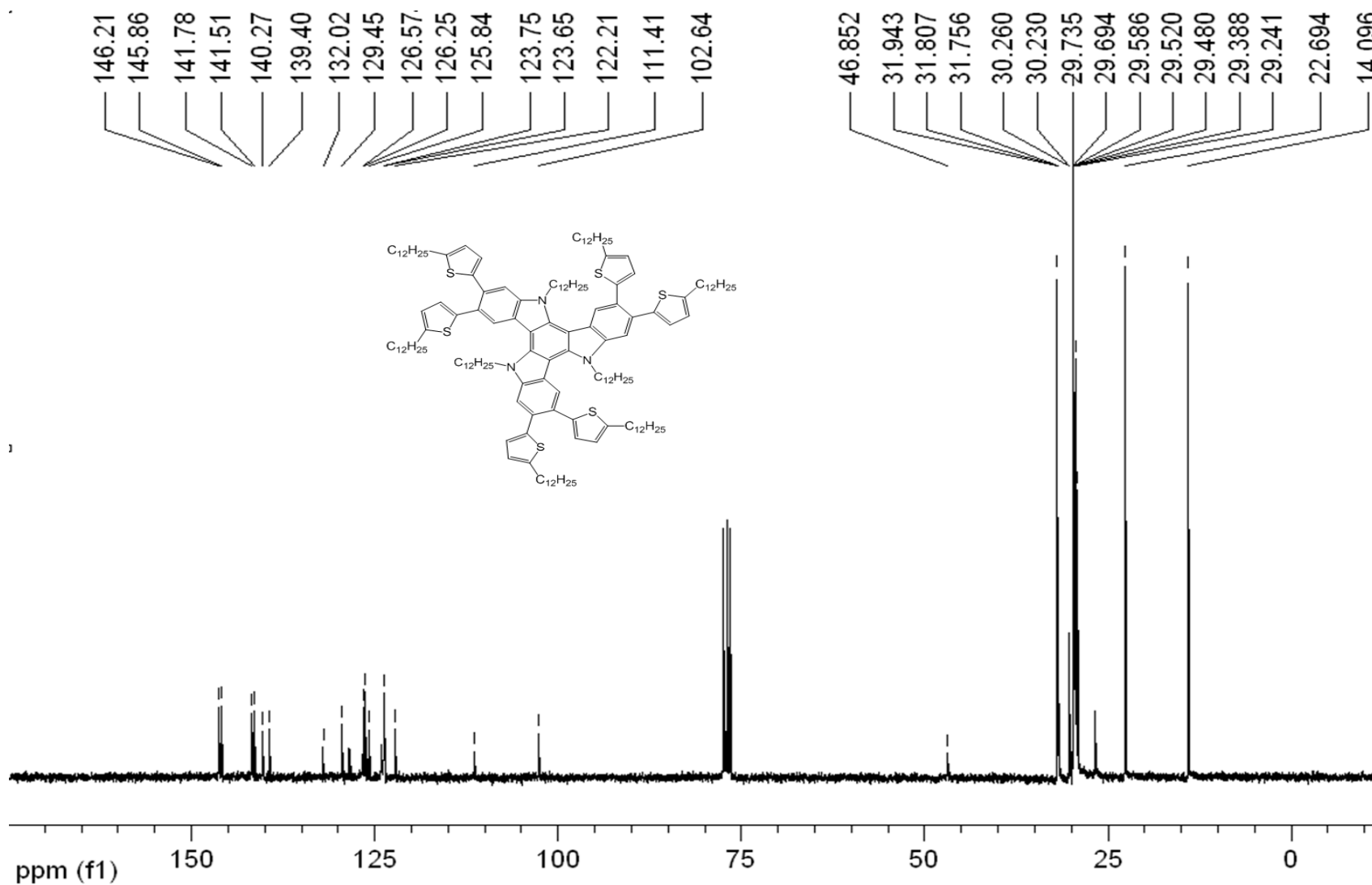


Figure 2a. ^{13}C NMR spectrum of TAT-T1 (in CDCl_3).

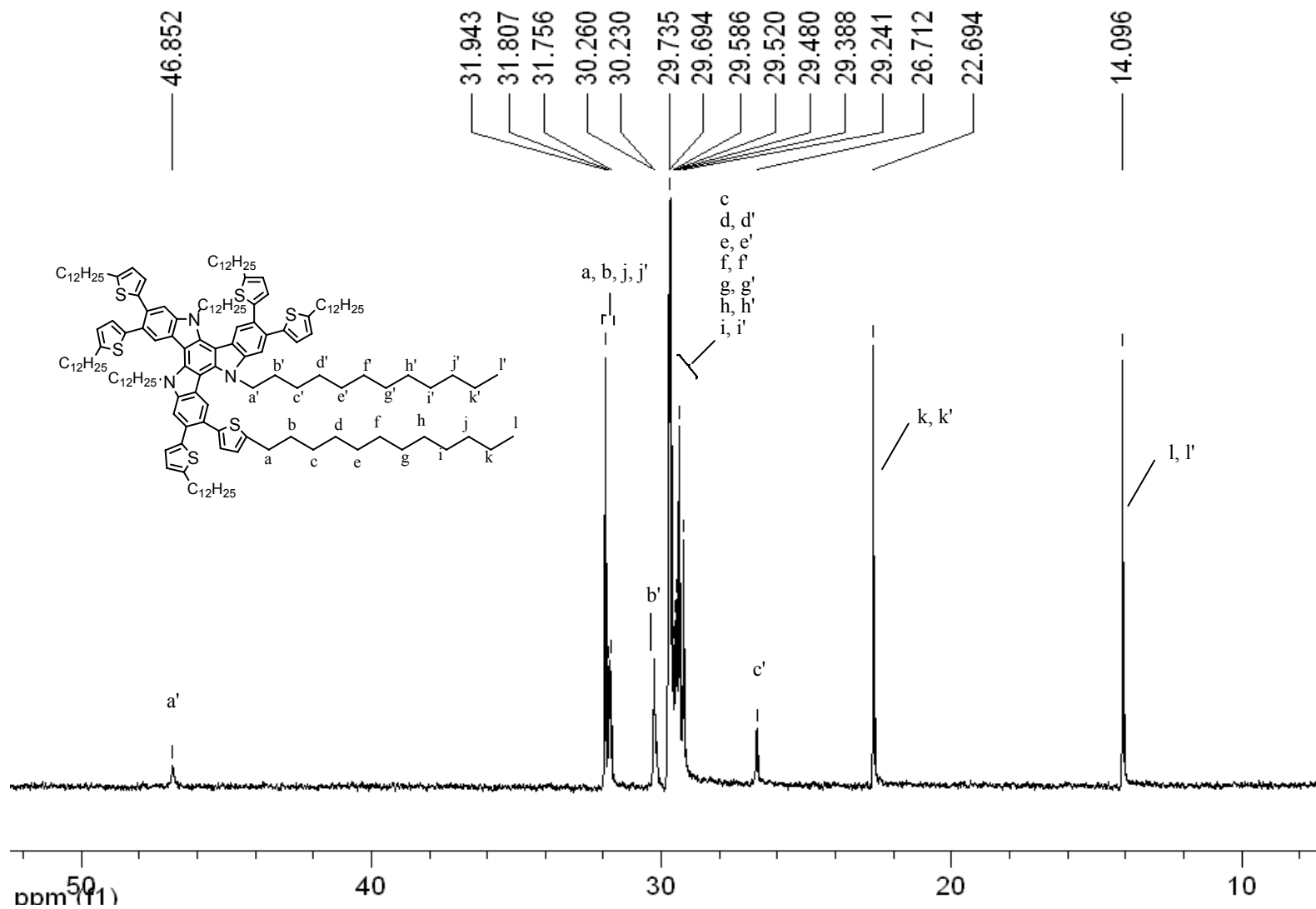


Figure 2b. Magnified area 10 - 50 ppm of ^{13}C NMR spectrum of TAT-T1 (in CDCl_3).

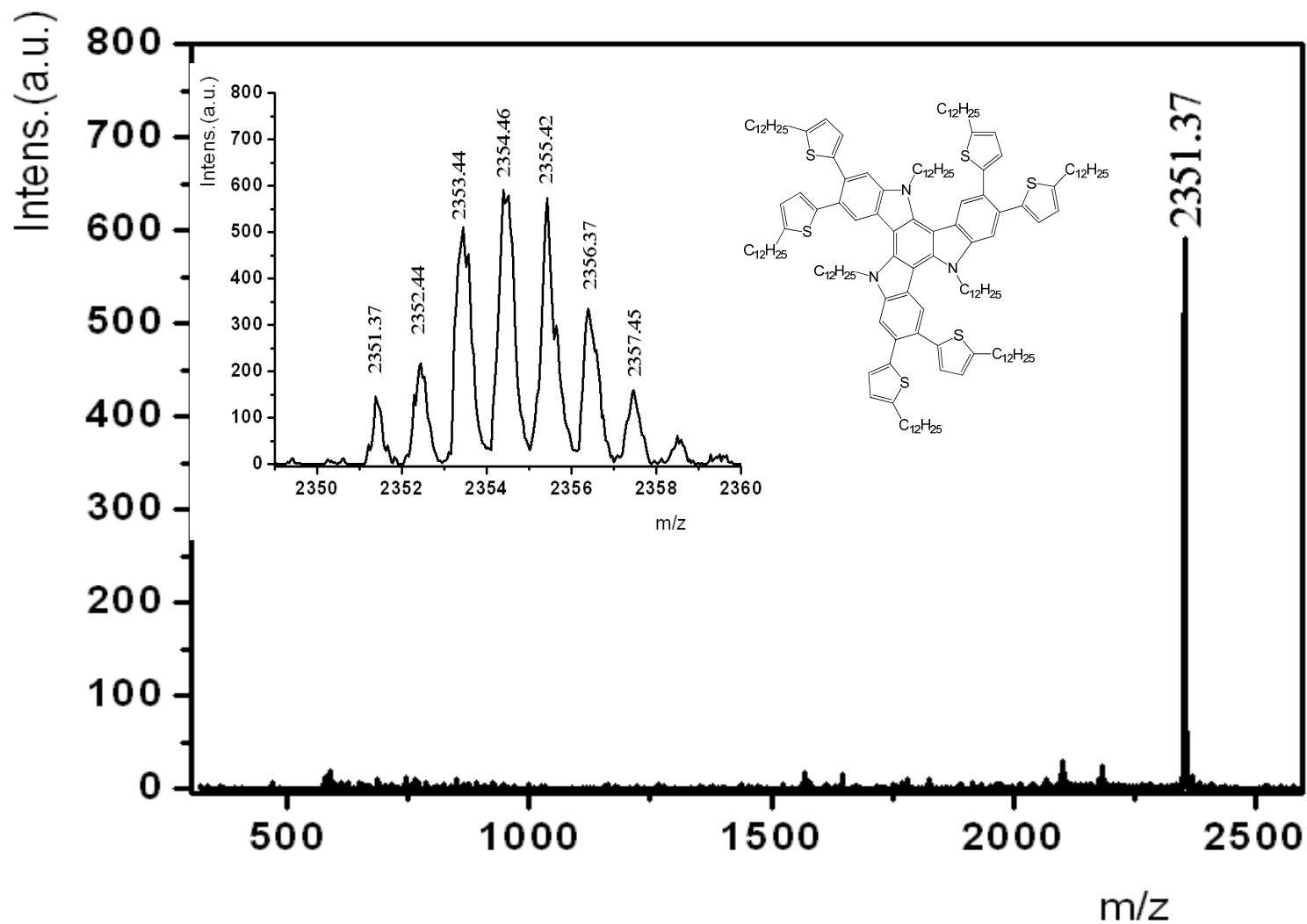


Figure 3. MALDI-TOF mass spectrum of TAT-T1.

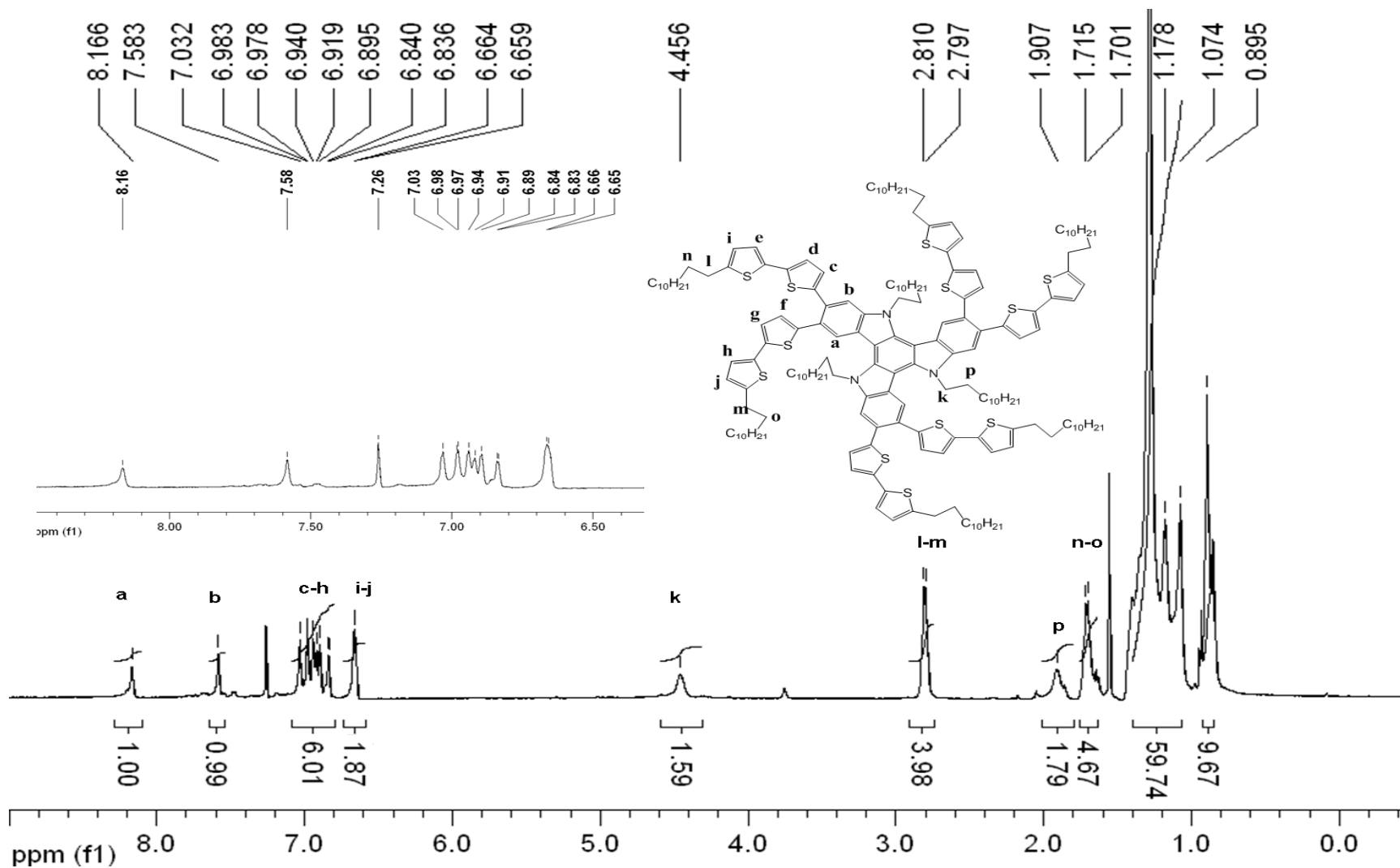


Figure 4. ^1H NMR spectrum of TAT-T2 (in CDCl_3).

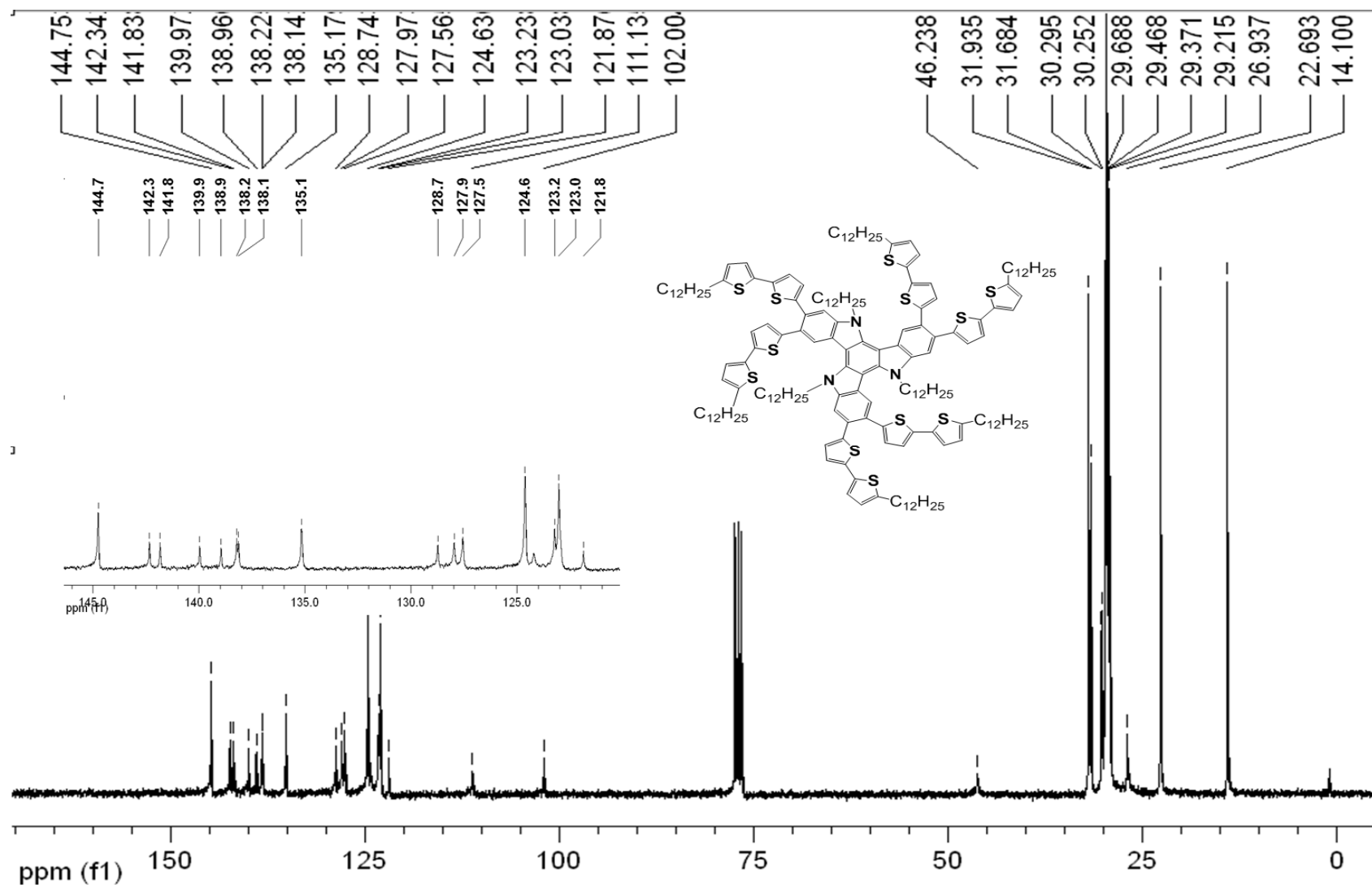


Figure 5a. ^{13}C NMR spectrum of TAT-T2 (in CDCl_3).

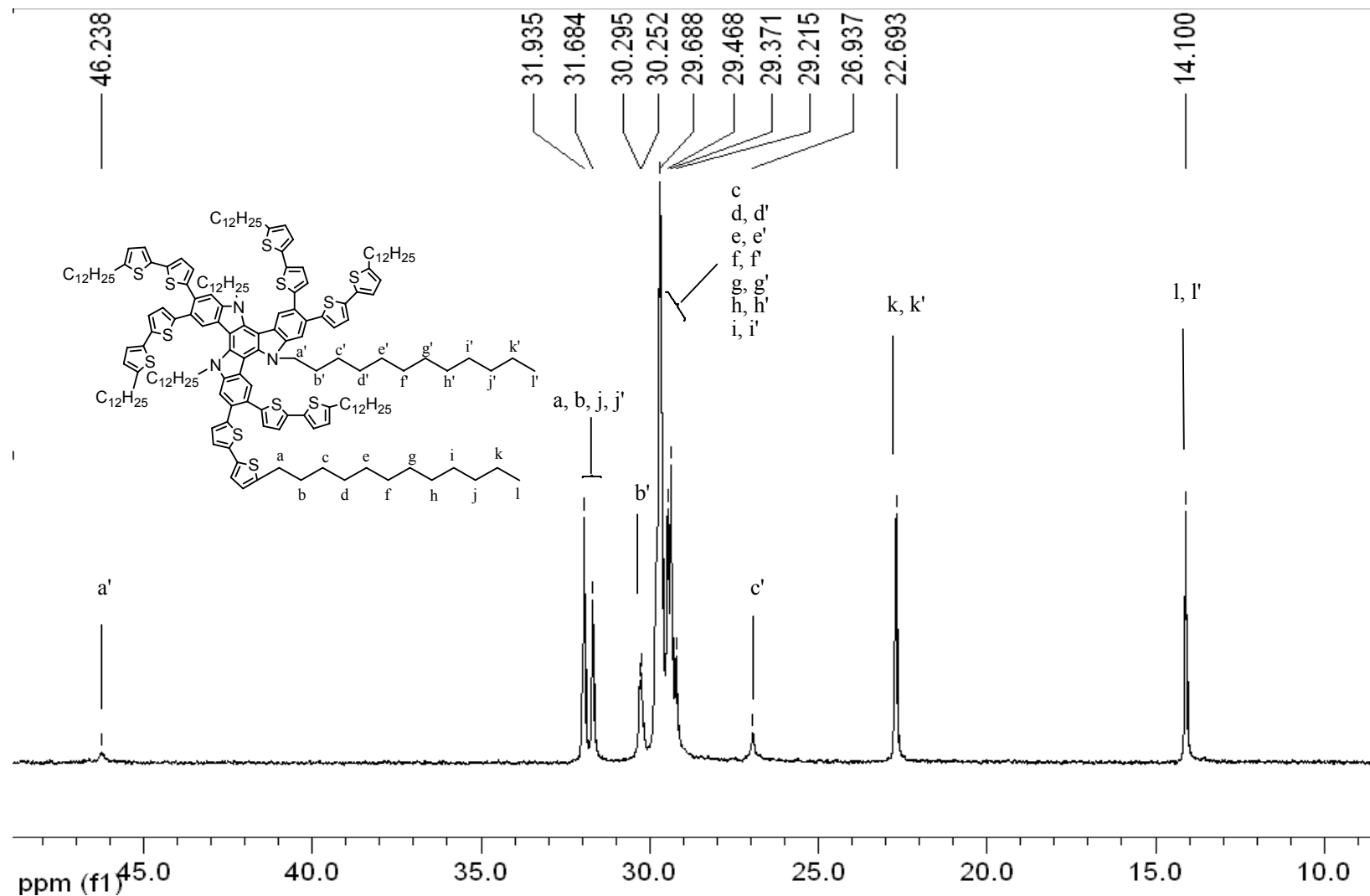


Figure 5b. Magnified area 10 - 48 ppm of ^{13}C NMR spectrum of TAT-T2 (in CDCl_3).

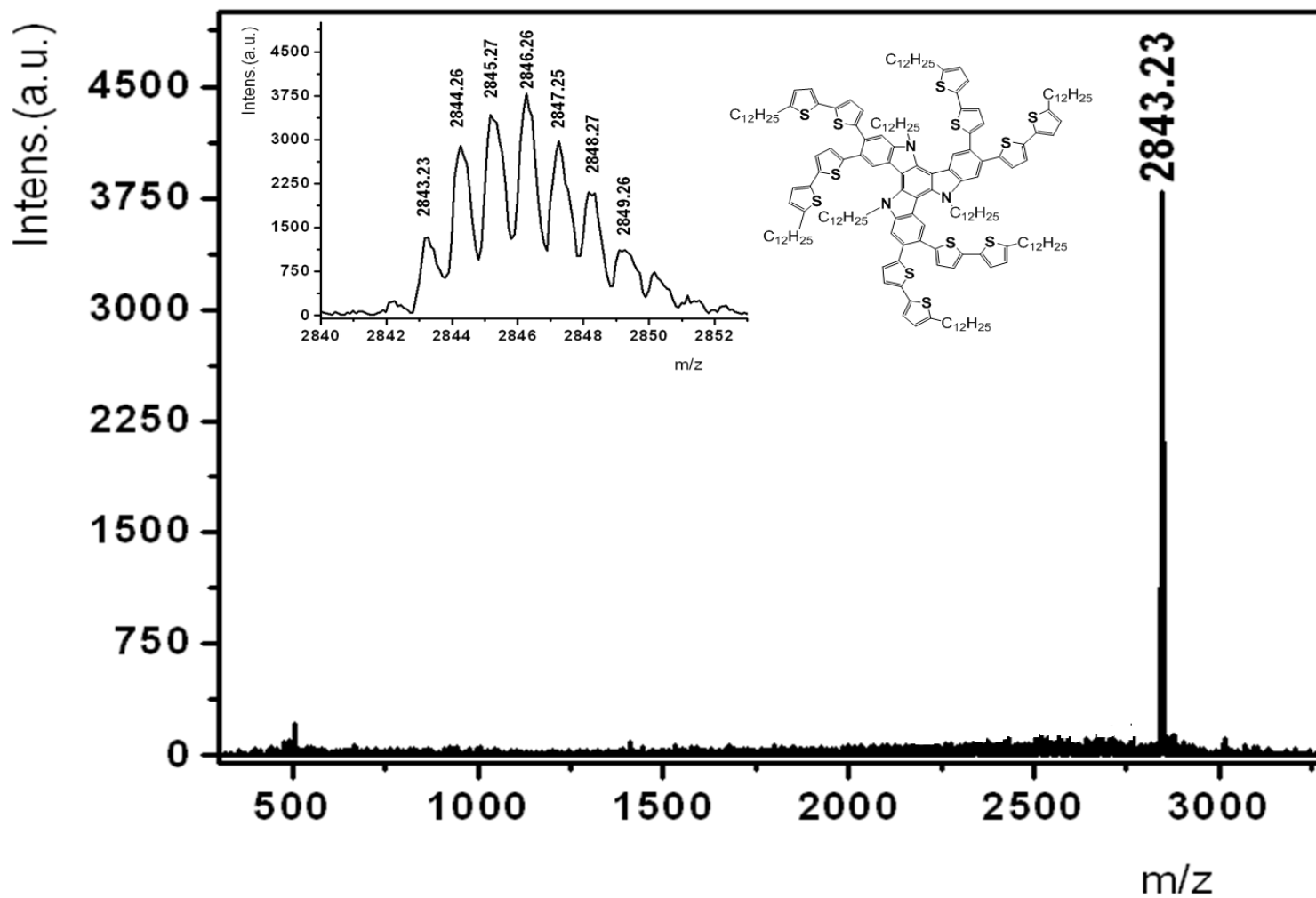


Figure 6. MALDI-TOF mass spectrum of TAT-T2.

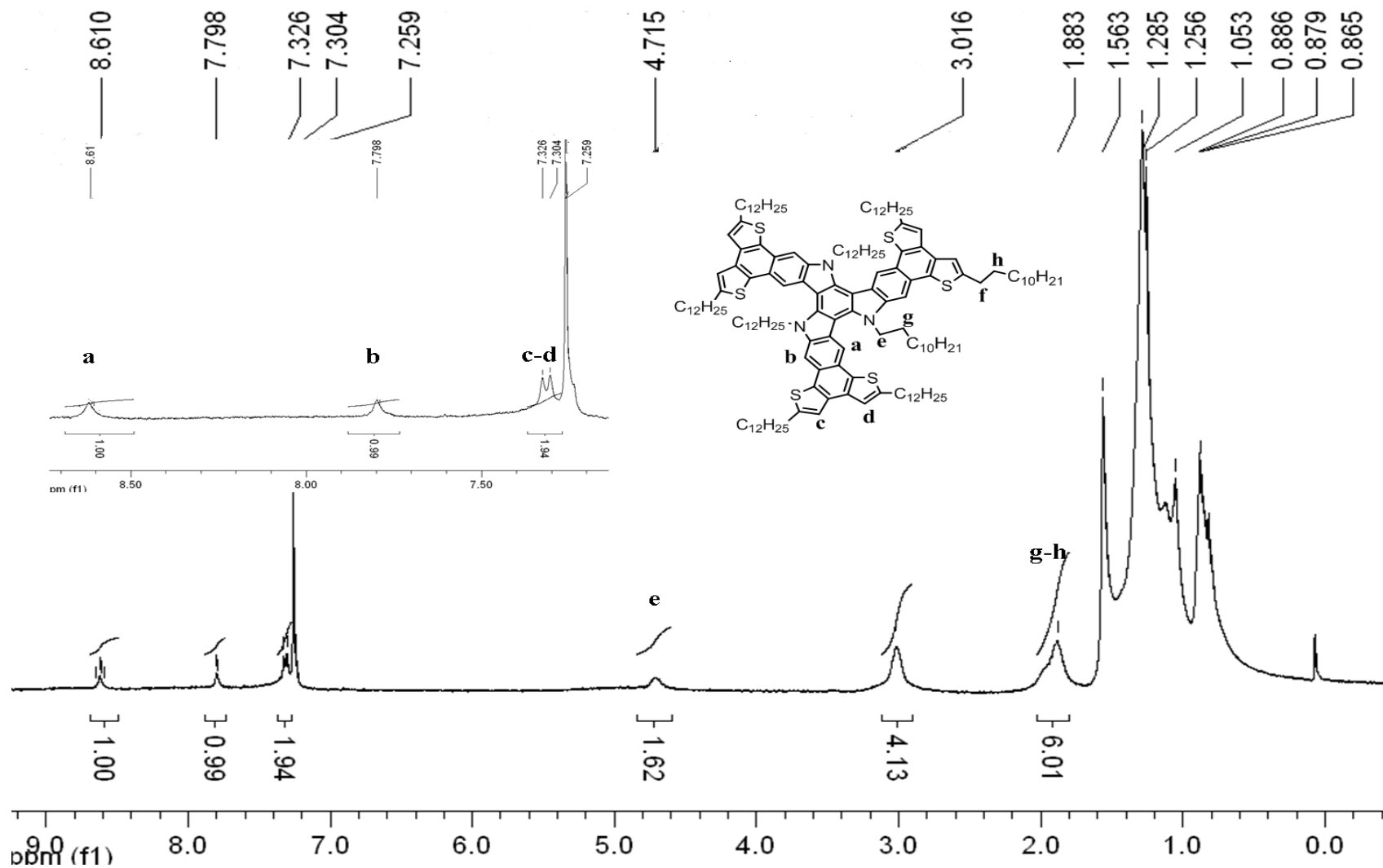


Figure 7. ^1H NMR spectrum of TAT-T1-C (in CDCl_3).

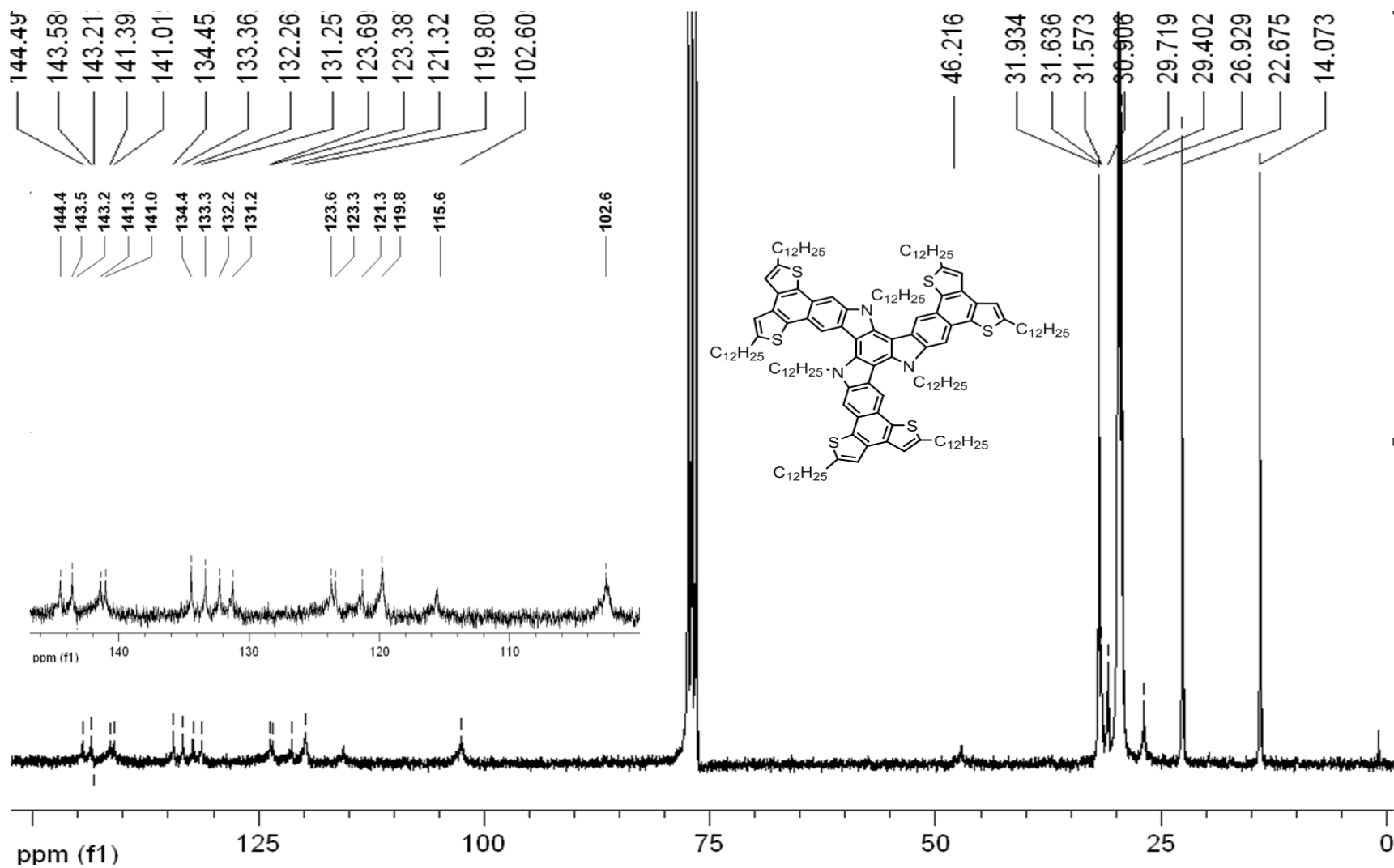


Figure 8a. ^{13}C NMR spectrum of TAT-T1-C (in CDCl_3).

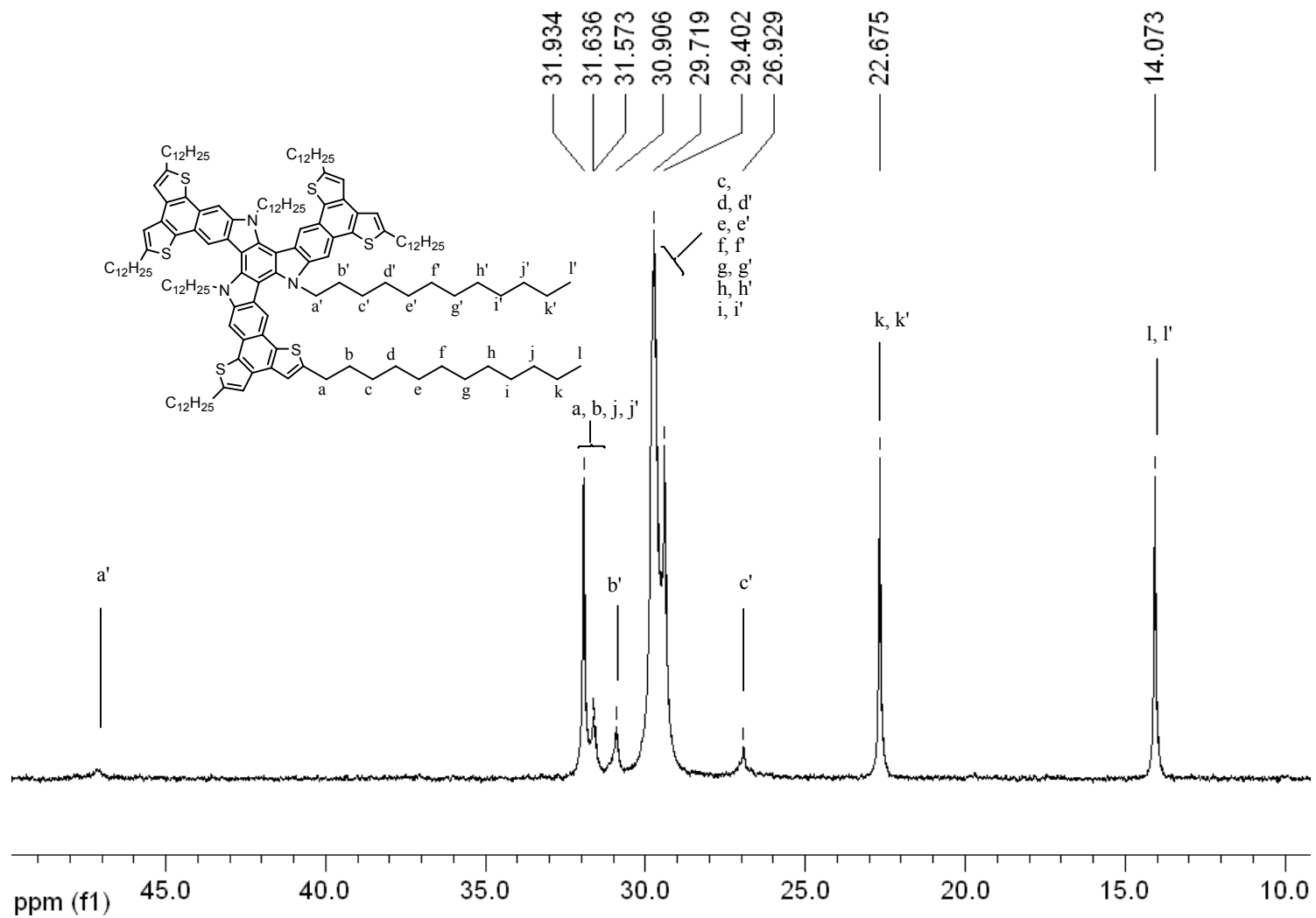


Figure 8b. Magnified area 10 - 50 ppm of ^{13}C NMR spectrum of TAT-T1-C (in CDCl_3).

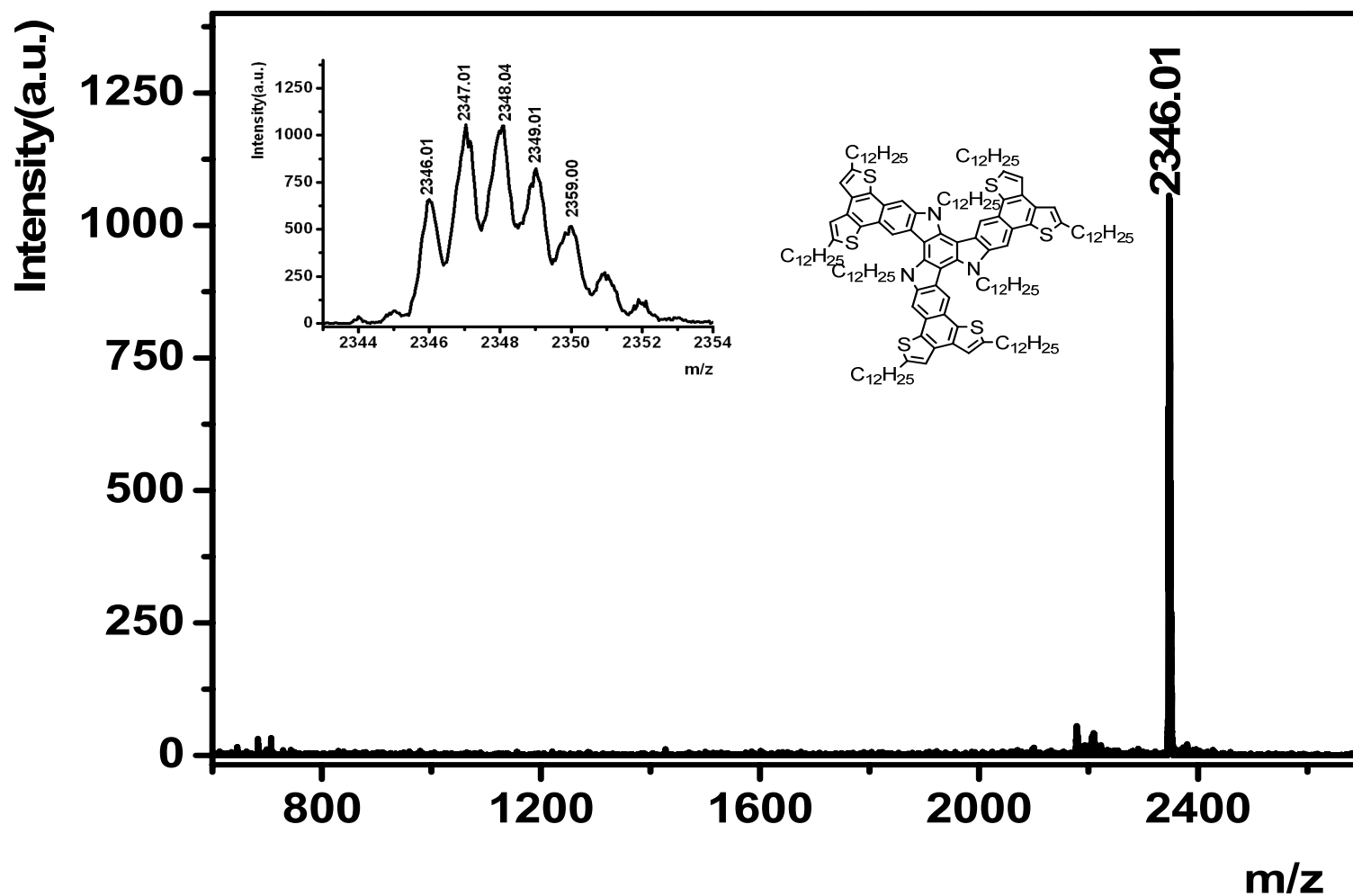


Figure 9. MALDI-TOF mass spectrum of TAT-T1-C.

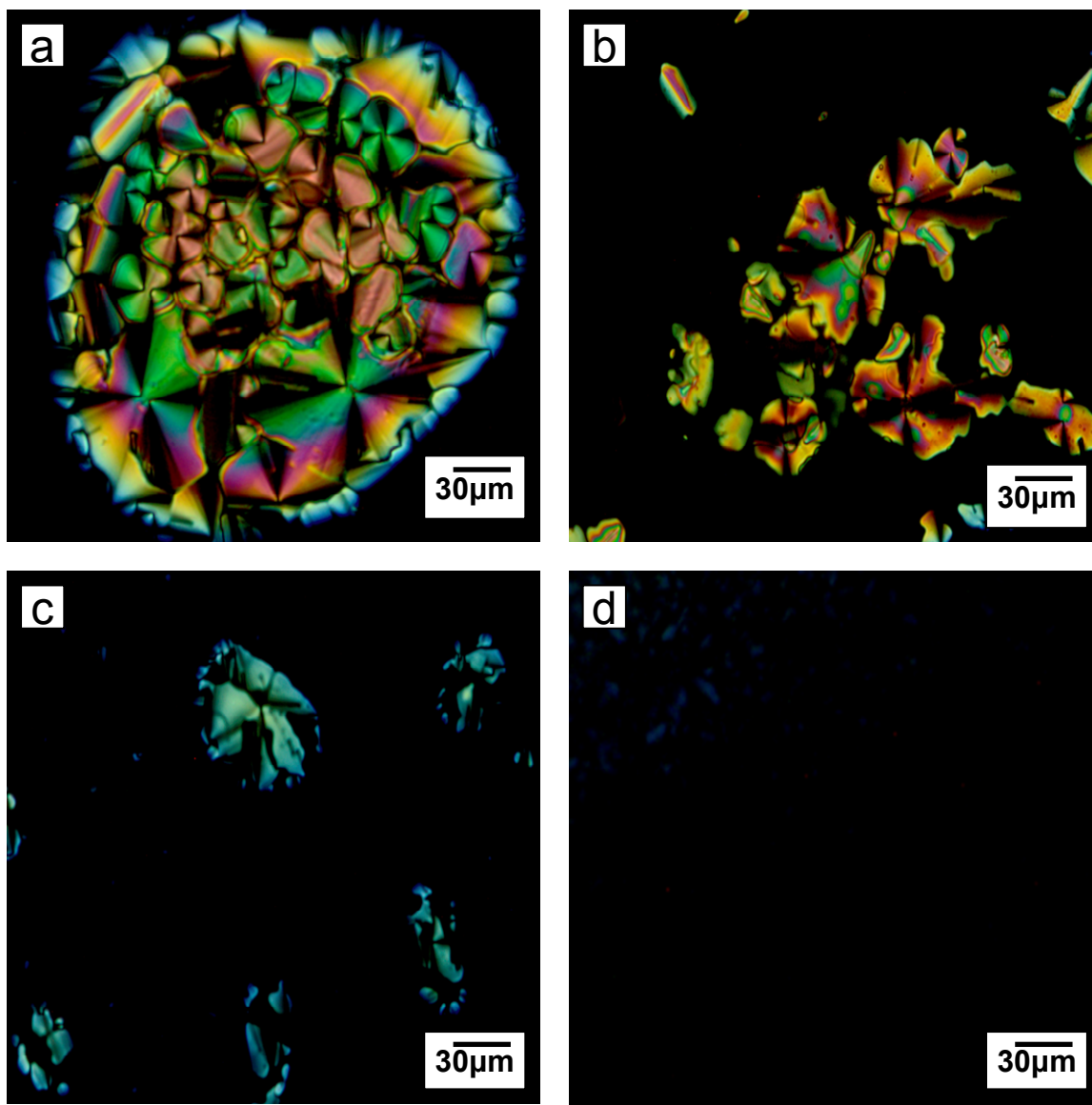


Figure 10. POM images of TAT-T2 at 100 °C (a), 155 °C (b), 167 °C (c), 170 °C (d).