

Supporting information for

Combining atomic force - fluorescence microscopy with a stretching device for analyzing mechanotransduction processes in living cells

E. Hecht,^a P. Knittel,^a E. Felder,^b P. Dietl,^b B. Mizaikoff,^a C. Kranz^{*a}

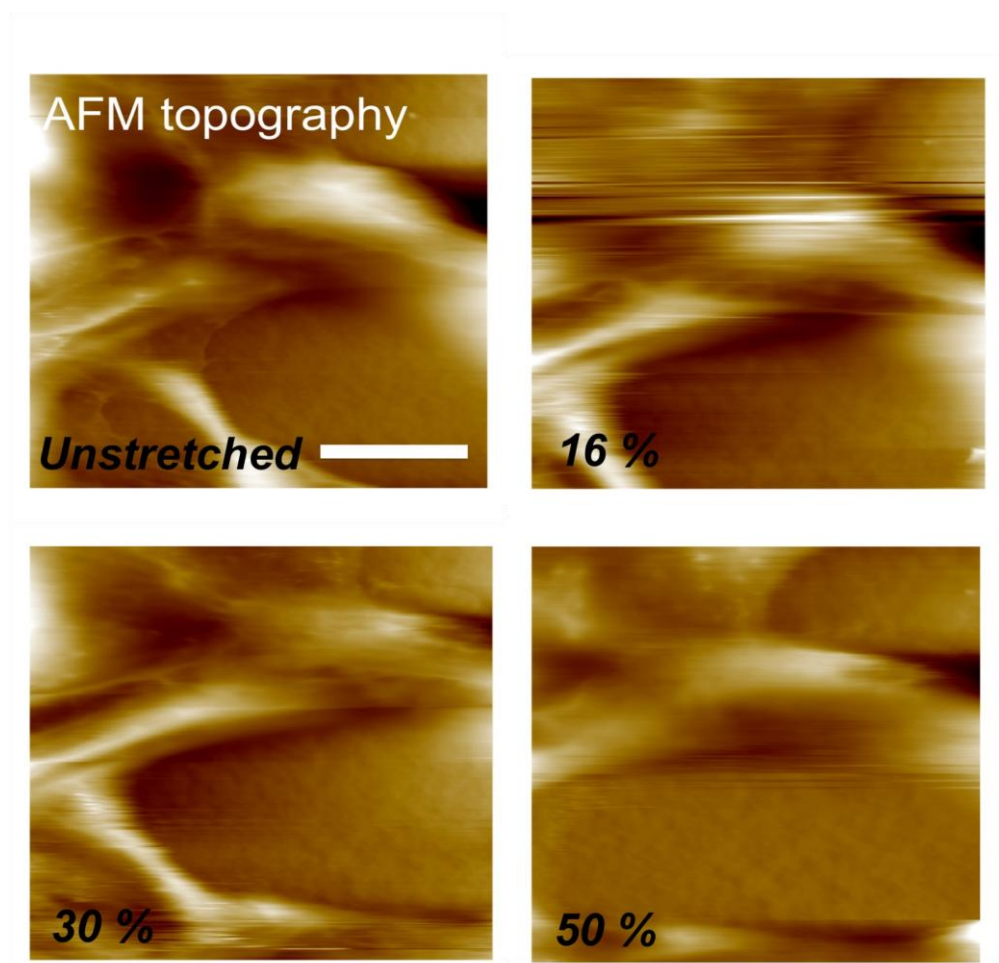


Fig. S1: AFM low force topography images of SCC-25 cells before and after defined stretching levels. Scale bar: 20 μm . Z-range: 0-3 μm .