

Electronic Supplementary Information

Comparative LC-MS/MS analysis of Optimal Cutting Temperature (OCT) compound removal for the study of mammalian proteomes

Leigh A. Weston and Amanda B. Hummon*

Department of Chemistry and Biochemistry

University of Notre Dame

251 Nieuwland Science Hall

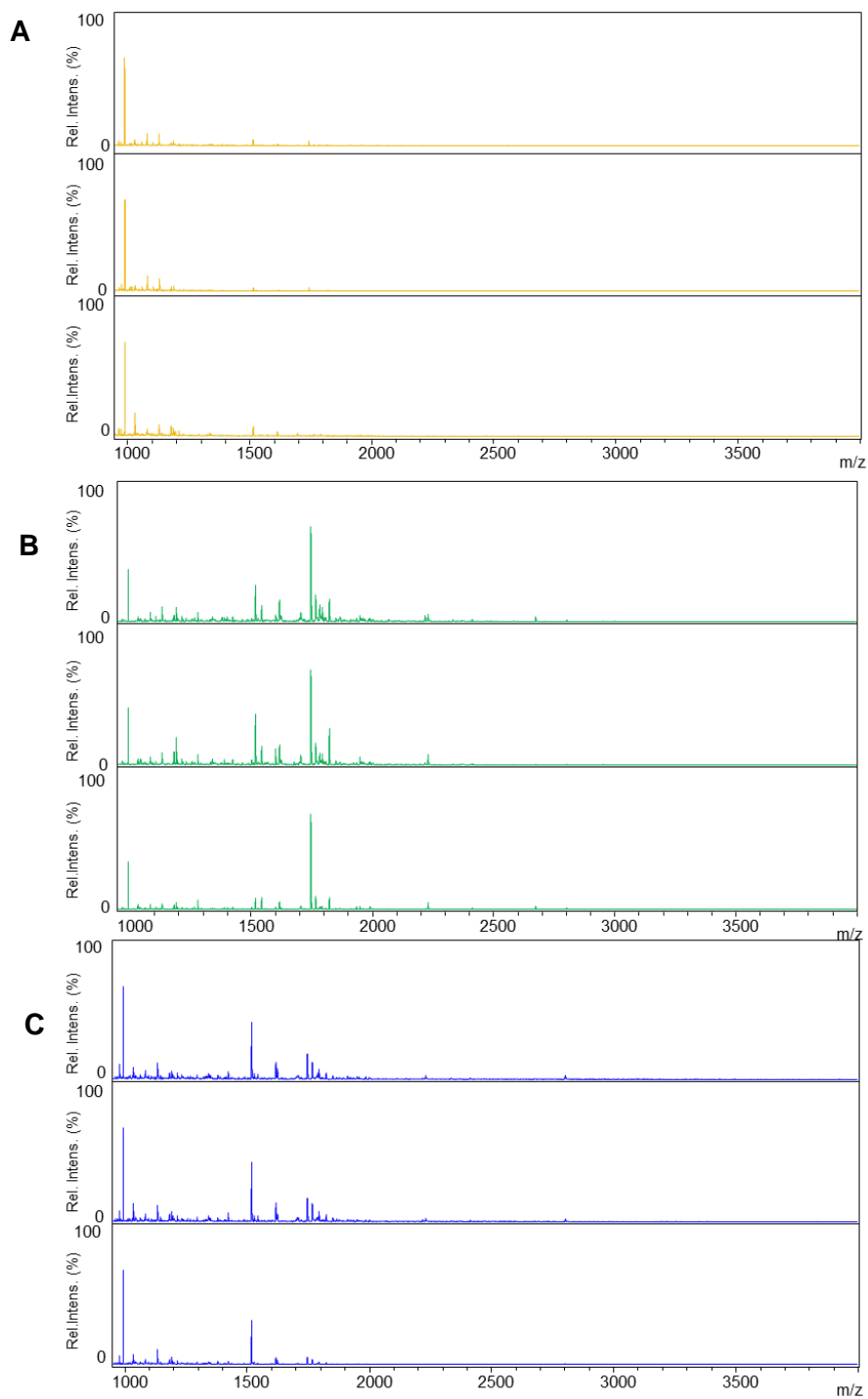
Notre Dame, IN 46556, USA

*Corresponding author

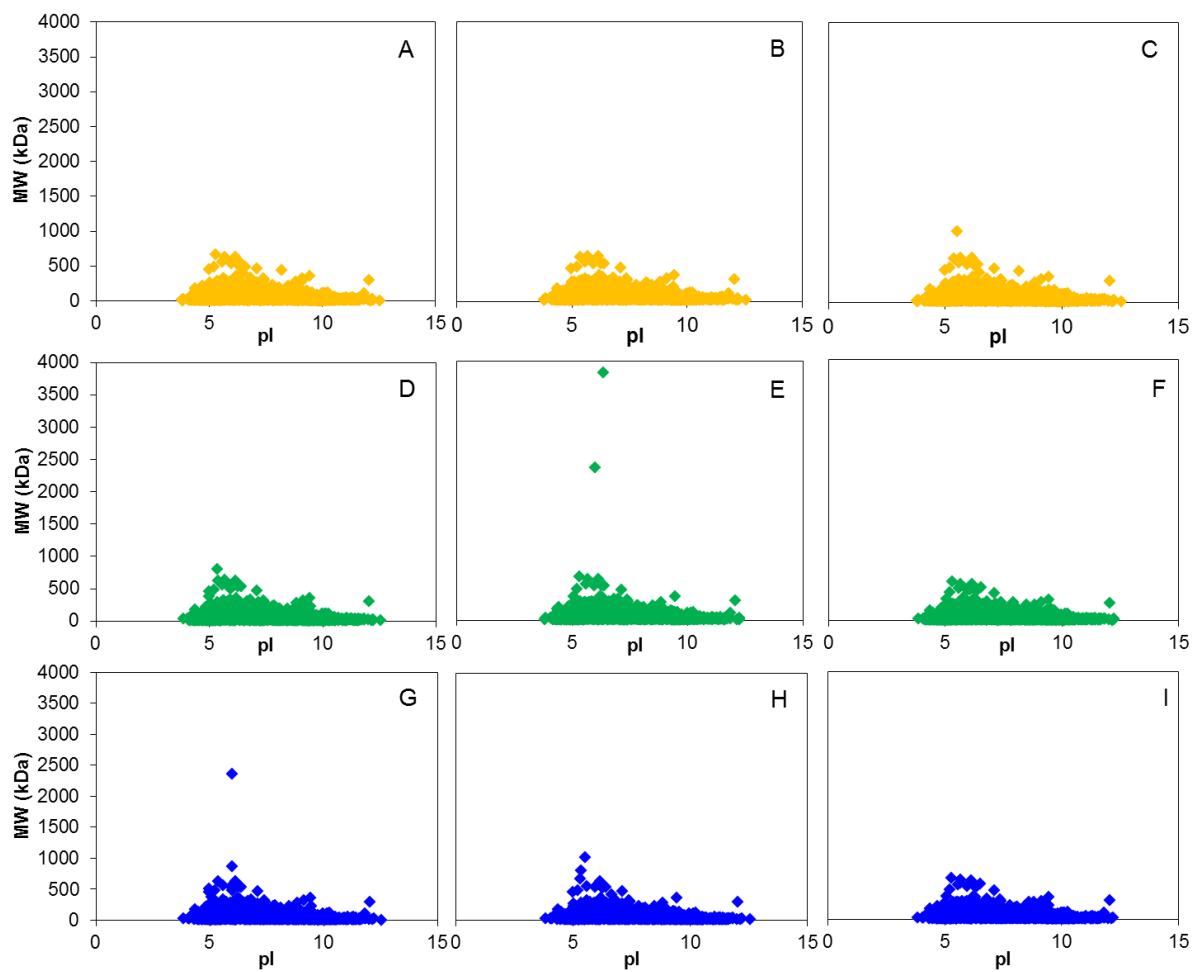
ahummon@nd.edu

Phone: 574-631-0583

Fax: 574-631-6652



Electronic Supplementary Information 1. MALDI-MS spectra of digested protein samples from an SW480 cell pellet that had been embedded in OCT after A) ether-methanol precipitation B) FASP or C) SDS-PAGE to remove OCT contaminating species. The three methods have one spectrum representing each method replicate.



Electronic Supplementary Information 2. Distribution of MW versus pI for identified proteins from LC-MS/MS analysis for OCT removal methods. Ether-methanol precipitation (A-C), FASP (D-F), and SDS-PAGE (G-I) method replicates are represented individually to highlight reproducibility of the results.