

Electronic Supplementary Information

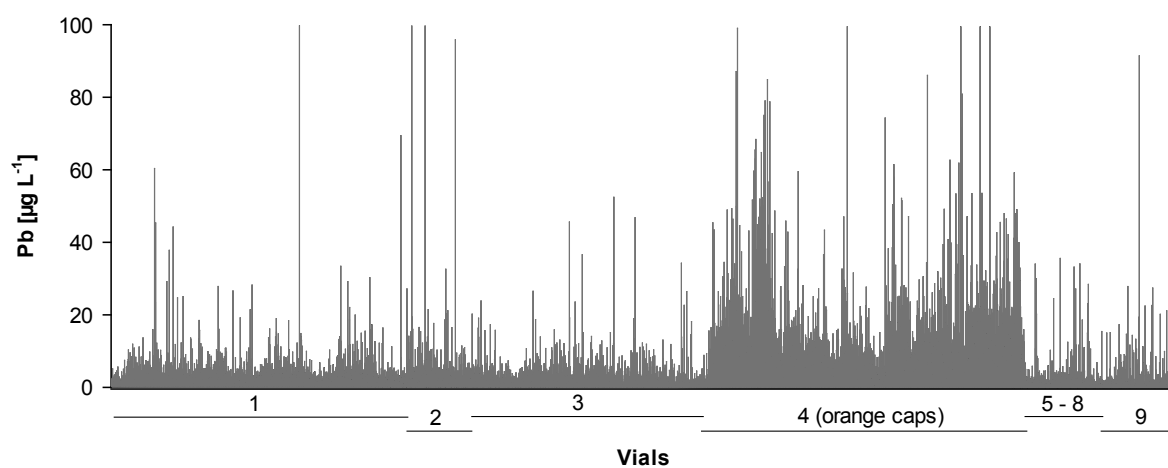


Figure S1. Pb concentrations in urine samples from the Strong Heart Study categorized according to the type of storage vial.

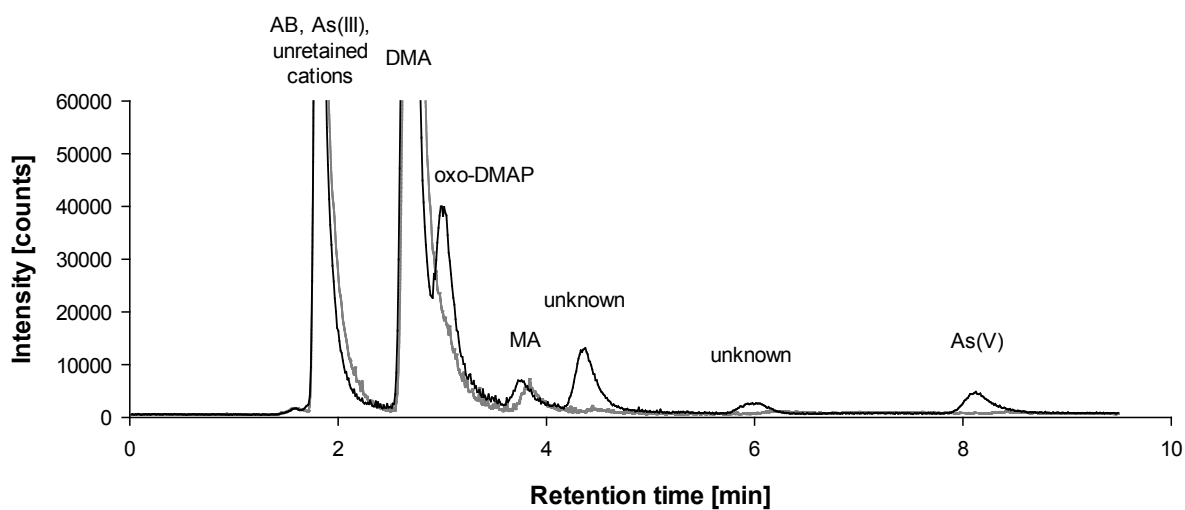


Figure S2: Anion-exchange HPLC/ICPMS chromatograms of a urine sample containing some thio-arsenic compounds (grey line) which elute within 10 minutes after treatment with H_2O_2 (black line). HPLC conditions were: PRP-X100 column (4.6 mm x 150 mm, 5 μm particles) at 40°C with a mobile phase of 20 mM phosphoric acid adjusted with aqueous ammonia to pH 6 at a flow rate of 1 mL min⁻¹. Injection volume was 20 μL . (DMAP Dimethylarsino propionic acid)

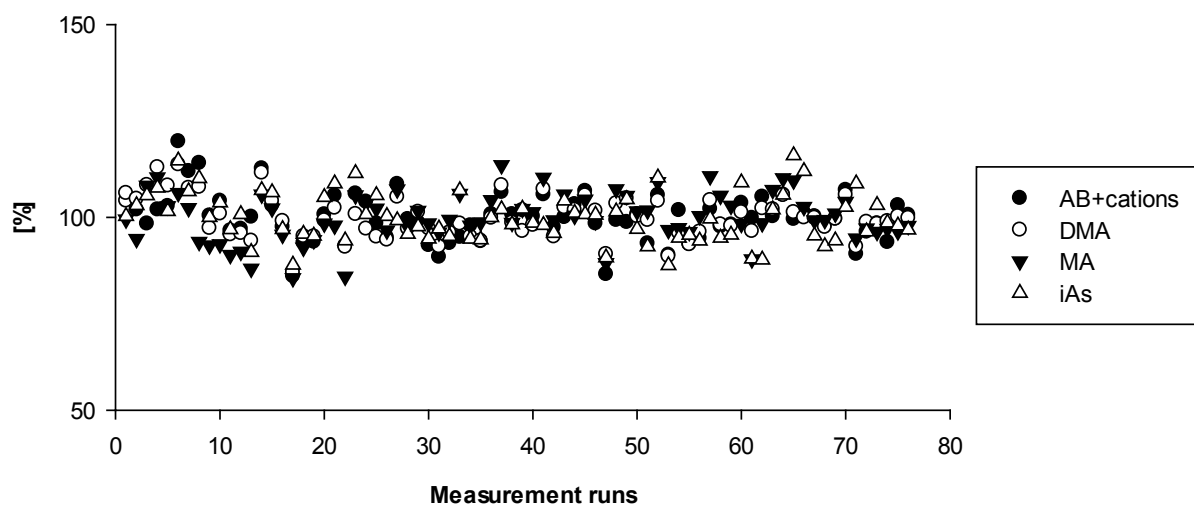


Figure S3: Variation in levels of arsenic species measured in the in-house reference material for 74 batches over a two-year period.

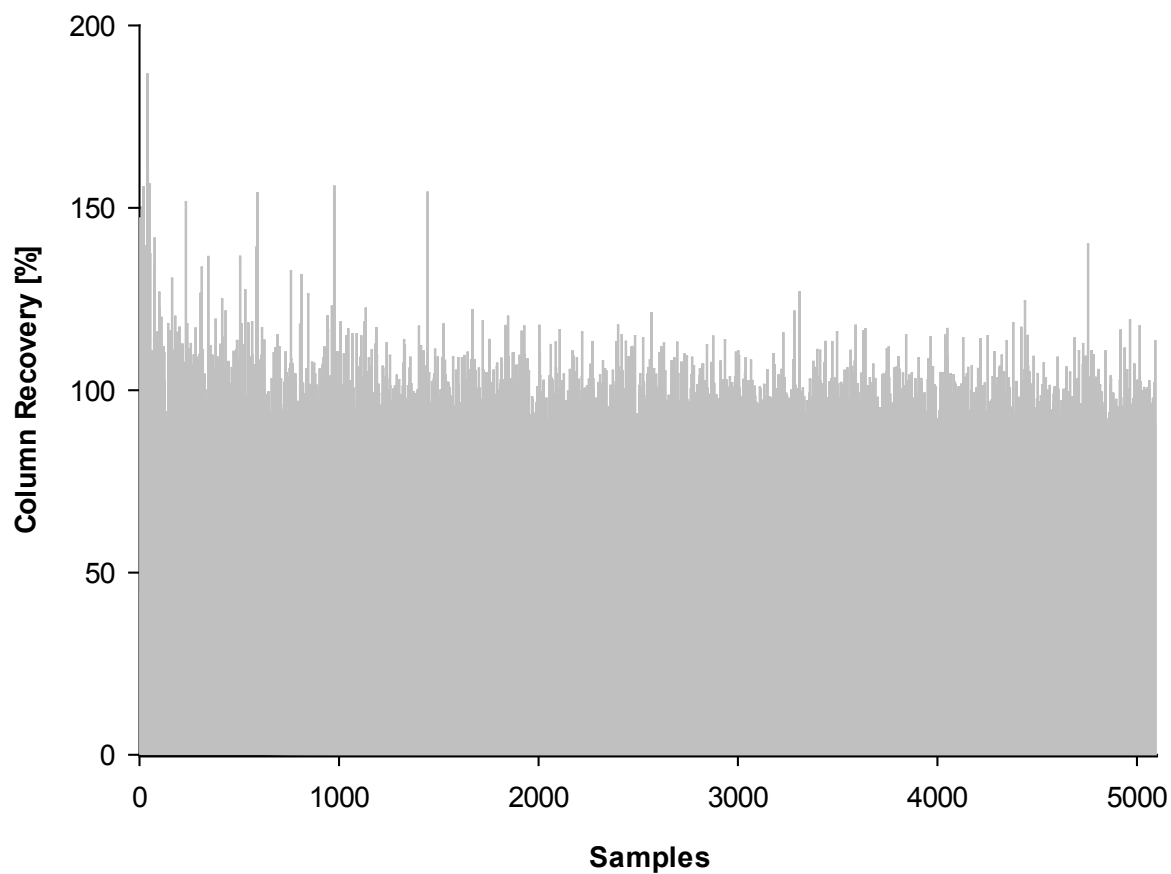


Figure S4: Column recovery for all samples measured over a two-year period (sorted by As concentrations, from lowest to highest).

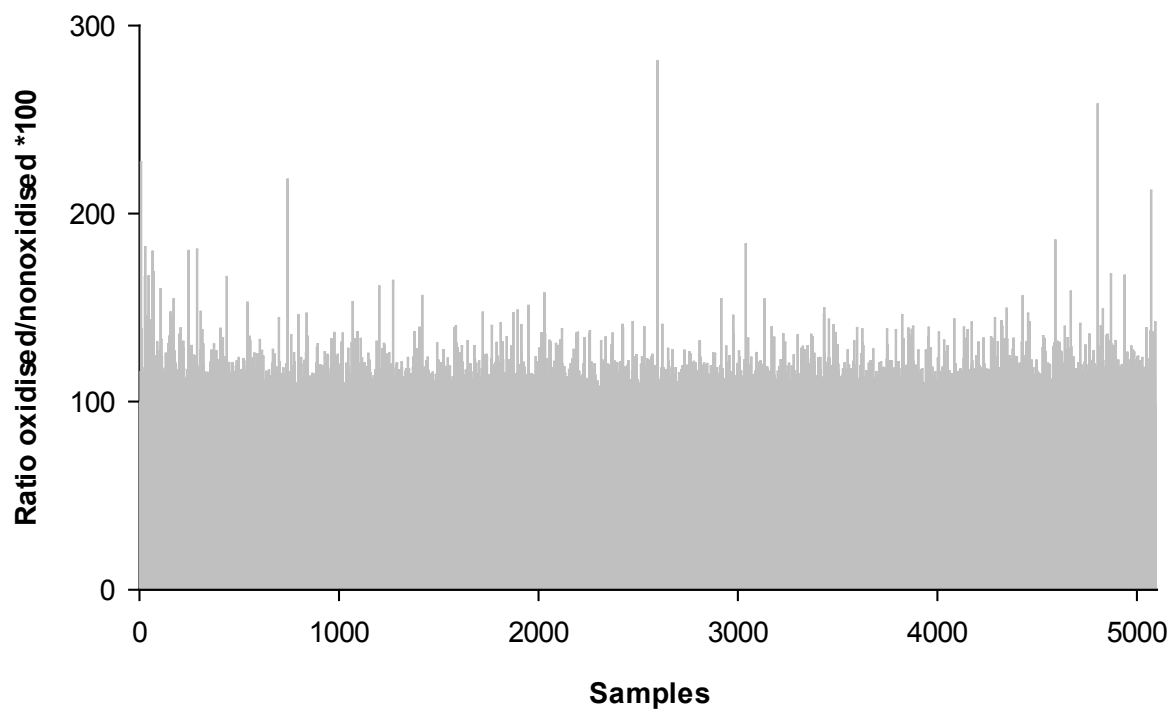


Figure S5: Ratio of oxidised/non-oxidised (sum of species) for all samples measured over a two-year period.