

## Electronic Supplementary Information

### Tetraphenolate niobium and tantalum complexes for the ring opening polymerization of $\epsilon$ -caprolactone

Yahya Al-Khafaji,<sup>a</sup> Xinsen Sun,<sup>a</sup> Timothy. J. Prior,<sup>a</sup> Mark R.J. Elsegood,<sup>b</sup> and Carl Redshaw,<sup>a\*</sup>

<sup>a</sup> Department of Chemistry, University of Hull, Hull, HU6 7RX, U.K.

<sup>b</sup> Chemistry Department, Loughborough University, Loughborough, Leicestershire, LE11 3TU, U.K.

#### Contents

**Figure S1** Molecules of  $L^2H_4 \cdot 2MeCN$  form centrosymmetric pairs encapsulating pairs of symmetry-related acetonitrile molecules.

**Figure S2** Molecular structure of  $4 \cdot 5MeCN$

**Figure S3** Bimodal distribution of products using **2**.

**Figure S4** Plot of monomer conversion *versus* number average molecular weight for **2** (low molecular weight fraction).

**Figure S5** Plot of monomer conversion *versus* number average molecular weight for **2** (high molecular weight fraction).

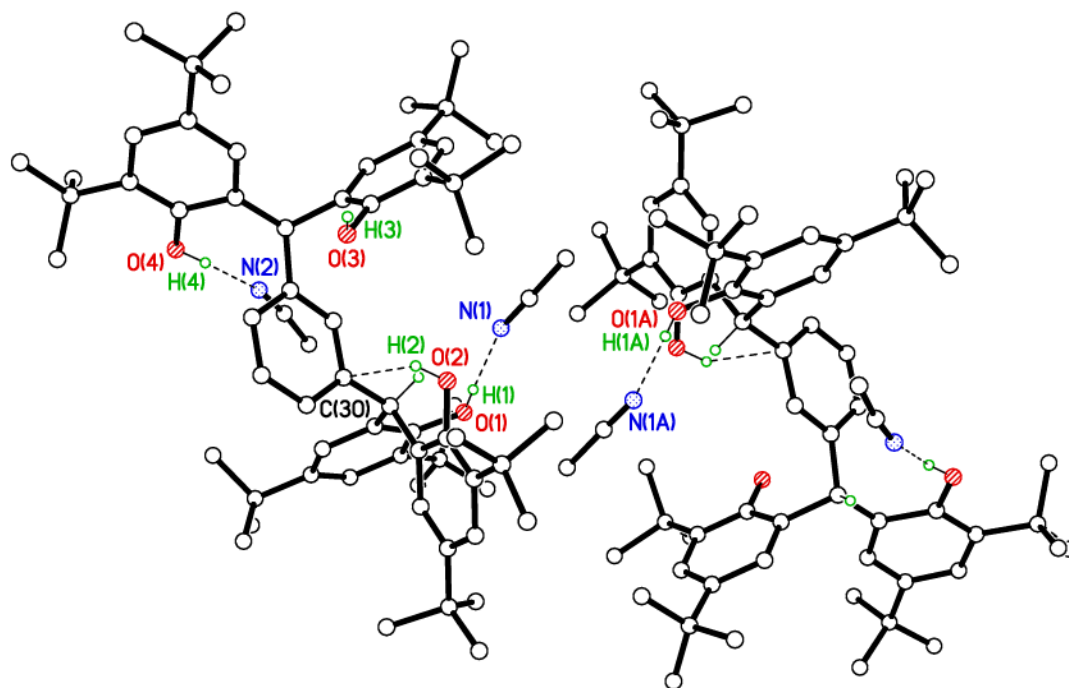
**Figure S6**  $M_n$  (low molecular weight fraction) *versus*  $[CL]/[2]$

**Figure S7**  $M_n$  (high molecular weight fraction) *versus*  $[CL]/[2]$

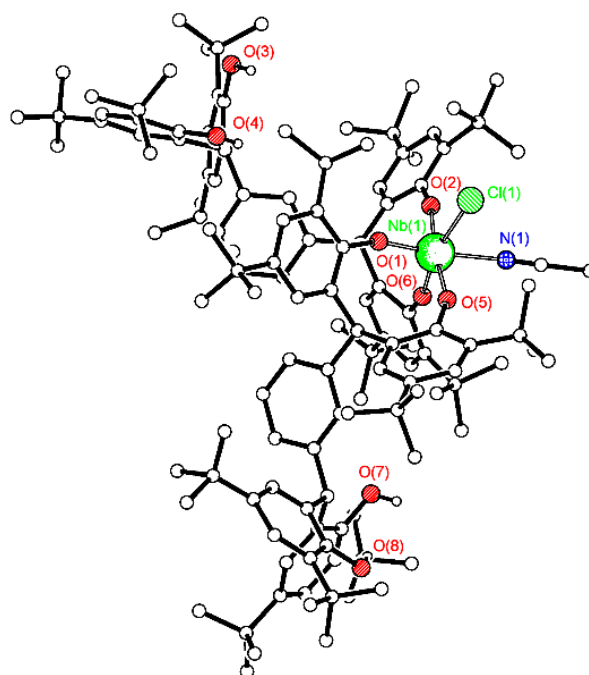
**Figure S8** MALDI-TOF spectrum of PCL from run 22 (Table 2).

**Figure S9**  $^1H$  NMR spectrum of the PCL from run 6 (Table 2).

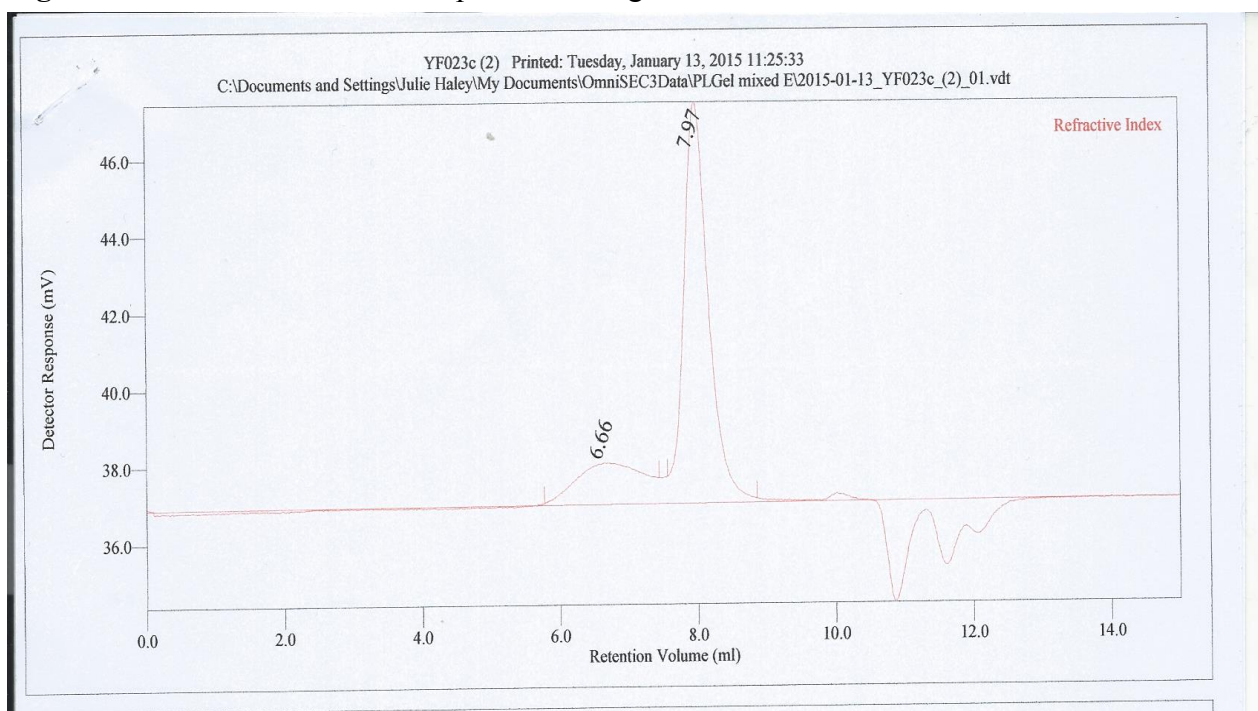
**Figure S1** Molecules of  $L^2H_4 \cdot 2MeCN$  form centrosymmetric pairs encapsulating pairs of symmetry-related acetonitrile molecules.



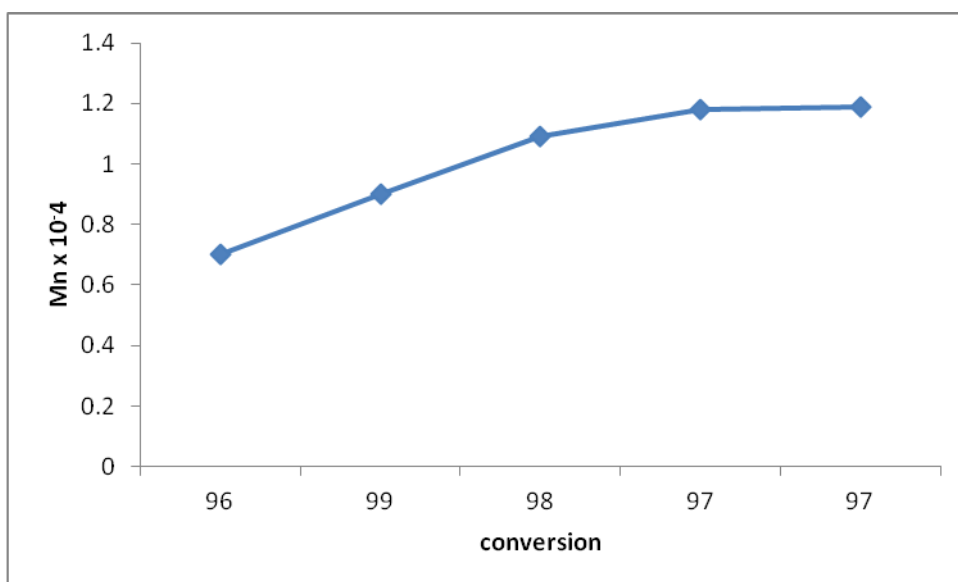
**Figure S2** Molecular structure of  $4 \cdot 5MeCN$



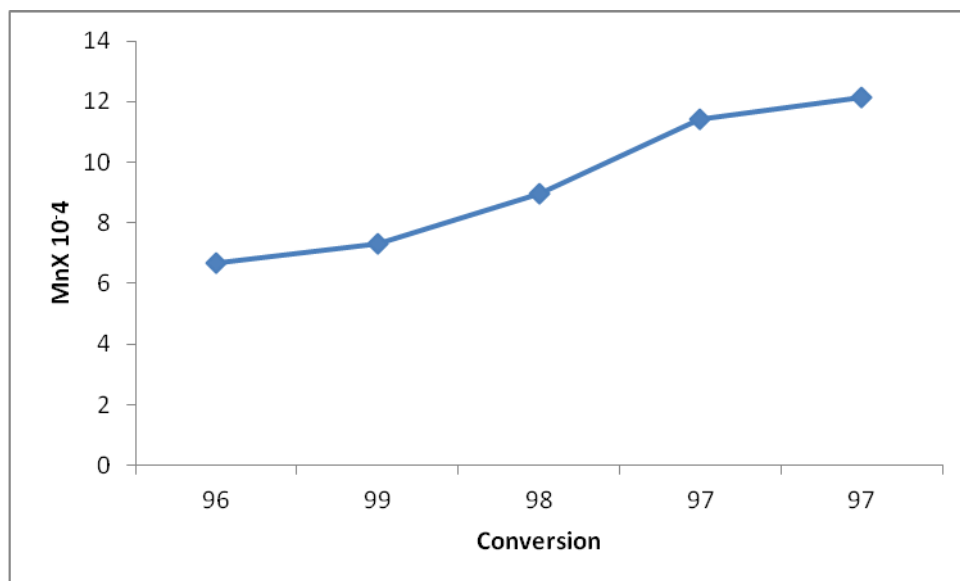
**Figure S3** Bimodal distribution of products using **2**.



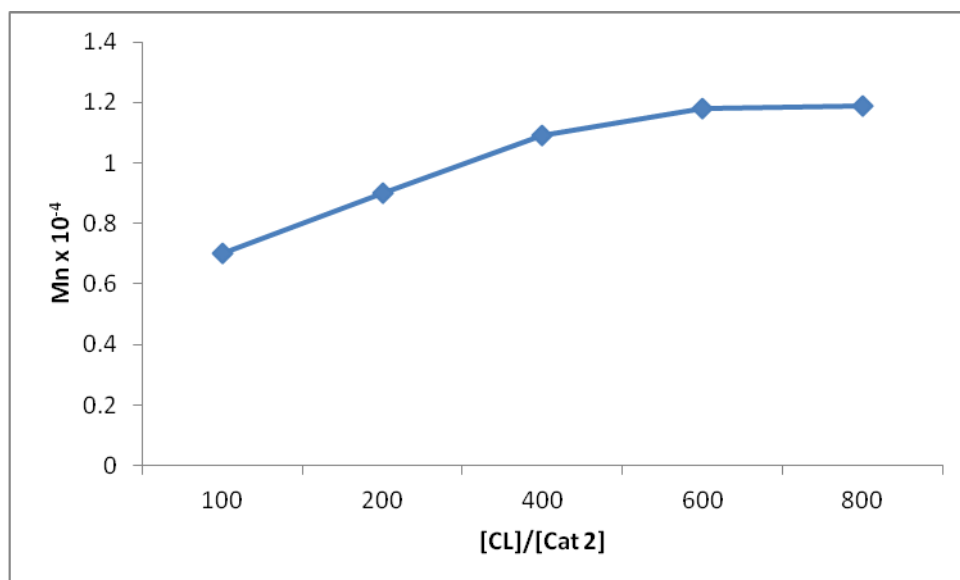
**Figure S4** Plot of monomer conversion *versus* number average molecular weight for **2** (low molecular weight fraction).



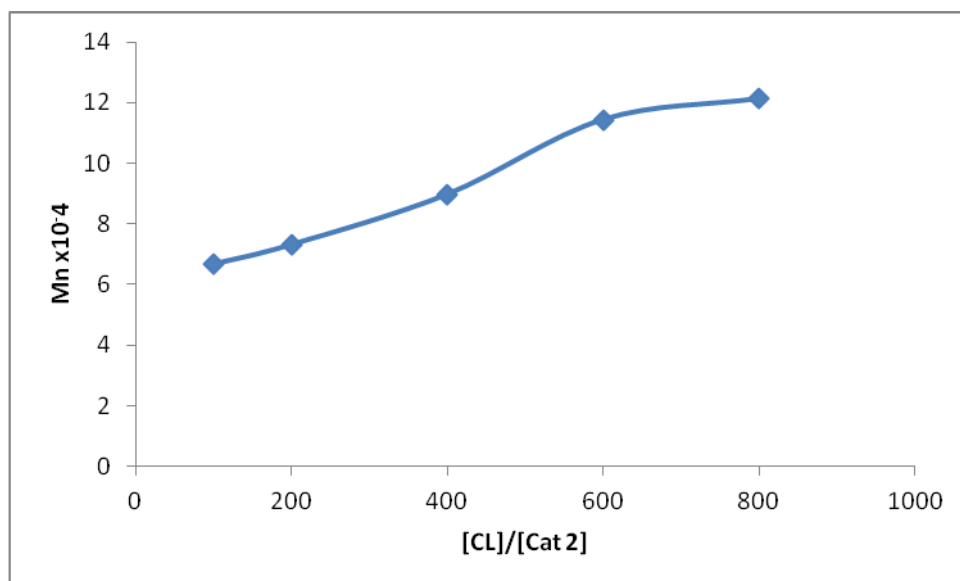
**Figure S5** Plot of monomer conversion *versus* number average molecular weight for **2** (high molecular weight fraction).



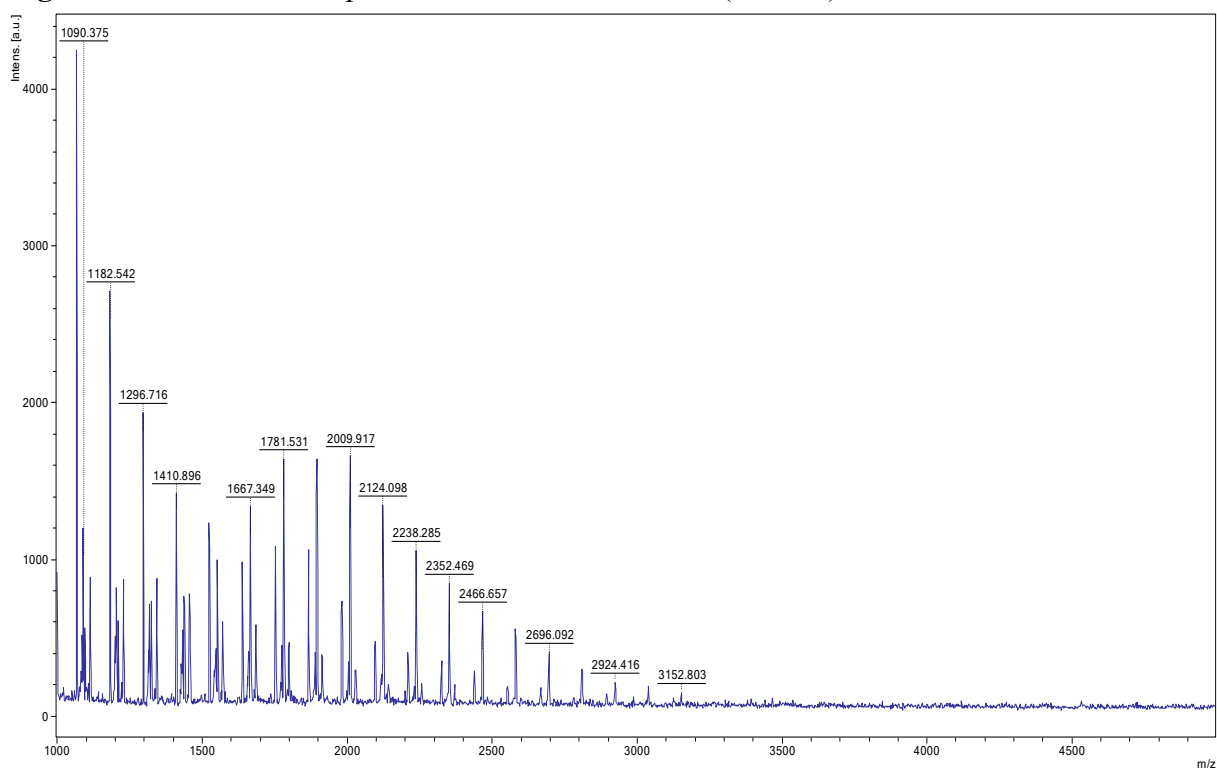
**Figure S6**  $M_n$  (low molecular weight fraction) *versus*  $[CL]/[2]$



**Figure S7**  $M_n$  (high molecular weight fraction) *versus*  $[CL]/[2]$



**Figure S8** MALDI-TOF spectrum of PCL from run 22 (Table 2).



**Figure S9**  $^1\text{H}$  NMR spectrum of the PCL from run 6 (Table 2).

