

Supplementary information for

Phase II Metabolic Pathways of Spectinamide Antitubercular Agents: A Comparative study of the reactivity of 4-Chloro substituted pyridines to glutathione conjugation

Dora Babu Madhura^a, Jiuyu Liu^b, Bernd Meibohm^a and Richard E. Lee^{b*}

^a Department of Pharmaceutical Sciences, University of Tennessee Health Science Center,
Memphis, TN 38105, USA;

^b Department of Chemical Biology and Therapeutics, St. Jude Children's Research Hospital,
Memphis, TN 38105, USA.

List of Supplementary information

1. Figure S1. Percent parent compound remaining after Glucuronide conjugation reaction.
2. Figure S2. Percent parent compound remaining after Sulfoconjugation reaction.
3. Table S1. Glucuronide Conjugation of Spectinamide compounds in rat and human liver S9 fraction (n=3)
4. Table S2. Sulfoconjugation of Spectinamide compounds in rat and human liver S9 fraction (n=3)

Fig S1: Percent parent compound remaining after Glucuronide conjugation reaction in rat liver S9 fraction (n=3). *indicates statistically significant differences from the initial concentration

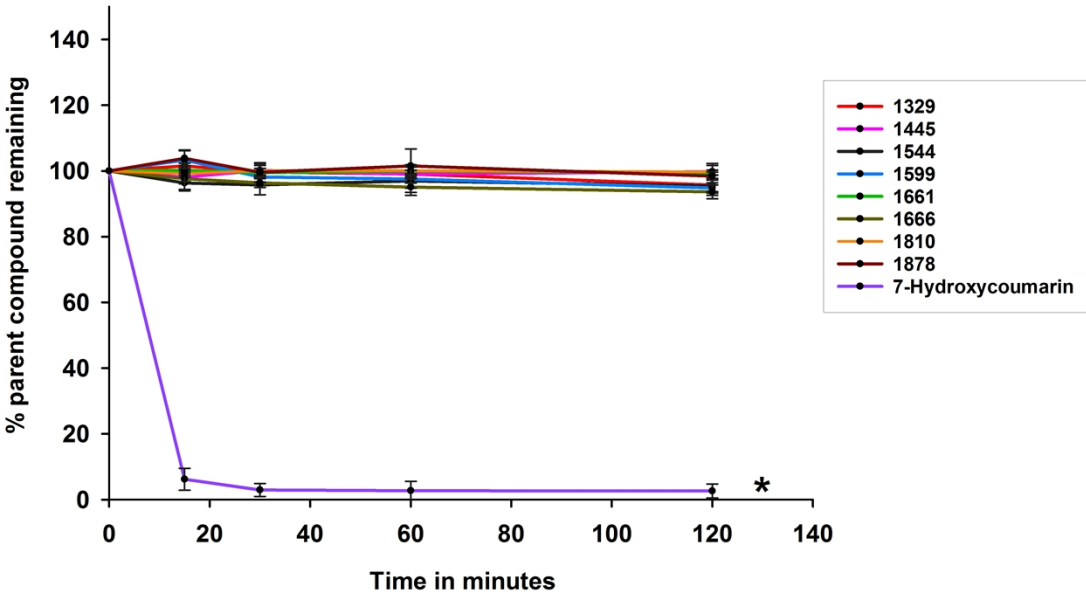


Fig S2: Percent parent compound remaining after Sulfoconjugation reaction in rat liver S9 fraction (n=3). *indicates statistically significant differences from the initial concentration

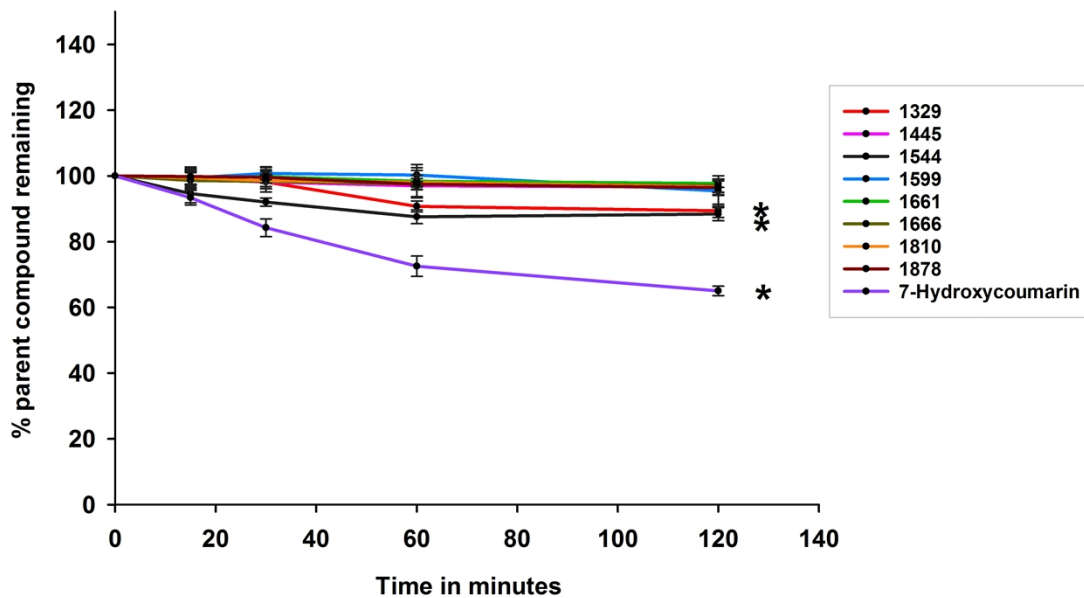


Table S1: Glucuronide Conjugation of Spectinamide compounds in rat and human liver S9 fraction (mean (%CV) of 3 replicates).

Compound	Glucuronide Conjugation	
	Rat	Human
	% parent remaining after 2 h	% parent remaining after 2 h
1329	95.7 (3.1)	93.9 (2.9)
1445	99.8 (2.5)	96.7 (5.5)
1544	95.5 (1.8)	97.8 (2.1)
1599	94.8 (1.6)	99.4 (0.54)
1661	99.5 (0.8)	97.0 (8.8)
1666	93.7 (2.1)	93.5 (0.55)
1810	99.7 (2.0)	96.7 (4.3)
1878	98.5 (1.2)	98.6 (2.8)
7-HC	2.6 (2.1)	5.6 (11.3)

Table S2: Sulfoconjugation of Spectinamide compounds in rat and human liver S9 fraction (mean (%CV) of 3 replicates).

Compound	Sulfoconjugation	
	Rat	Human
	% parent remaining after 2 h	% parent remaining after 2 h
1329	89.4 (2.0)	96.8 (1.5)
1445	96.6 (2.5)	98.7 (2.7)
1544	88.4 (1.9)	98.0 (2.8)
1599	95.5 (4.6)	99.8 (1.2)
1661	97.7 (1.2)	97.5 (1.8)
1666	97.1 (2.0)	90.8 (3.1)
1810	96.7 (1.8)	99.4 (0.6)
1878	96.5 (2.1)	96.8 (1.4)
7-HC	65.0 (1.4)	70.8 (5.7)