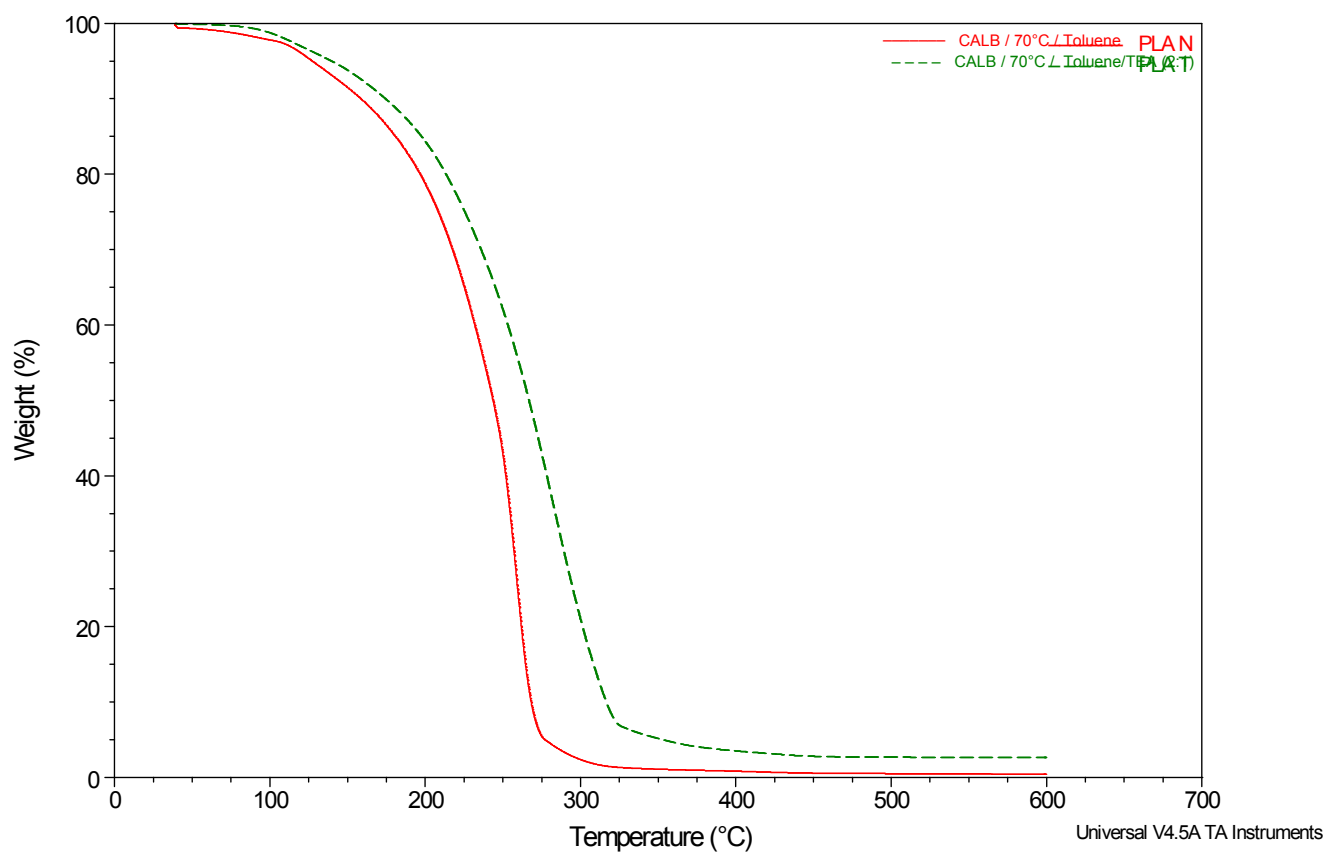


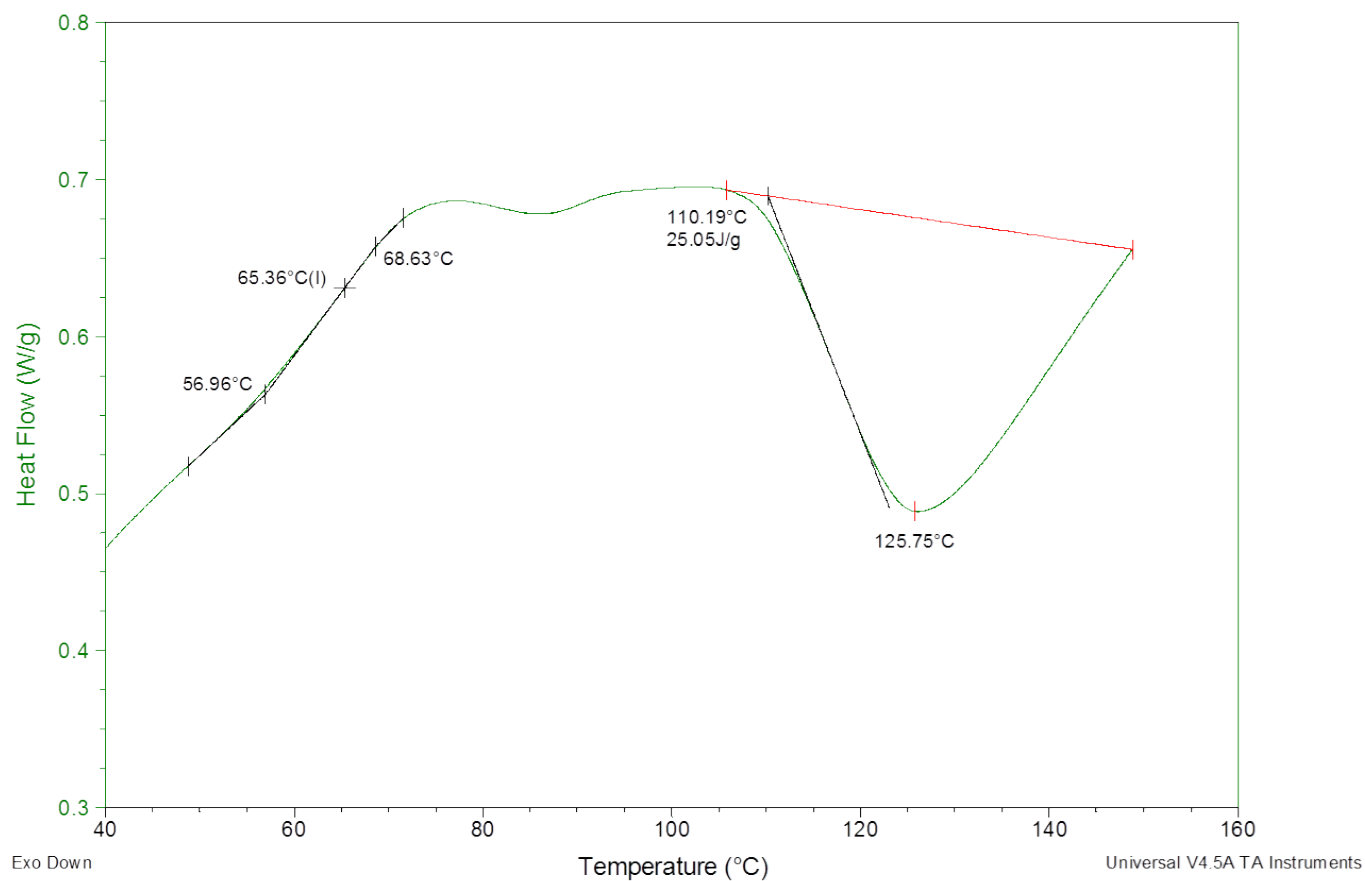
Mixed systems to assist enzymatic ring opening polymerization of lactide stereoisomers

S. W. Duchiron,^a E. Pollet,^a S. Givry,^b and L. Avérous^a

TGA Analysis of formed PLA

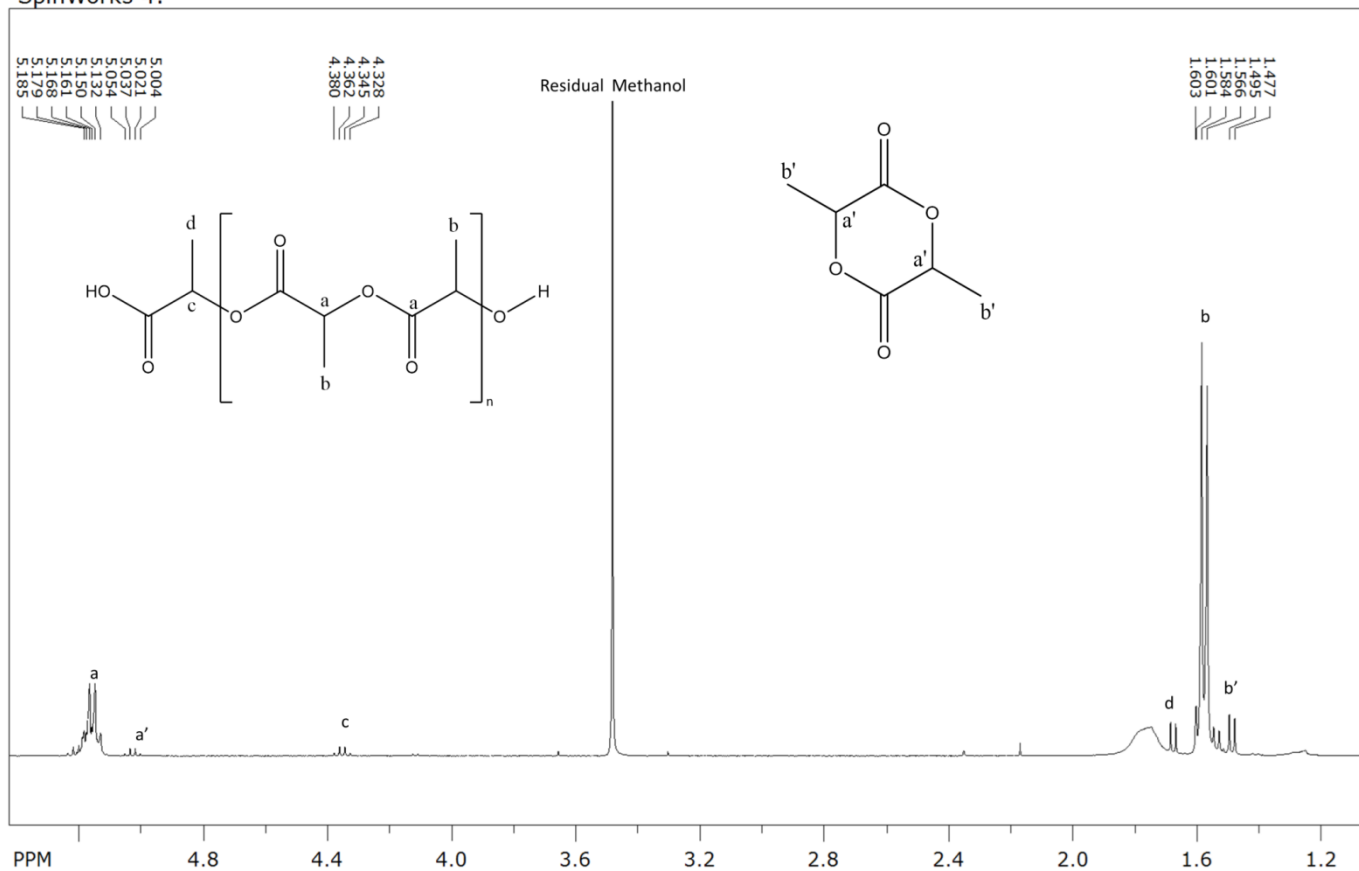


Example of DSC of PLA sample synthesized by enzymatic ROP of Lactide



Example of ^1H NMR of PLA sample synthesized by enzymatic ROP of Lactide

SpinWorks 4:



Example of IR spectrum of PLA sample synthesized by enzymatic ROP of Lactide

