

## Supporting information

### A Self-assembled Lysinated Perylene Diimide Film as Multifunctional Material and Interface

*Simone Bonetti,\*<sup>a</sup> Mario Prosa,<sup>a</sup> Assunta Pistone,<sup>a</sup> Laura Favaretto,<sup>b</sup> Anna Sagnella,<sup>c</sup> Ilja Grisin,<sup>d</sup> Massimo Zambianchi,<sup>b</sup> Saskia Karges,<sup>a</sup> Andrea Lorenzoni,<sup>a</sup> Tamara Posati,<sup>b</sup> Roberto Zamboni,<sup>b</sup> Nadia Camaioni,<sup>b</sup> Francesco Mercuri,<sup>a</sup> Michele Muccini,<sup>a</sup> Manuela Melucci\*<sup>b</sup> and Valentina Benfenati\*<sup>b</sup>*

<sup>a</sup> Consiglio Nazionale delle Ricerche (CNR) Istituto per lo Studio dei Materiali Nanostrutturati (ISMN),  
via Gobetti, 101, 40129 Bologna , Italy

<sup>b</sup> Consiglio Nazionale delle Ricerche (CNR) Istituto per la Sintesi Organica e la Fotoreattività (ISOF), via  
Gobetti, 101, 40129 Bologna , Italy

<sup>c</sup> Laboratory MIST E-R, Via Gobetti 101, 40129 Bologna , Italy

<sup>d</sup> ETC s.r.l. Via Gobetti 101, 40129 Bologna , Italy Bologna, Italy

\*E-mail: [simone.bonetti@bo.ismn.cnr.it](mailto:simone.bonetti@bo.ismn.cnr.it)

\*E-mail: [valentina.benfenati@isof.cnr.it](mailto:valentina.benfenati@isof.cnr.it)

\*E-mail: [manuela.melucci@isof.cnr.it](mailto:manuela.melucci@isof.cnr.it)

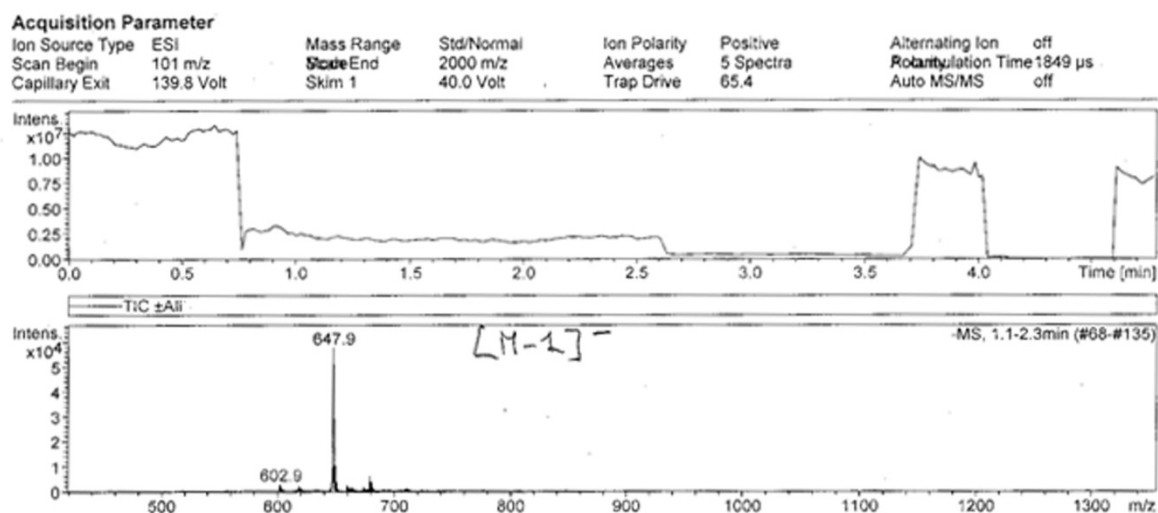


Figure S1. ESI-MS spectrum of PDI-Lys 4.

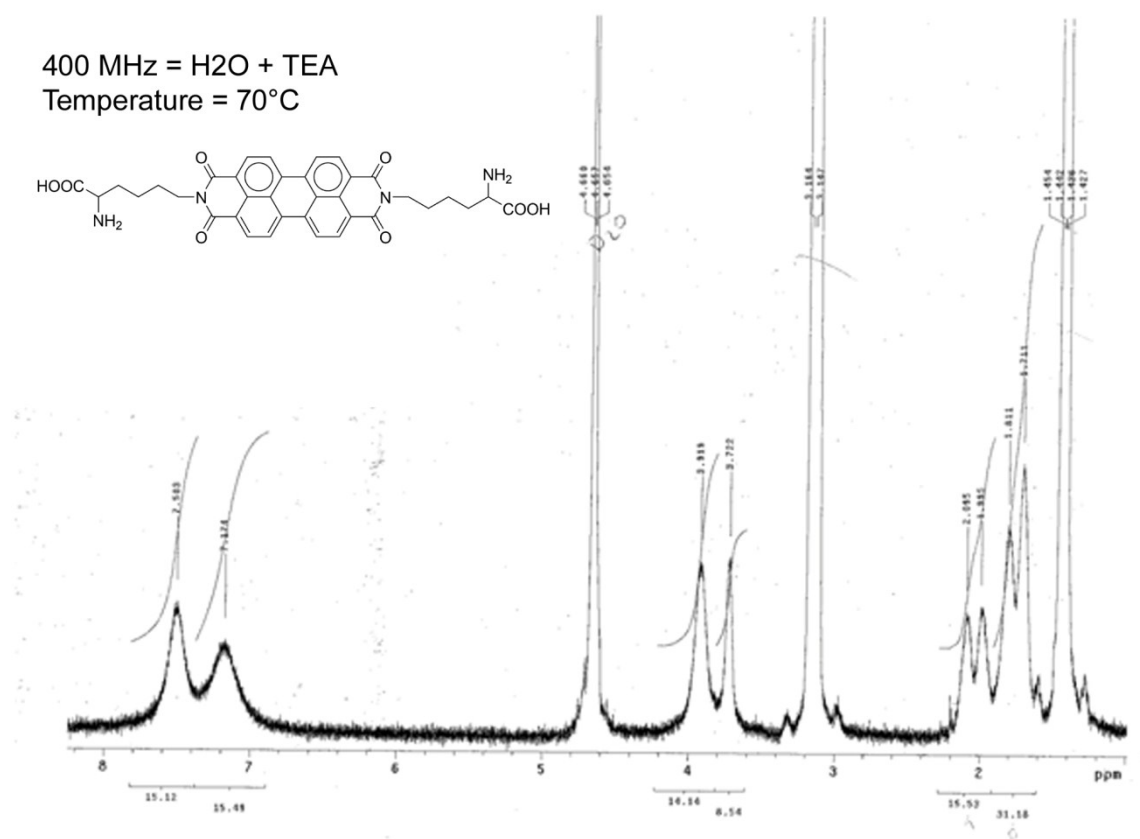


Figure S2. <sup>1</sup>H NMR spectrum of PDI-Lys in D<sub>2</sub>O at 70°C.

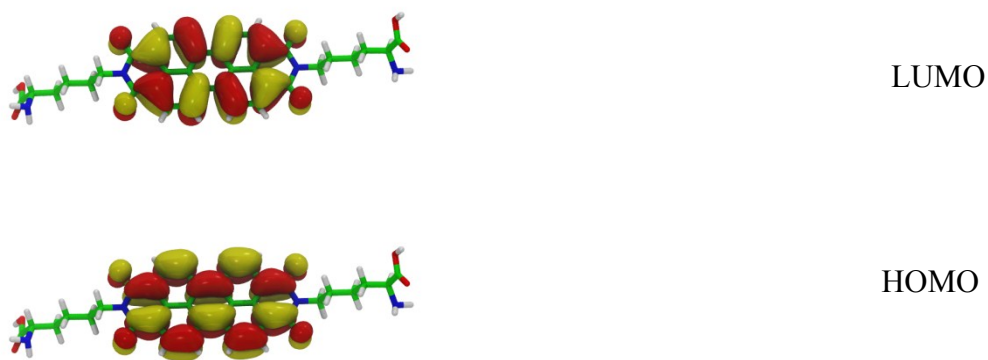


Figure S3. Topology of the HOMO (bottom) and LUMO (top) for PDI-Lys in the neutral state

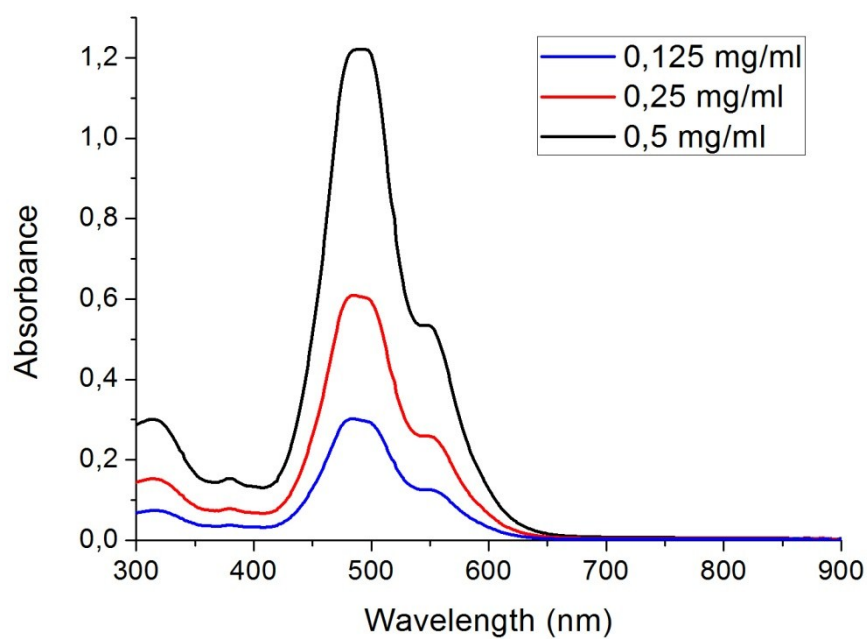


Figure S4. Absorbance spectra of PDI-Lys solution in distilled H<sub>2</sub>O.

<b>Sample</b>	<b>Conductivity after 1 day (S x m<sup>-1</sup>)</b>	<b>Conductivity after 10 days (S x m<sup>-1</sup>)</b>
<b>PMMA/Au/PDI-Lys</b>	2.1 ± 0.7	5.4 ± 0.9
<b>PMMA/Ag/PDI-Lys</b>	0.6 ± 0.1	1.2 ± 0.2
<b>SiO<sub>2</sub>/Au/PDI-Lys</b>	1.0 ± 0.1	1.5 ± 0.2

Table S1. Conductivity values of PDI-Lys casted films on different substrates and different top electrodes (10 devices per condition) measured in inert atmosphere.