

Supplemental material:

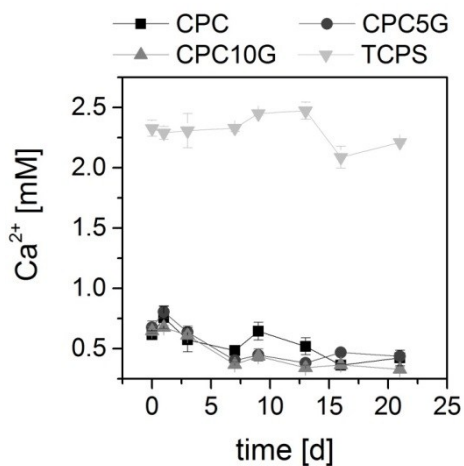


Fig. S1 Ca²⁺-concentrations in cell culture medium during immersion of CPC and CPC/MBG composites over 21 days.

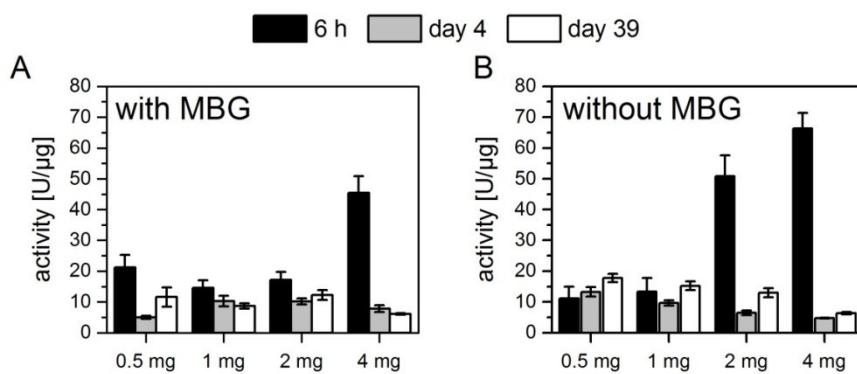


Fig. S2 Enzyme activity of Lyz released from CPC5G (A) and CPC (B) over 39 days.

Table S1: Parameters determined by a *Korsmeyer-Peppas*-fit ($Y = k \cdot t^n$, where Y is the cumulative release within the time t , k is a constant and the release exponent n indicating the release mechanism) of the release profiles of Lyz and VEGF from CPC and CPC10G.

		a	±	b	±	R²
Lysozyme (Lyz)	CPC					
	0.5 mg/sample	0.1114	0.0032	0.3632	0.0128	0.9936
	1.0 mg/sample	0.1190	0.0196	0.5797	0.0706	0.8706
	2.0 mg/sample	0.0937	0.0084	0.6731	0.0485	0.9104
	4.0 mg/sample	0.1054	0.0097	0.5623	0.0380	0.9069
	CPC10G					
	0.5 mg/sample	0.0654	0.0047	0.1982	0.0344	0.8647
	1.0 mg/sample	0.0822	0.0067	0.5375	0.0408	0.8984
VEGF	CPC					
	0.5 µg/sample	0.0015	0.0001	0.5916	0.0353	0.9919
	1.0 µg/sample	0.0020	0.0001	0.4547	0.0199	0.9923
	CPC10G					
	0.5 µg/sample	0.0003	0.0000	0.2813	0.0591	0.8660
	1.0 µg/sample	0.0001	0.0000	0.4088	0.0682	0.9215