

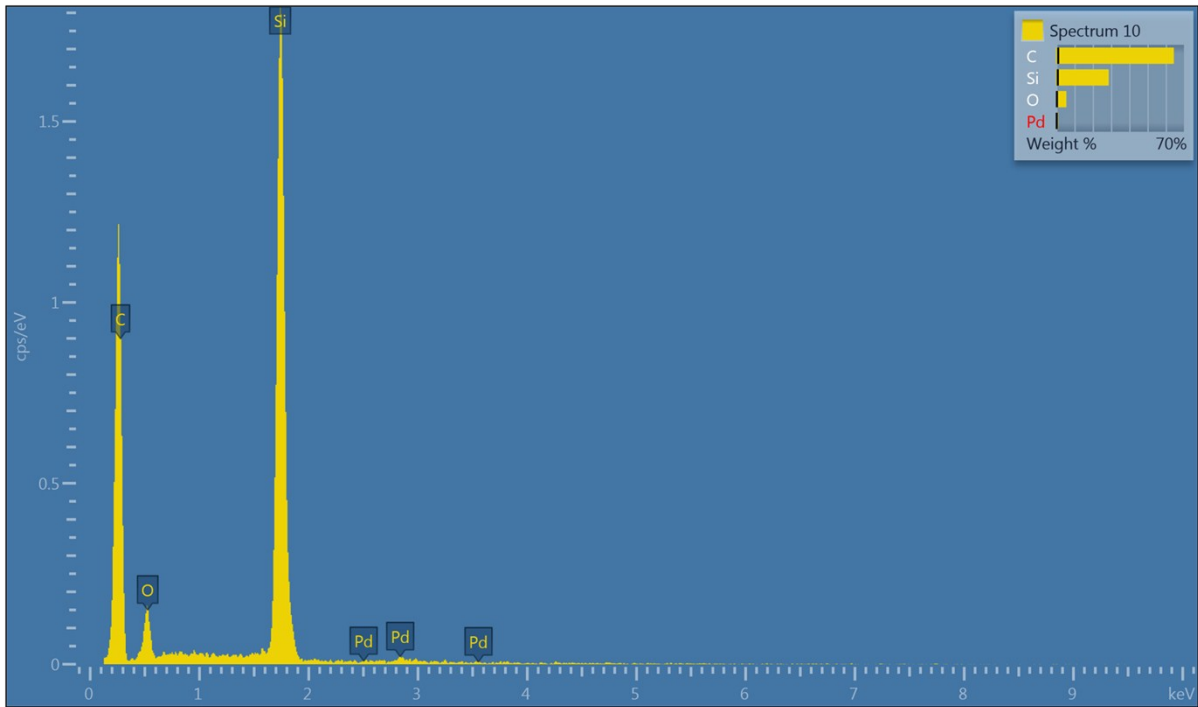
Electronic Supporting Information for

Pd(0) loaded Zn(AzoBDC)(Dabco) as heterogeneous catalyst

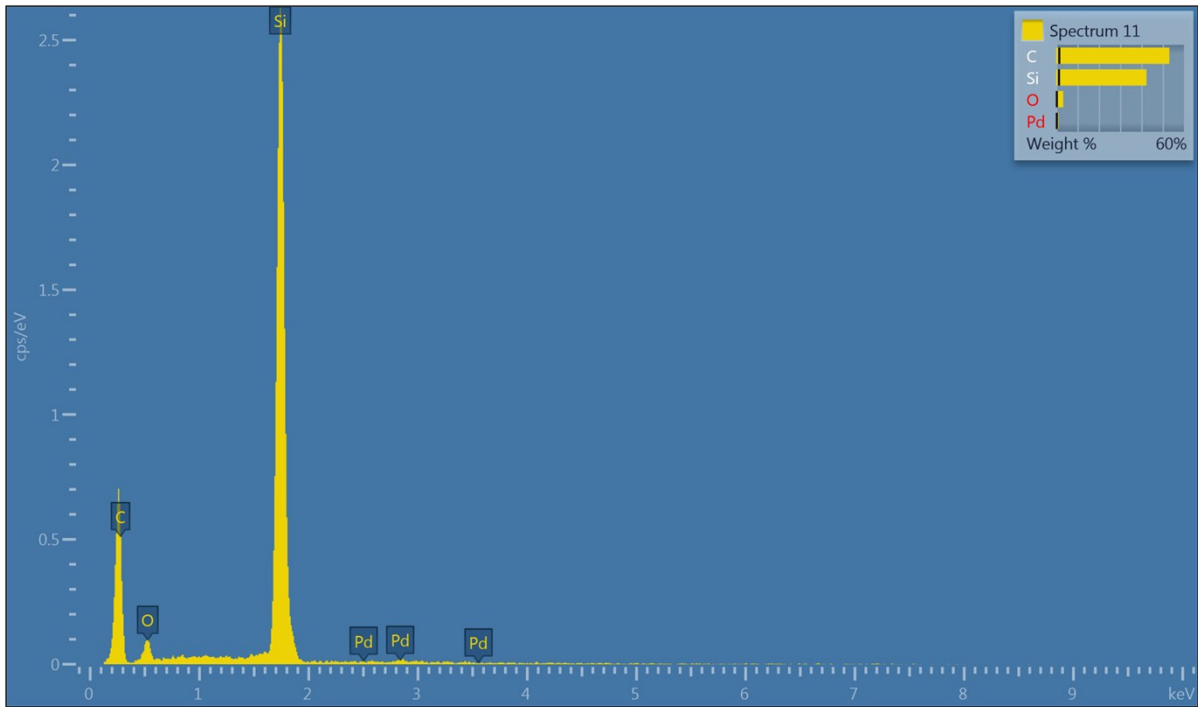
Ke Xie[‡], Yingdian He[‡], Qinghu Zhao, Jin Shang, Qinfen Gu, Greg G. Qiao, Paul A. Webley*

^a*Department of Chemical and Biomolecular Engineering, The University of Melbourne, Victoria 3010, Australia. E-mail: paul.webley@unimelb.edu.au*

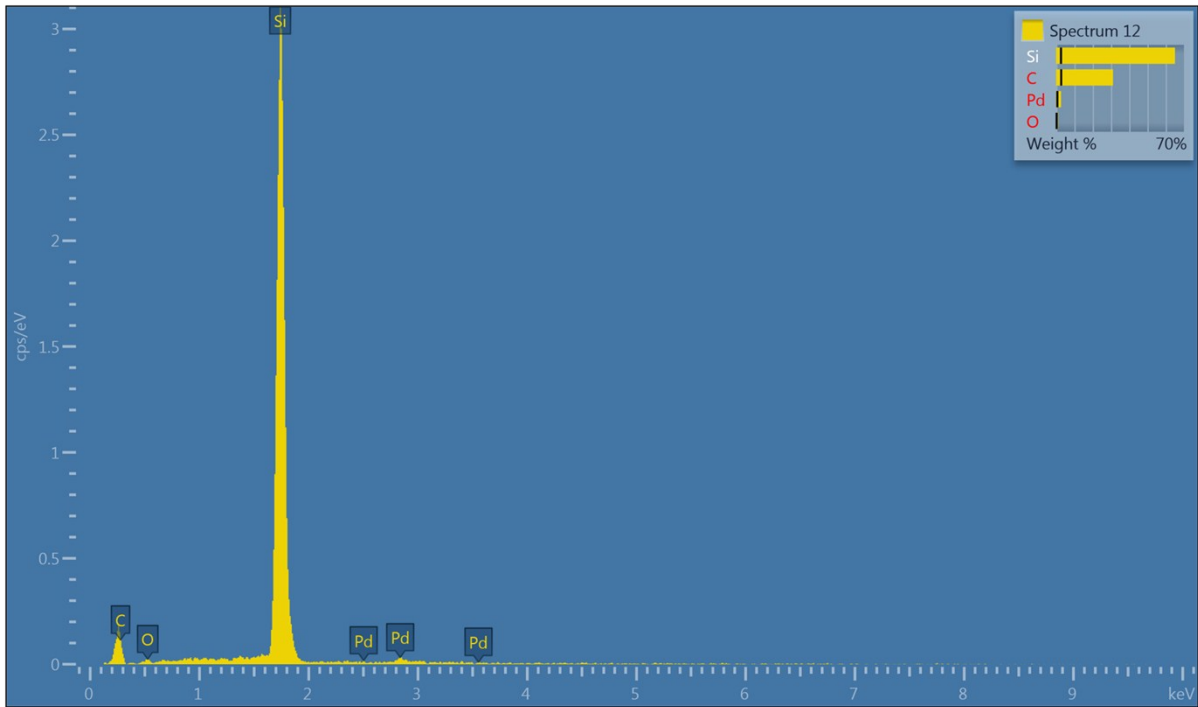
^b*Cooperative Research Center for Greenhouse Gas Technologies (CO2CRC), Melbourne, Australia.*



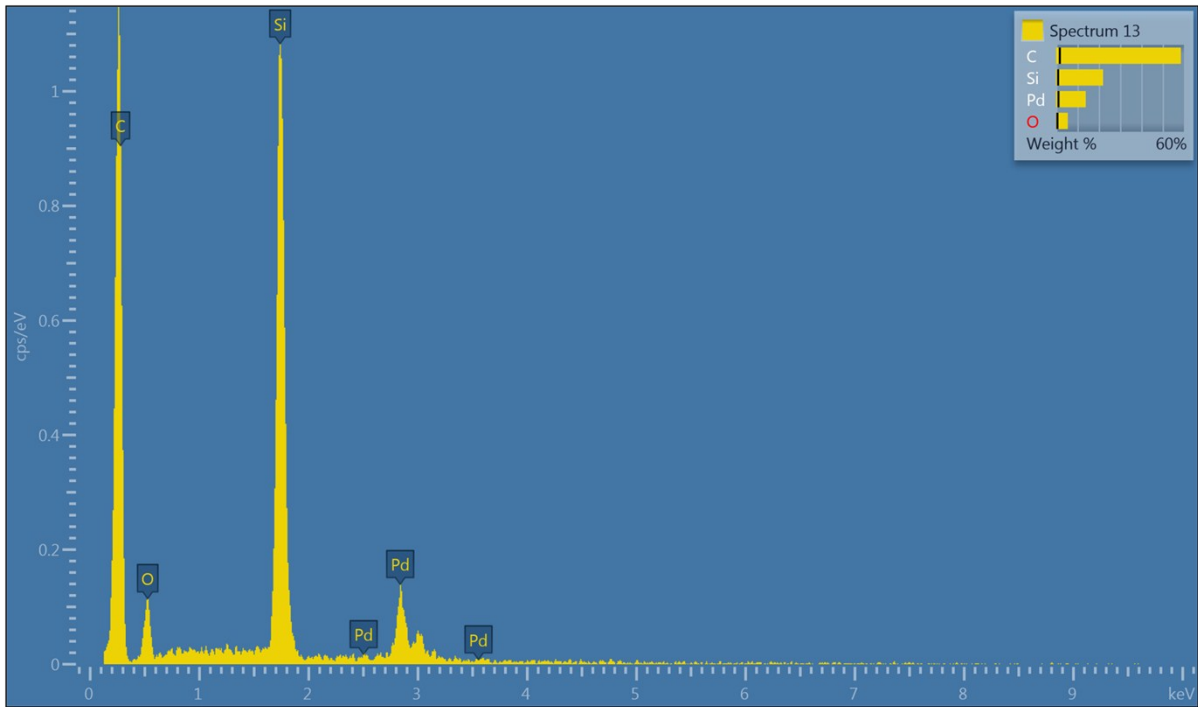
Element	Line Type	Apparent Concentration	k Ratio	Wt%	Wt% Sigma	Atomic %
C	K series	1.56	0.01561	64.46	1.16	79.46
O	K series	0.38	0.00129	5.62	0.45	5.20
Si	K series	2.27	0.01796	28.82	0.93	15.19
Pd	L series	0.05	0.00052	1.11	0.34	0.15
Total:				100.00		100.00



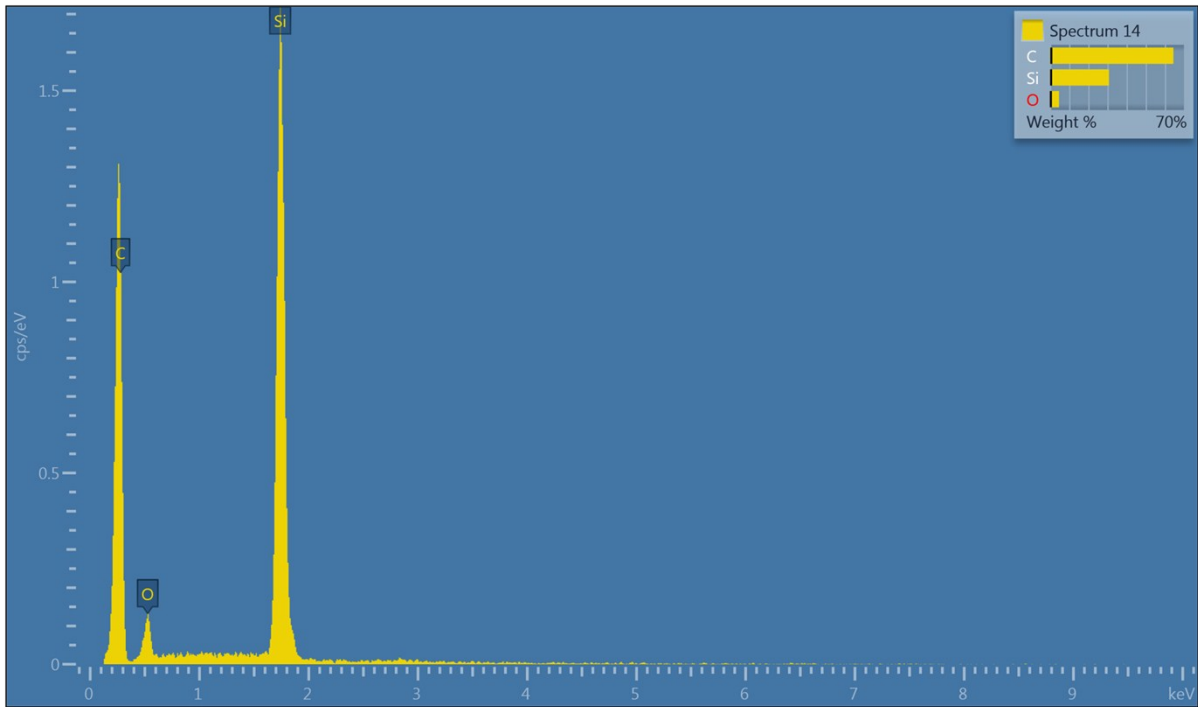
Element	Line Type	Apparent Concentration	k Ratio	Wt%	Wt% Sigma	Atomic %
C	K series	0.89	0.00893	53.14	1.49	71.90
O	K series	0.23	0.00076	3.34	0.35	3.39
Si	K series	3.25	0.02574	42.42	1.35	24.54
Pd	L series	0.05	0.00049	1.10	0.34	0.17
Total:				100.00		100.00



Element	Line Type	Apparent Concentration	k Ratio	Wt%	Wt% Sigma	Atomic %
C	K series	0.26	0.00260	31.16	2.79	51.86
O	K series	0.06	0.00019	1.04	0.30	1.31
Si	K series	3.76	0.02977	65.08	2.68	46.32
Pd	L series	0.09	0.00088	2.72	0.69	0.51
Total:				100.00		100.00



Element	Line Type	Apparent Concentration	k Ratio	Wt%	Wt% Sigma	Atomic %
C	K series	1.49	0.01486	58.54	1.73	79.46
O	K series	0.31	0.00104	5.50	0.62	5.61
Si	K series	1.45	0.01151	22.06	0.96	12.80
Pd	L series	0.56	0.00560	13.91	1.11	2.13
Total:				100.00		100.00



Element	Line Type	Apparent Concentration	k Ratio	Wt%	Wt% Sigma	Atomic %
C	K series	1.30	0.01297	64.49	0.71	79.43
O	K series	0.28	0.00095	4.70	0.46	4.34
Si	K series	2.13	0.01689	30.81	0.60	16.23
Total:				100.00		100.00