

Supporting Information

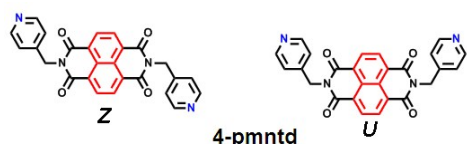
Received 00th January 20xx,
Accepted 00th January 20xx

DOI: 10.1039/x0xx00000x

www.rsc.org/

Supramolecular structural transformation of *N, N'*-bis(4-pyridylmethyl)-naphthalene diimide and fluorescence water sensing

Guo-Bi Li,^{ab} Qing-Yuan Yang,^c Rong-Kai Pan,^b Sheng-Gui Liu,^b Yao-Wei Xu*^a



Scheme S1 Two conformations of the 4-pmntd

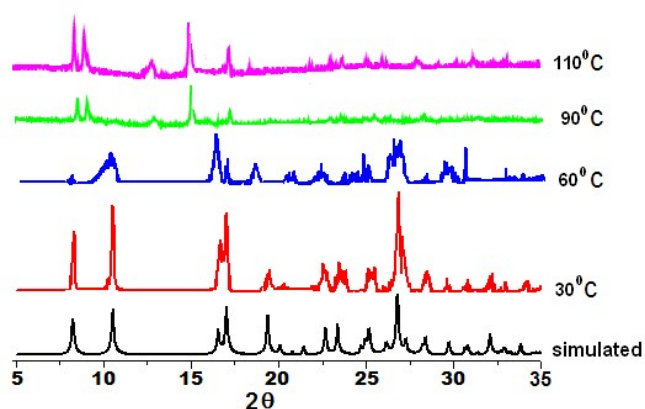


Fig. S1 Variable temperature PXRD patterns for compound 1

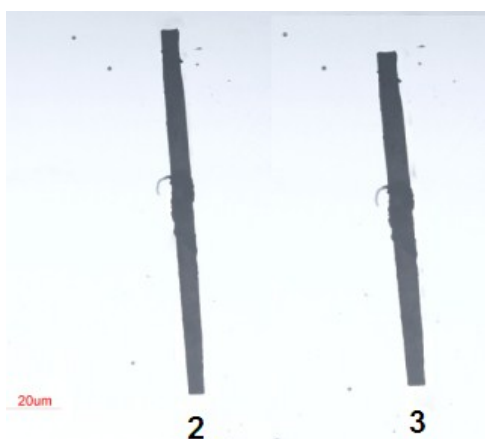


Fig. S2 A photograph of compounds 2 and 3

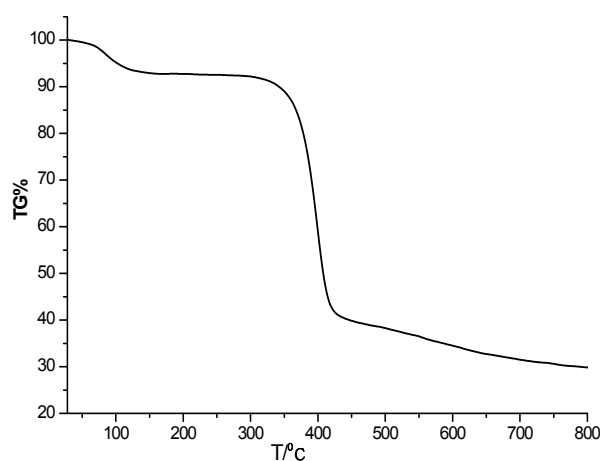


Fig. S3 TGA curve of compound 1

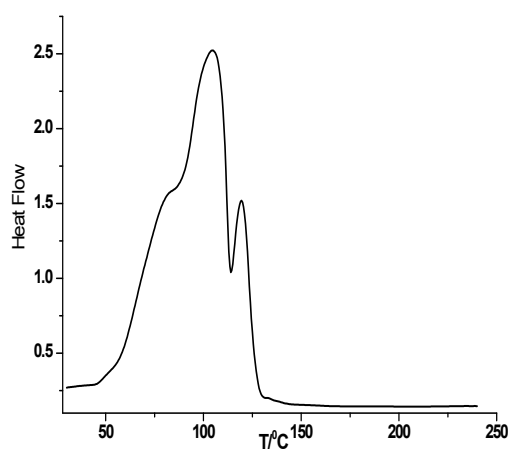


Fig. S4 DSC curve of compound 1

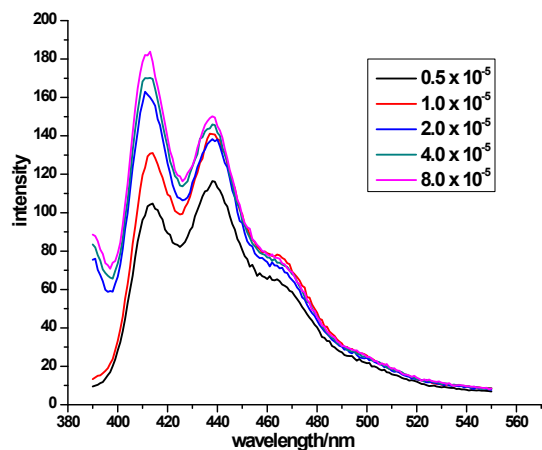


Fig. S5 Emission spectra of 4-pmntd in CHCl_3 for different concentration (excitation at 360nm)

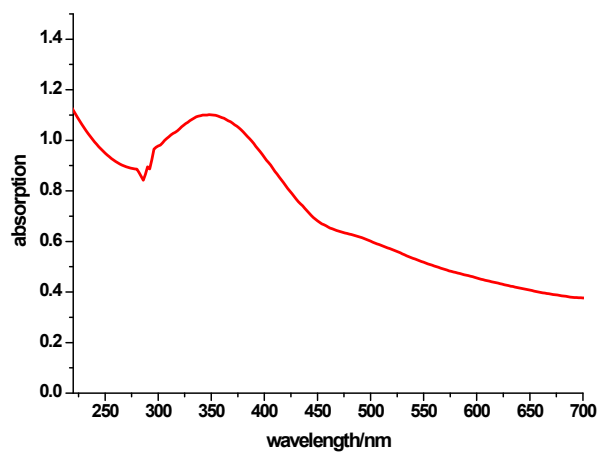


Fig. S6 UV-Vis spectrum of compound 3

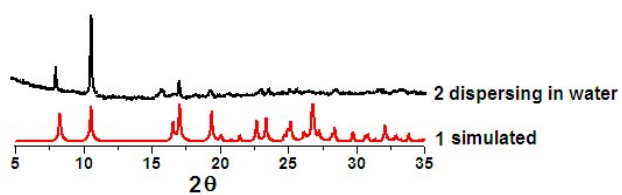


Fig. S7 The XRPD of 1 simulated and 2 dispersing in water

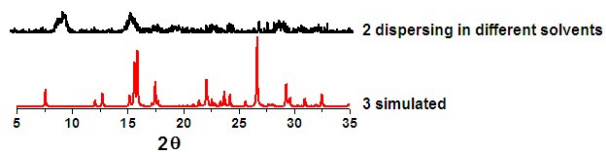


Fig. S8 The XRPD of 3 simulated and 2 dispersing in different solvents