

Dynamic Visualization of Photothermal Properties of Gold Nanocages Assemblies Using Thermoresponsive Elastin like Poly-Peptides

*Surya Cheemalapati^{a+}, Mikhail Ladano^{a+}, Bo Pang^{b,c}, Yuan Yuan^a, Piyush Koria^a, Younan Xia^{b,d}
and Anna Pyaya^{a*}*

^aIBIS Lab, Department of Chemical and Biomedical Engineering, University of South Florida,
Tampa, FL 33647, USA

^bThe Wallace H. Coulter Department of Biomedical Engineering, Georgia Institute of
Technology and Emory University, Atlanta, GA 30332, USA

^cDepartment of Biomedical Engineering, College of Engineering, Peking University, Beijing
100871, P. R. China

^dSchool of Chemistry and Biochemistry and School of Chemical and Biomolecular Engineering,
Georgia Institute of Technology, Atlanta, GA 30332, USA

+Indicates equal contributions

Email: pyayt@usf.edu

SUPPLEMENTARY INFORMATION

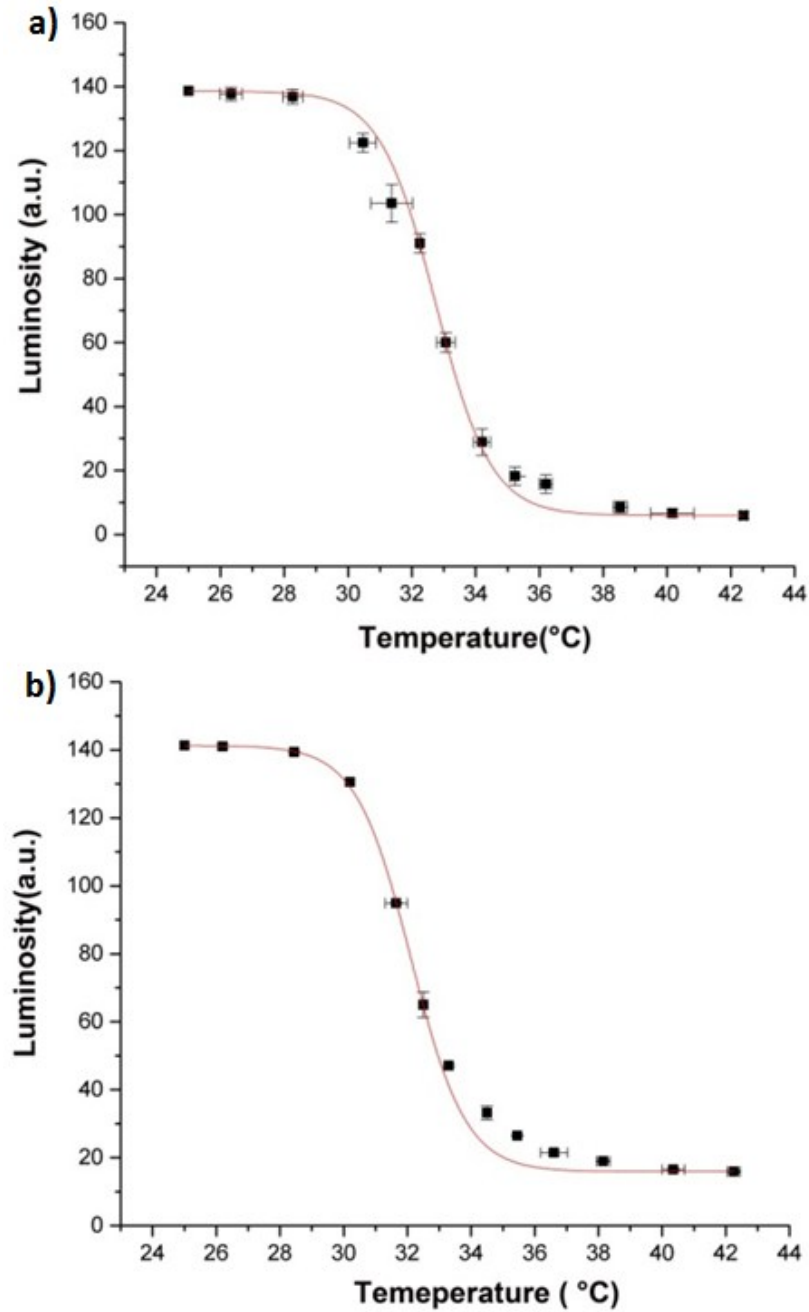


Figure S1. The calibration curves a) and b) for two different thicknesses of ELP solutions ($\sim 330 \mu\text{m}$ and $550 \mu\text{m}$). The T_i and dT used in the paper were extracted from these plots. It can be noticed that even though the minimum luminosities L_2 for these plots are different, T_i is very close, since it is a function of ELP concentration that stays constant in all the experiment.

Table S1. T_t and dT for individual thickness calibrations obtained from the Figure S1. Average T_t 32.43 and dT 0.87 were calculated using data from the table.

	L1	L2	T_t	dT
Thickness1	138.59	5.9	32.74	0.87
Thickness2	141.3	15.89	32.11	0.86
Average			32.425	0.866
Standard Deviation			0.445	0.005

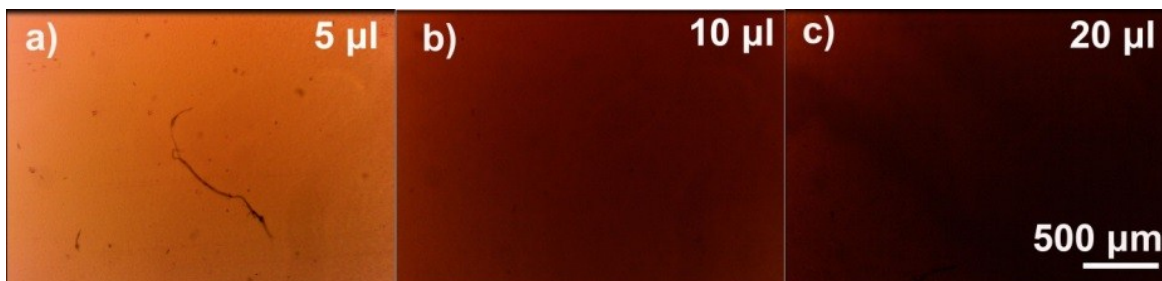


Figure S2. Three drops of ELPs solution with volumes 5 μ l, 10 μ l and 20 μ l formed layers of increasing thickness. An experiment demonstrating that the highest absorption (minimum luminosity L_2) is a function of thickness of ELPs solution. However, the T_t and dT do not depend on the thickness layer, but only are a function of concentration of ELPs.

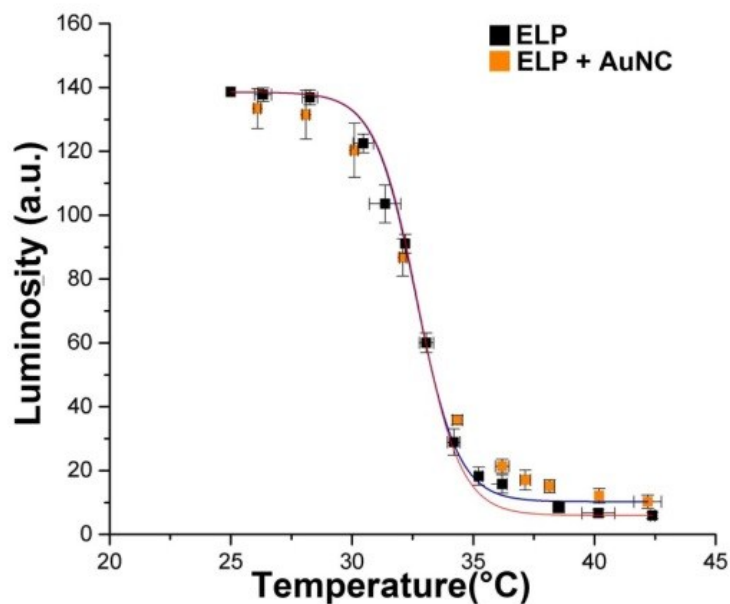


Figure S3. The transfer functions for ELPs solution and solution of ELP with added AuNC demonstrate that the ELPs properties are not influenced by the AuNC used in this study.

Table S2. The luminosity L_1 at 25 °C and L_2 at 42 °C for Figure 3. The rest of luminosity values at different temperatures were estimated using Equation (1) and plotted in Figure S4.

Figure 3			
Temperature (°C)		Luminosity (a.u.)	
Maximum	42	10.00	(L2) Minimum
	41	10.01	
	40	10.03	
	39	10.08	
	38	10.26	
	37	10.83	
	36	12.60	
	35	17.93	
	34	32.61	
	33	64.69	
	32	109.38	
	31	144.09	
	30	160.77	
	29	166.96	
	28	169.02	
	27	169.69	
	26	169.90	
Minimum	25	170.00	(L1) Maximum

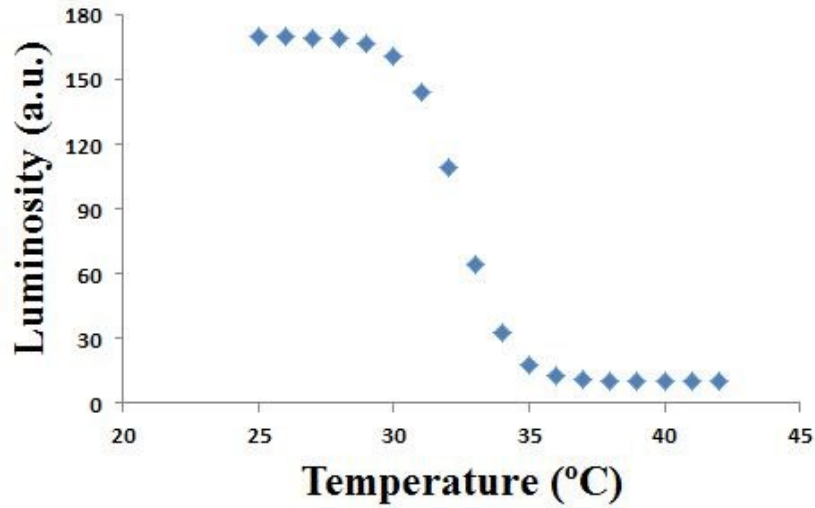


Figure S4. The luminosity-temperature transfer function for experiment in Figure 3 corresponding to the data from Table S2.

Table S3. The luminosity data L_1 at 25 °C and L_2 at 42 °C for Figure 4. The rest of luminosity values at different temperatures were estimated using Equation (1) and plotted in Figure S5.

Figure 4			
Temperature (°C)		Luminosity (a.u.)	
Maximum	42	42.0	(L ₂)Minimum
	41	42.01	
	40	42.02	
	39	42.07	
	38	42.22	
	37	42.69	
	36	44.16	
	35	48.59	
	34	60.79	
	33	87.46	
	32	124.61	
	31	153.46	
	30	167.33	
	29	172.47	
	28	174.19	
	27	174.74	
	26	174.92	
Minimum	25	175.00	(L ₁) Maximum

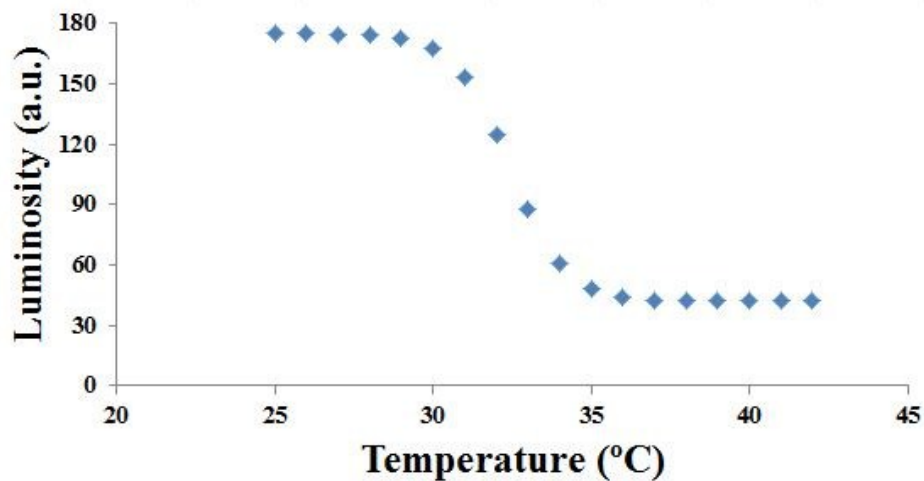


Figure S5. The luminosity-temperature transfer function for the experiment shown in Figure 4 corresponding to the data from Table S3.

Table S4. The luminosity L_1 at 25 °C and L_2 at 42 °C for Figure 5. The rest of luminosity values at different temperatures were estimated using Equation (1) and plotted in Figure S6.

Figure 5			
Temperature (°C)		Luminosity	
Maximum	42	12.50	(L ₂) Minimum
	41	12.51	
	40	12.53	
	39	12.58	
	38	12.76	
	37	13.31	
	36	15.04	
	35	20.24	
	34	34.57	
	33	65.88	
	32	109.50	
	31	143.38	
	30	159.66	
	29	165.70	
	28	167.72	
	27	168.37	
	26	168.57	
Minimum	25	168.67	(L ₁) Maximum

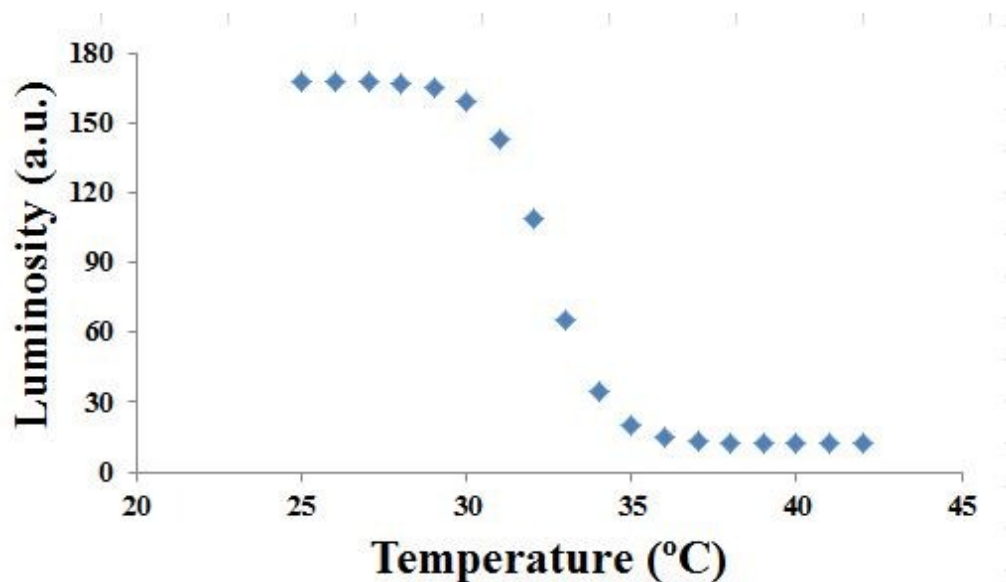


Figure S6. The luminosity-temperature transfer function for experiment in Figure 5 corresponding to the data from Table S4.

Table S5. The luminosity data L_1 at 25 °C and L_2 at 42 °C for Figure 7(I). The rest of luminosity values at different temperatures were estimated using Equation (1) and plotted in Figure S7.

Figure 7 (I)			
Temperature (°C)		Luminosity	
Maximum	42	45.00	(L ₂) Minimum
	41	45.01	
	40	45.02	
	39	45.07	
	38	45.21	
	37	45.65	
	36	47.03	
	35	51.19	
	34	62.65	
	33	87.71	
	32	122.60	
	31	149.70	
	30	162.73	
	29	167.56	
	28	169.18	
	27	169.70	
	26	169.86	
Minimum	25	169.94	(L ₁) Maximum

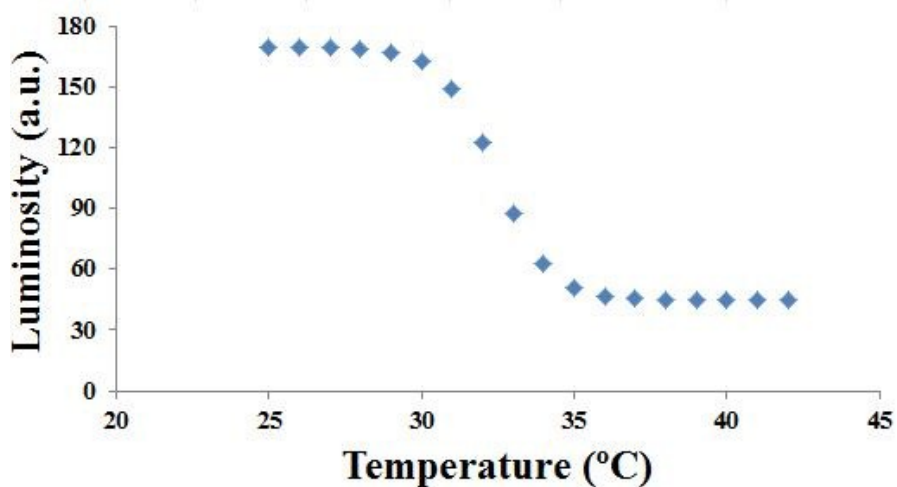


Figure S7. The luminosity-temperature transfer function for experiment in Figure 7(I) corresponding to the data from Table S5.

Table S6. The luminosity data L_1 at 25 °C and L_2 at 42 °C for Figure 7(II). The other luminosity values at different temperatures were estimated using Equation (1) and plotted in Figure S8.

Figure 7 (II)			
Temperature (°C)		Luminosity	
Maximum	42	45.00	(L ₂)Minimum
	41	45.01	
	40	45.02	
	39	45.07	
	38	45.23	
	37	45.71	
	36	47.21	
	35	51.74	
	34	64.21	
	33	91.48	
	32	129.46	
	31	158.96	
	30	173.13	
	29	178.39	
	28	180.15	
	27	180.72	
	26	180.90	
Minimum	25	180.98	(L ₁) Maximum

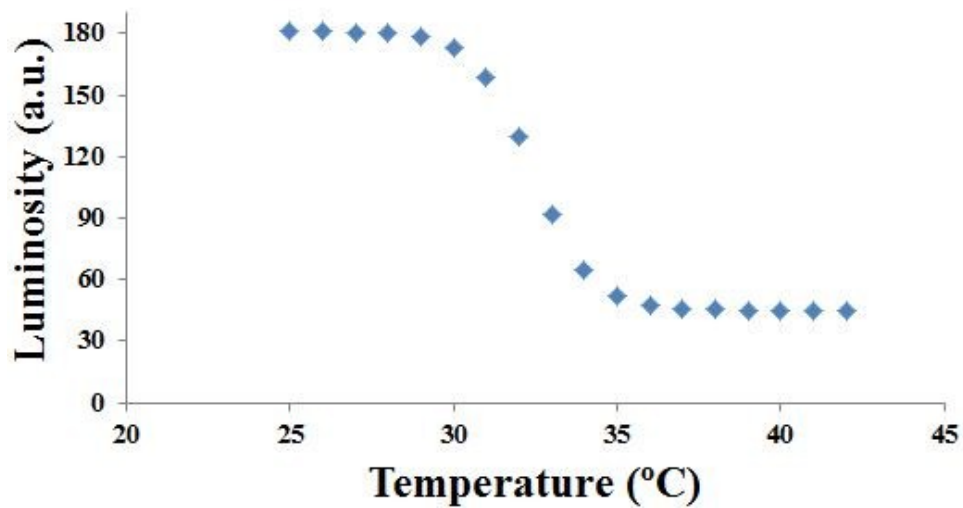


Figure S8. The luminosity-temperature transfer function for experiment in Figure 7(II) corresponding to the data from Table S6.

Table S7. The luminosity data L_1 at 25 °C and L_2 at 42 °C for Figure 7(III). The rest of luminosity values at different temperatures were estimated using Equation (1) and plotted in Figure S9.

Figure 7 (III)			
Temperature (°C)		Luminosity	
Maximum	42	45.00	(L ₂) Minimum
	41	45.01	
	40	45.02	
	39	45.07	
	38	45.22	
	37	45.69	
	36	47.16	
	35	51.59	
	34	63.79	
	33	90.46	
	32	127.61	
	31	156.46	
	30	170.33	
	29	175.47	
	28	177.19	
	27	177.74	
	26	177.92	
Minimum	25	178.00	(L ₁) Maximum

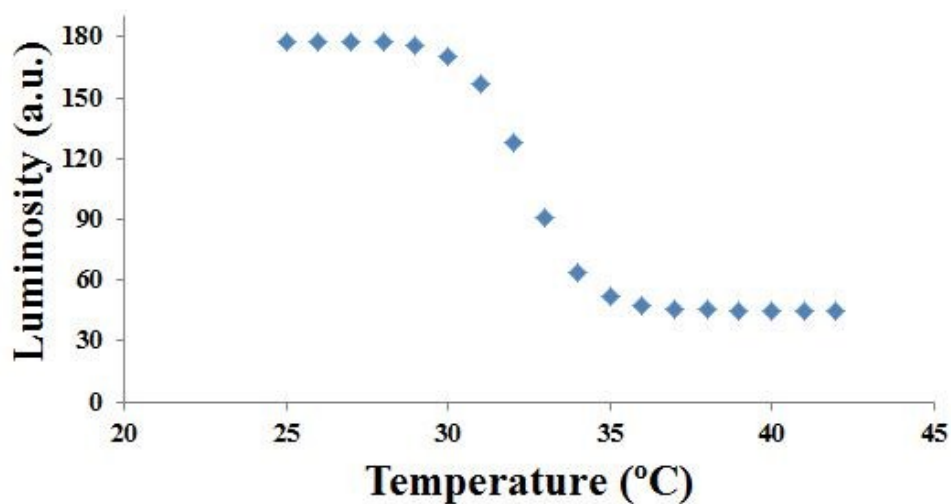


Figure S9. The luminosity-temperature transfer function for experiment in Figure 7(III) corresponding to the data from Table S7