

Supplementary Information

Precise casting of biomorphic $\text{La}_{0.9}\text{K}_{0.1}\text{CoO}_3$ catalysts derived from pinewood for diesel soot combustion

Zhaohui Liu,^a Xiaofei Wang,^a Teng Mao,^a Jianqiang Sima,^a Cairong Gong,^{a*} and
Guoliang Fan^a

^a*School of Materials Science and Engineering, Tianjin University, Tianjin 300072, P. R.
China.*

^b*State Key Laboratory of Engines, Tianjin University, Tianjin 300072, P. R.China.*

*Corresponding author. Email Address: gcr@tju.edu.cn; Lvg@tju.edu.cn

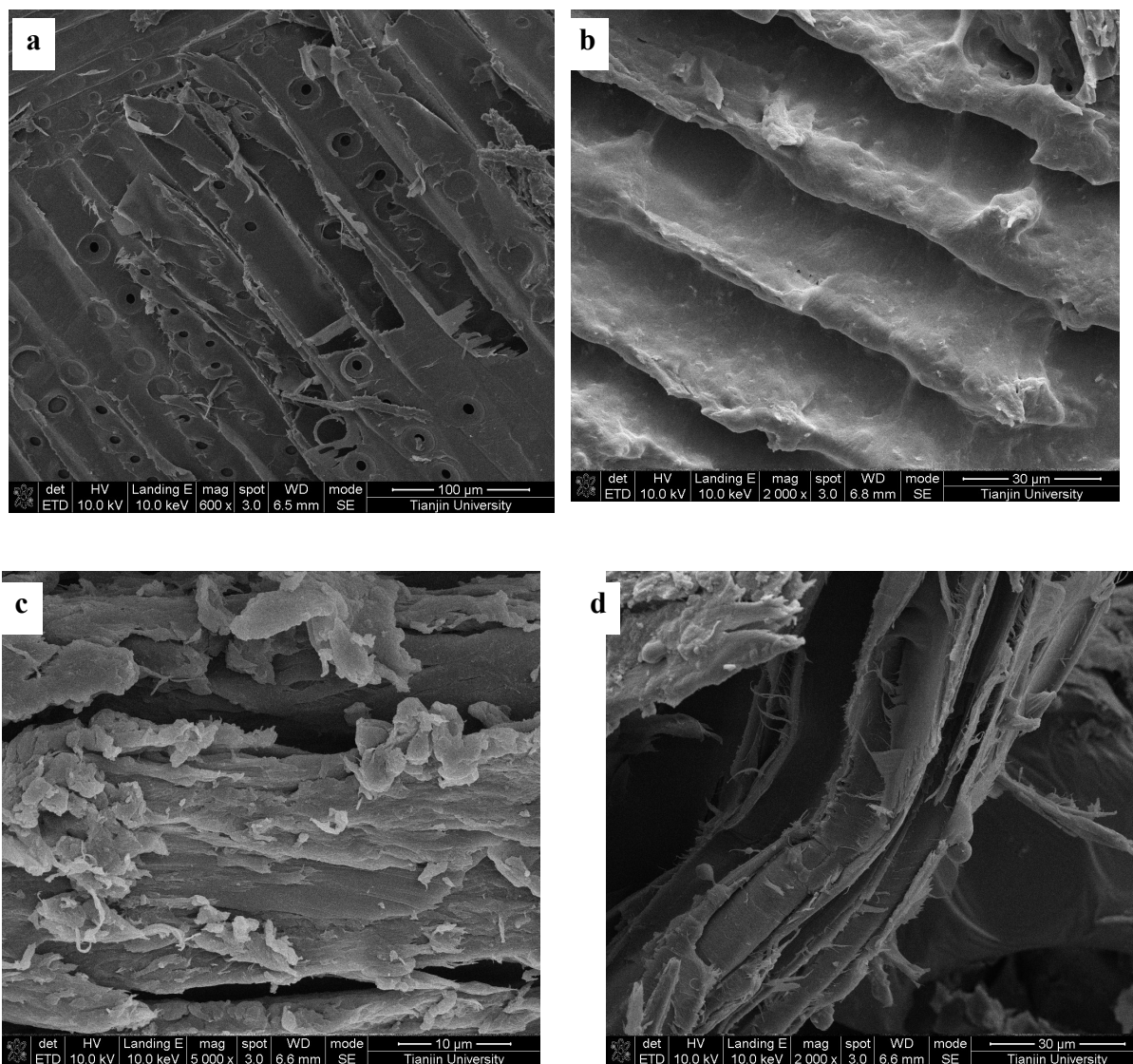


Figure. S1 The SEM images of the pinewood template: (a) original pinewood; (b) impregnated pinewood template without treatment; (c) impregnated pinewood template pre-treated with ethanol/acetone and (d) impregnated pinewood template pre-treated with 5%(w/w %) ammonia water

Figure S1. give the SEM images of the pinewood template and the samples loading $\text{La}_{0.9}\text{K}_{0.1}\text{CoO}_3$ - sol with different pre-treatment method. Figure S1(a) is the image of the SEM of the original pinewood prior to the impregnation and Figure S1(b) is the

SEM images of the corresponding impregnated specimen. The SEM images of the pre-treated pinewood template loading $\text{La}_{0.9}\text{K}_{0.1}\text{CoO}_3$ – sol are shown in Figure S1(c) (pre-treated with ethaol/acetone) and (d)(pre-treated with 5%(w/w %) ammonia water).