

Supplementary information

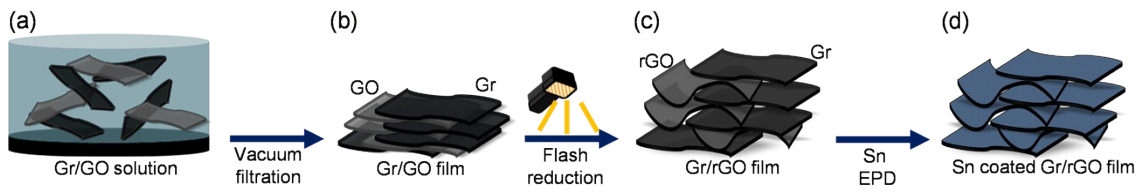
Flash-Induced Reduced Graphene Oxide as Sn Anode Hosts for High Performance Sodium Ion Batteries

Yeryung Jeon,^a Xiaogang Han,^b Kun Fu,^b Jiaqi Dai,^b Joo Hyun Kim,^a Liangbing Hu,^b Taeseup Song^{c} and Ungyu Paik^{a*}*

Y. Jeon, J. Kim, Prof. U. Paik
Department of Energy Engineering
Hanyang University
Seoul, 133-791, Republic of Korea
*E-mail: upaik@hanyang.ac.kr

X. Han, K. Fu, J. Dai, Prof. L. Hu
Department of Materials Science and Engineering
University of Maryland
College Park, Maryland 20742, USA

Prof. T. Song
School of Materials Science and Engineering
Yeungnam University
Gyeongsan, 712-749, Republic of Korea
*E-mail: tsong@yu.ac.kr



Scheme S1. Schematic illustration for the preparation of the Sn-coated RGO-graphene film.

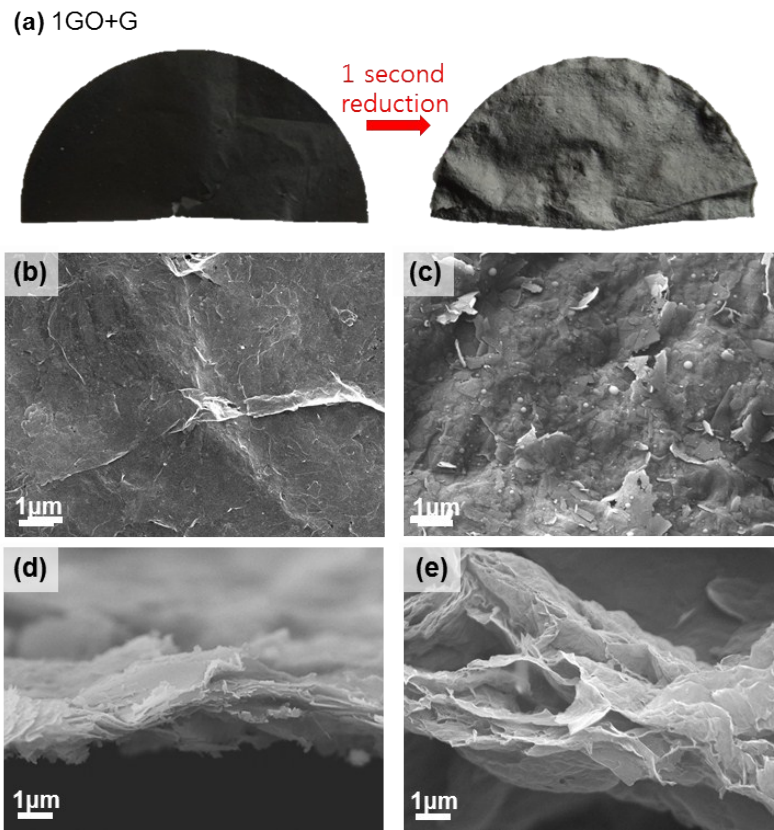


Figure S1. (a) Photographs of (1GO+G) before and after flash reduction. (b) Top view-, (d) cross sectional view-SEM images of (1GO+G) film before flash reduction. (c) Top view-, (e) cross sectional view-SEM images of (1GO+G) film after flash reduction. All scale bars indicate 1 μm .

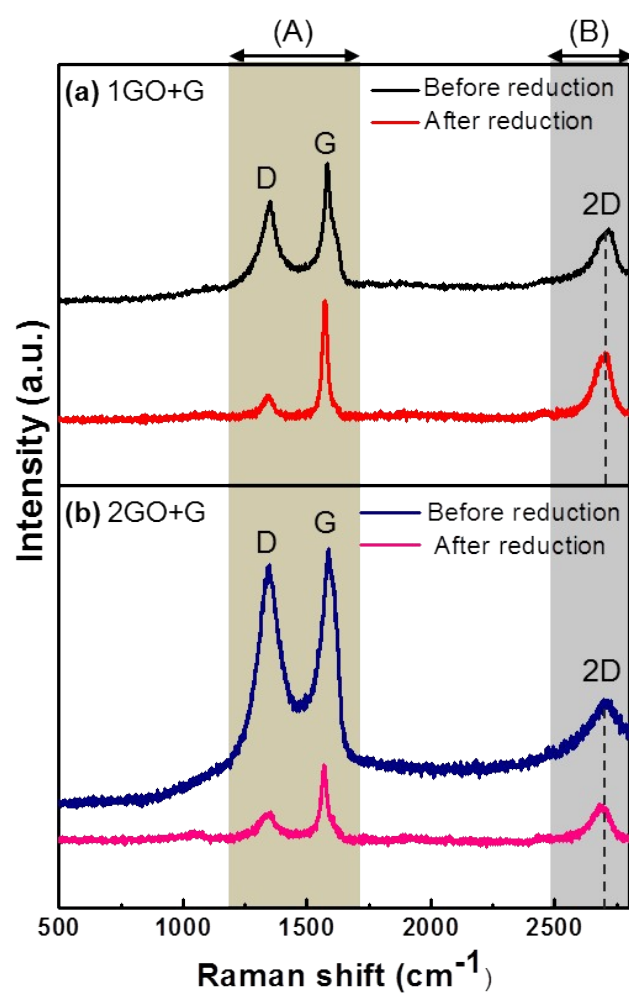


Figure S2. Raman spectra of (a) (1GO+G), (b) (2GO+G) electrodes before and after reduction.

In the region (A) and (b) involve D/G band peaks and 2D related peaks, respectively.

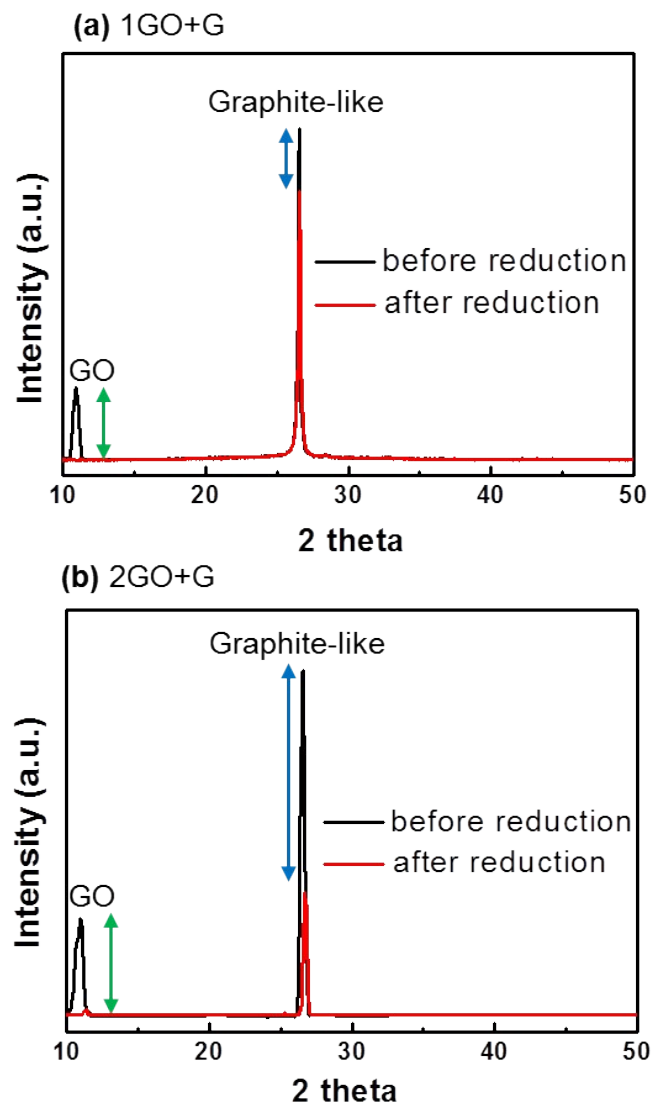


Figure S3. XRD analysis of (a) (1GO+G), (b) (2GO+G) films before and after reduction. Blue arrows indicate the graphite-like peak ($2\theta = 26.52^\circ$) differences between (n GO+G) and (n RGO+G). Green arrows indicate the GO peak ($2\theta = 10.27^\circ$) differences between (n GO+G) and (n RGO+G).

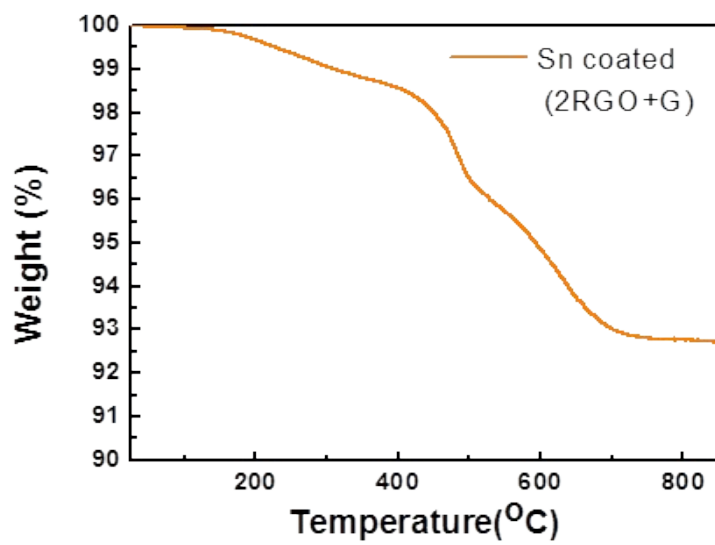


Figure S4. TGA curves of Sn-coated (2RGO+G) composite anode from room temperature to 850 °C.

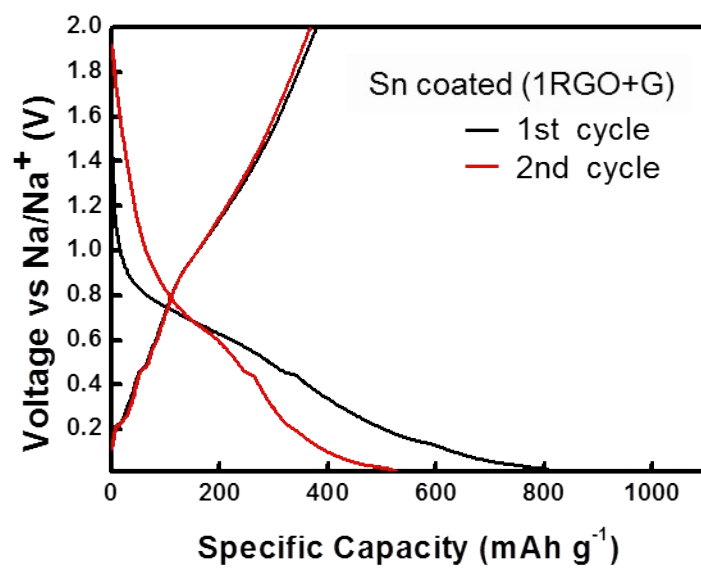


Figure S5. Voltage profiles for the 1st and 2nd cycles of Sn coated (1RGO+G) electrode at a rate of 0.5 C.

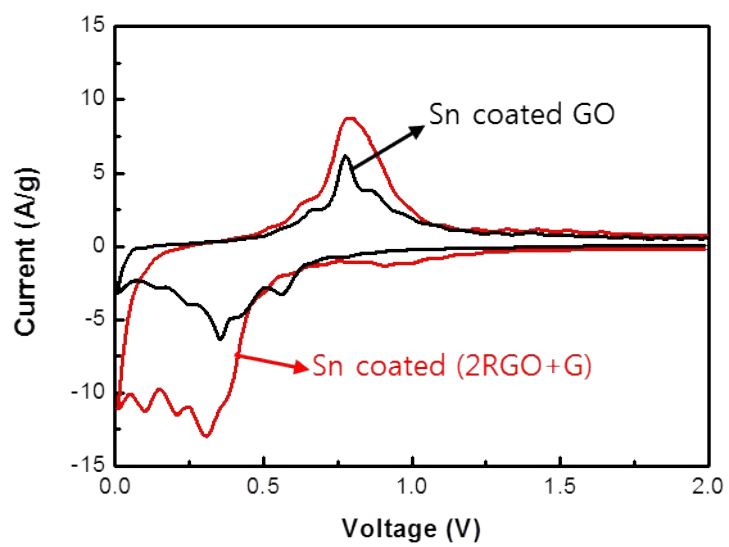


Figure S6. Cyclic voltammetry curves of Sn coated (2RGO+G) and Sn coated GO at a scanning rate of 0.1 mV s^{-1}