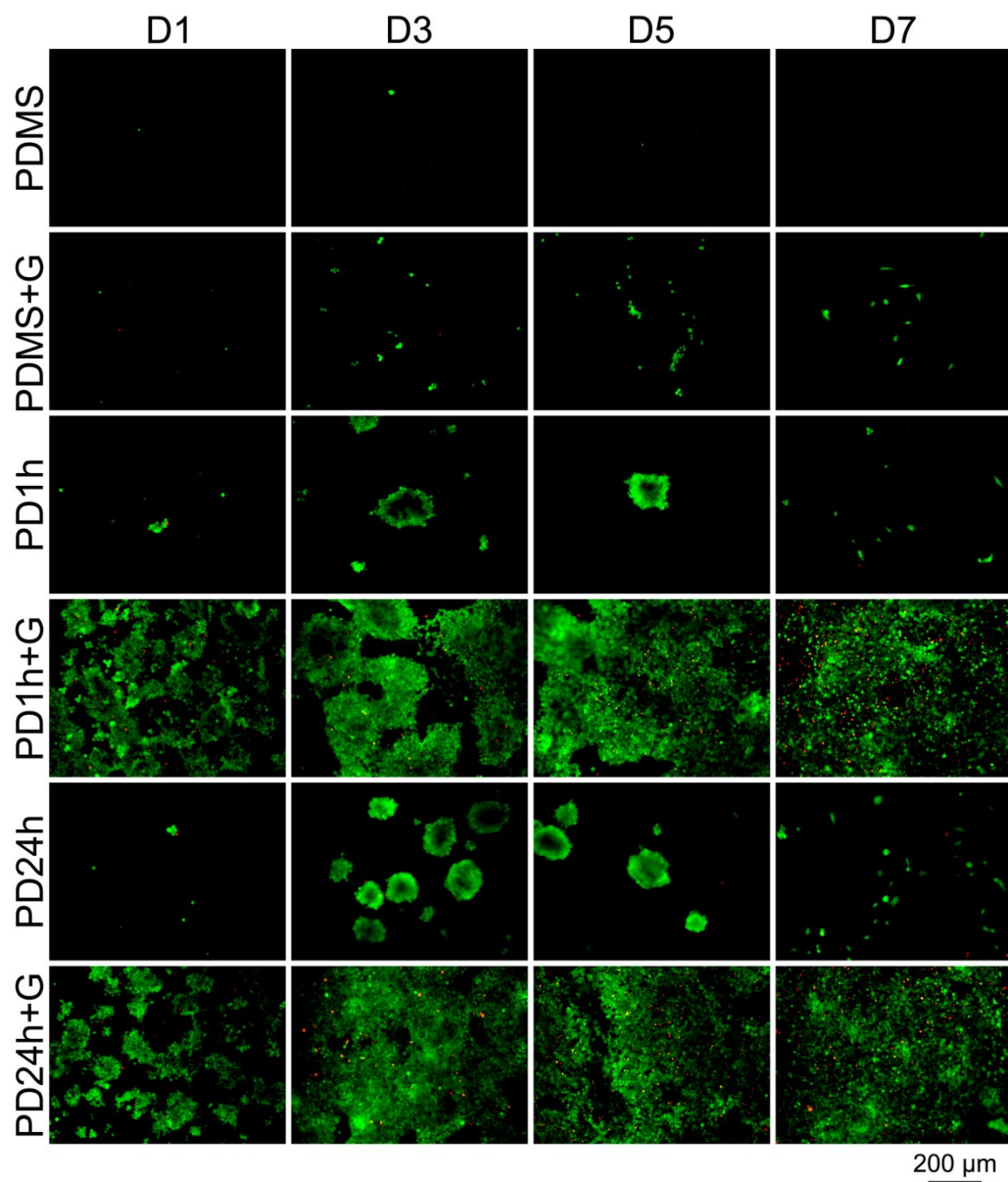


**Fig. S1** LIVE/DEAD staining of ESCs on the PDMS surface coated with PD and gelatin from day 1 to day 7. Green color indicates live cells and red color indicates dead cells.



**Fig. S2** Water contact angle (a) and Protein adsorption (b) on the PDMS surface coated with PD and gelatin. The data are presented as the mean  $\pm$  standard deviation (n=6). \* indicates  $p < 0.05$ ; \*\* indicates  $p < 0.01$ .

