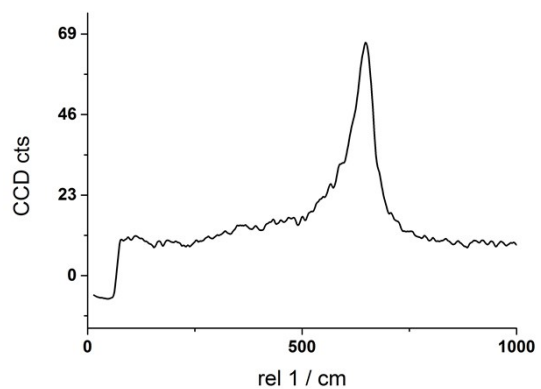


Supporting Info Figure 1: SEM images of birnessite synthesized with M^+ /alkali ion molar ratios $Li^+/Na^+/K^+$ of 0.11/0.68/0.21 isolated after 5 min



Supporting Info Figure 2: Confocal Raman line-scan spectra of birnessite with molar ratio of $Li^+/Na^+/K^+ = 0.22/0.68/0.11$.