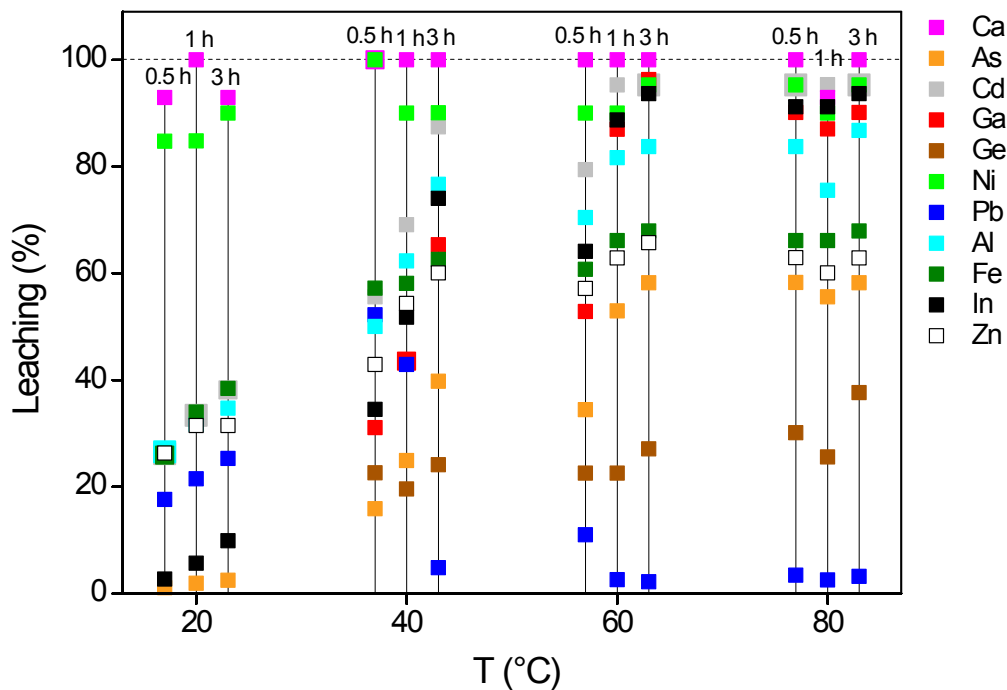


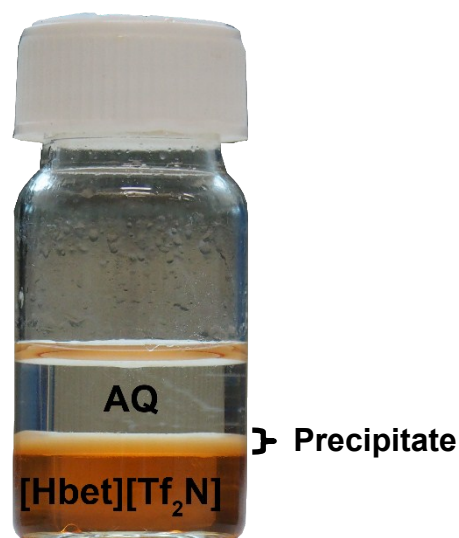
## Electronic Supplementary Information

### **Purification of crude $\text{In}(\text{OH})_3$ using the functionalized ionic liquid betainium bis(trifluoromethylsulfonyl)imide**

Clio Deferm, Jan Luyten, Harald Oosterhof, Jan Fransaer and Koen Binnemans\*



**Fig. S1** Leaching of metals (%) from crude  $\text{In}(\text{OH})_3$  in water-saturated  $[\text{Hbet}][\text{Tf}_2\text{N}]$  as a function of temperature and reaction time. The Ga and Ge contents were below the detection limit of 1 ppm at 20 °C and the Sb, Se, Sn and Te contents were below the detection limit of 1 ppm at all temperatures so that these elements have been excluded from the graph.



**Fig. S2** Filtrate obtained after filtration of the 1:0.5 wt/wt  $[\text{Hbet}][\text{Tf}_2\text{N}]-\text{H}_2\text{O}$  mixture after leaching of the crude  $\text{In}(\text{OH})_3$  for 1 h at 80 °C. Phase separation of the aqueous phase and the ionic liquid phase occurred with precipitate formation at the interphase after cooling the filtrate to room temperature.

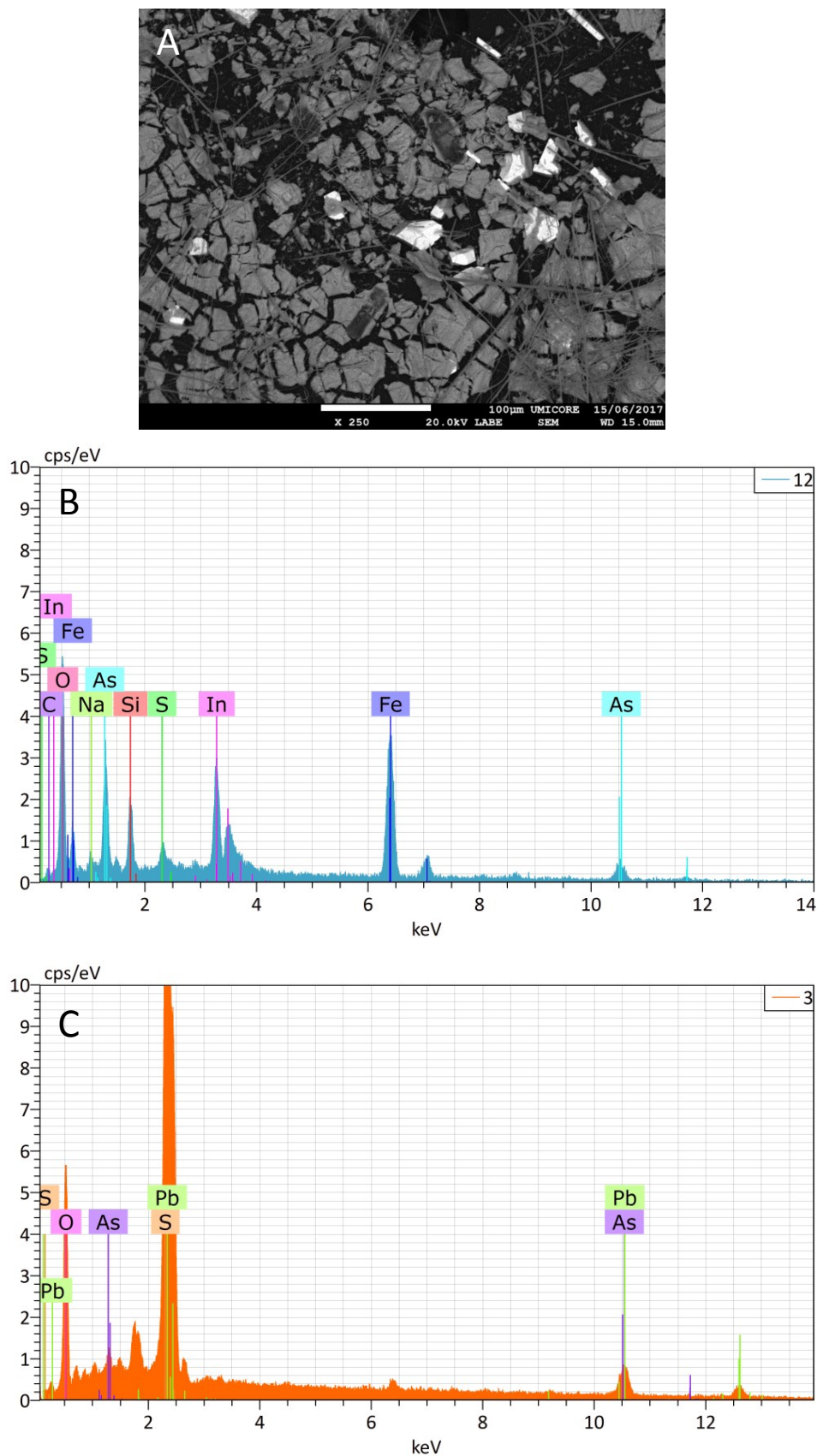
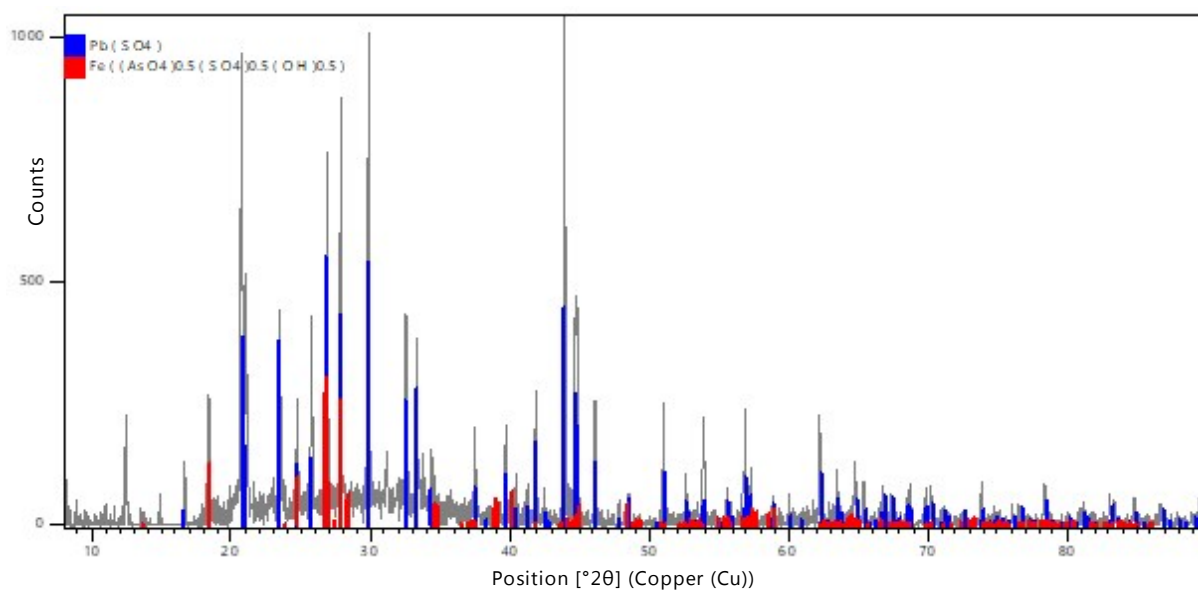
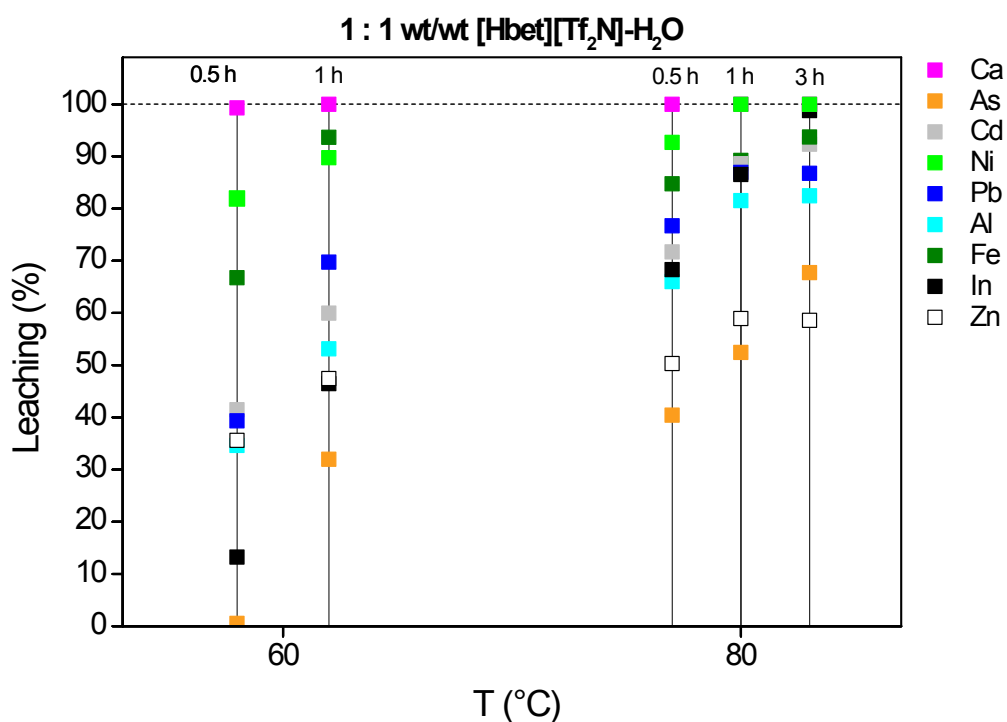


Fig. S3 SEM picture (A) and corresponding EDS spectra of the grey (B) and white particles (C) of the precipitate formed at the interphase after phase separation due to cooling of the filtrate obtained after filtration of the 1:0.5 wt/wt [Hbet][Tf<sub>2</sub>N]-H<sub>2</sub>O mixture after leaching of the crude In(OH)<sub>3</sub> for 1 h at 80 °C.



**Fig. S4** XRD of the precipitate formed at the interphase after phase separation due to cooling of the filtrate obtained after filtration of the 1:0.5 wt/wt [Hbet][Tf<sub>2</sub>N]–H<sub>2</sub>O mixture after leaching of the crude In(OH)<sub>3</sub> for 1 h at 80 °C.



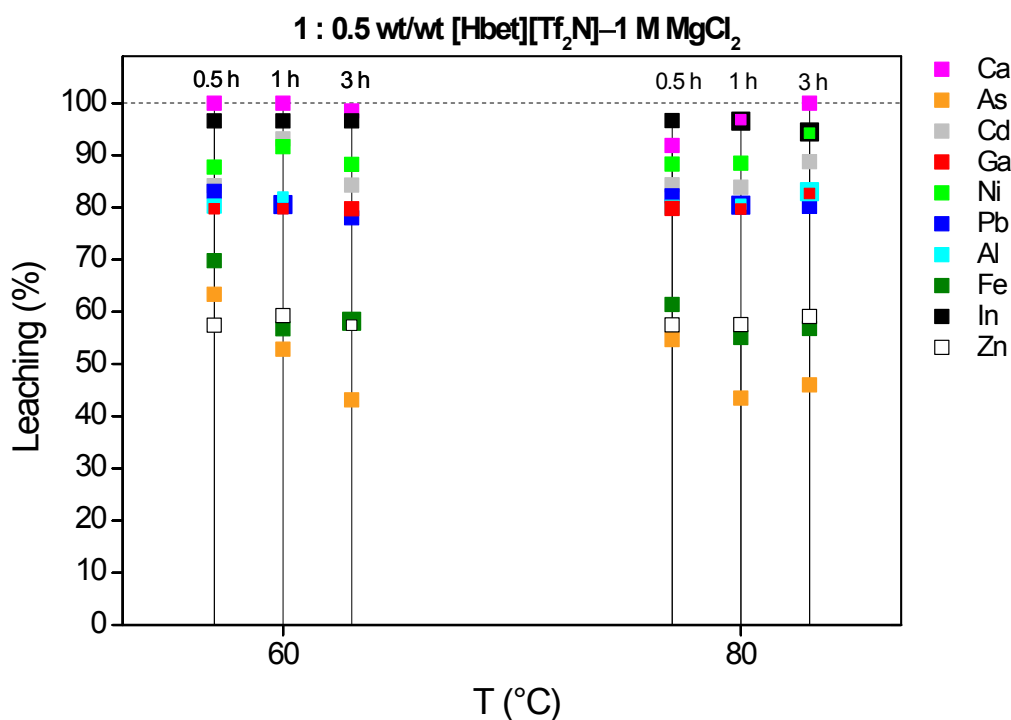
**Fig. S5** Leaching of metals (%) from crude In(OH)<sub>3</sub> in a 1:1 wt/wt mixture of [Hbet][Tf<sub>2</sub>N]–H<sub>2</sub>O as a function of temperature and reaction time. The concentrations of Ga, Ge, Sb, Se, Sn and Te were below the detection limit (<1 ppm) so these elements have been excluded from the graph.

**Table S1** Percentage leaching (%L) and corresponding standard deviation (s) of metals from crude In(OH)<sub>3</sub> in a 1:1 wt/wt mixture of [Hbet][Tf<sub>2</sub>N]–H<sub>2</sub>O as a function of temperature and reaction time.

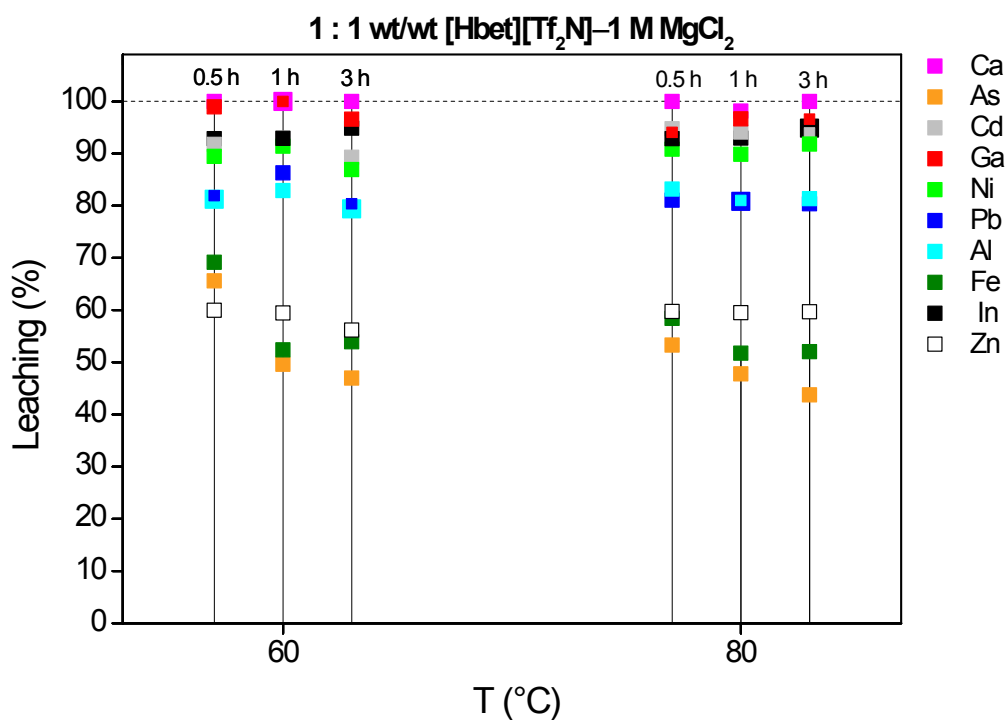
Element	60 °C				80 °C					
	30 min		1 h		30 min		1 h		3 h	
	%E	s	%E	s	%E	s	%E	s	%E	s
As	0.51	0	32	10	40	3	53	5	68	4
Cd	41	1	60	6	72	6	89	10	92	6
Ni	82	3	90	9	93	13	100	6	100	7
Pb	39	2	70	4	77	6	87	9	87	5
Al	34	1	53	3	66	1	82	3	83	7
Ca	99	5	100	0	100	0	100	21	100	0
Fe	67	3	94	1	85	1	89	7	93	1
In	13	3	47	8	68	1	87	4	99	4
Zn	36	0	47	5	50	4	59	9	59	4

**Table S2** Distribution ratio (*D*) and corresponding standard deviation (s) of metals from crude In(OH)<sub>3</sub> in a 1:1 wt/wt mixture of [Hbet][Tf<sub>2</sub>N]–H<sub>2</sub>O as a function of temperature and reaction time.

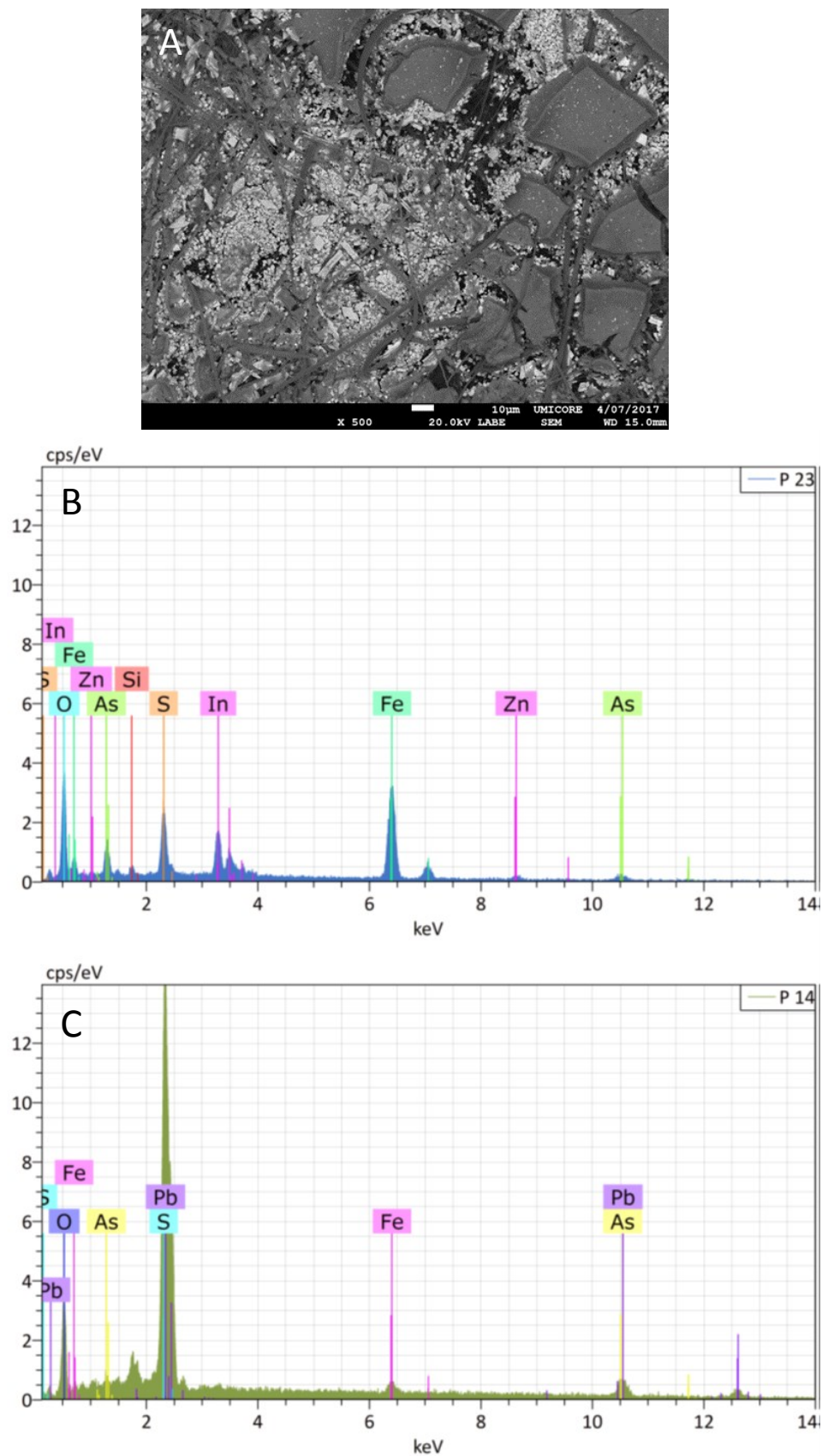
Element	60 °C				80 °C					
	30 min		1 h		30 min		1 h		3 h	
	<i>D</i>	s	<i>D</i>	s	<i>D</i>	s	<i>D</i>	s	<i>D</i>	s
As	1.3	0	1.8	0.3	1.9	0	2.4	0.3	3.3	0.2
Cd	0.20	0.03	0.16	0.01	0.19	0.03	0.13	0.05	0.13	0.03
Ni	0.20	0.06	0.14	0	0.14	0.01	0.11	0.02	0.12	0.04
Pb	2.0	0.1	1.7	0.1	1.5	0.1	1.3	0	1.3	0.1
Al	0.14	0.01	0.09	0.02	0.092	0.023	0.061	0.008	0.050	0.008
Ca	0.23	0.01	0.22	0	0.19	0	0.16	0.03	0.18	0
Fe	19	10	42	8	46	8	42	9	39	8
In	24	15	29	4	39	16	32	11	28	5
Zn	0.12	0	0.11	0	0.098	0.003	0.079	0.003	0.073	0.006



**Fig. S6** Leaching of metals (%) from crude  $\text{In}(\text{OH})_3$  in a 1:0.5 wt/wt mixture of  $[\text{Hbet}][\text{Tf}_2\text{N}]-1 \text{ M MgCl}_2$  as a function of temperature and reaction time. The concentrations of Ge, Sb, Se, Sn and Te were below the detection limit (<1 ppm) so these elements have been excluded from the graph.



**Fig. S7** Leaching of metals (%) from crude  $\text{In}(\text{OH})_3$  in a 1:1 wt/wt mixture of  $[\text{Hbet}][\text{Tf}_2\text{N}]-1 \text{ M MgCl}_2$  as a function of temperature and reaction time. The concentrations of Ge, Sb, Se, Sn and Te were below the detection limit (<1 ppm) so these elements have been excluded from the graph.



**Fig. S8** SEM picture (A) and corresponding EDS spectra of the grey (B) and white particles (C) of the precipitate formed after stripping the loaded ionic liquid phase with 1.5 N H<sub>2</sub>SO<sub>4</sub>. The loaded ionic liquid phase was obtained after leaching crude In(OH)<sub>3</sub> in the 1:1 wt/wt [Hbet][Tf<sub>2</sub>N]-H<sub>2</sub>O mixture for 3 h at 80 °C.