

Supporting Information

An Ampyrone based azo dye as pH-responsive and chemo-reversible colorimetric fluorescent probe for Al³⁺ in semi-aqueous medium: Implication towards logic gate analysis

Gaurav Bartwal^a, Komal Aggarwal^a and Jitender M. Khurana^{a,*}

^a*Department of Chemistry, University of Delhi, Delhi-110007, India*

**Corresponding author. Tel.: +91 11 27667772; fax: +91 11 27667624*

E-mail addresses: jmkhurana1@yahoo.co.in

List of Supporting Information

Figures	List	Page
Figure S1	Mass spectra of 1 -Al ³⁺ Complex	3
Figure S2	¹ H-NMR spectrum (400 MHz, DMSO-d ₆) of 1 in presence of aluminium (5 eq.)	4
Figure S3	¹³ C NMR spectrum (100 MHz, DMSO-d ₆) of 1 in presence of acid	5
Figure S4	¹ H-NMR spectrum (400 MHz, DMSO-d ₆) of 1	6
Figure S5	¹³ C-NMR spectrum (100 MHz, DMSO-d ₆) of 1	7
Figure S6	IR spectrum of 1	8
Figure S7	HR-MS spectrum of 1	9

Figure S1: Mass spectra of 1-Al³⁺ Complex

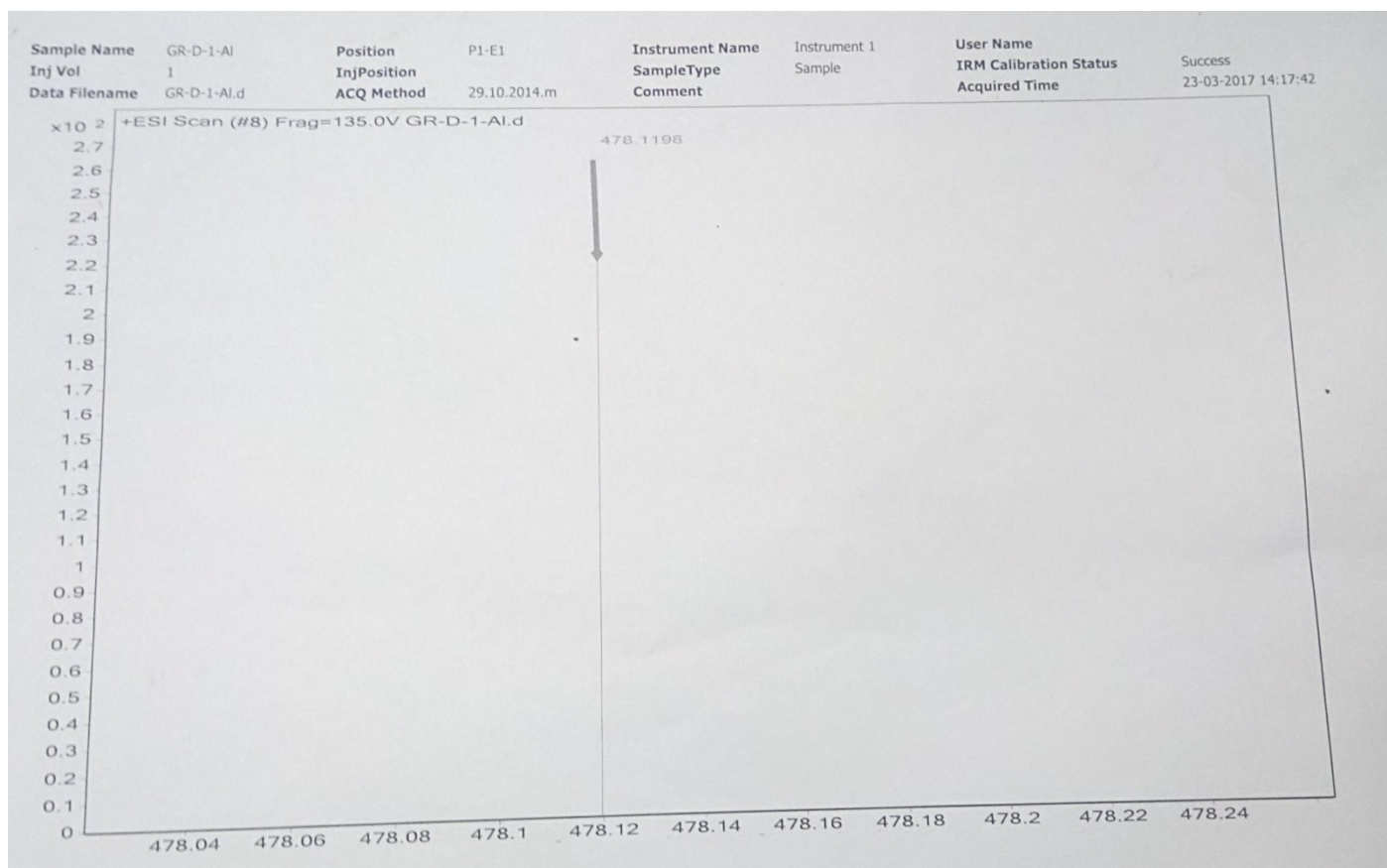


Figure S2: ^1H NMR spectrum (400 MHz, DMSO- d_6) of **1** in presence of Aluminium (5 eq.)

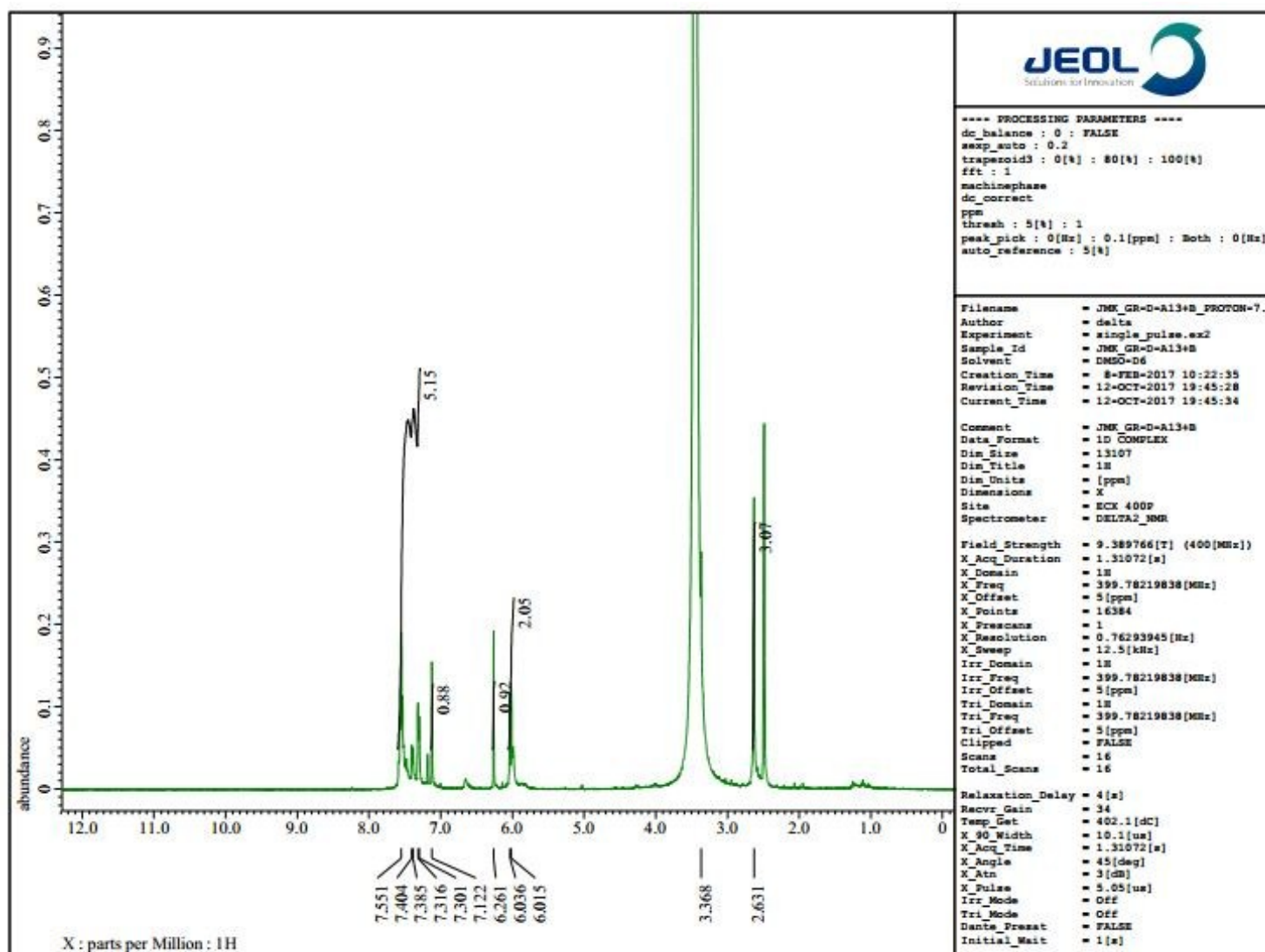


Figure S3: ^{13}C NMR spectrum (100 MHz, DMSO- d_6) of **1** in presence of acid

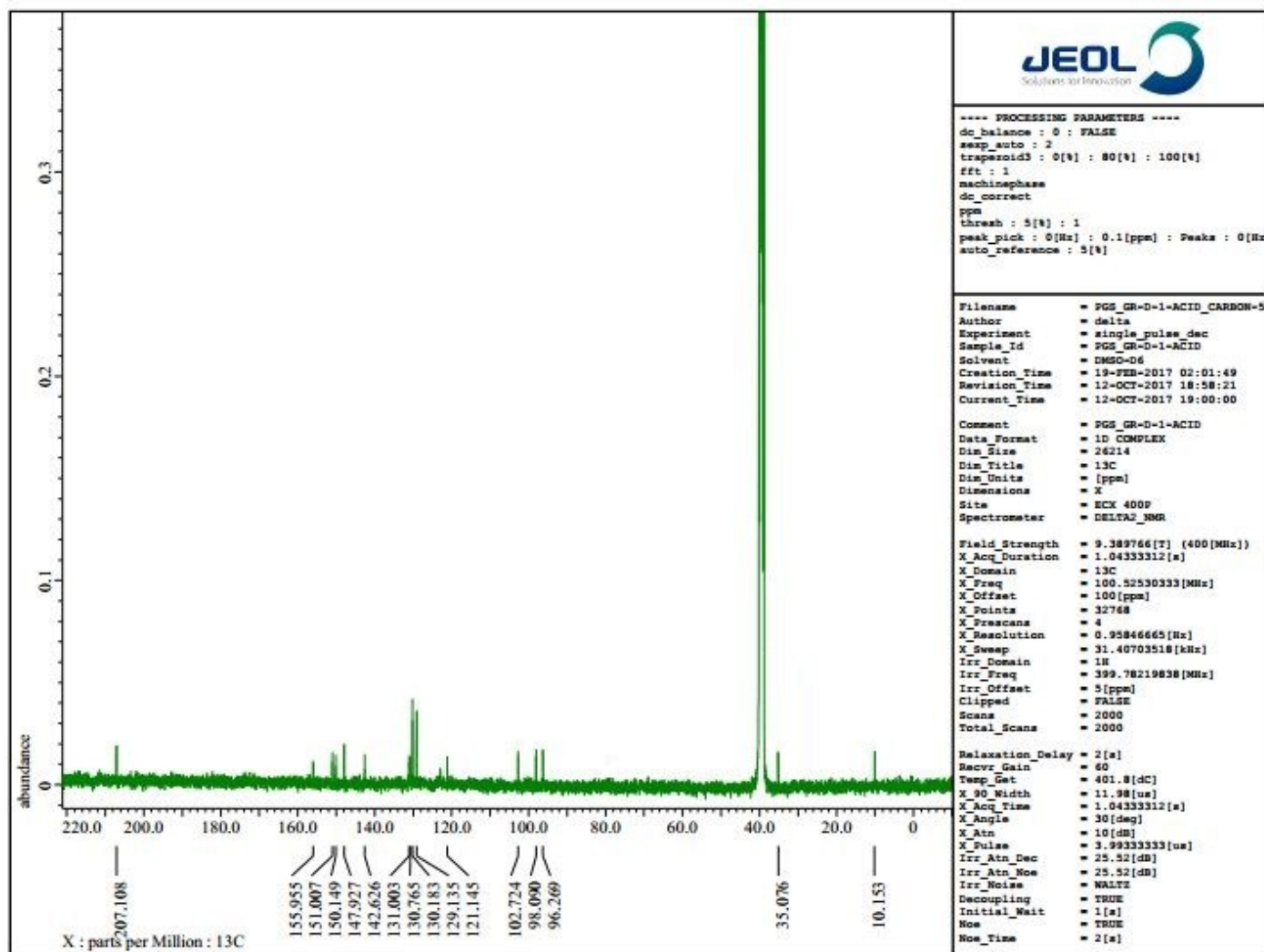


Figure S4: ^1H -NMR spectrum (400 MHz, DMSO- d_6) of **1**

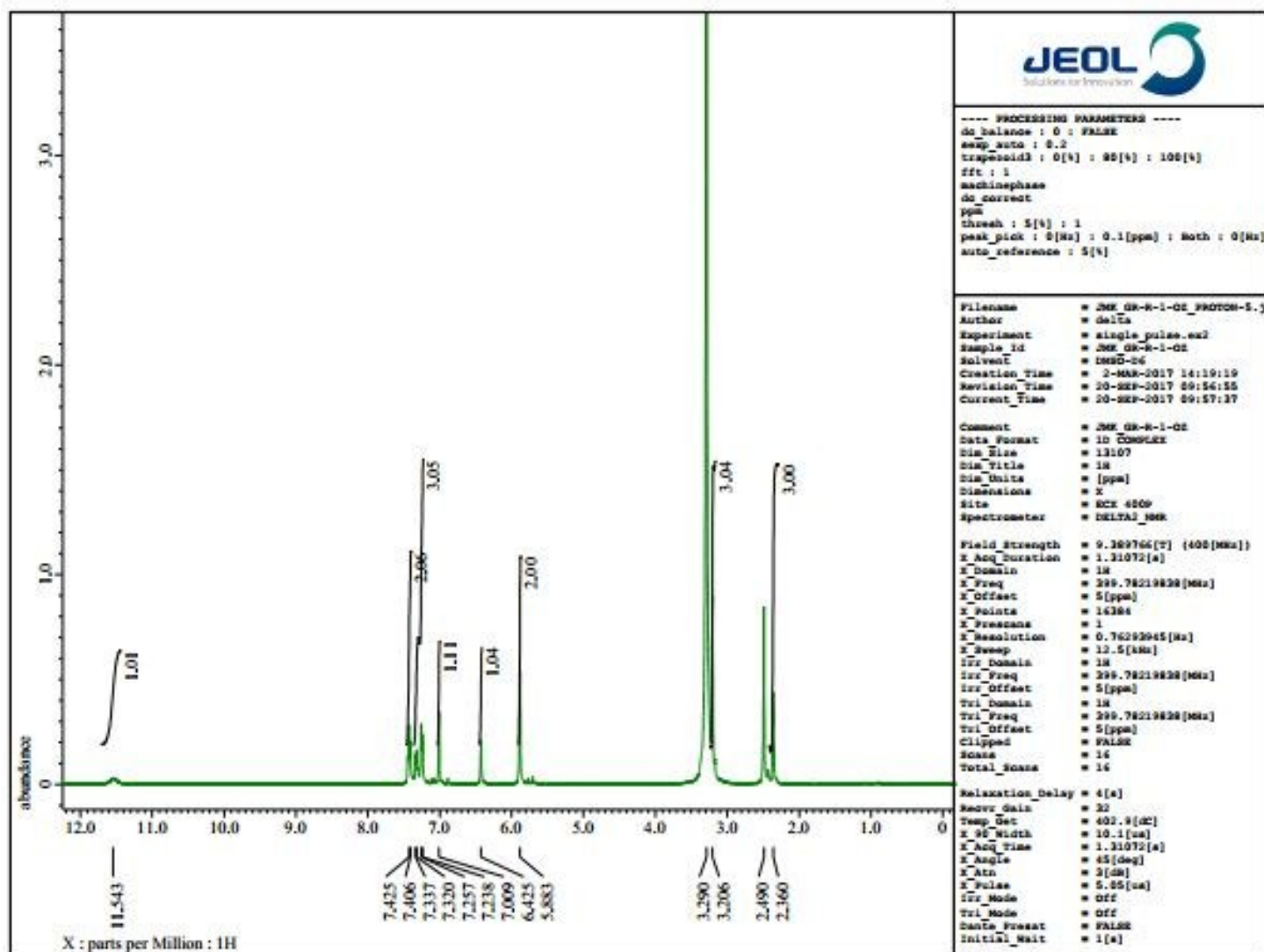


Figure S5: ^{13}C -NMR spectrum (100 MHz, DMSO- d_6) of 1

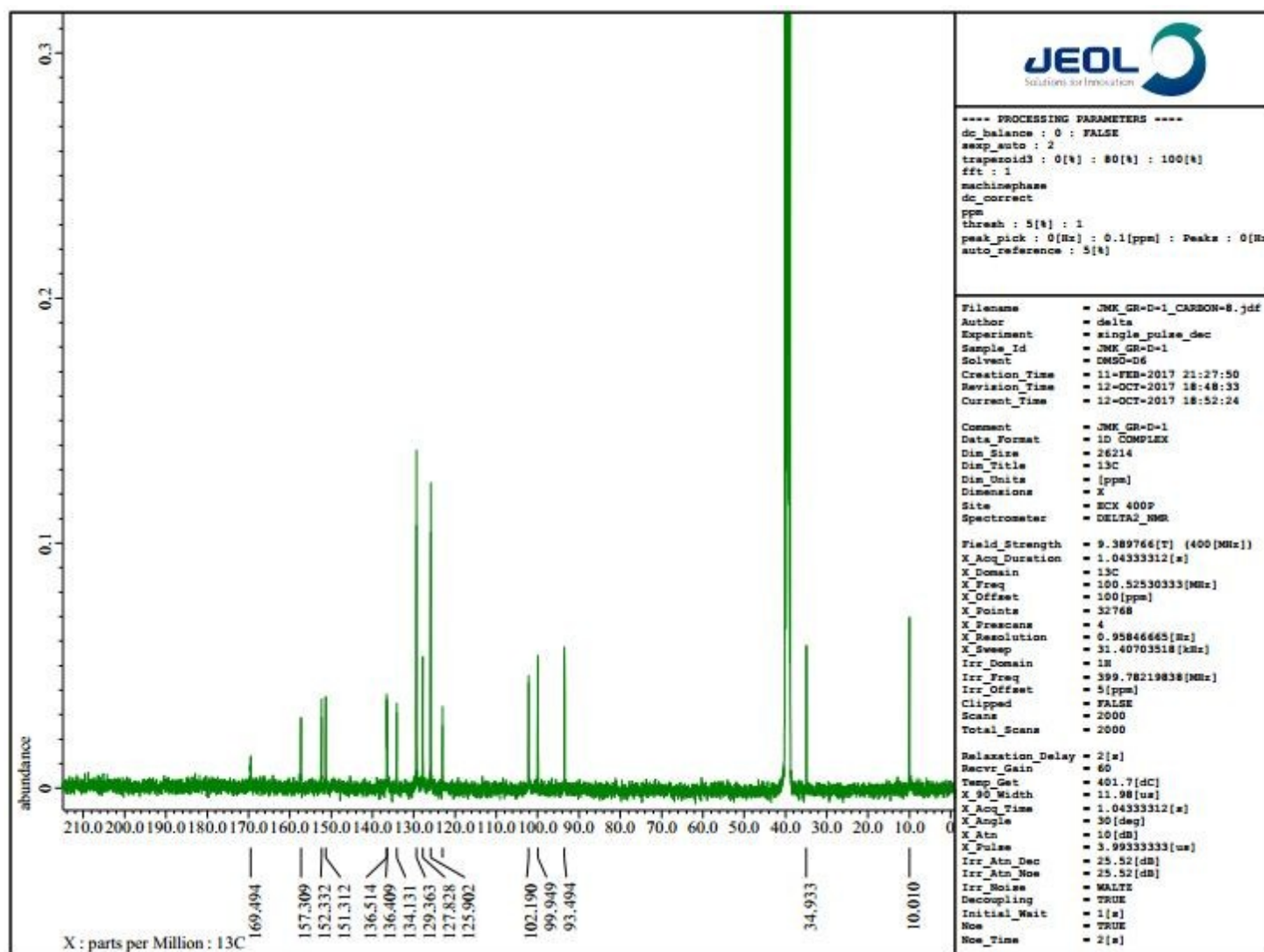


Figure S6: IR spectrum of **1**

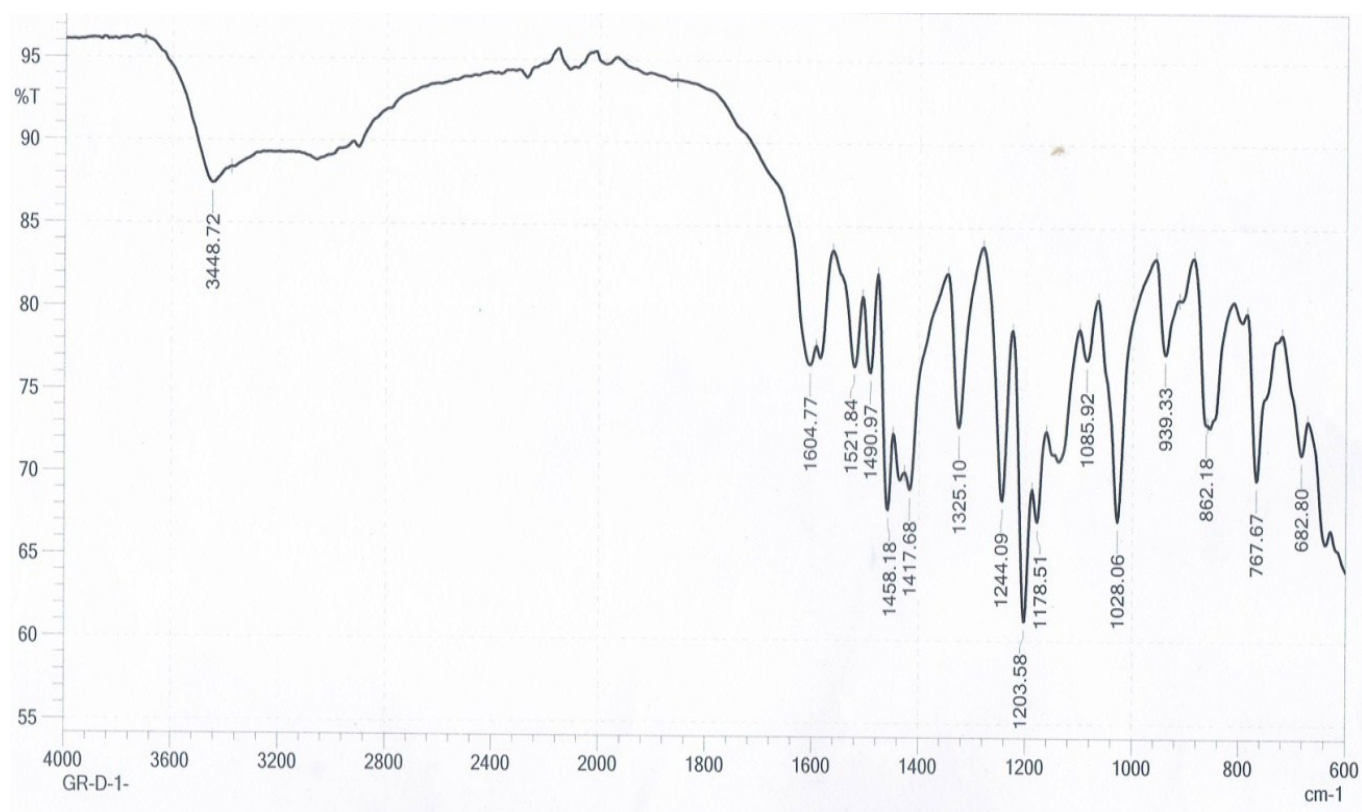
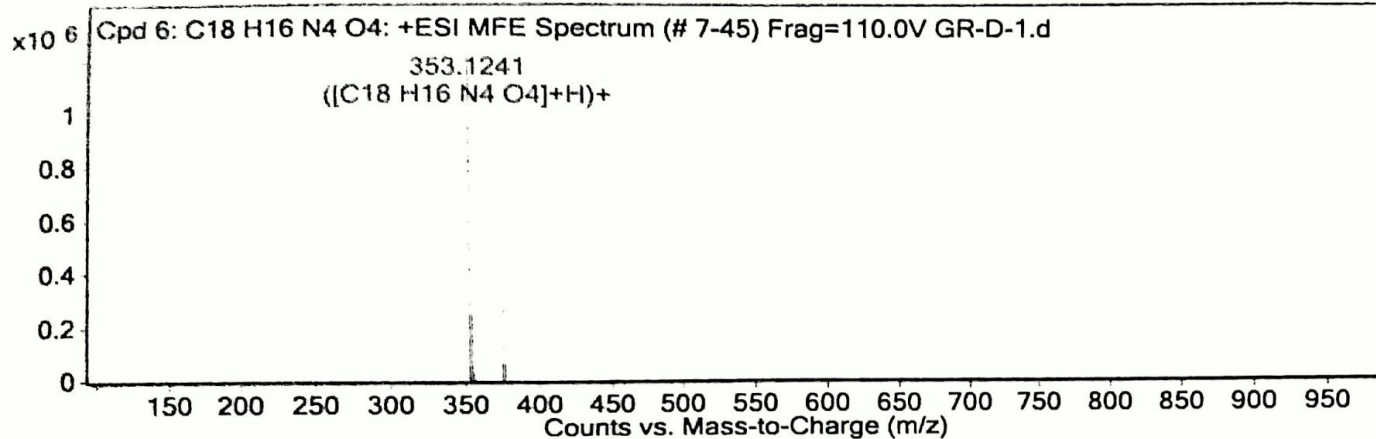


Figure S7: HR-MS spectrum of 1

Compound Label	<i>m/z</i>	RT	Algorithm	Mass
Cpd 6: C18 H16 N4 O4	353.1241	11	Find by Molecular Feature	352.1168

MFE MS Spectrum



MFE MS Zoomed Spectrum

