

Supporting information for

Solvent directed Selective and sensitive Fluorescent detection of target ions using a coumarin-pyridine probe†

Yiting Xie[#], Wenjing Cheng[#], Bing Jin, Chaogen Liang, Yubin Ding* and Weihua Zhang*

Jiangsu Key Laboratory of Pesticide Science, Department of Chemistry, College of Sciences,
Nanjing Agricultural University, Nanjing, Jiangsu 210095, China. E-mail: ybding@njau.edu.cn;
njzhangwh@126.com

Figures

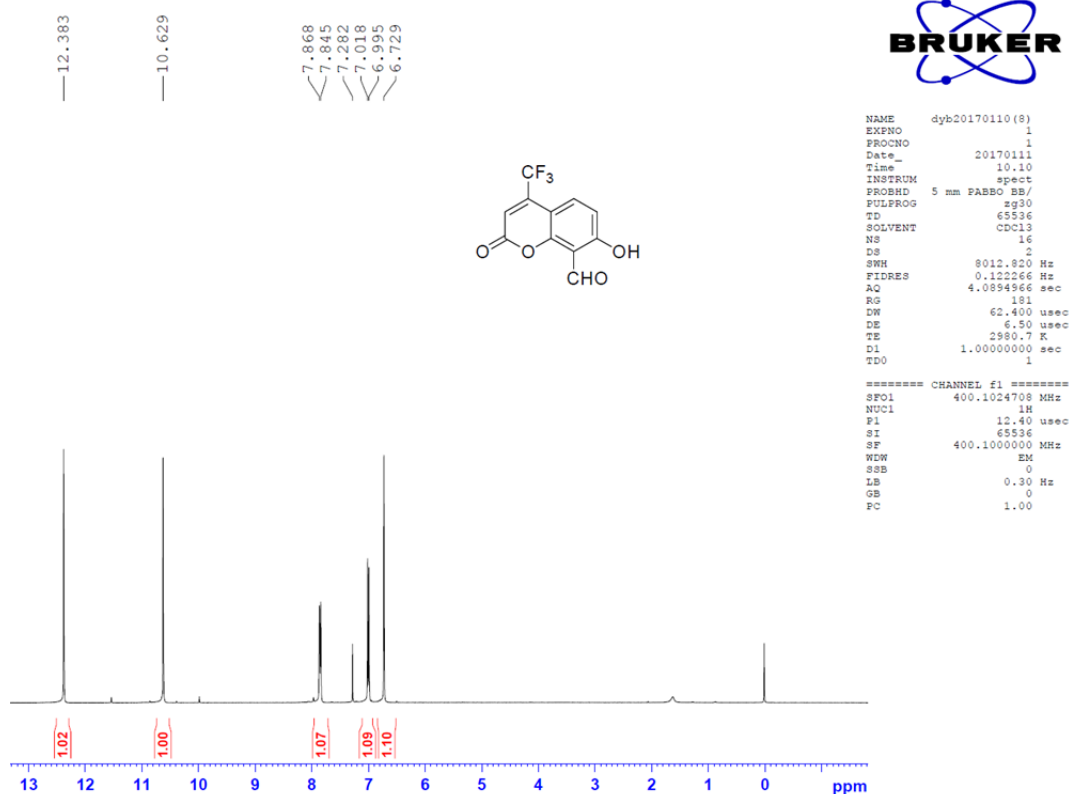


Fig. S1 ¹H NMR of P2 in CDCl₃.

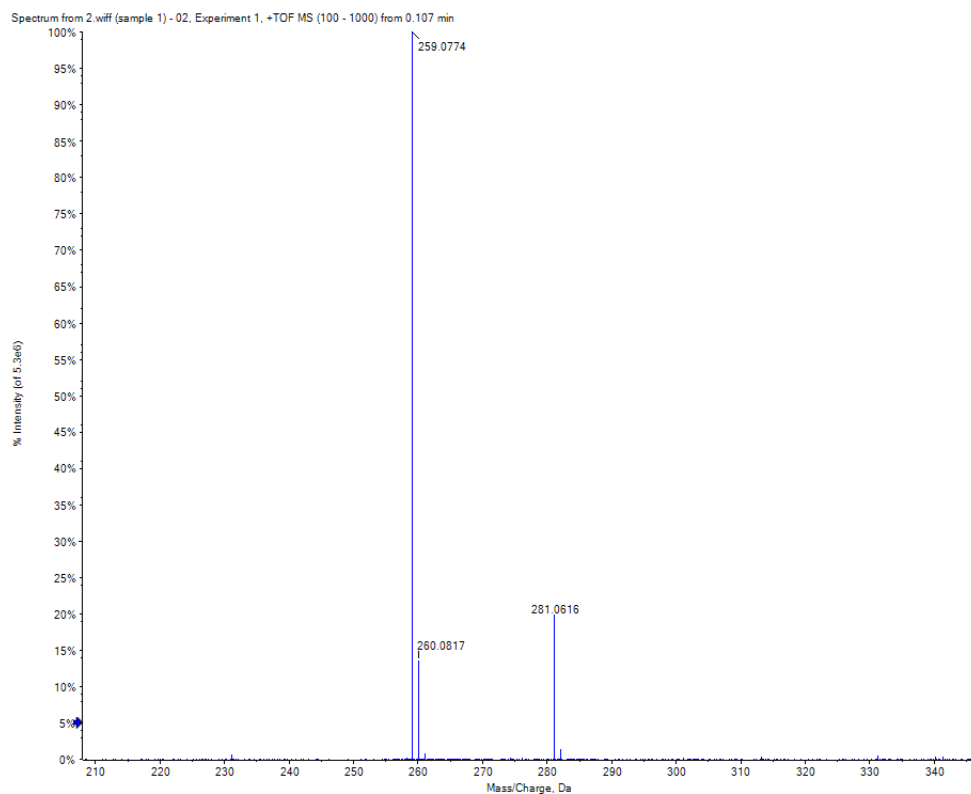


Fig. S2 HRMS of P2.

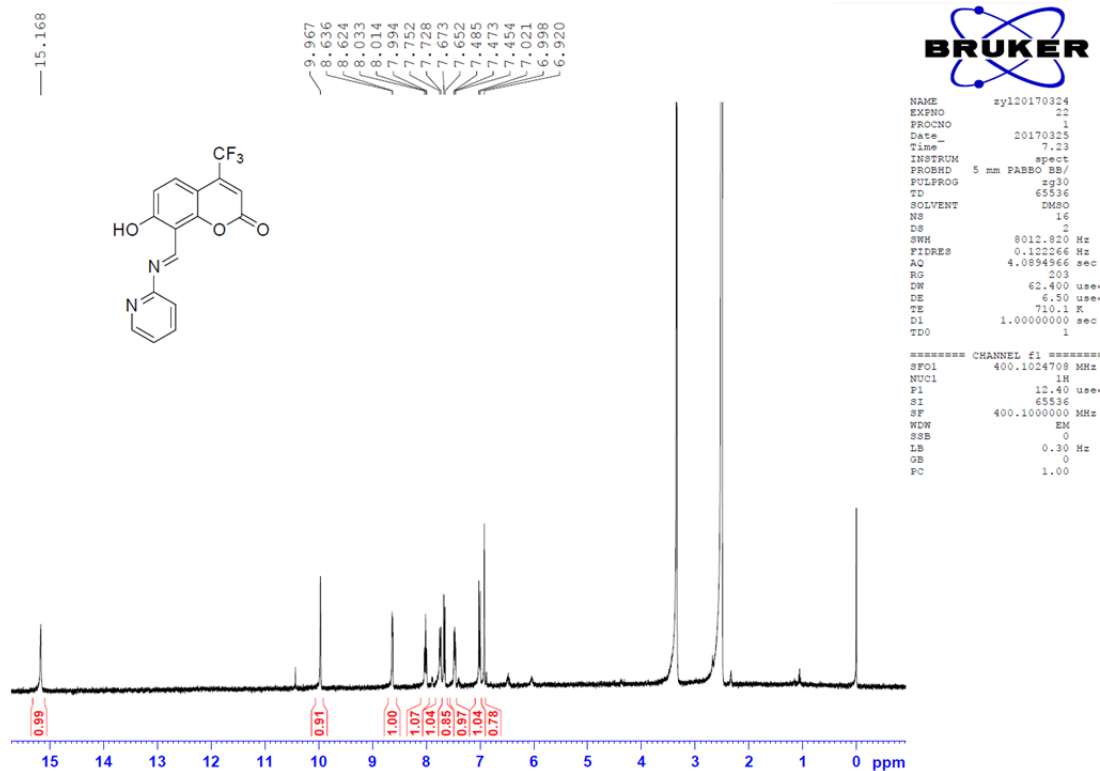


Fig. S3 H NMR of L1 in DMSO-d6.

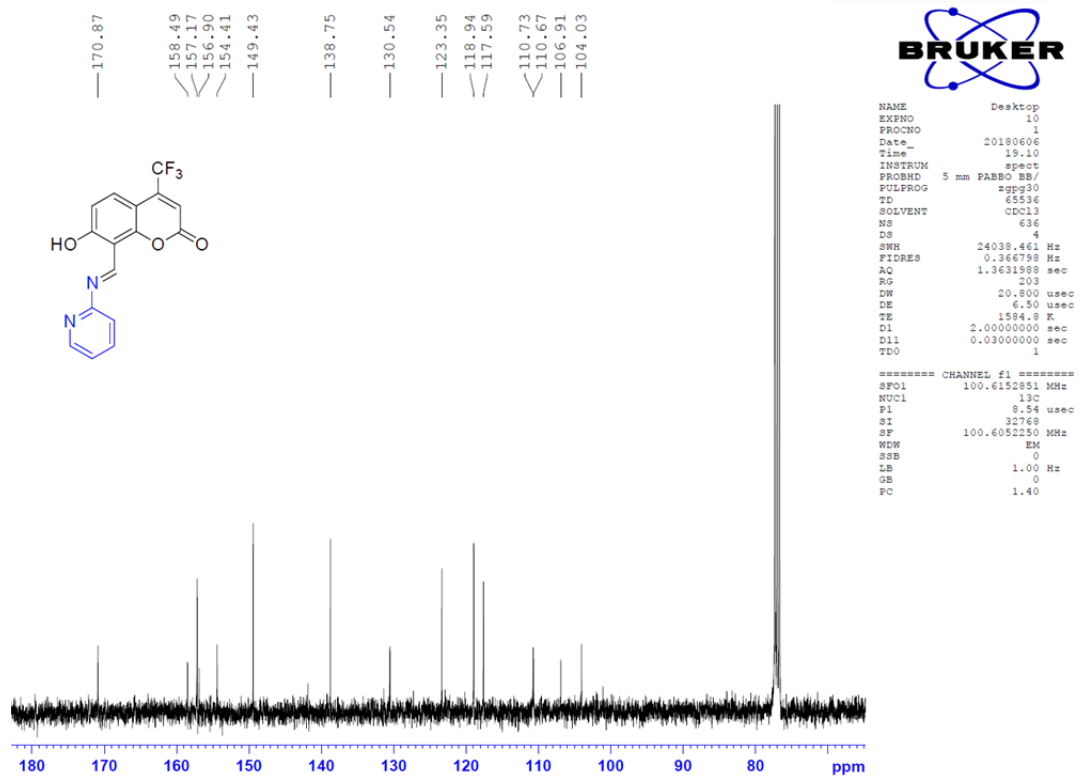


Fig. S4 ^{13}C NMR of L1 in CDCl_3 .

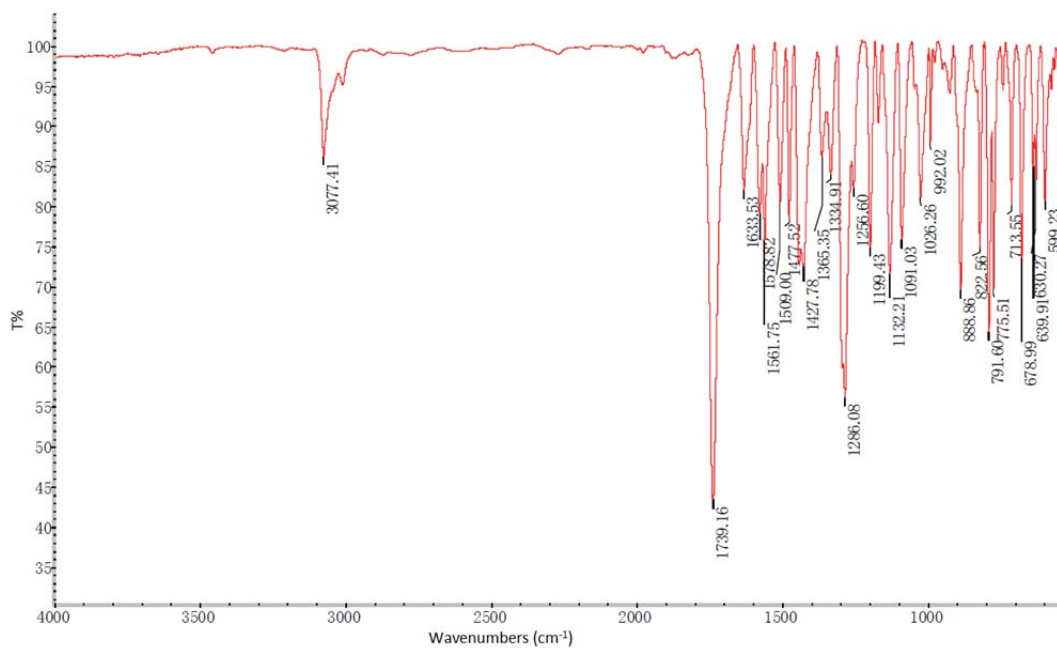


Fig. S5 IR of L1.

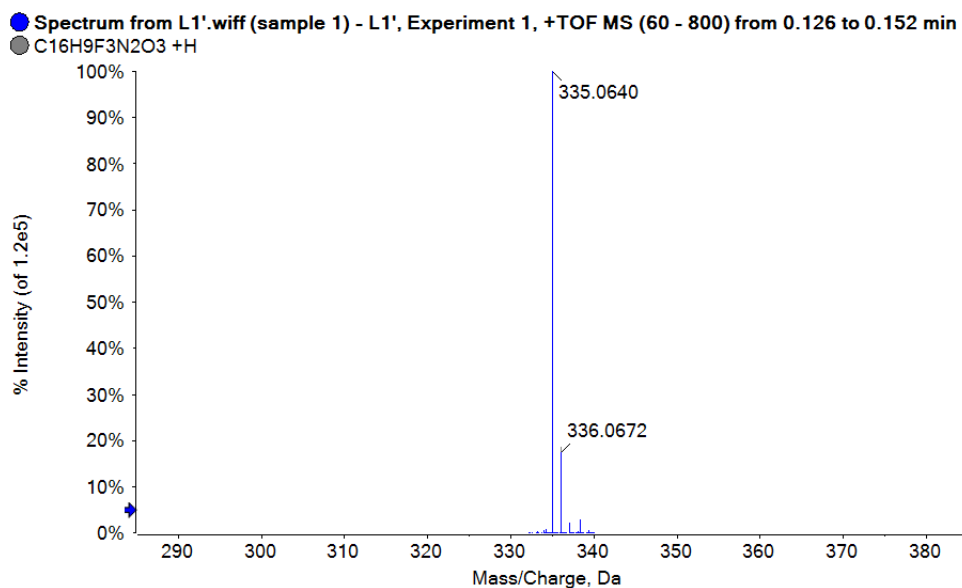


Fig. S6 HRMS of **L1**.

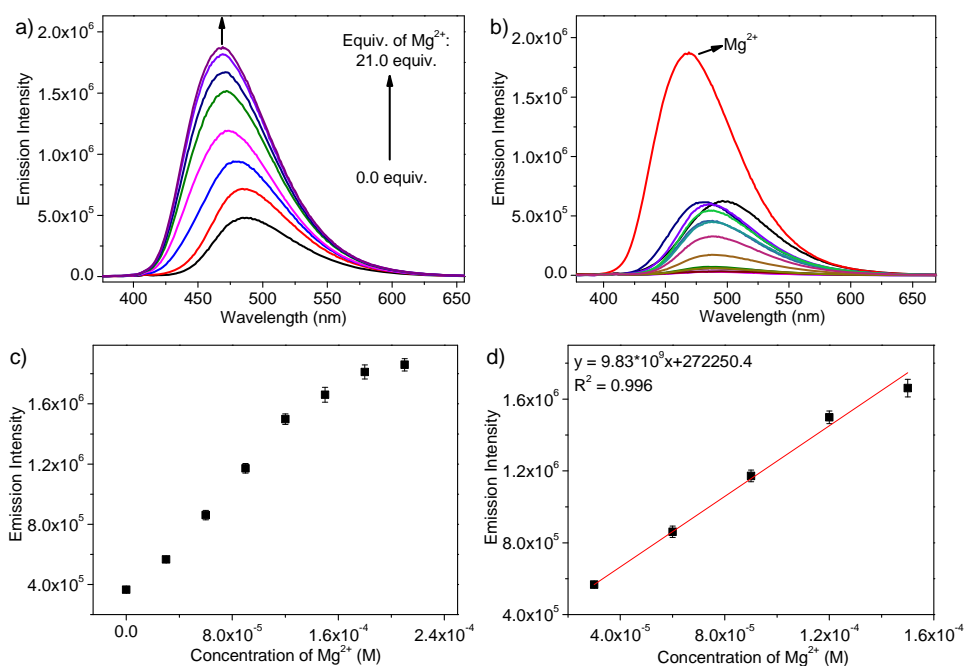


Fig. S7 a) Fluorescence spectral response of **L1** (10 μ M) upon gradual addition of 0-210 μ M of Mg^{2+} in acetonitrile/HEPES (4/1, v/v, pH 7.3) mixed solution; b) Selective fluorescence “turn on” response of **L1** (10 μ M) towards Mg^{2+} in acetonitrile/HEPES (4/1, v/v, pH 7.3) mixed solution (210 μ M for all tested metal ions); c) Calibration curve of **L1** (10 μ M) with increasing amount of Mg^{2+} (parallel test 3 times); d) Linear response range.

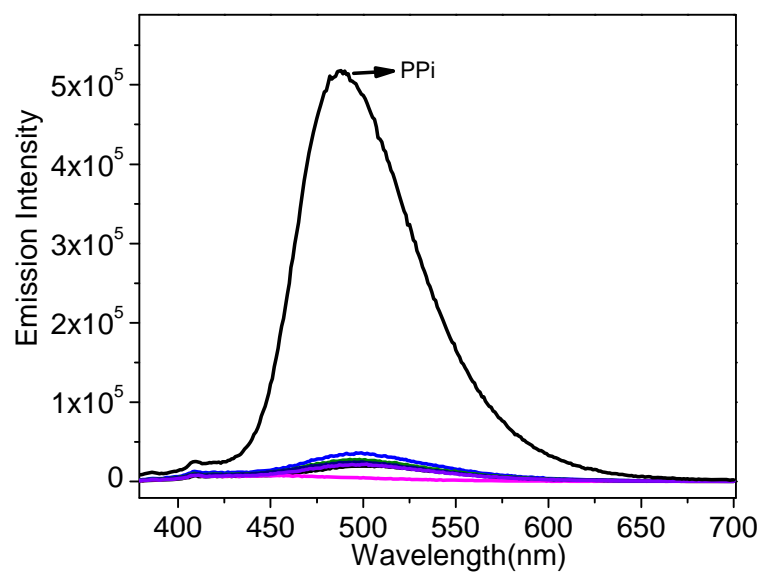


Fig. S8 Selective fluorescence “turn on” response of **L1-Fe³⁺** (10 μ M) towards PPi (90 μ M for each anions).

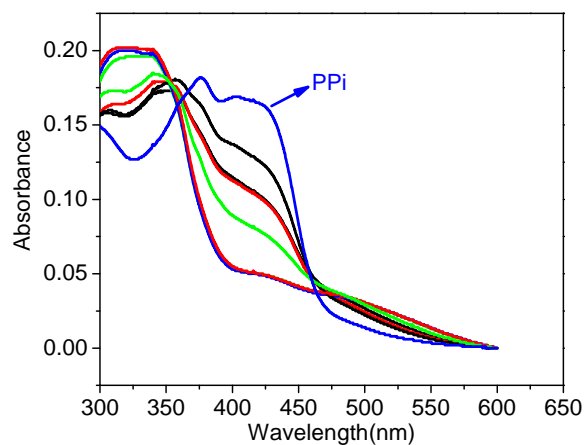


Fig. S9 Anion sensing selectivity of **L1-Fe³⁺** ensemble. It can be seen that only the addition of PPi fully recovered the original absorption peaks of **L1**.

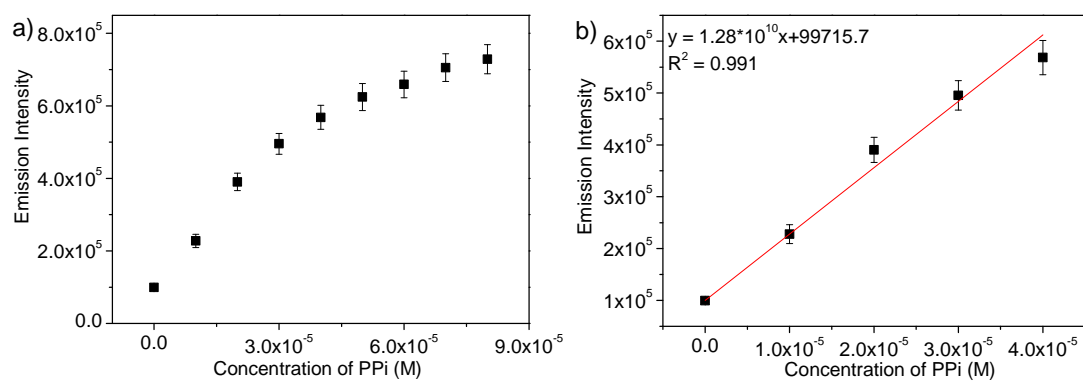


Fig. S10 a) Calibration curve of L1-Fe^{3+} ($10 \mu\text{M}$) with increasing amount of PPI in DMF-HEPES (4/1, v/v, 10 mM, pH 7.2) buffer solution (parallel test 3 times). b) Linear response range.