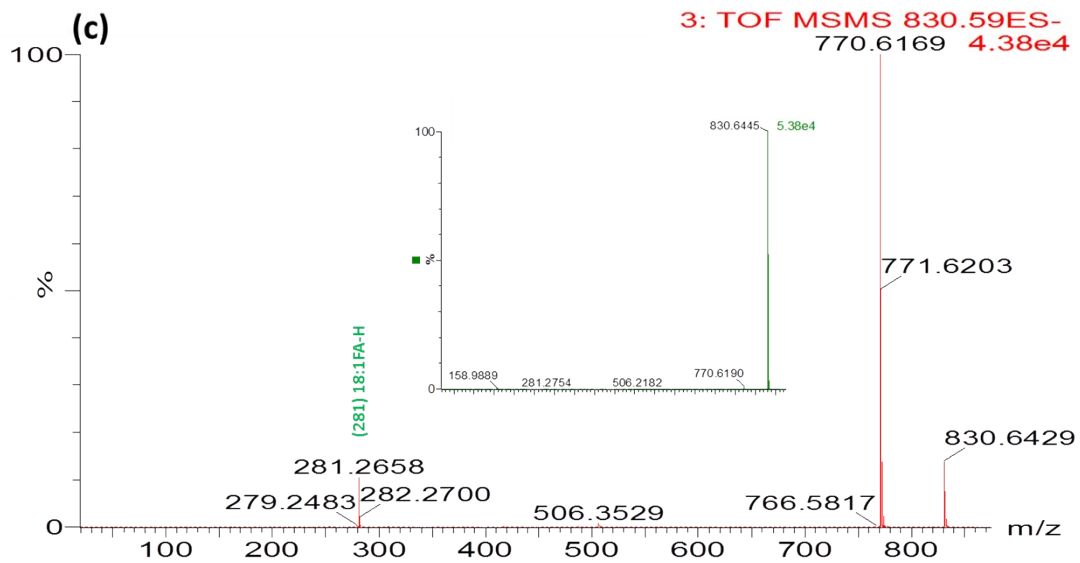
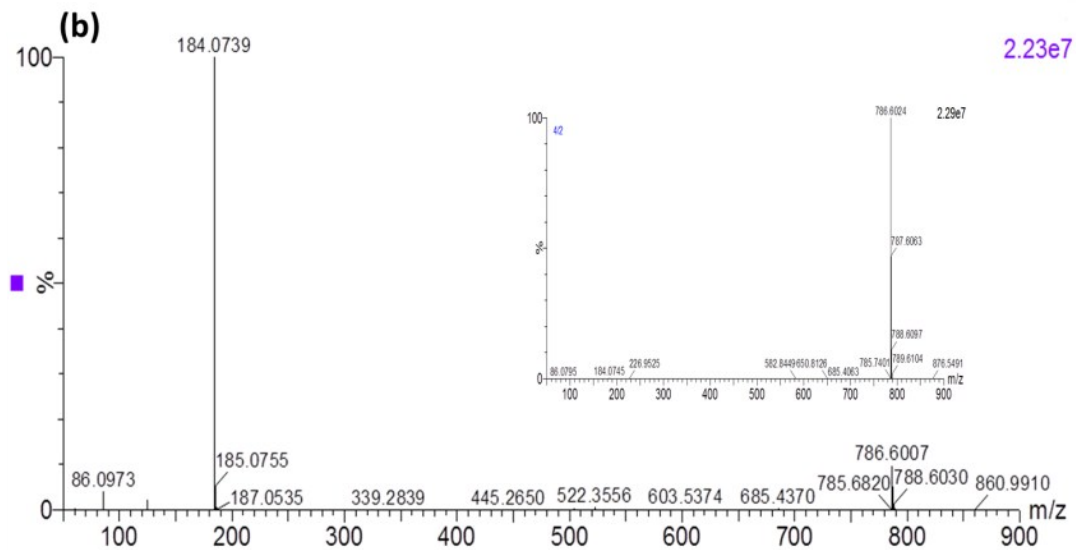
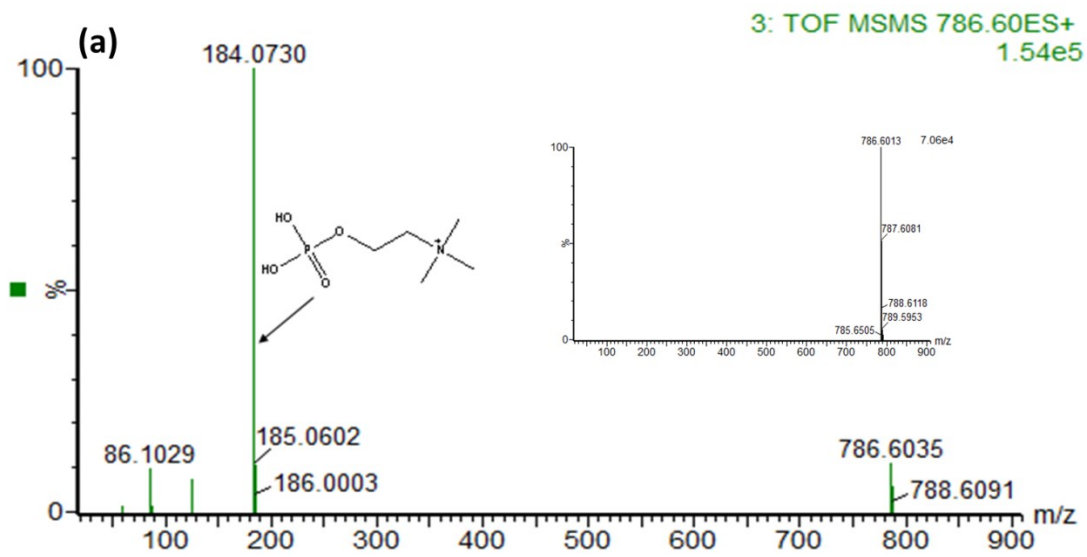


Figure S1. Different lipidomic profilings of the cervical cancer tissues based on LC/MS analysis. (a) Electrospray ionization (ESI) positive and (b) negative modes. Base peak chromatograms (BPC) of the cervical cancer samples are shown from the different groups. Blue, HPV18; Red, HPV16; Black, HPV negative; FFA, free fatty acid; LysoPC, lysophosphatidylcholine; SM, sphingomyelin; Cer, ceramide.



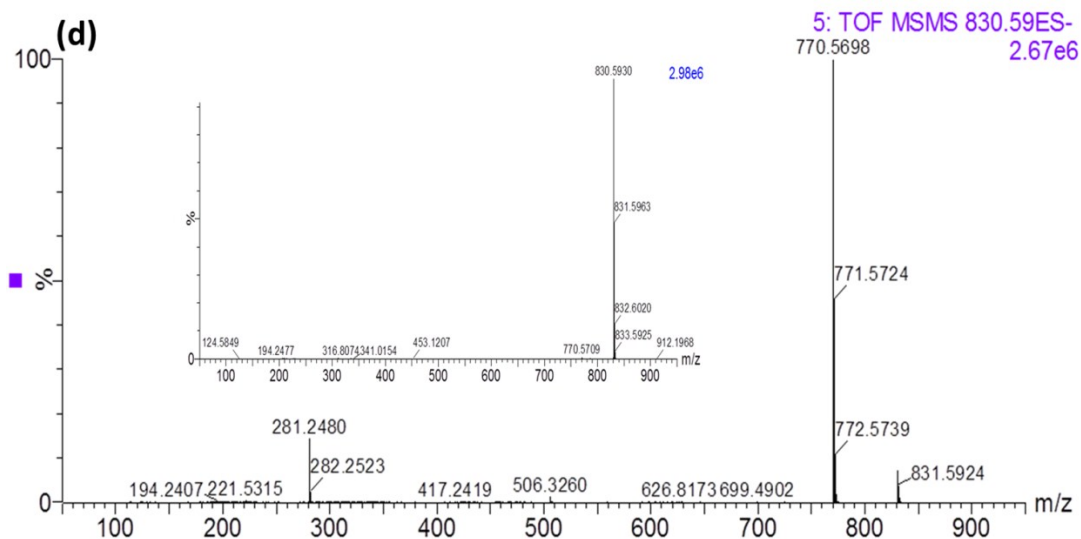
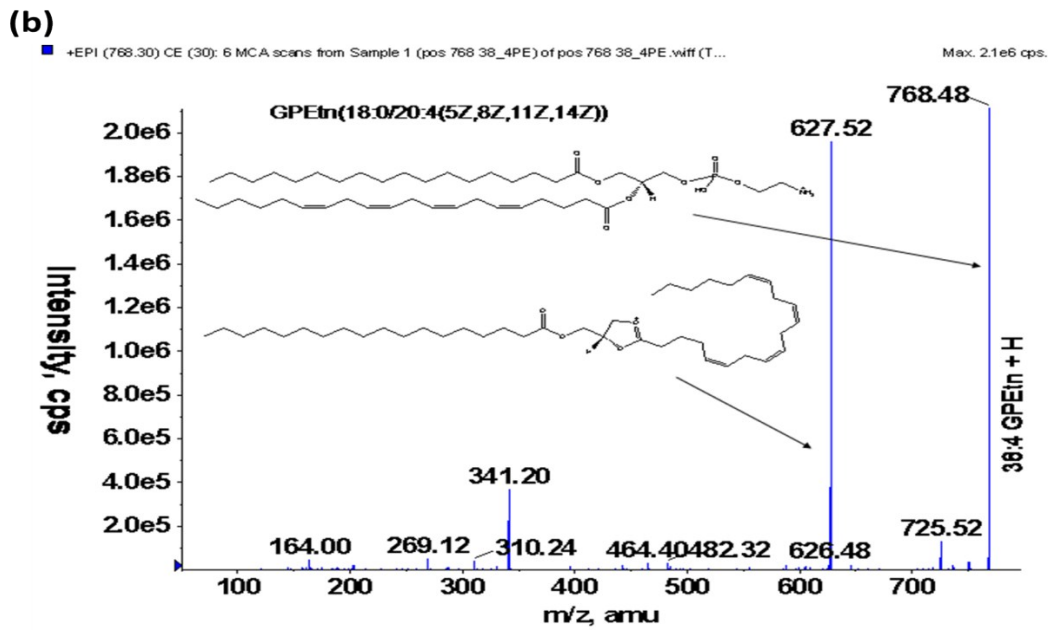
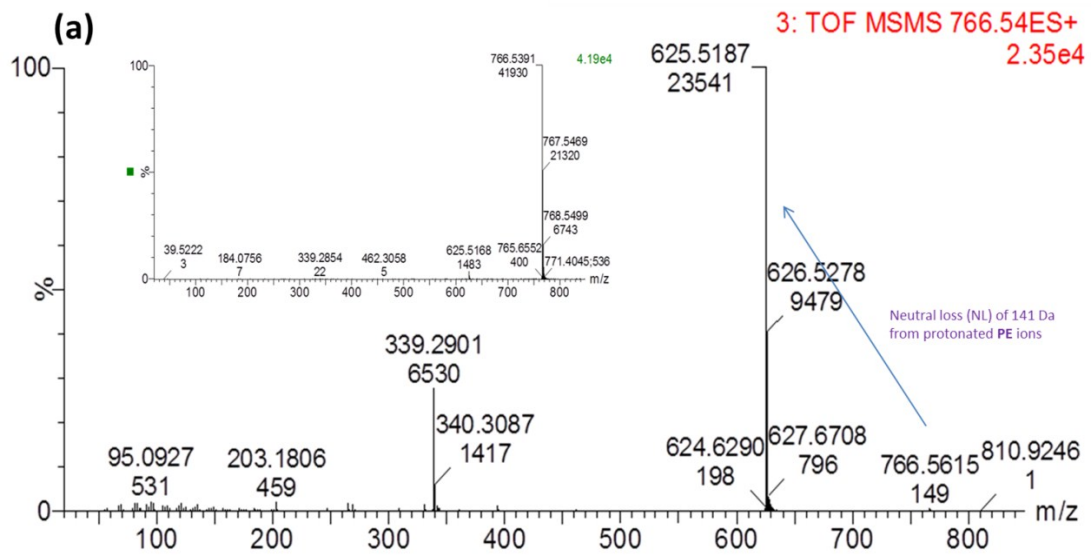


Figure S2. A representative phosphocholine (PC) MS/MS spectra. (a) The QC sample XIC of m/z 786.6083 with $[M+H]^+$ in ESI+ mode of LC-MS analysis. (Upper is the default setting (trap/transfer collision energies (CE) = 6/4; lower at the higher CE =30/4 for gain more fragment.); (b) The MS/MS spectra of the chemical standard PC (18:1/18:1) was used in ESI+ mode. (c) The XIC of m/z 830.5964 $[M+FA-H]^-$ in ESI- mode of LC-MS analysis. (Upper is the default setting (trap/transfer CE=6/4; lower at the higher CE =24/4 for gain more fragment.) (d) The MS/MS spectra of the chemical standard PC (18:1/18:1) was used in ESI- mode.



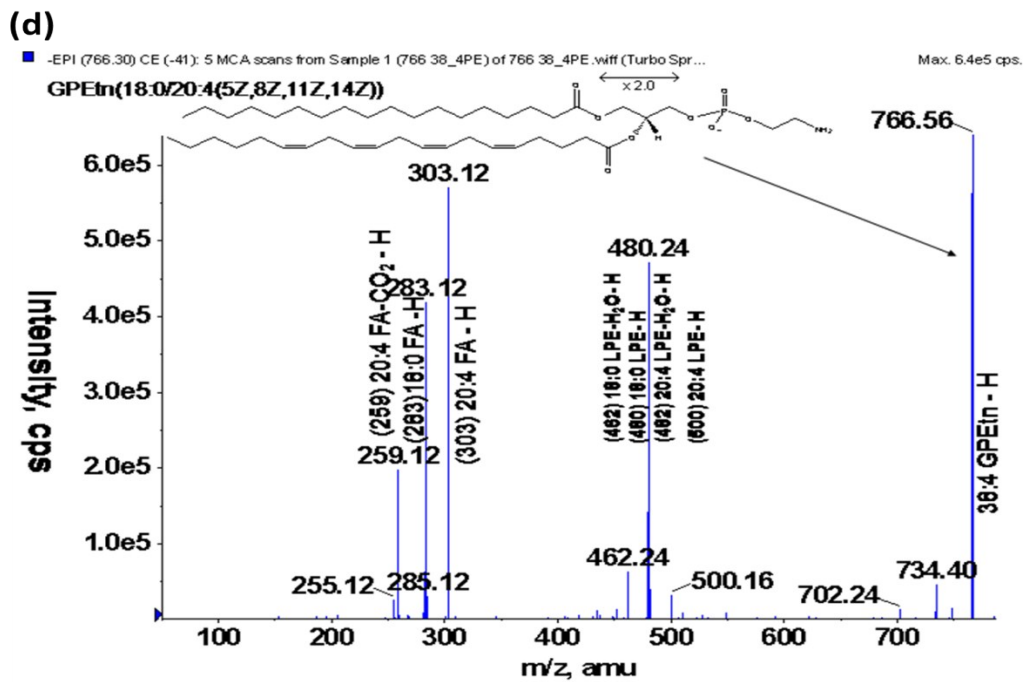
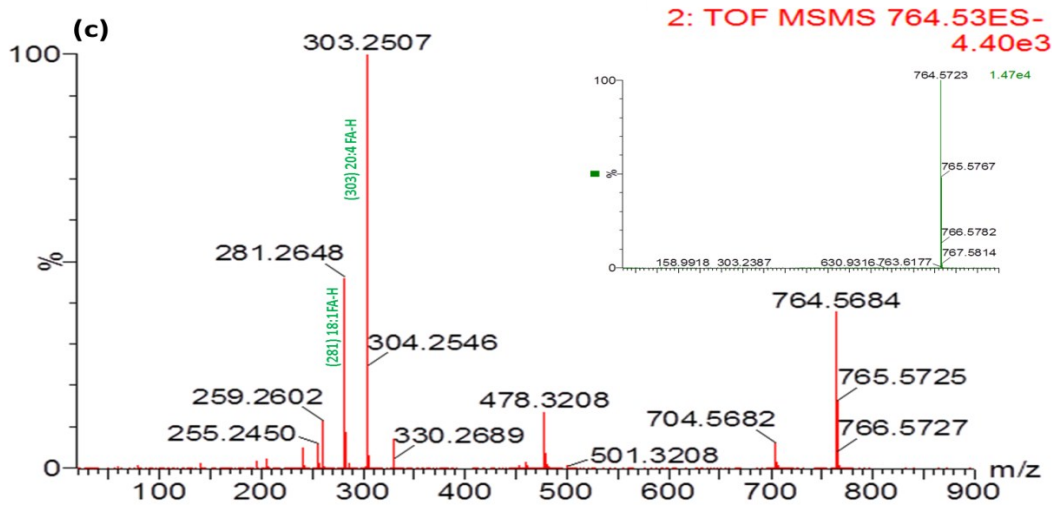


Figure S3. A representative phosphatidylethanolamine (PE) MS/MS spectra. (a) The XIC of m/z 766.5763 with $[M + H]^+$ in ESI+ mode of LC-MS analysis. (Upper is the default setting (trap/transfer CE=6/4; lower at the higher CE =29/4 for gain more fragment.) (b) The XIC of m/z 764.5312 $[M-H]^-$ in ESI- mode of LC-MS analysis. (Upper is the default setting; lower at the higher CE =30/4.) (c) The MS/MS spectra of the PE (38:4) $[M + H]^+$ in ESI+ mode from LIPID MAPS databases (LMGP02010118). (d) The MS/MS spectra of the PE (38:4) $[M-H]^-$ in ESI+ mode from LIPID MAPS databases (LMGP02010118). According to the similar patterns of the fragments, we defined the m/z 764.5312 in ESI- mode as the PE (38:5).

Table S1. Patient's characteristics (N=13).

Variable	Datum	Variable	Datum
<i>Age (year)*</i>	48.1 (27—65)	HPV	
Histopathology		<i>16</i>	4 (32)
<i>Squamous cell</i>	7 (53.8)	<i>18</i>	4 (32)
<i>Adenocarcinoma</i>	4 (32)	<i>45</i>	2 (14.5)
<i>Adenosquamous</i>	1 (7.1)	<i>Multiple</i>	1 (7)
<i>Small cell</i>	1 (7.1)	<i>Absence</i>	2 (14.5)
Grade of differentiation			
<i>Well/Moderate</i>	7 (53.8)	TNM stage	
<i>Poorly</i>	6 (46.2)	<i>T1bN0M0</i>	10(78.7)
Treatment		<i>T1bN1M0</i>	1 (7.1)
<i>Surgery</i>	9 (69.2)	<i>T3bN0M1</i>	1 (7.1)
<i>Chemoradiation</i>	4 (30.8)	<i>T4N1M0</i>	1 (7.1)

Note.—Data in parentheses are %. *Median (range).