

Supplementary Information

Poly (ethylene glycol)-poly-L-glutamate complexed with polyethylenimine-Polyglycine for high efficient gene delivery *in vitro* and *in vivo*

Zhaopei Guo,^{a,b} Lin Lin,^b Jie Chen,^b Xingzhi Zhou,^b Hon Fai Chan,^c Xuesi Chen,^b Huayu Tian,^{*,b}

Meiwan Chen^{*,a}

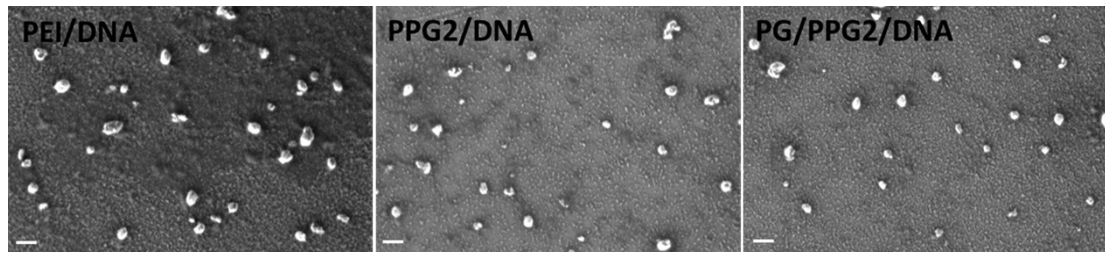


Figure S1 SEM pictures of PEI/DNA, PPG2/DNA, and PG/PPG2/DNA particles, scale bar is 200 nm.

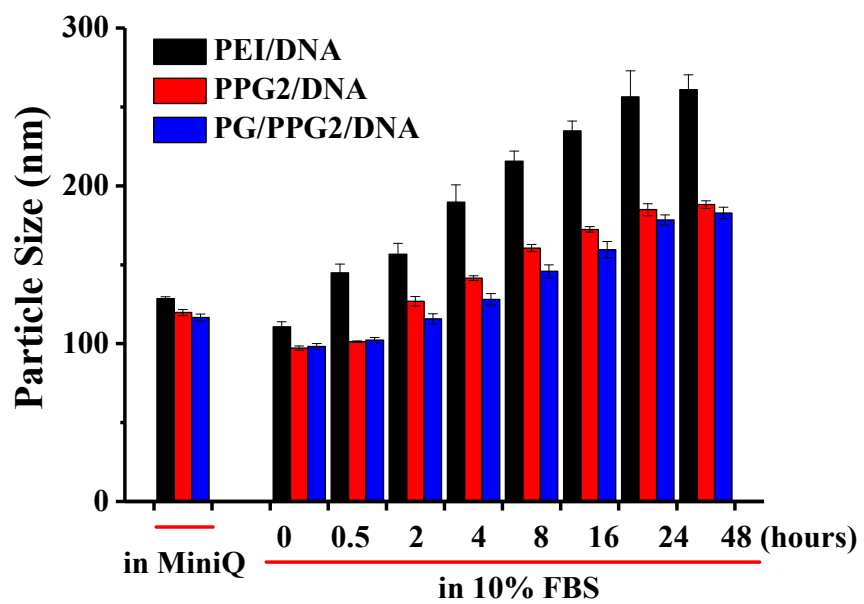


Figure S2 Stability of PEI, PPG2, and PG/PPG2 with DNA in 10% FBS

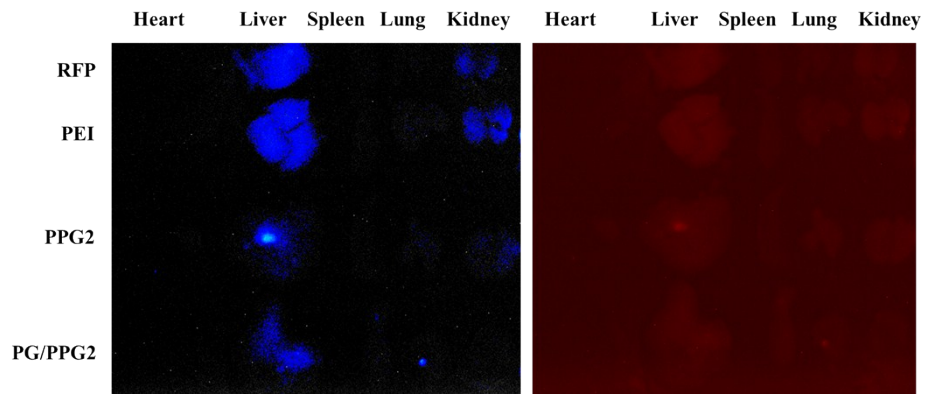


Figure S3 RPF expression in other organs