

Supporting Information

BaCaLu₂F₁₀:Ln³⁺ (Ln = Eu, Dy, Tb, Sm, Yb/Er, Yb/Ho) Spheres: Ionic Liquid-based
Synthesis and Luminescence Properties

Wei Liu^{a,b}, Qi Sun^a, Ming Yan^b, Yanhua Song^{a*}, Xiuqing Zhou^a, Ye Sheng^a, Keyan
Zheng^a, Haifeng Zou^{a*}

^a College of Chemistry, Jilin University, 130012, P. R. China.

^b Department of Spinal Surgery, First Hospital, Jilin University, Changchun, Jilin,
130021, P. R. China.

*To whom correspondence should be addressed. E-mail: yhsong@jlu.edu.cn (Y. S.);
zouhf@jlu.edu.cn (H. Z.)

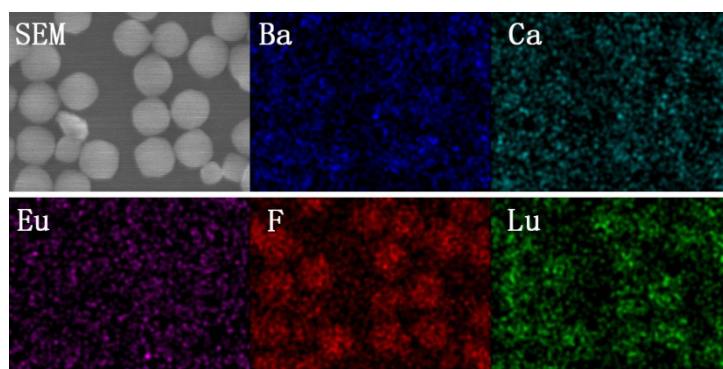


Figure S1 SEM image and EDS mapping for each element in BaCaLu₂F₁₀:6%Eu³⁺

Table S1 Quantum yields of BaCaLu₂F₁₀:RE³⁺ (RE = Eu, Dy, Tb, Sm)

Sample	Quantum yield (%)									
	x=0.01	x=0.02	x=0.03	x=0.04	x=0.05	x=0.06	x=0.07	x=0.08	x=0.09	x=0.10
BaCaLu ₂ F ₁₀ :xEu ³⁺	15.15	18.46	34.35	35.07	51.94	80	72.15	60	22.69	22.16
BaCaLu ₂ F ₁₀ :xDy ³⁺	2.32	13.85	7.29	4.79	4.11					
BaCaLu ₂ F ₁₀ :0.05Tb ³⁺	45.04									
BaCaLu ₂ F ₁₀ :0.05Sm ³⁺	40.18									