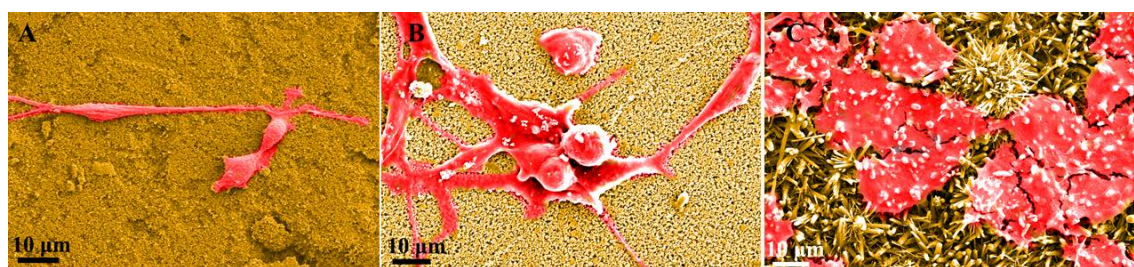


Figure 1. ICP results of the reacted reagents. Detected elements included calcium, phosphate and silicon.



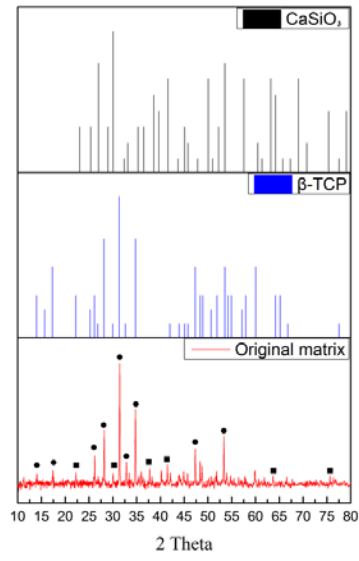


Figure 3. XRD of original matrix. Squares corresponded to CaSiO_3 characteristic peak and circles corresponded to $\beta\text{-TCP}$. Wollastonite JCPDS code 00-002-0689, whitlockite 00-003-0713

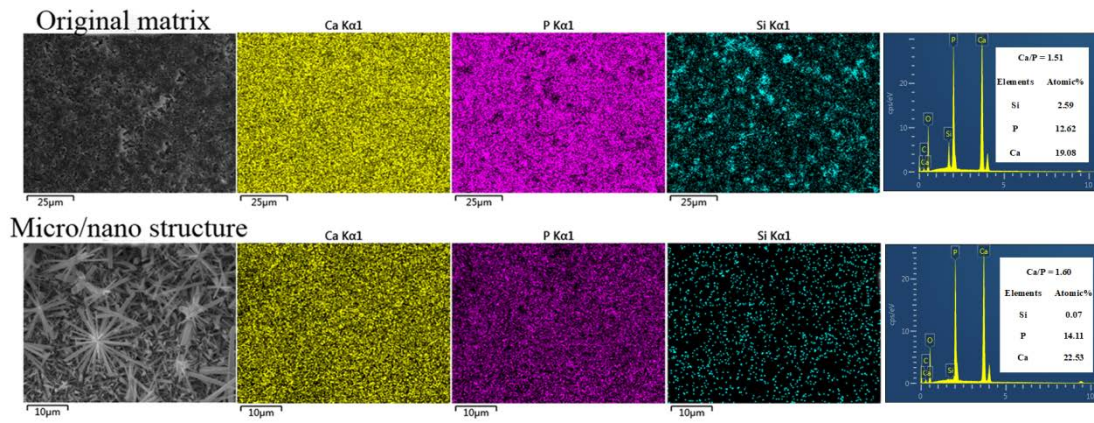


Figure 4. EDS of the original matrix and micro/nano structured surface.