

SUPPORTING INFORMATION

Photodegradation of 2,4,4'-tribrominated diphenyl ether in various surfactant solutions: Kinetics, mechanisms and intermediates

Kaibo Huang¹, Guining Lu^{1,2*}, Zhiqiang Zheng¹, Rui Wang¹, Ting Tang¹,
Xueqin Tao³, Ruibing Cai³, Zhi Dang^{1,4}, Pingxiao Wu^{1,2}, Hua Yin^{1,4}

1. School of Environment and Energy, South China University of Technology,
Guangzhou 510006, China
2. Guangdong Provincial Engineering and Technology Research Center for
Environmental Risk Prevention and Emergency Disposal, Guangzhou 510006,
China
3. School of Environmental Science and Engineering, Zhongkai University of
Agriculture and Engineering, Guangzhou 510225, China
4. The Key Lab of Pollution Control and Ecosystem Restoration in Industry Clusters,
Ministry of Education, Guangzhou 510006, China

* Corresponding author: School of Environment and Energy, South China University
of Technology, Guangzhou 510006, China; Tel: +86-20-39380569, Fax: +86-20-
39380508; E-mail address: GNLu@foxmail.com

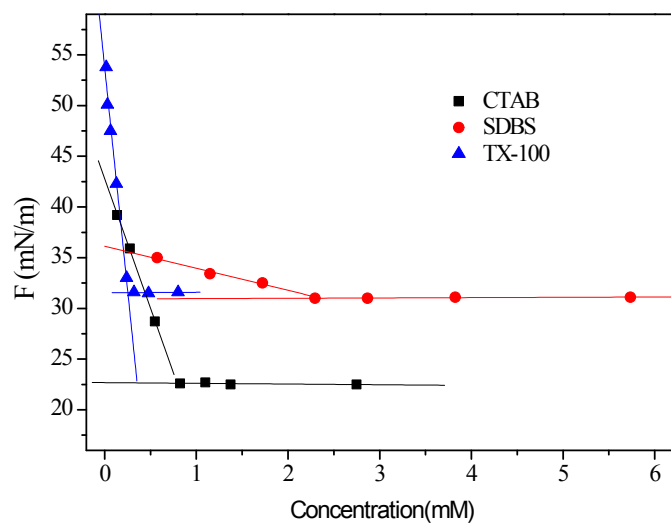


Figure S1. Plots surface tension (F) versus surfactants concentration of various surfactants at 25°C.

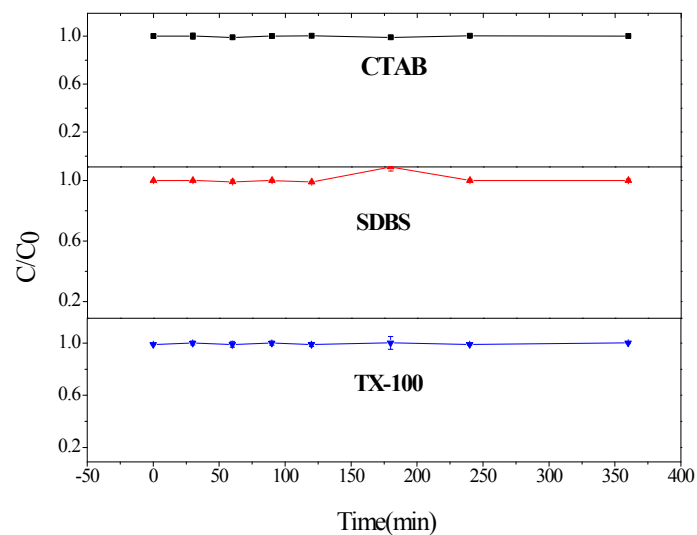


Figure S2. the dark experiment of BDE-28 photodegradation in TX-100, SDBS and CTAB

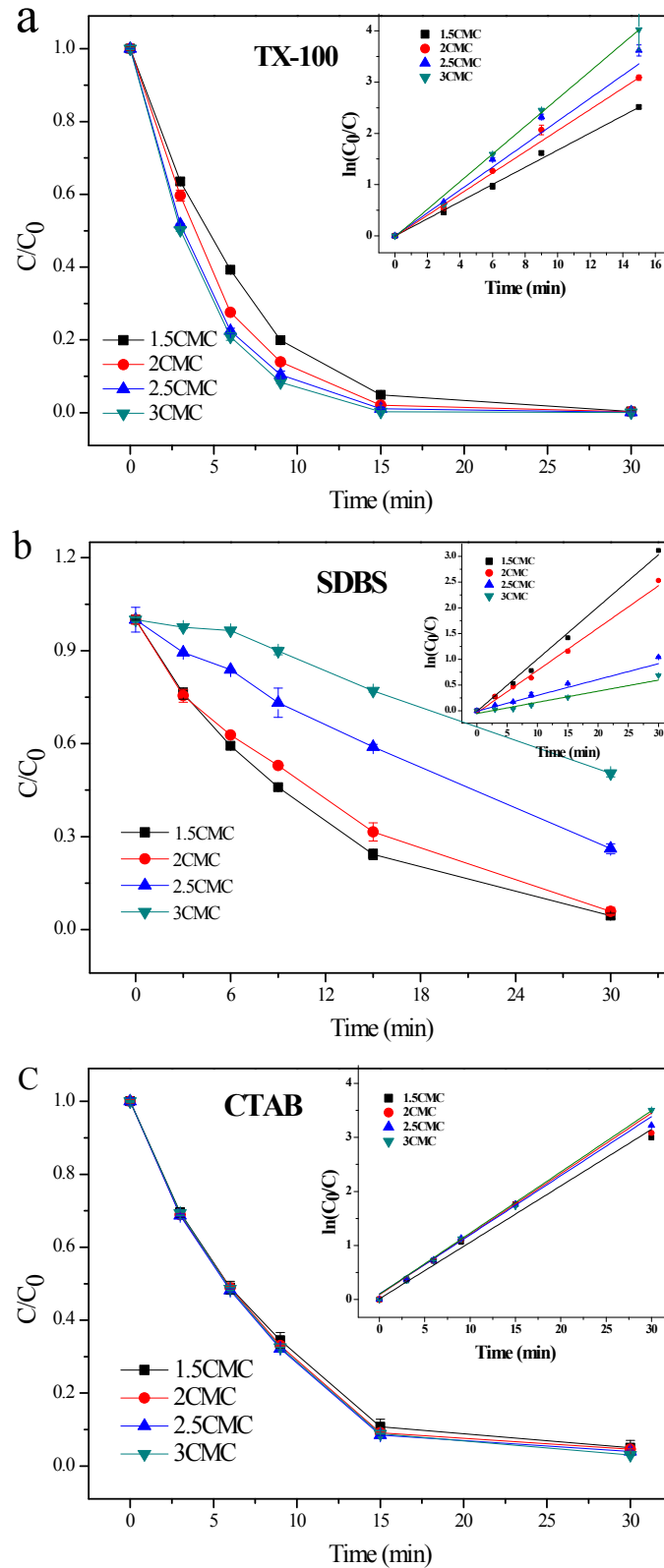


Figure S3. BDE-28 photodegradation in various concentrations of TX-100 (a), SDBS(b) and CTAB(c)

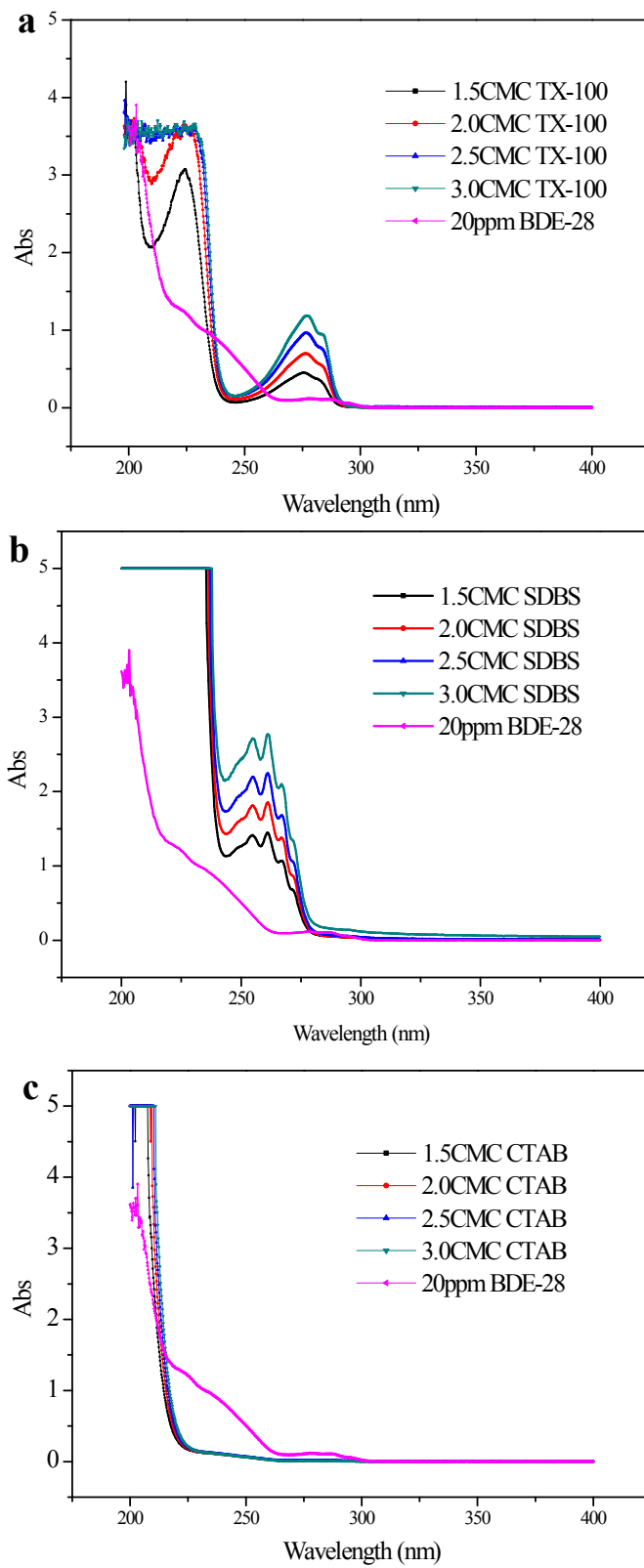
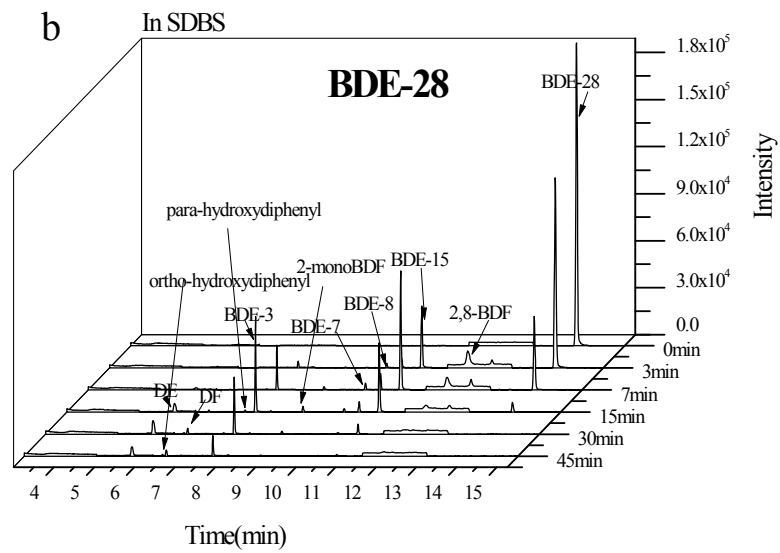
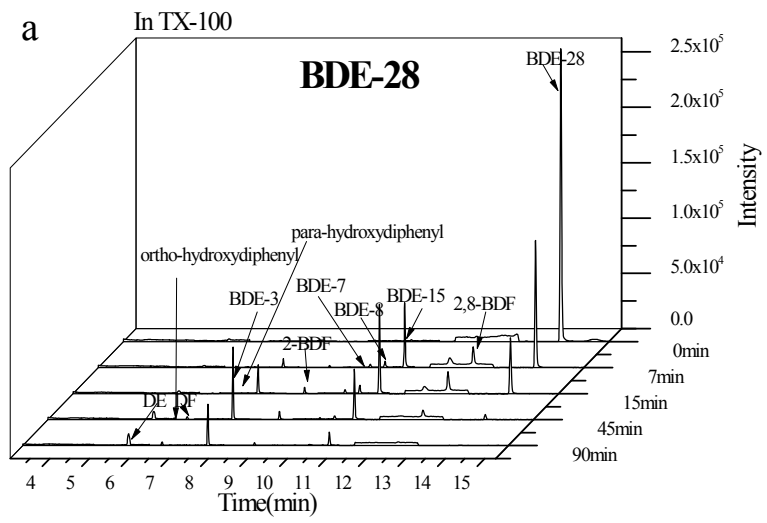


Figure S4. The ultraviolet spectrum of TX-100 (a), SDBS (b) and CTAB (c)



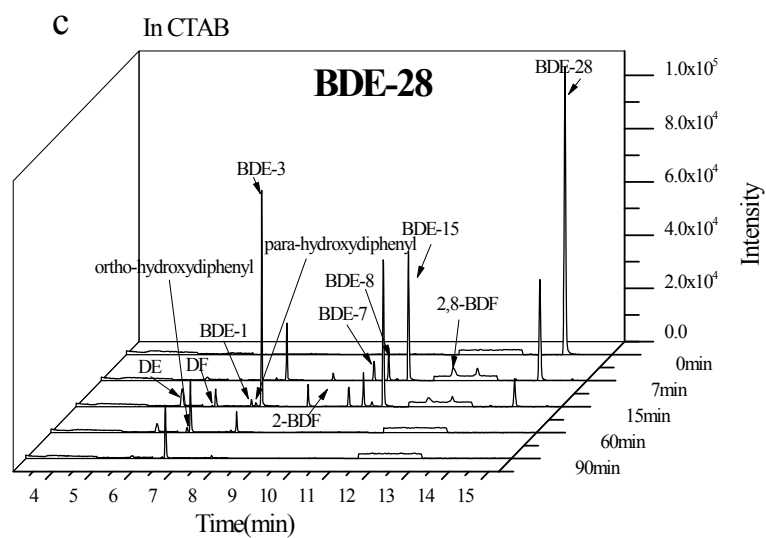


Figure S5. the chromatogram of BDE-28 photodegradation in TX-100(a), SDBS(b) and CTAB(c)

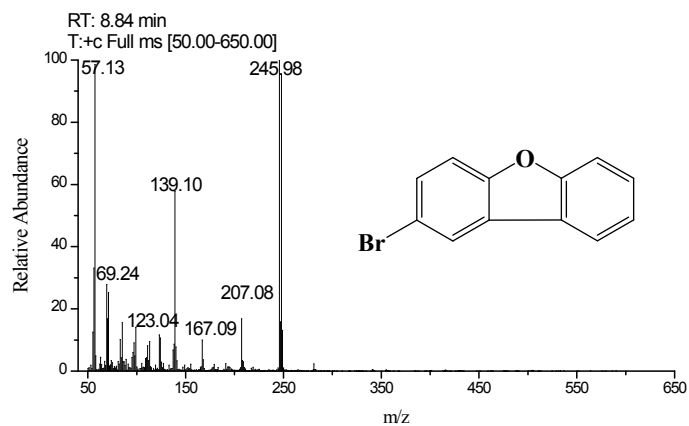


Figure S6. Mass spectra of 2-BDF

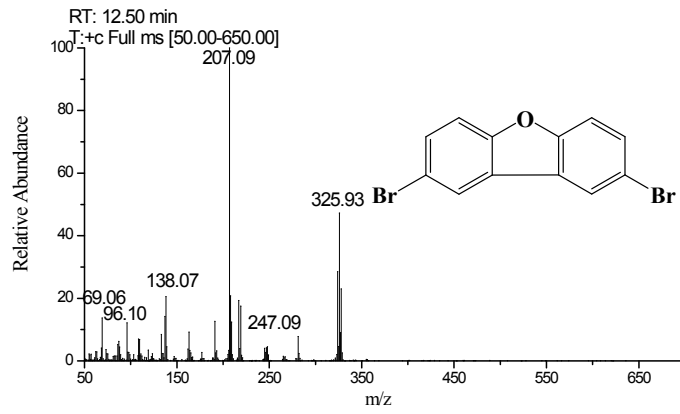
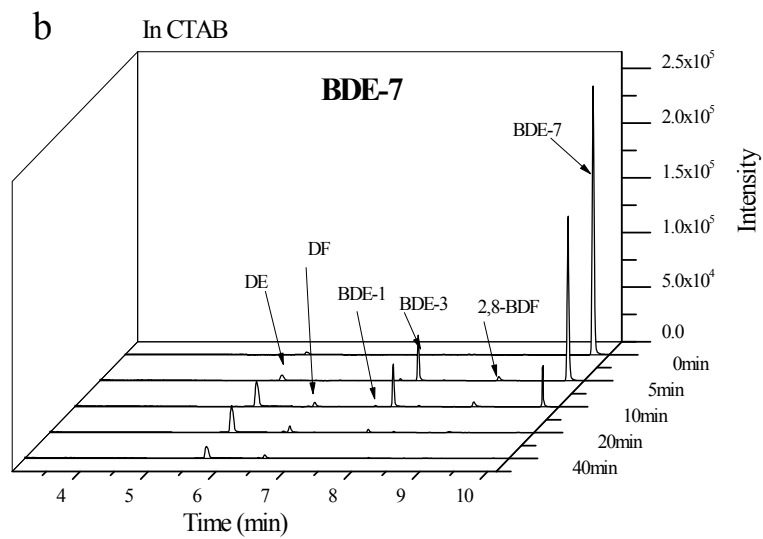
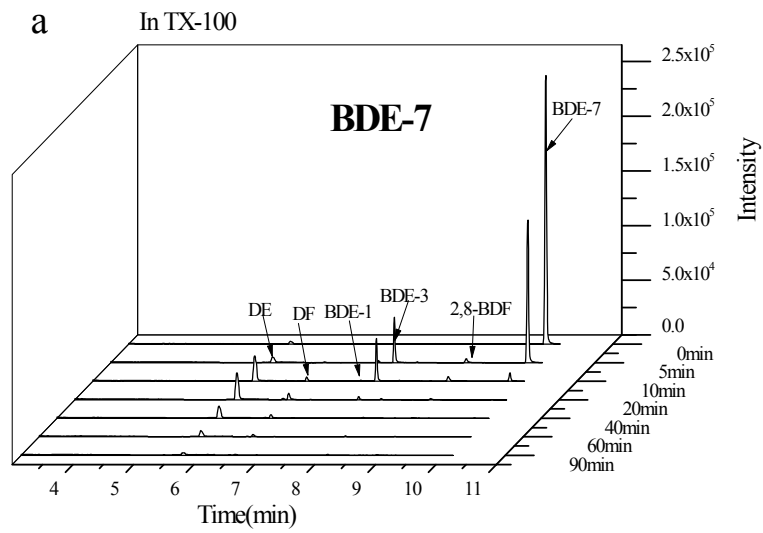


Figure S7. Mass spectra of 2,8-BDF



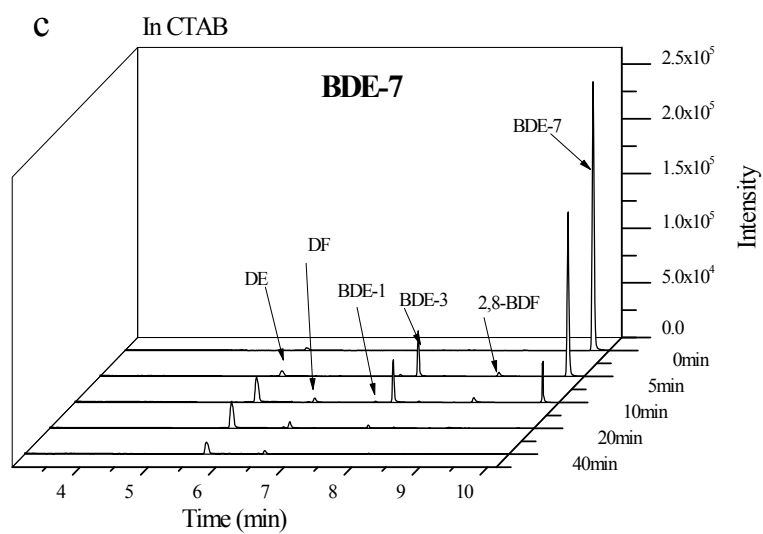
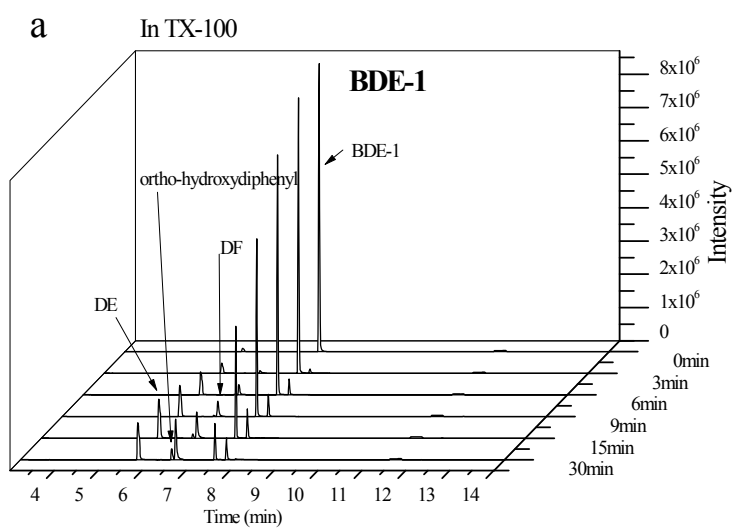


Figure S8. the chromatogram of BDE-7 photodegradation in TX-100(a), SDBS(b) and CTAB(c)



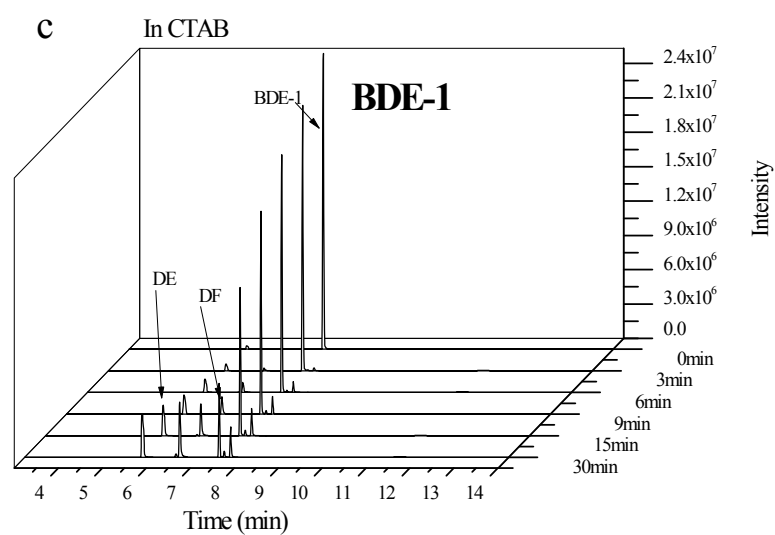
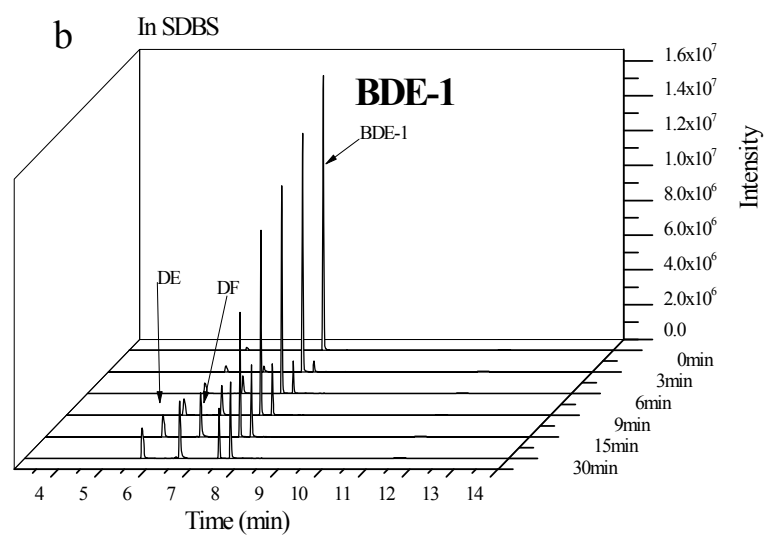
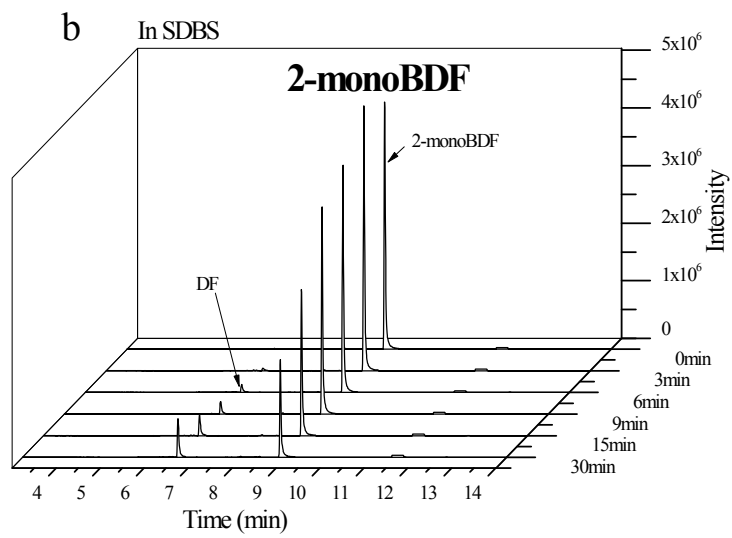
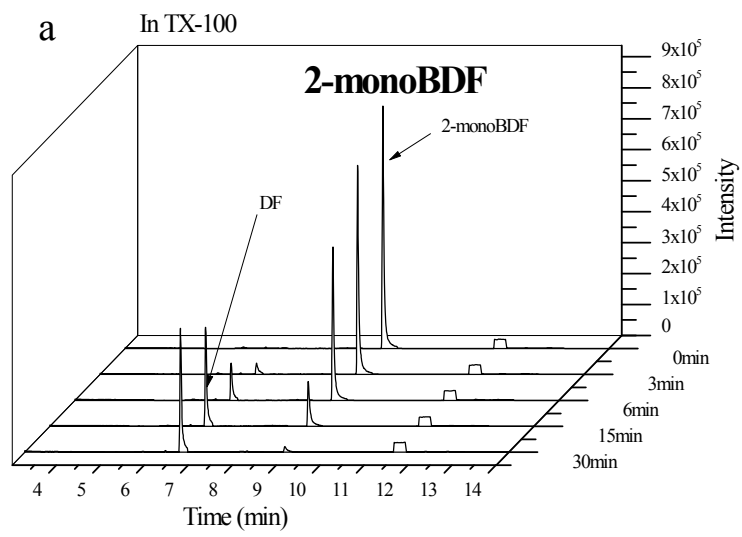


Figure S9. the chromatogram of BDE-1 photodegradation in TX-100(a), SDBS(b) and CTAB(c)



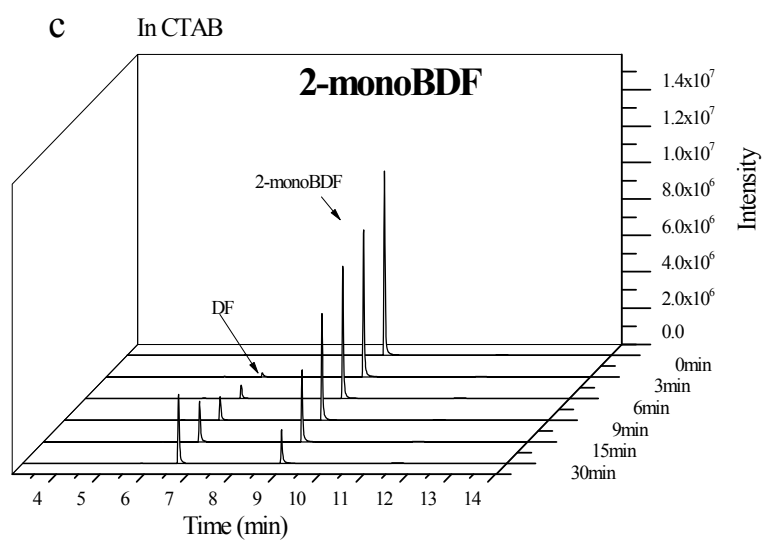
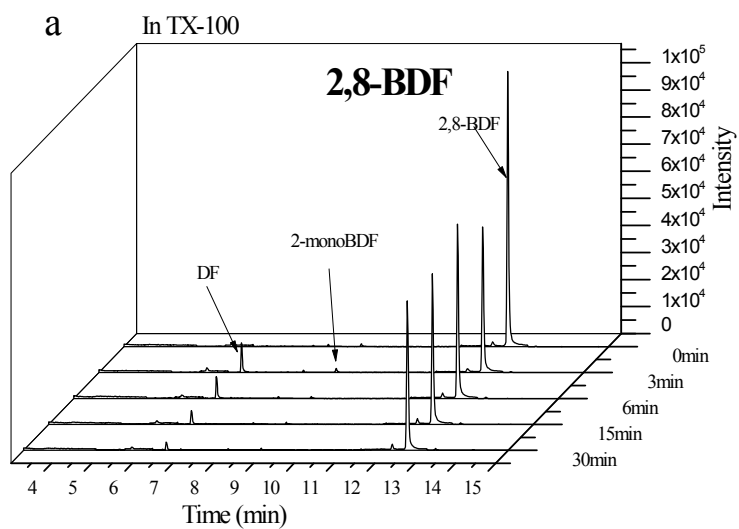


Figure S10. the chromatogram of 2-BDF photodegradation in TX-100(a), SDBS(b) and CTAB(c)



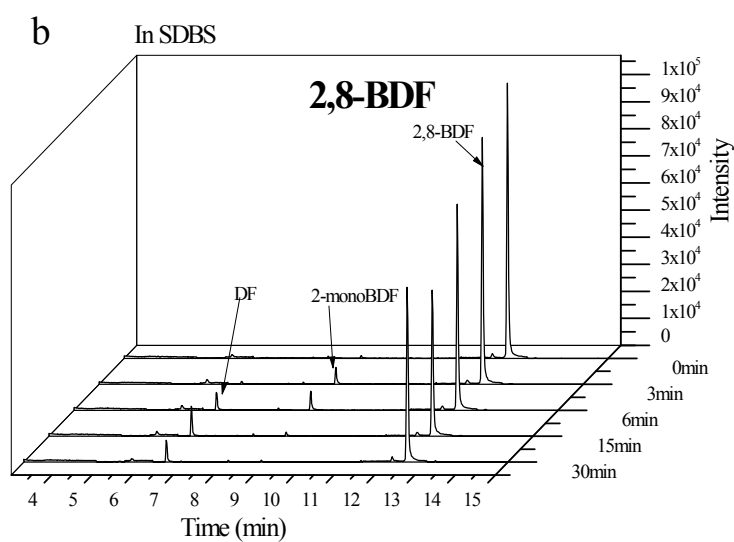
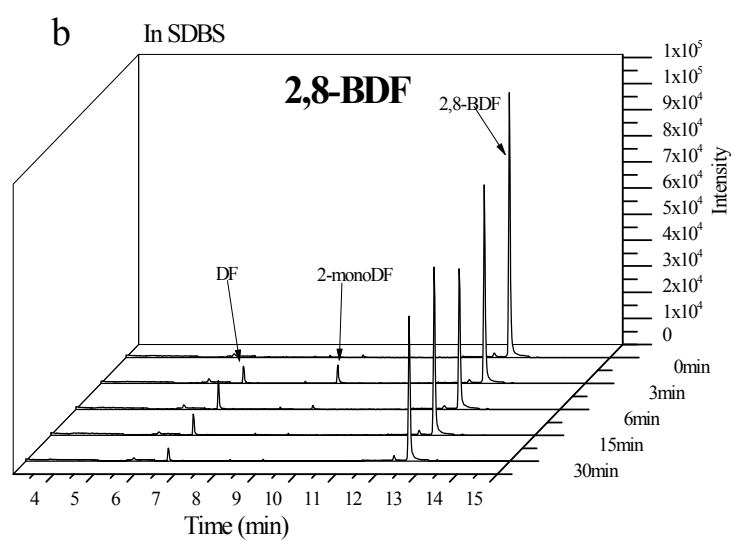
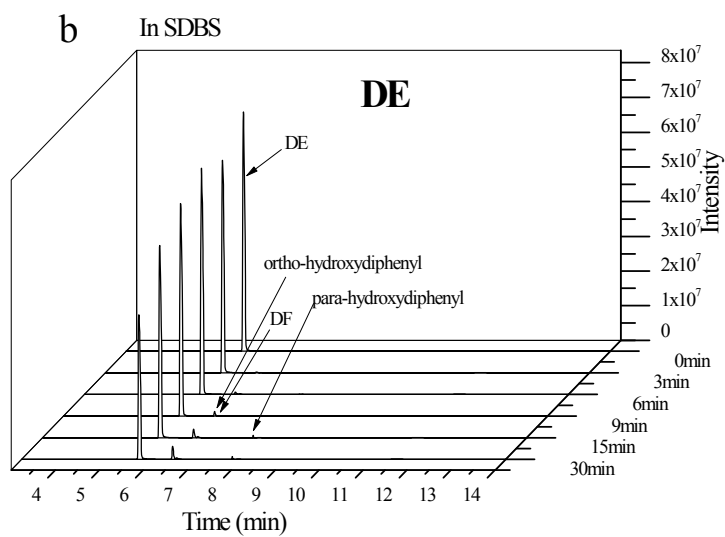
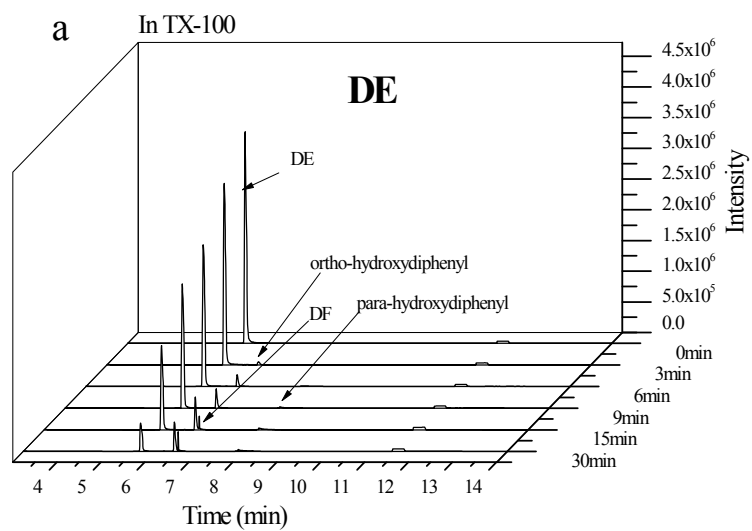


Figure S11. the chromatogram of 2,8-BDF photodegradation in TX-100(a), SDBS(b) and CTAB(c)



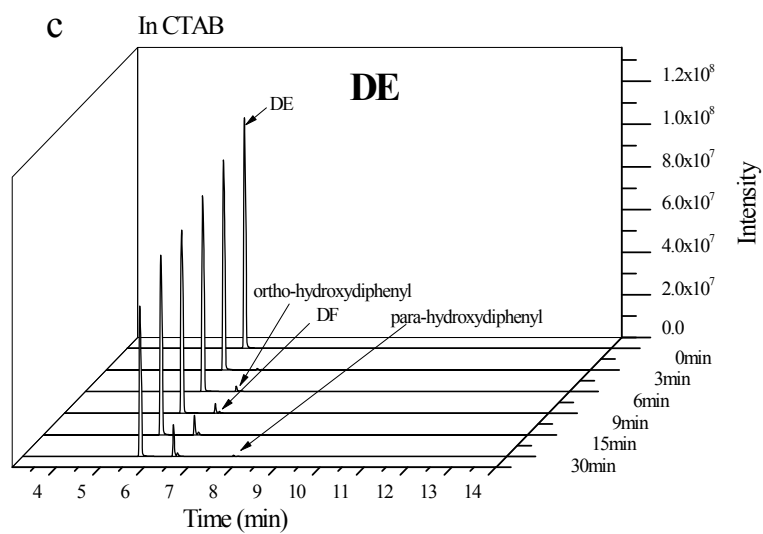


Figure S12. the chromatogram of BDE-15 photodegradation in TX-100(a), SDBS(b) and CTAB(c)

Table S1: The mass spectrometry parameters of BDE-28 product

Compounds	Retention Time	Fragment ion
DE	5.51	115, 141, 170
Ortho-hydroxydiphenyl	6.24	115, 141, 170
DF	6.32	139, 168
BDE-1	7.18	115, 141, 169, 220, 248
BDE-3	7.43	115, 141, 169, 220, 248
Para-hydroxydiphenyl	7.48	115, 141, 170
2-monoBDF	8.44	139, 167, 246, 248
BDE-7	9.40	139, 168, 328
BDE-8	9.75	139, 168, 328
BDE-15	10.22	140, 168, 219, 328
2,8-BDF	11.74	138, 163, 219, 245, 326
BDE-17	12.68	139, 167, 248, 406
BDE-28	13.27	139, 167, 248, 406