

Supporting Information for:

Peptides from chicken processing by-product inhibit DPP-IV and promote cellular glucose uptake: potential ingredients for T2D management

Rita de Cássia Lemos Lima,¹ Ragnhild Stenberg Berg,¹ Sissel Beate Rønning,¹ Nils Kristian Afseth,¹ Svein Halvor Knutsen,¹ Dan Staerk,² and Sileshi Gizachew Wubshet^{1*}

¹*NOFIMA AS, Osloveien 1, Ås, Norway*

²*Department of Drug Design and Pharmacology, University of Copenhagen, Copenhagen, Denmark*

*Corresponding author. Tel.: +47 909 17 126

E-mail address: sileshi.wubshet@nofima.no (Sileshi G. Wubshet).

Figure S1. Dose response curves of DPP-IV inhibition for the crude hydrolysate RC80 (A) and the corresponding SEC fraction F5 (B). Inserted below are IC_{50} values, 95% confidence interval (CI) and R^2 value of the none-linear fit.

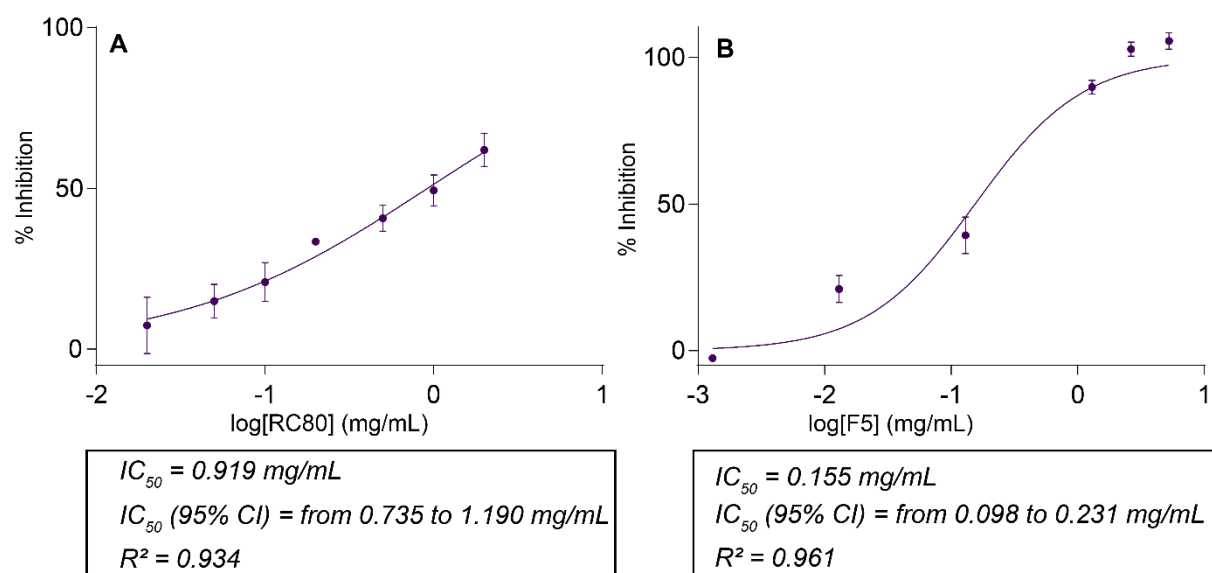


Figure S2. MS (top) and MS/MS (bottom) spectra of the peptide eluted as peak 1.

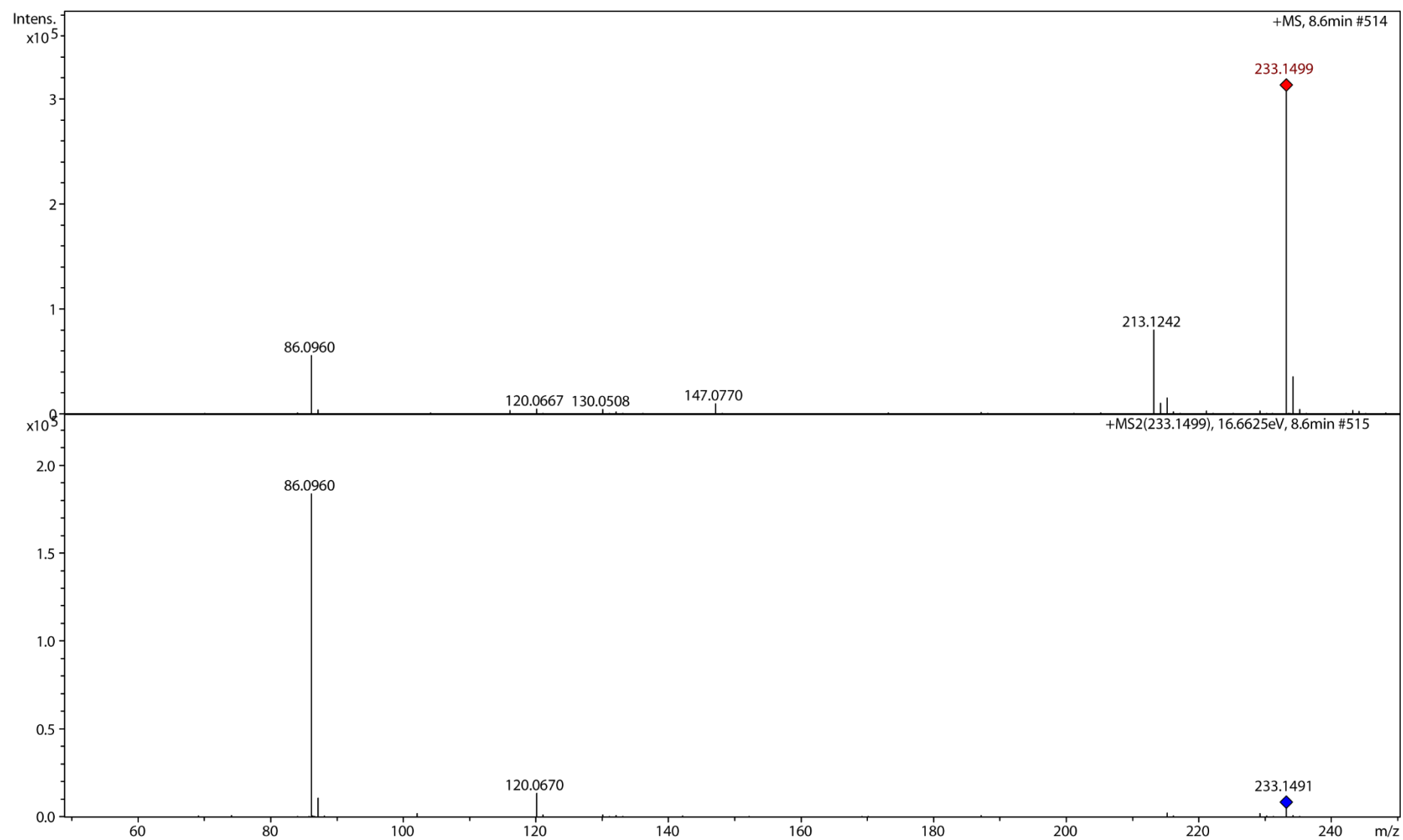


Figure S3. MS (top) and MS/MS (bottom) spectra of the peptide eluted as peak 2.

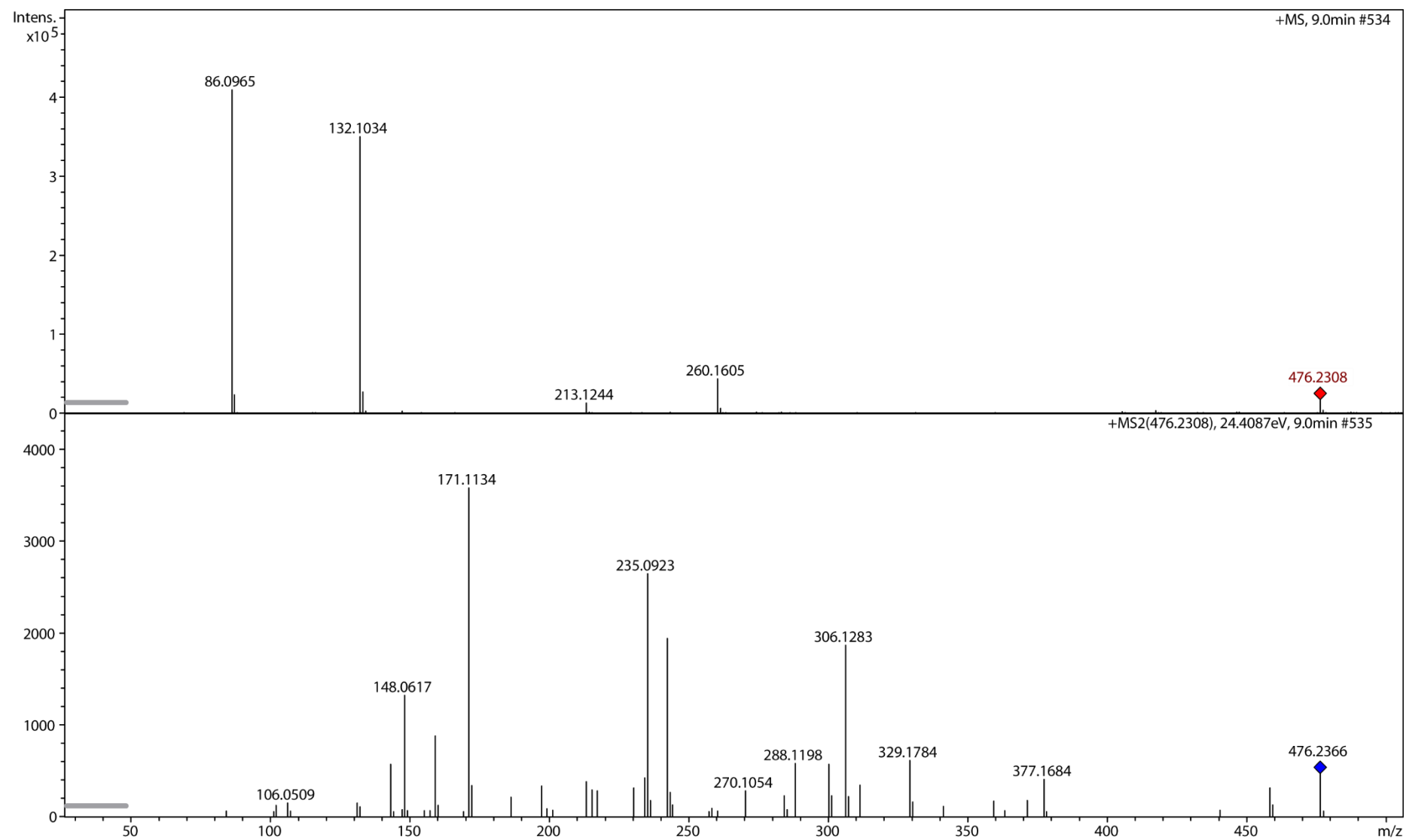


Figure S4. MS (top) and MS/MS (bottom) spectra of the peptide eluted as peak 3.

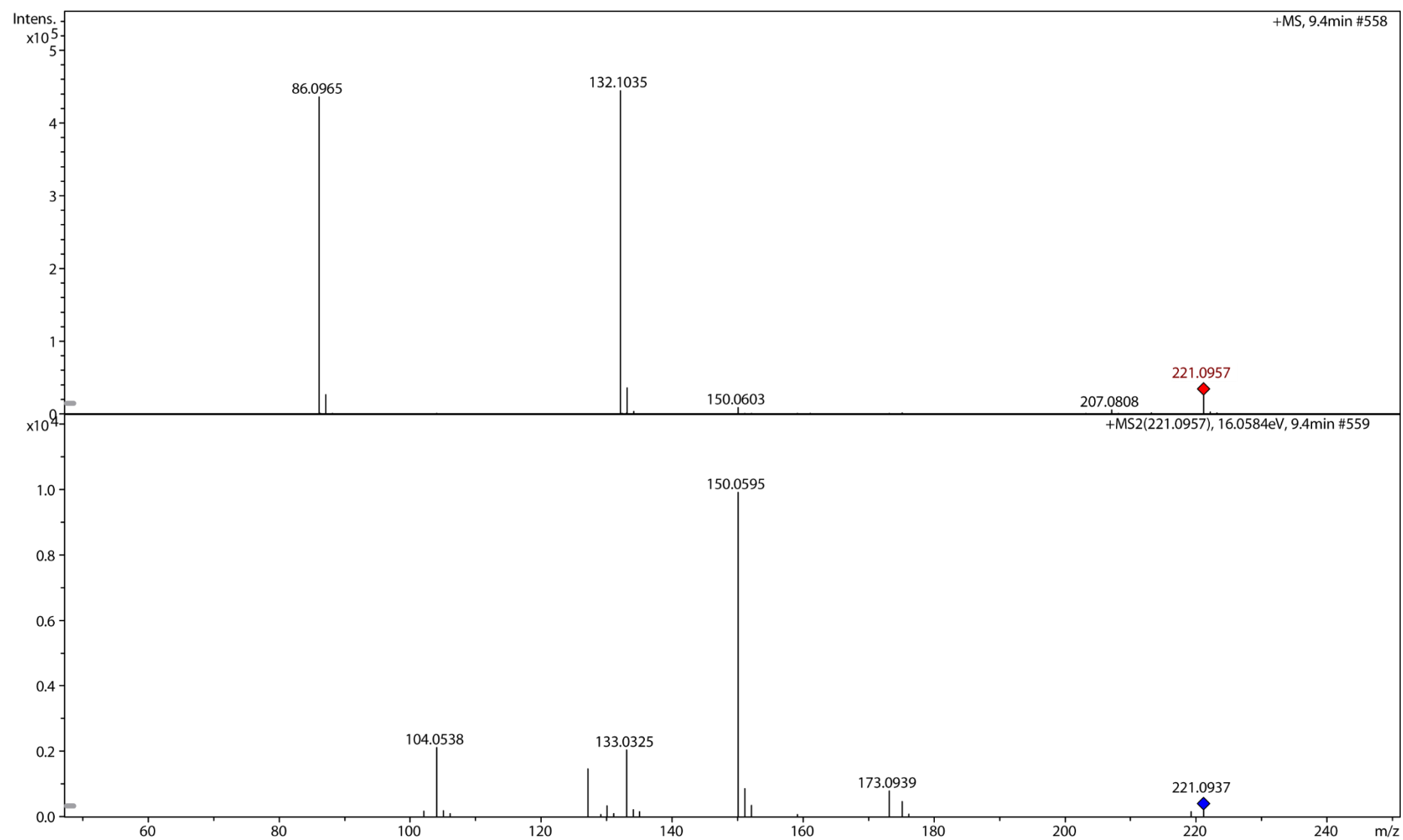


Figure S5. MS (top) and MS/MS (bottom) spectra of the peptide eluted as peak 4.

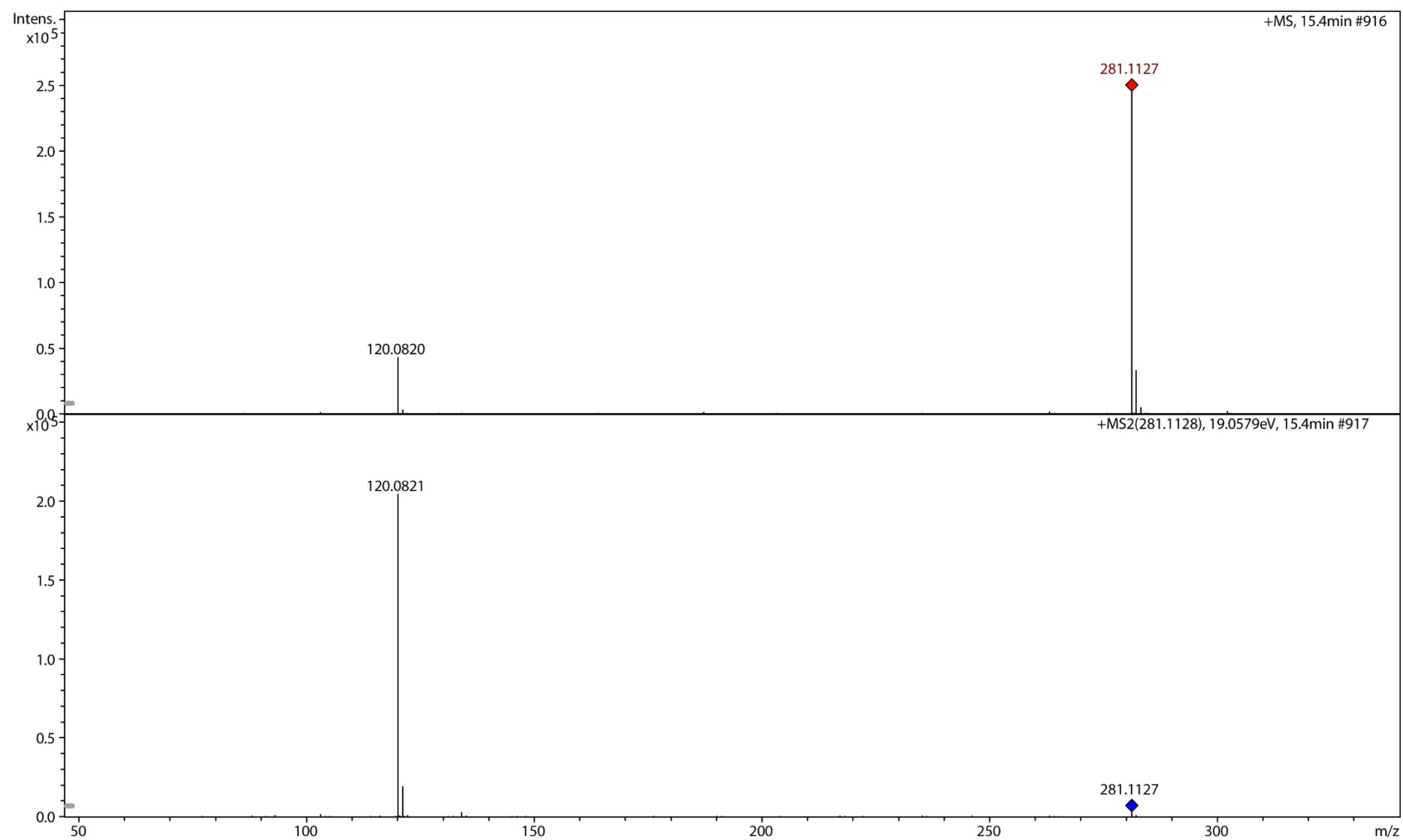


Figure S6. MS (top) and MS/MS (bottom) spectra of the peptide eluted as peak 5.

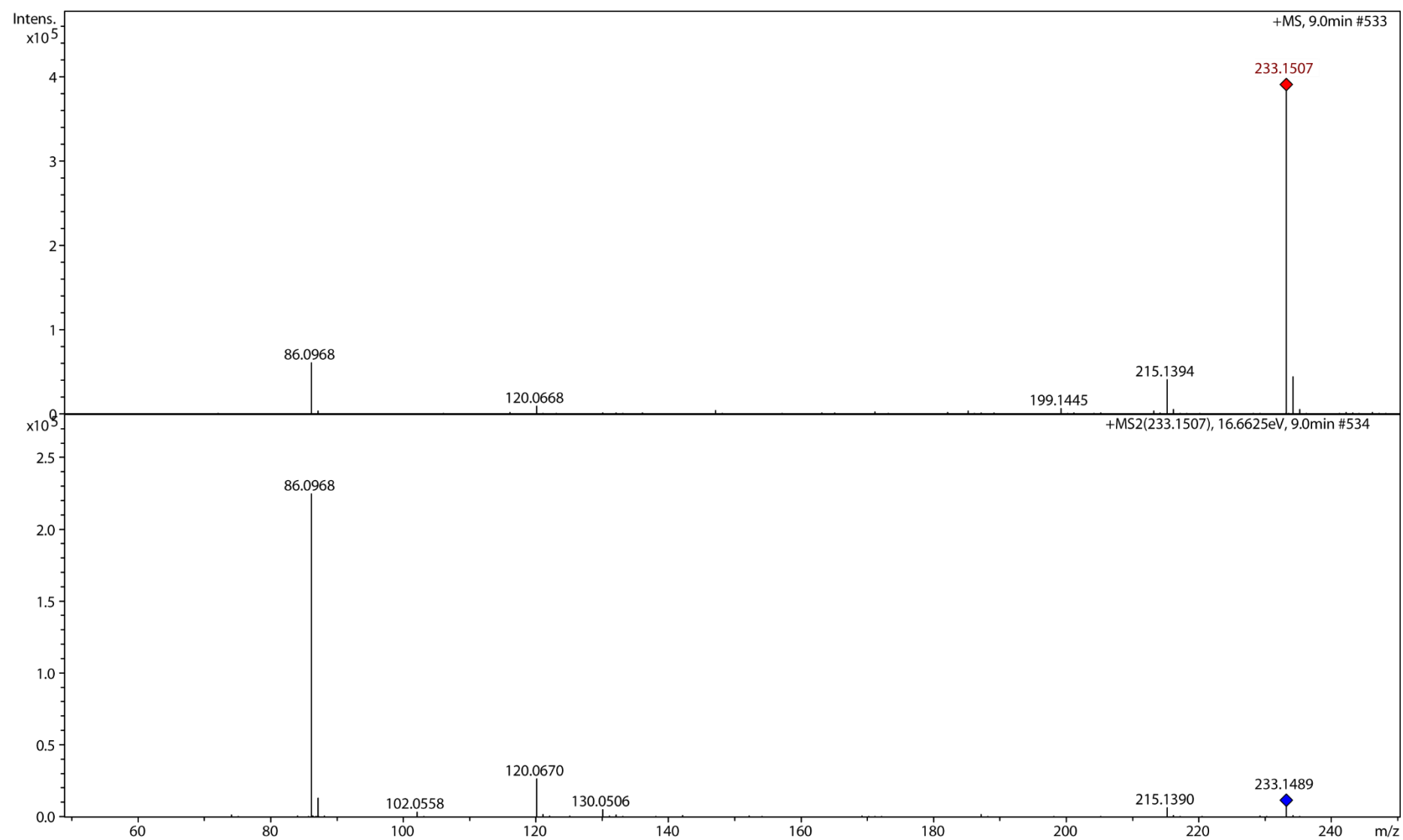


Figure S7. MS (top) and MS/MS (bottom) spectra of the peptide eluted as peak 6.

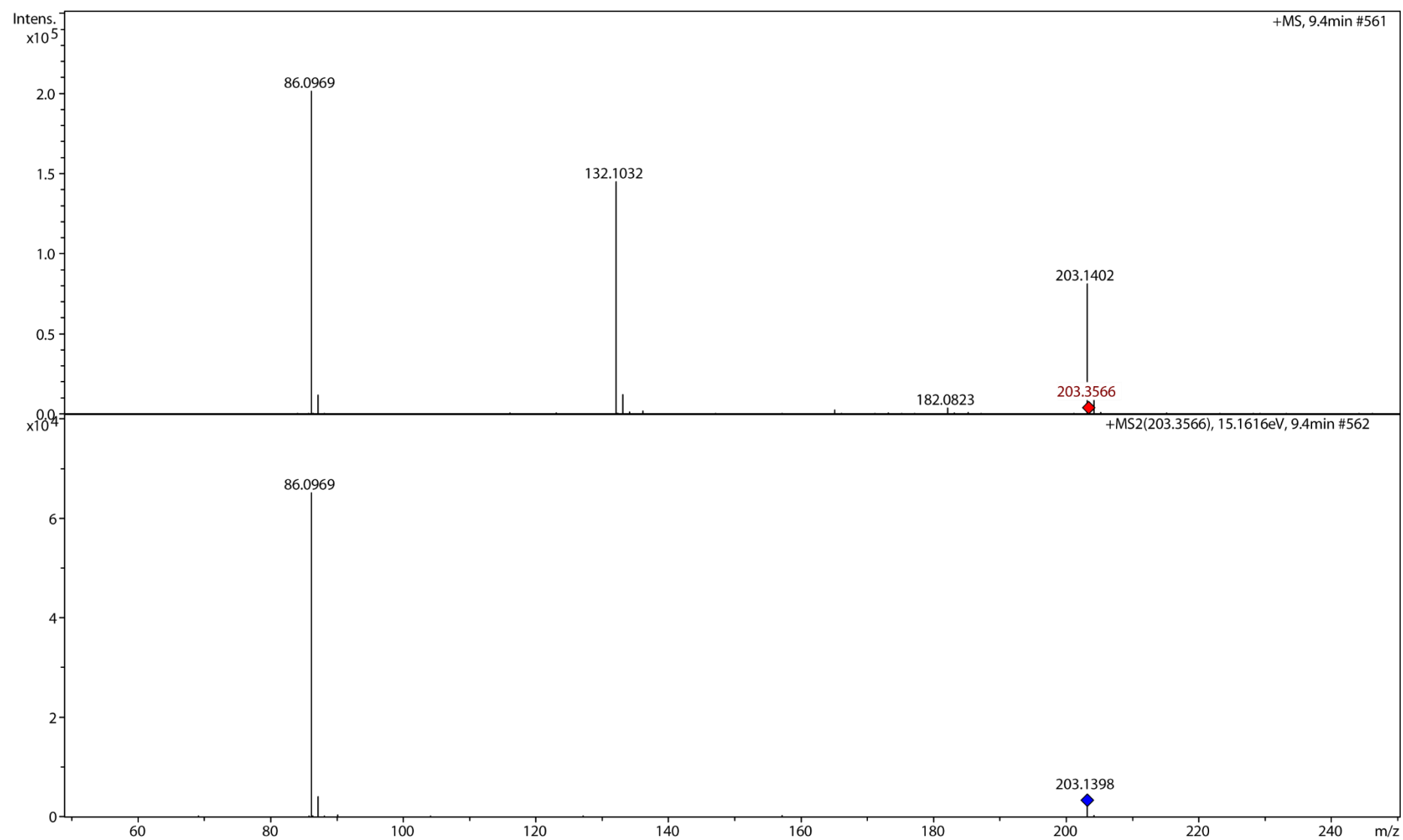


Figure S8. MS (top) and MS/MS (bottom) spectra of the peptide eluted as peak 7.

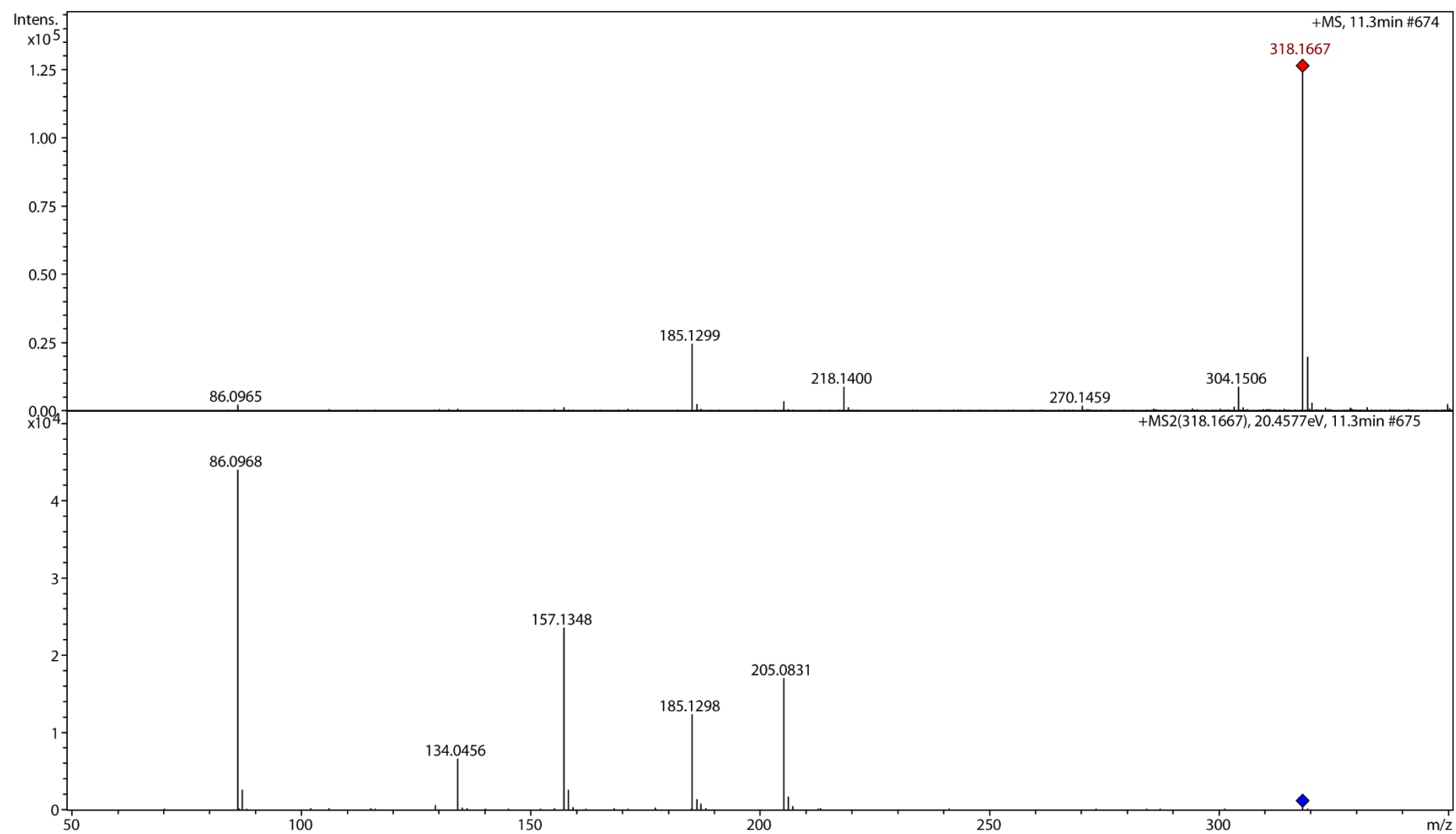


Figure S9. MS (top) and MS/MS (bottom) spectra of the peptide eluted as peak 8.

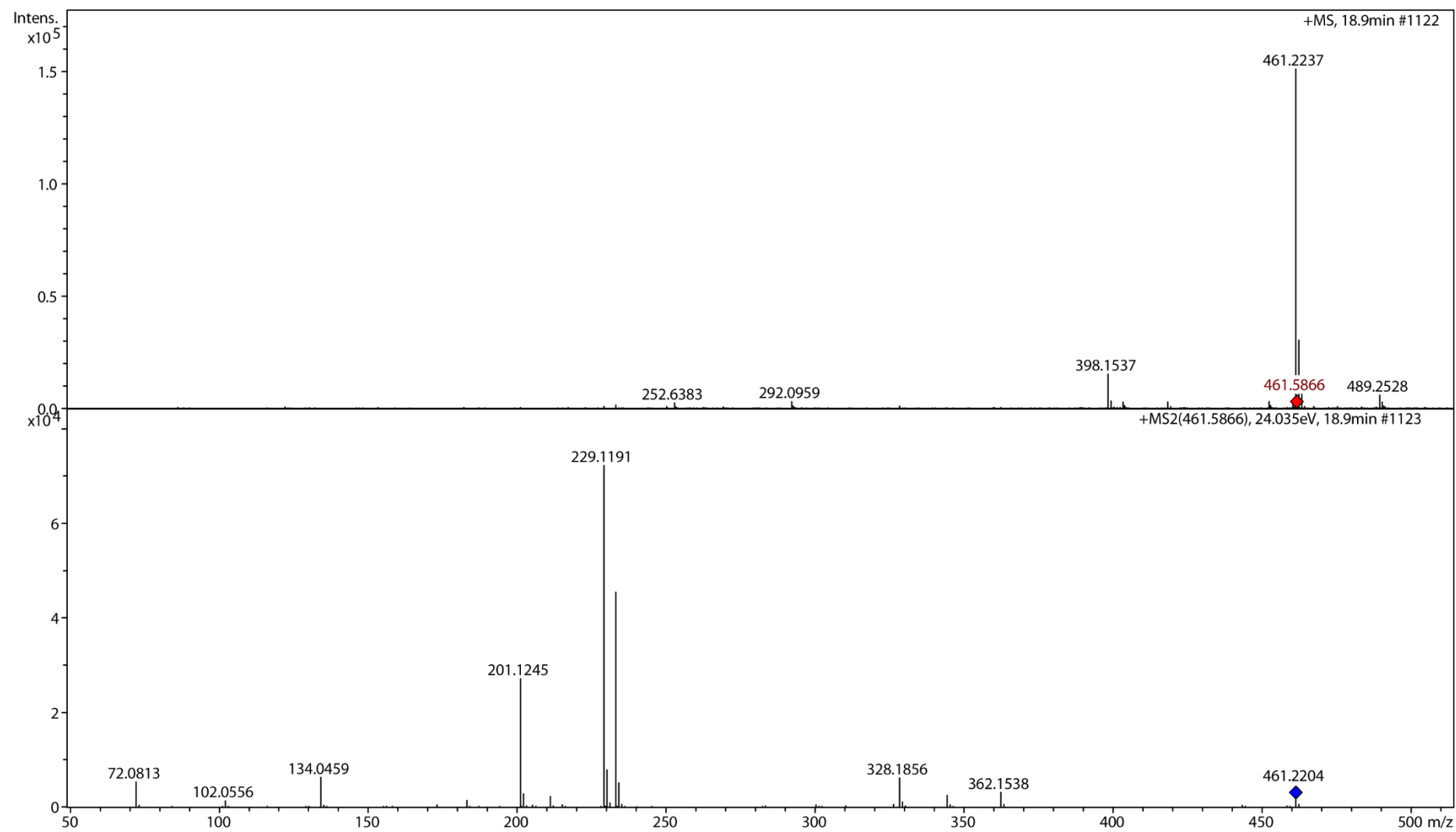


Figure S10. MS (top) and MS/MS (bottom) spectra of the peptide eluted as peak 9.

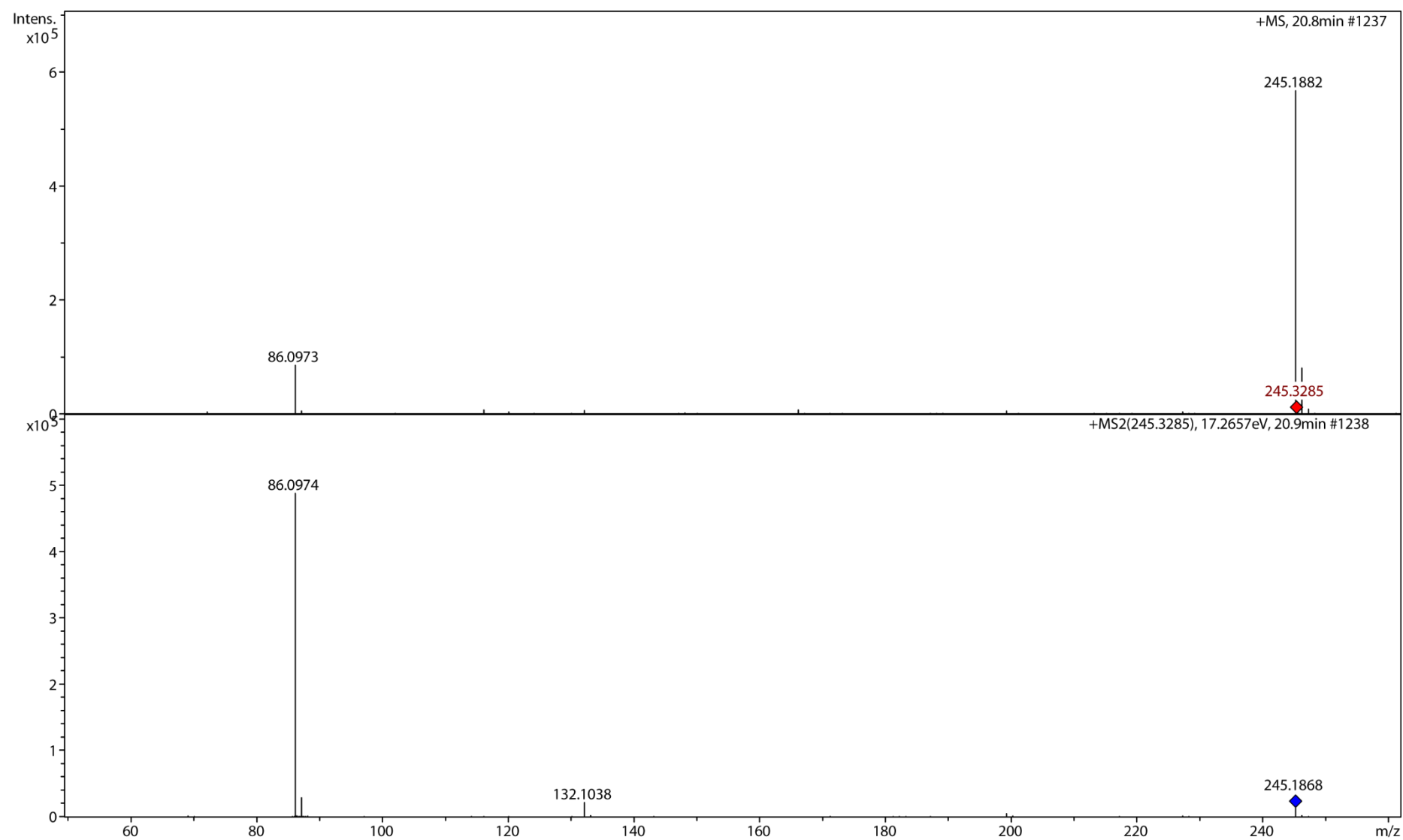


Figure S11. MS (top) and MS/MS (bottom) spectra of the peptide eluted as peak 10.

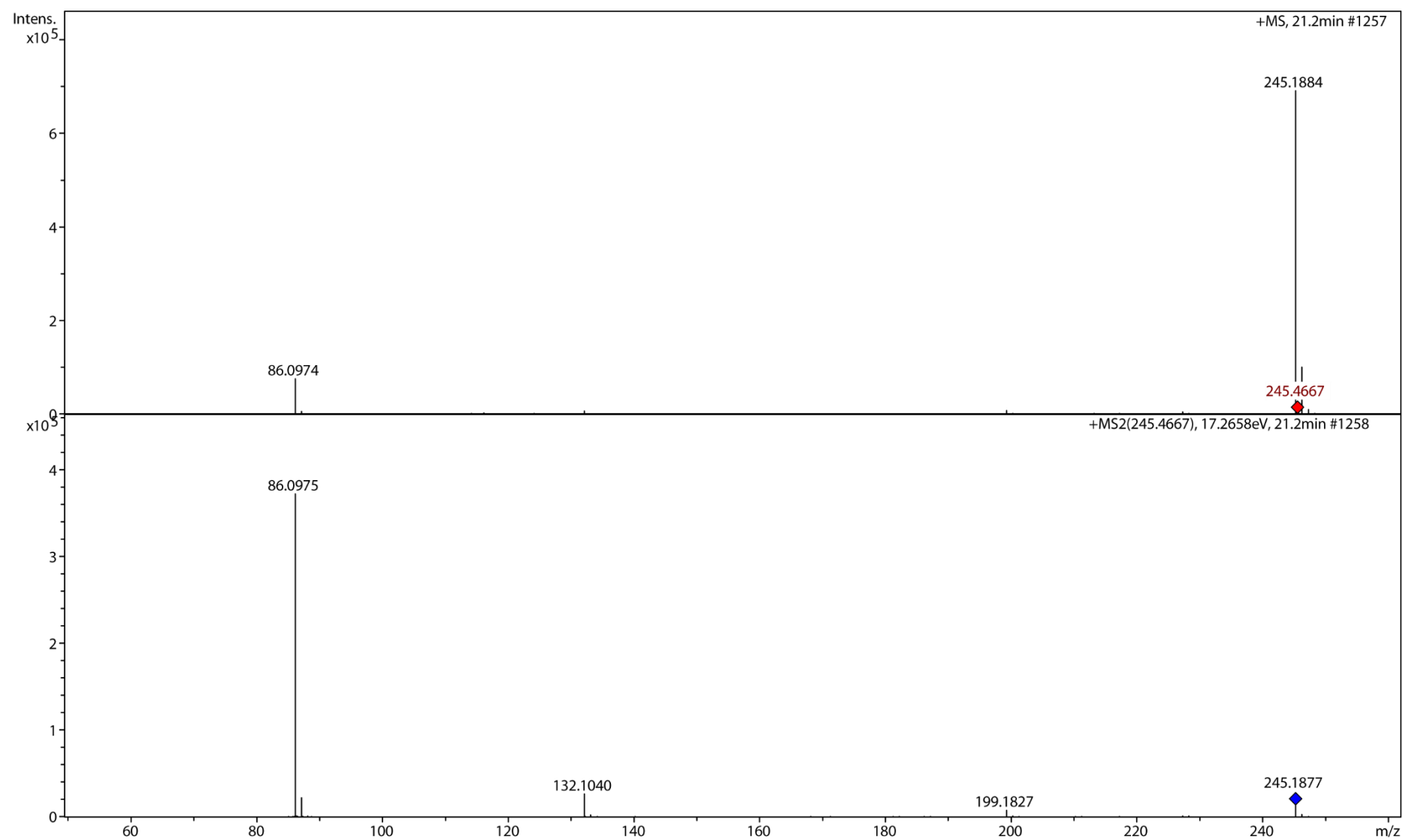


Figure S12. MS (top) and MS/MS (bottom) spectra of the peptide eluted as peak 11.

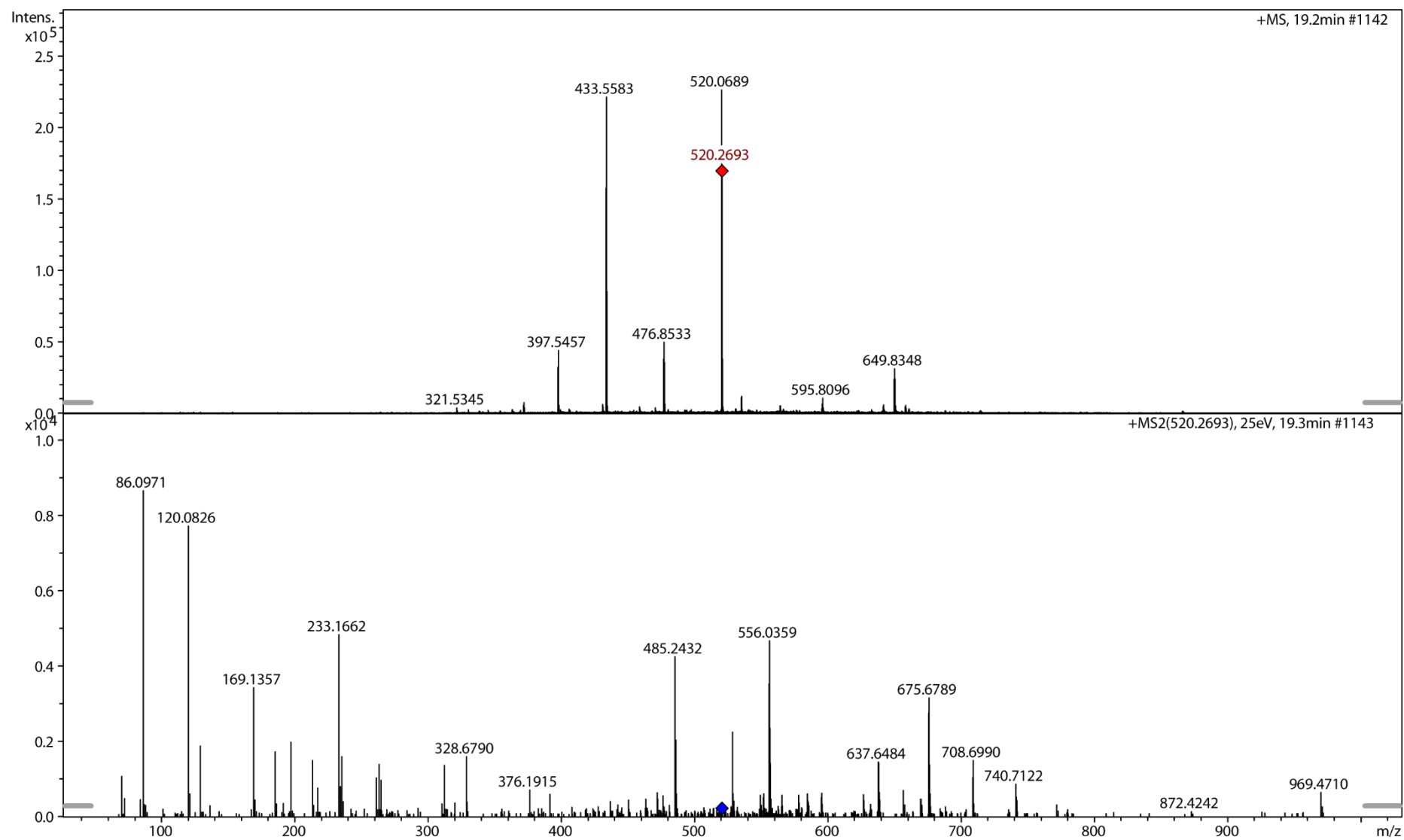


Figure S13. MS (top) and MS/MS (bottom) spectra of the peptide eluted as peak 12.

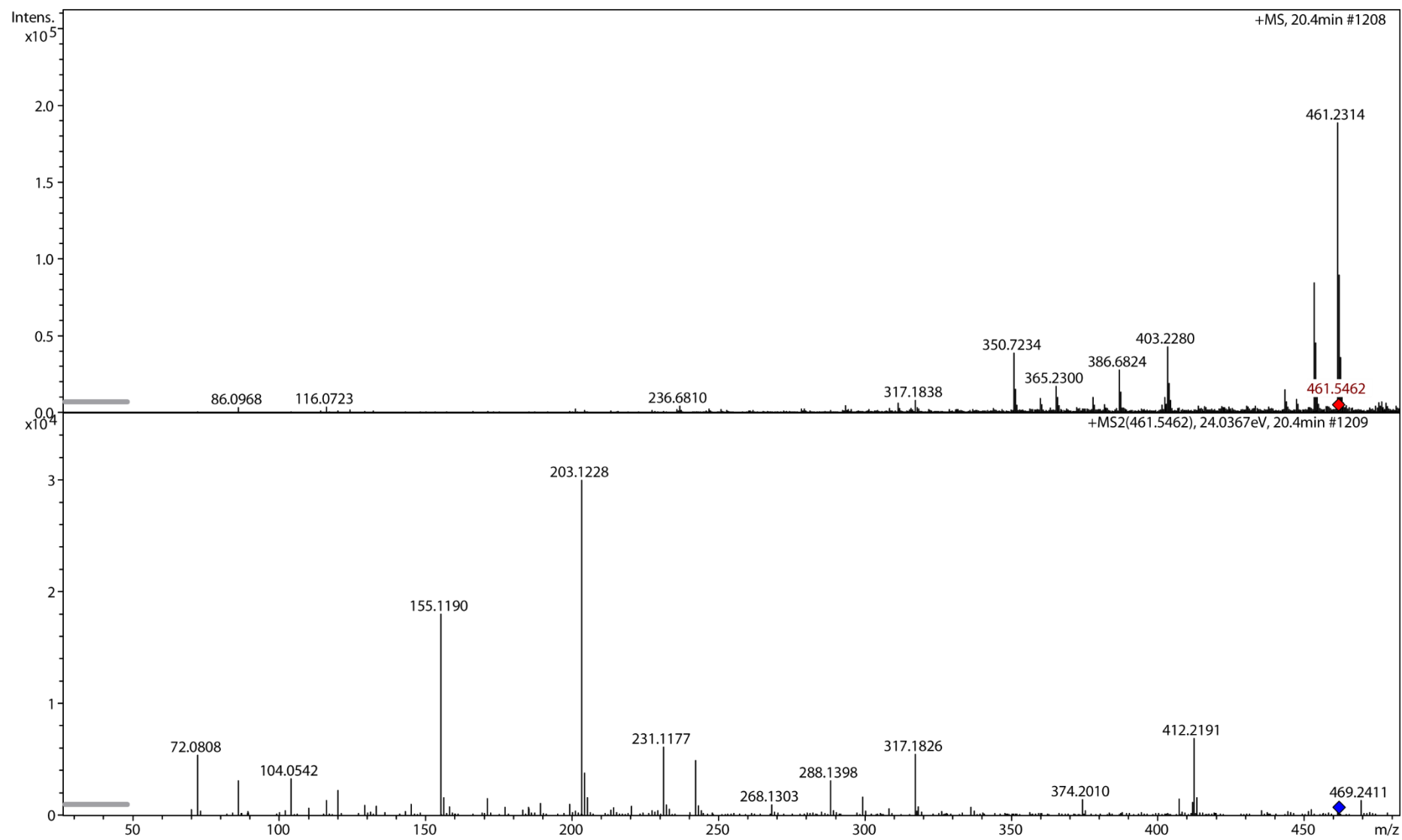


Figure S14. MS (top) and MS/MS (bottom) spectra of the peptide eluted as peak 13.

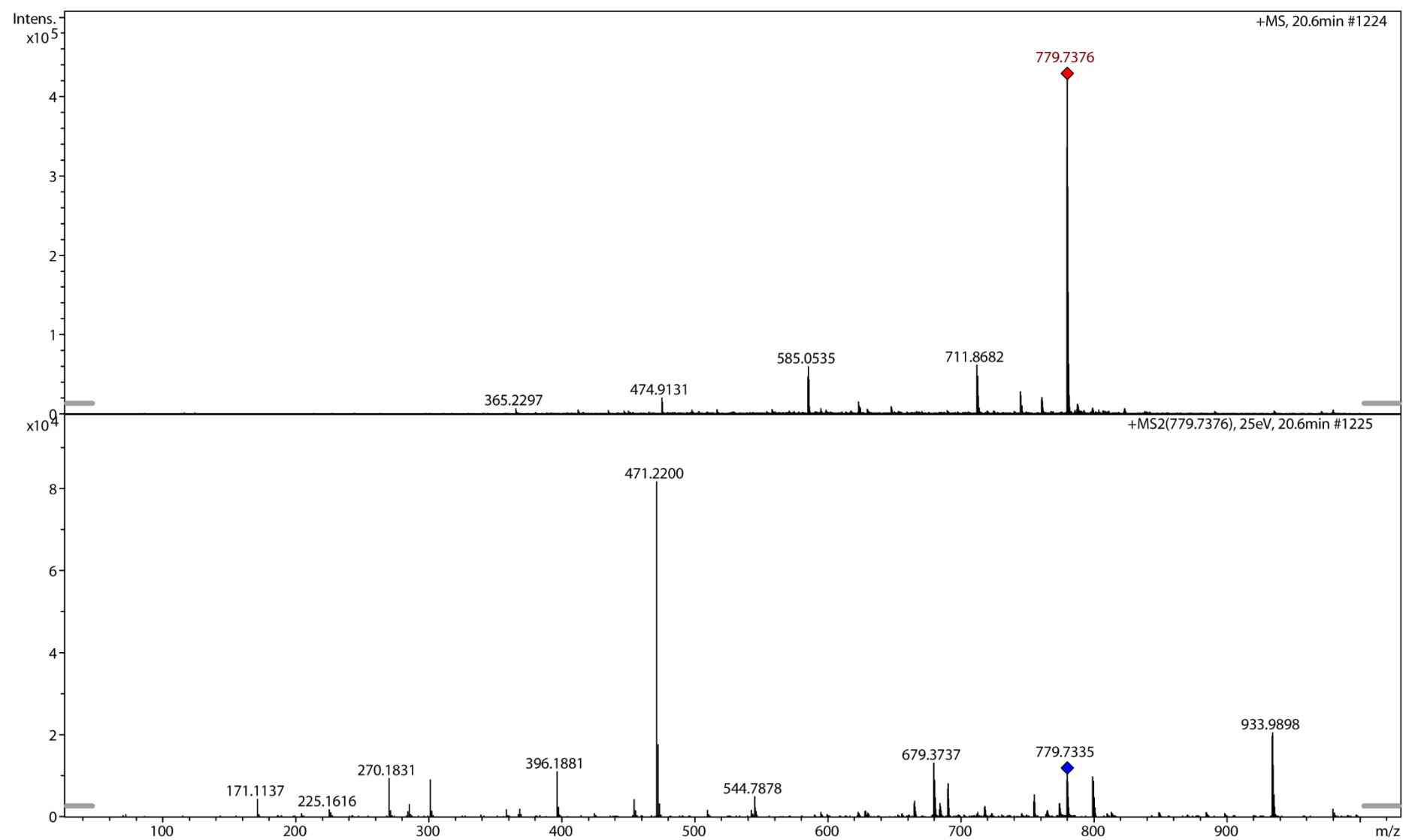


Figure S15. MS (top) and MS/MS (bottom) spectra of the peptide eluted as peak 14.

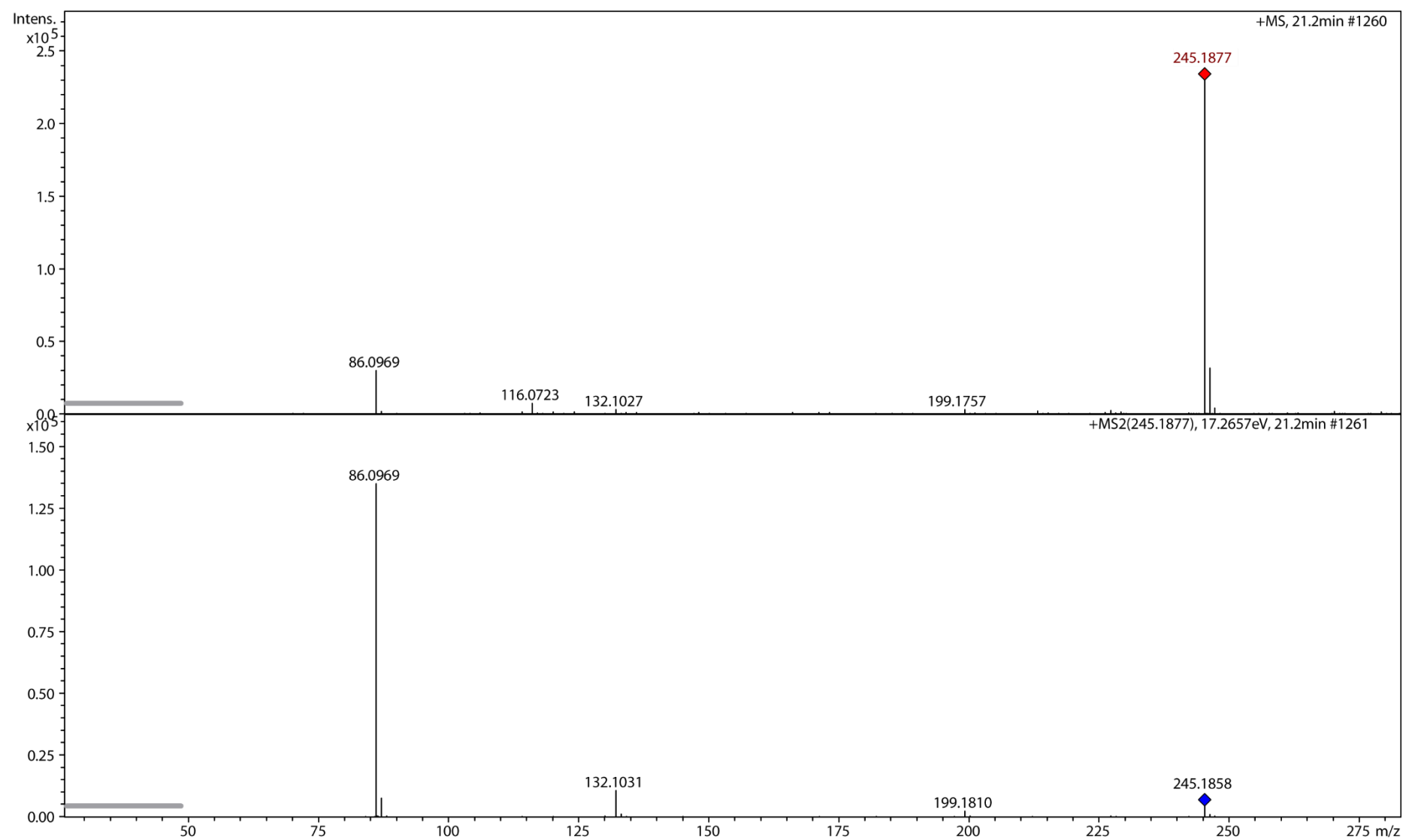


Figure S16. MS (top) and MS/MS (bottom) spectra of the peptide eluted as peak 15.

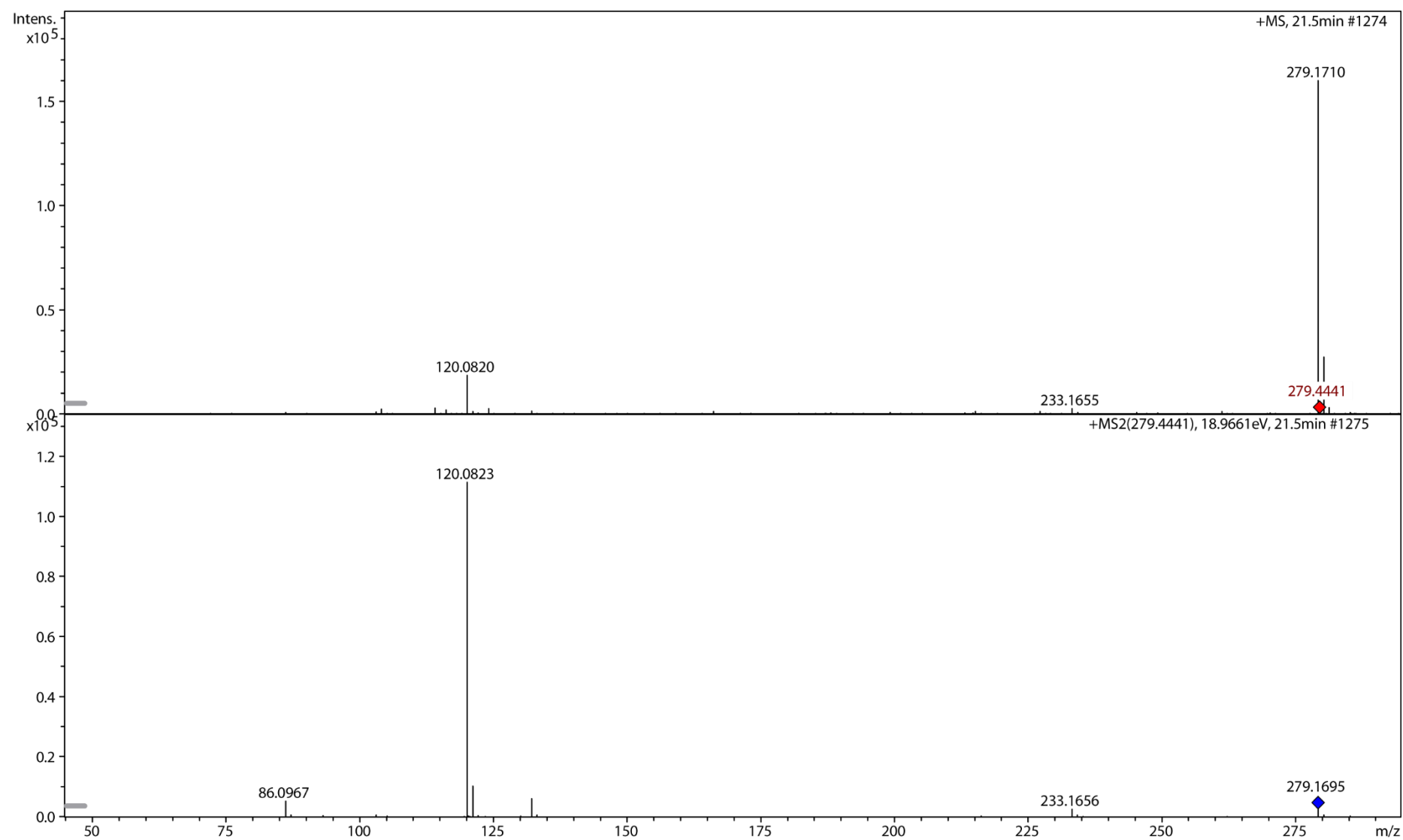


Figure S17. MS (top) and MS/MS (bottom) spectra of the peptide eluted as peak 16.

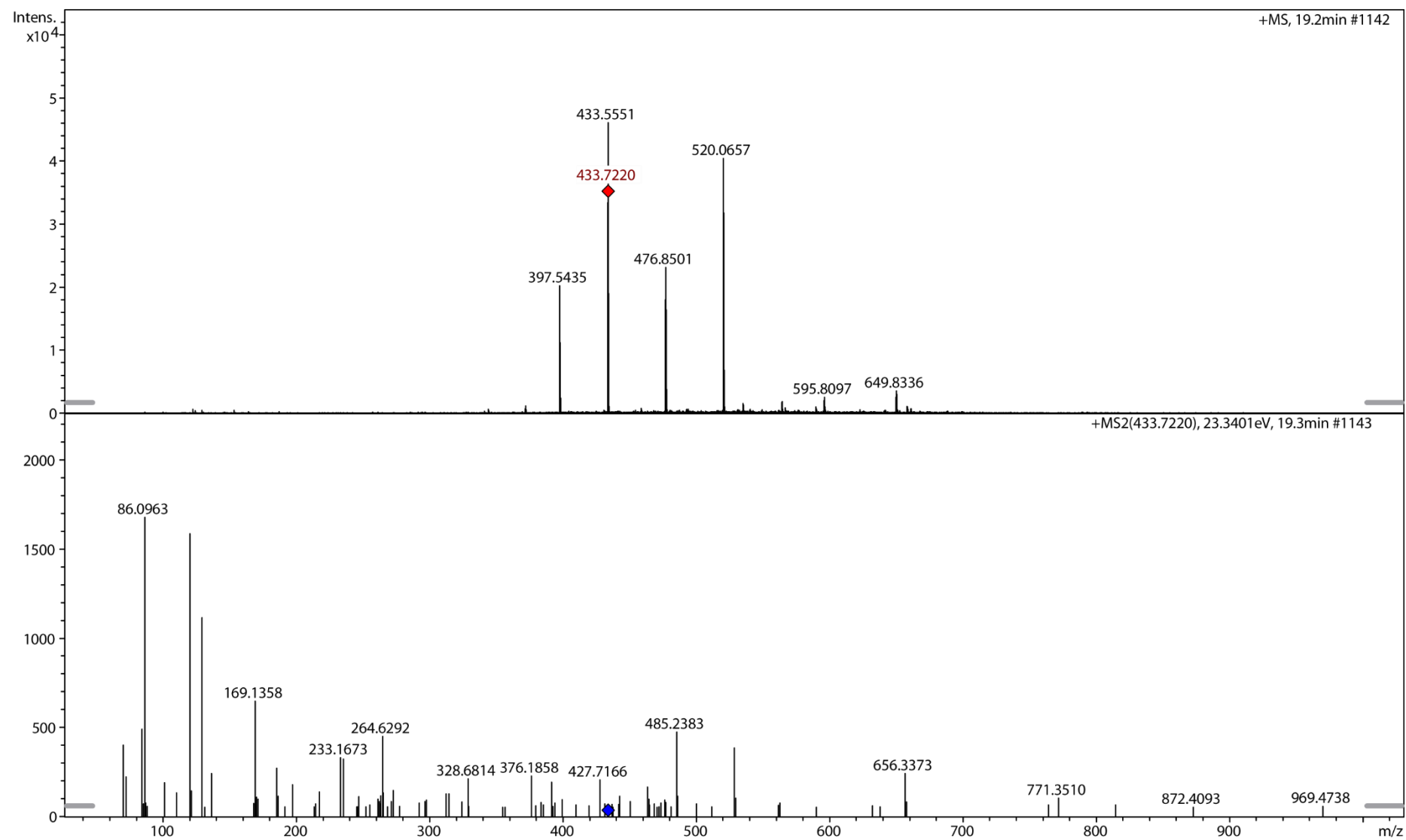


Figure S18. MS (top) and MS/MS (bottom) spectra of the peptide eluted as peak 17.

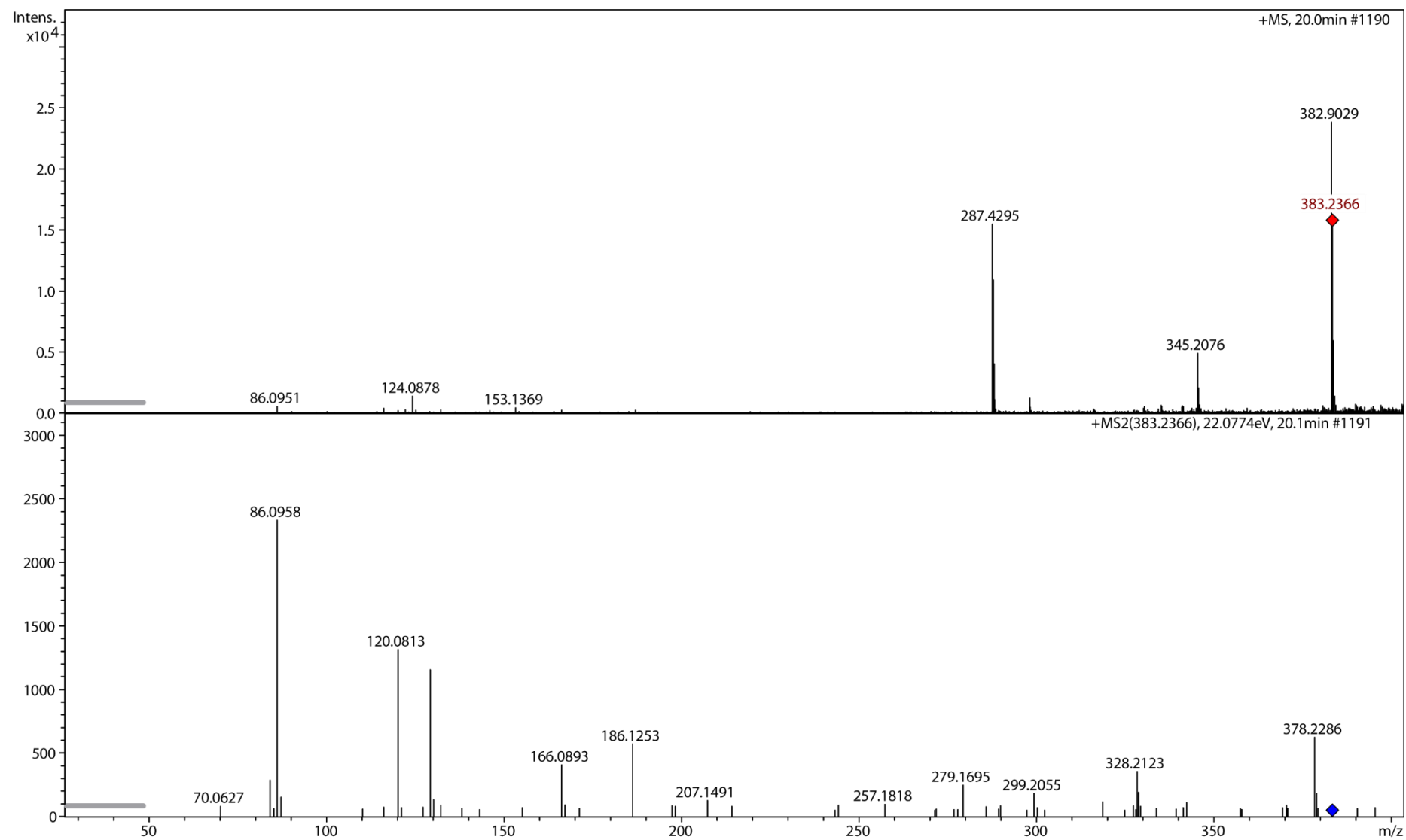


Figure S19. MS (top) and MS/MS (bottom) spectra of the peptide eluted as peak 18.

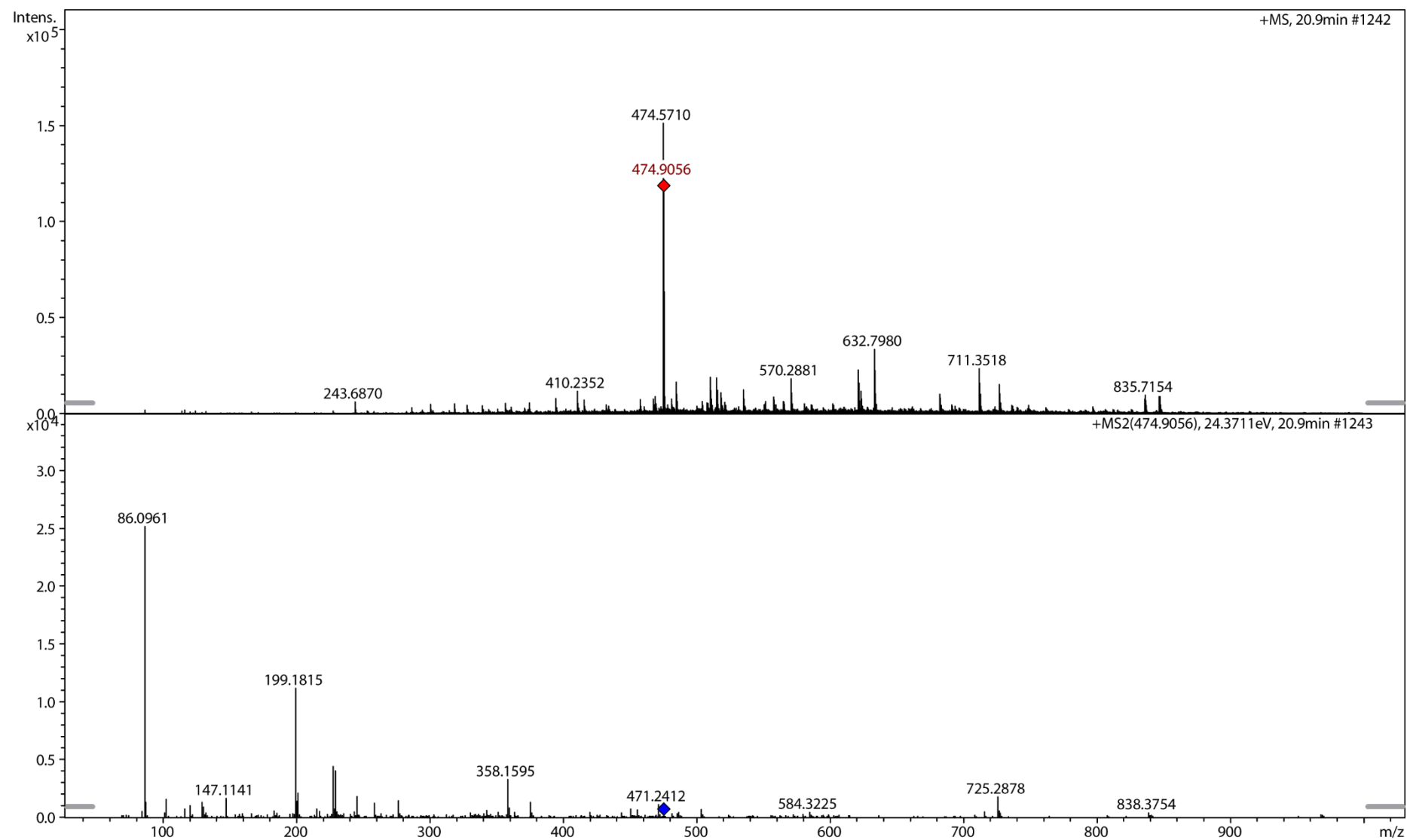


Figure S20. MS (top) and MS/MS (bottom) spectra of the peptide eluted as peak 19.

