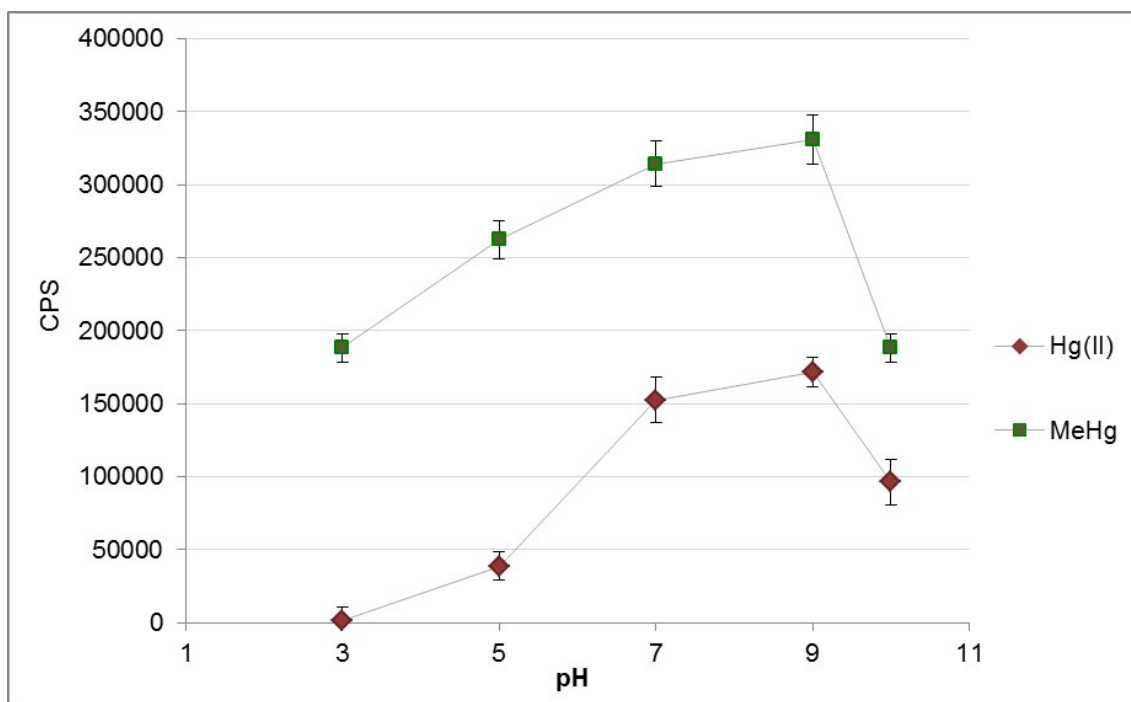
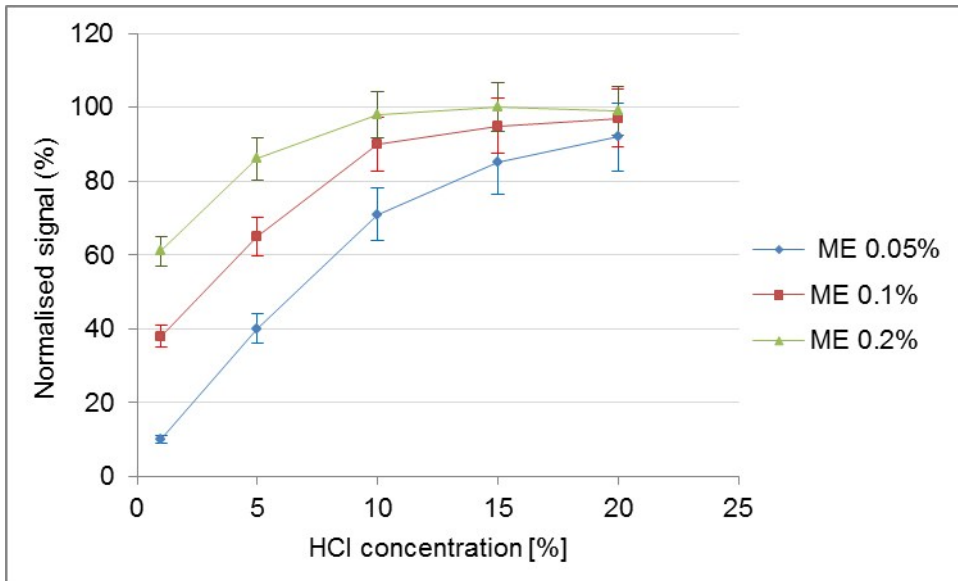


### Supplementary Information



**Fig. S1. Effect of sample pH on Hg(II) and MeHg signal by off-line SPE. Eluent: 10% HCl; determinations by ICP-MS**  
**Error bars express standard deviation of measurements**



**Fig. S2: Effect of different eluent concentrations on Hg(II) and MeHg signal (normalised signal).**