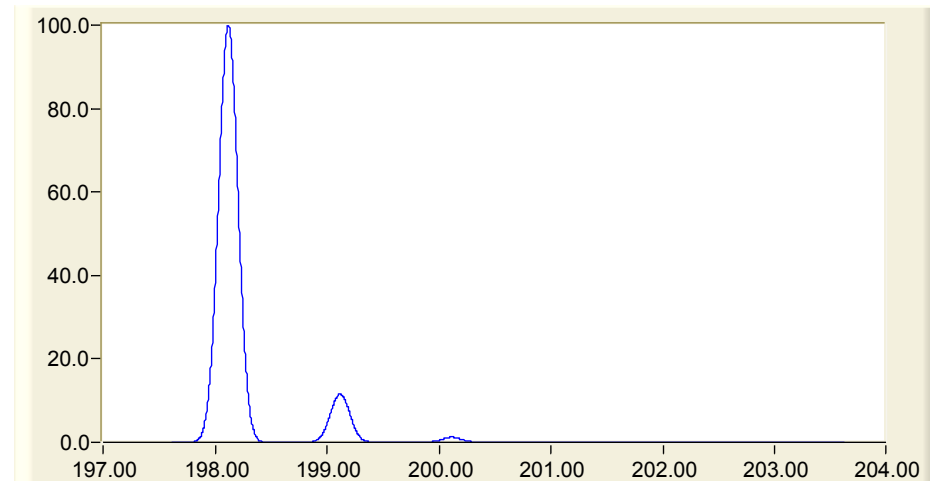
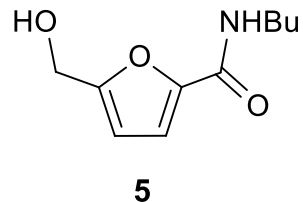
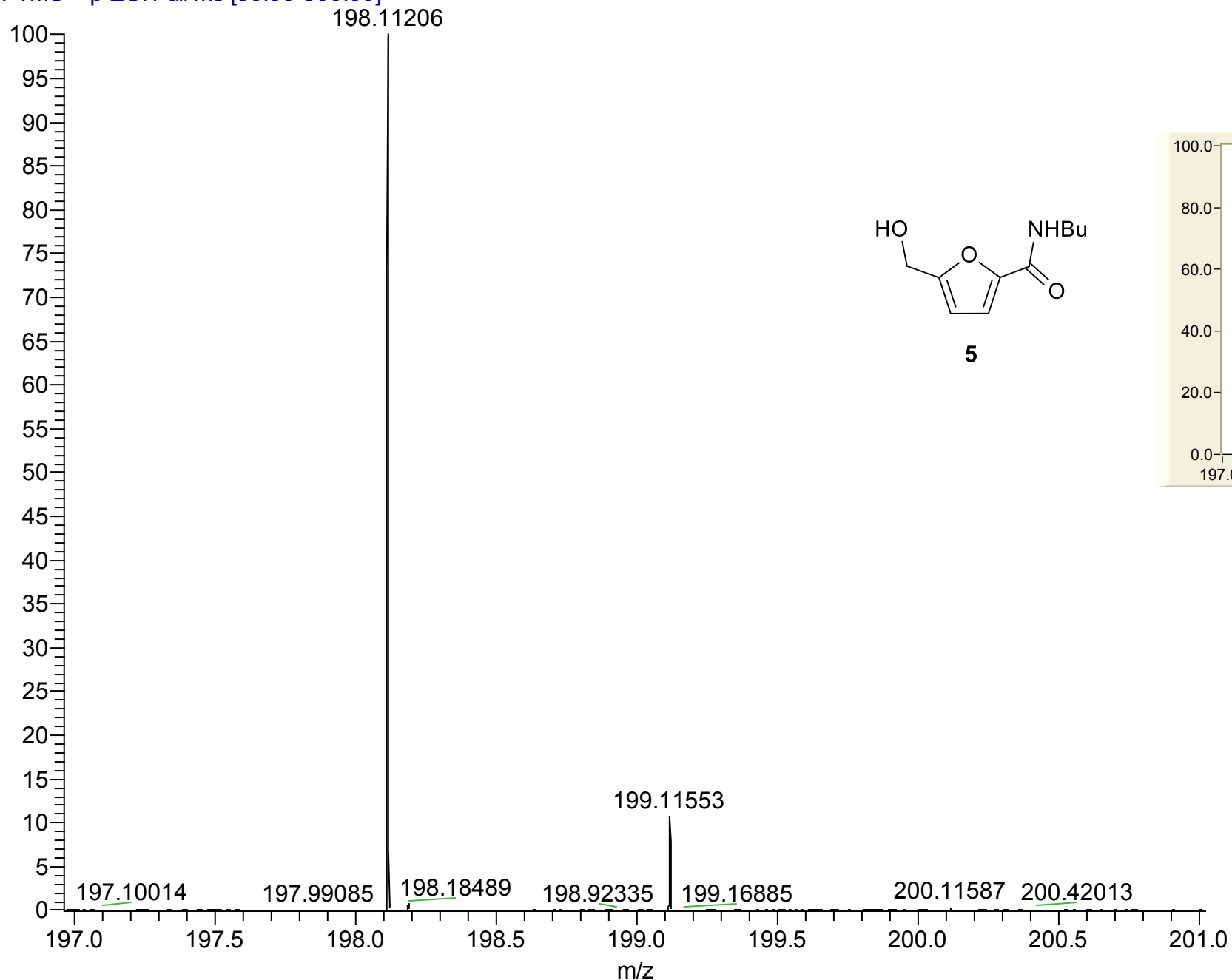


Isotopic Abundances for C₇H₈O₄

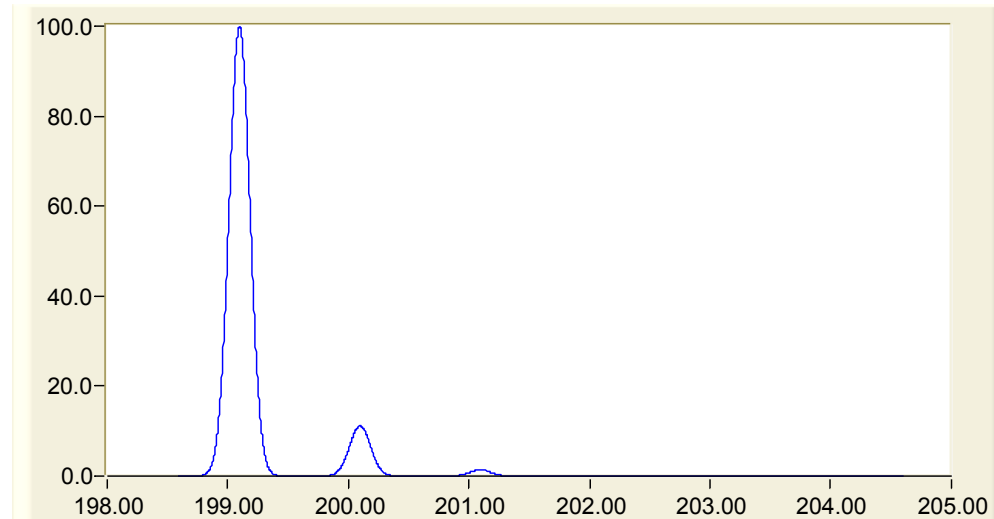
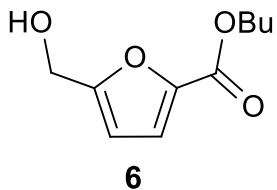
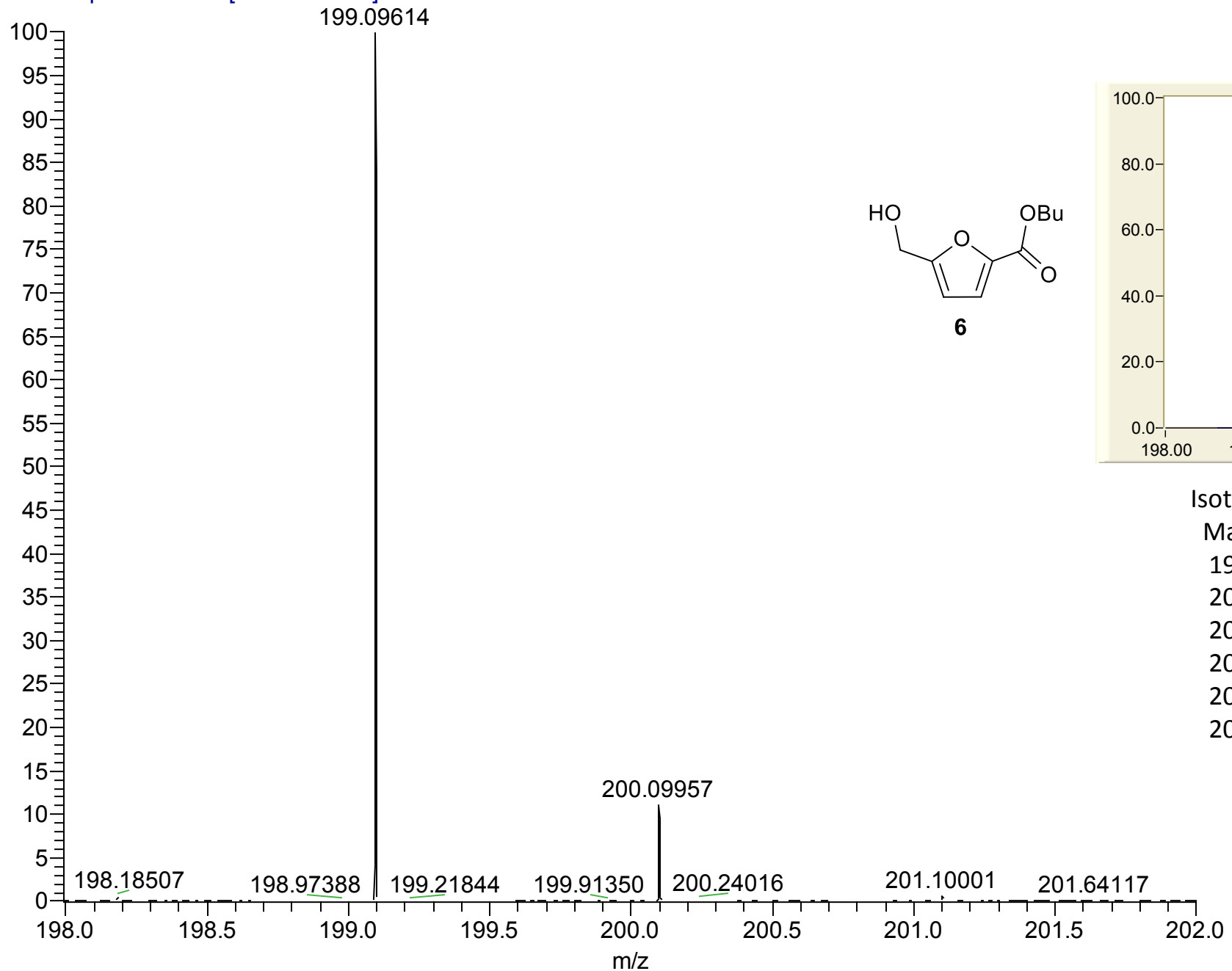
Mass/Charge	Fraction	Intensity
157.04954	0.9173779	100.00
158.04954	0.0719536	7.84
159.04954	0.0099881	1.09
160.04954	0.0006357	0.07
161.04954	0.0000433	0.00
162.04954	0.0000022	0.00

T: FTMS + p ESI Full ms [50.00-500.00]



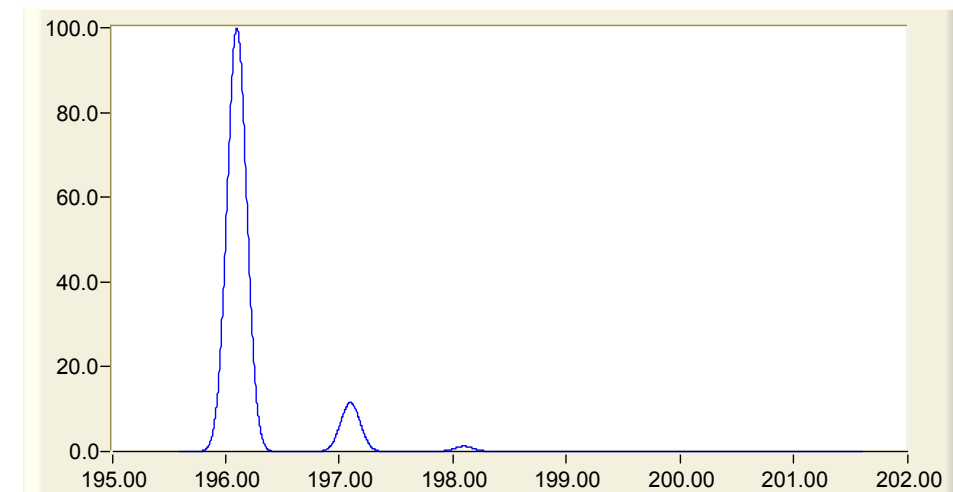
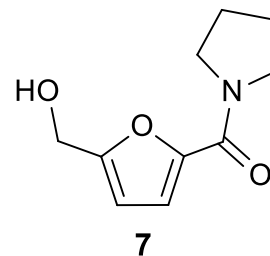
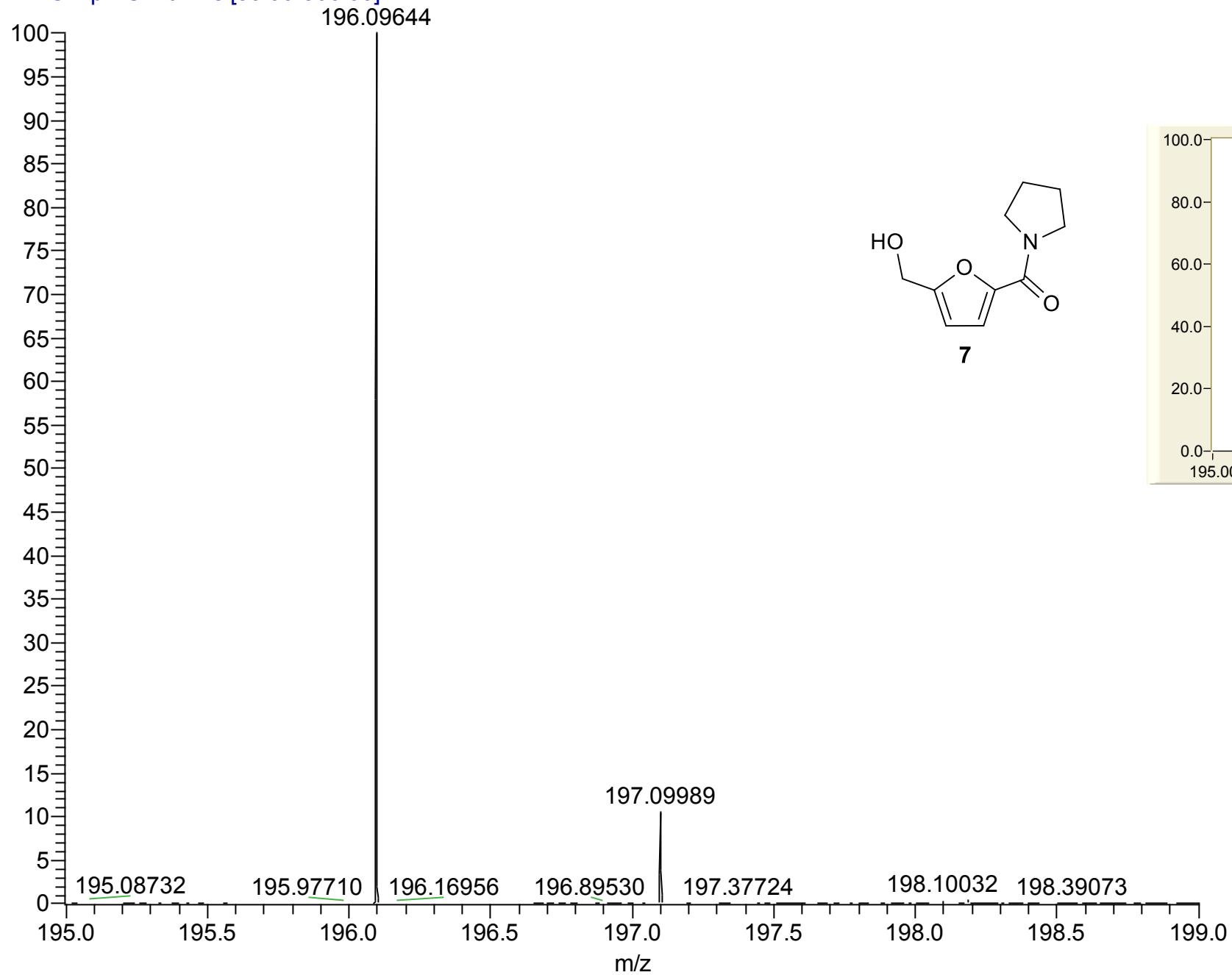
Isotopic Abundances for C₁₀H₁₅NO₃

Mass/Charge	Fraction	Intensity
198.11247	0.8862000	100.00
199.11247	0.1021292	11.52
200.11247	0.0108260	1.22
201.11247	0.0007972	0.09
202.11247	0.0000502	0.01
203.11247	0.0000024	0.00



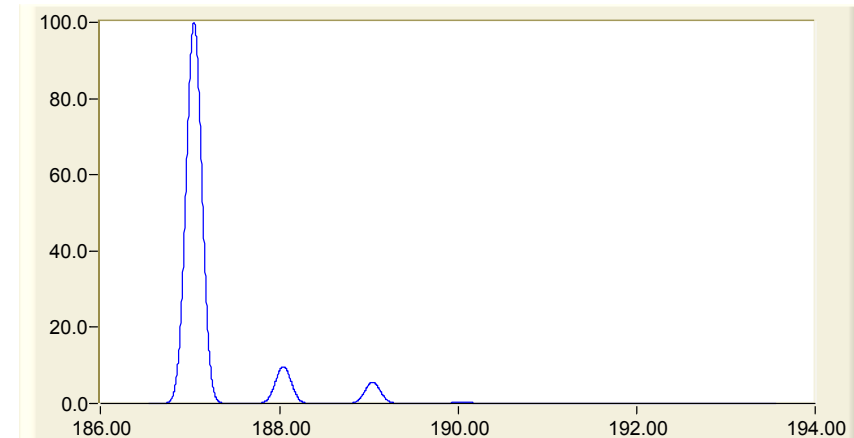
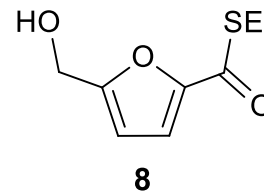
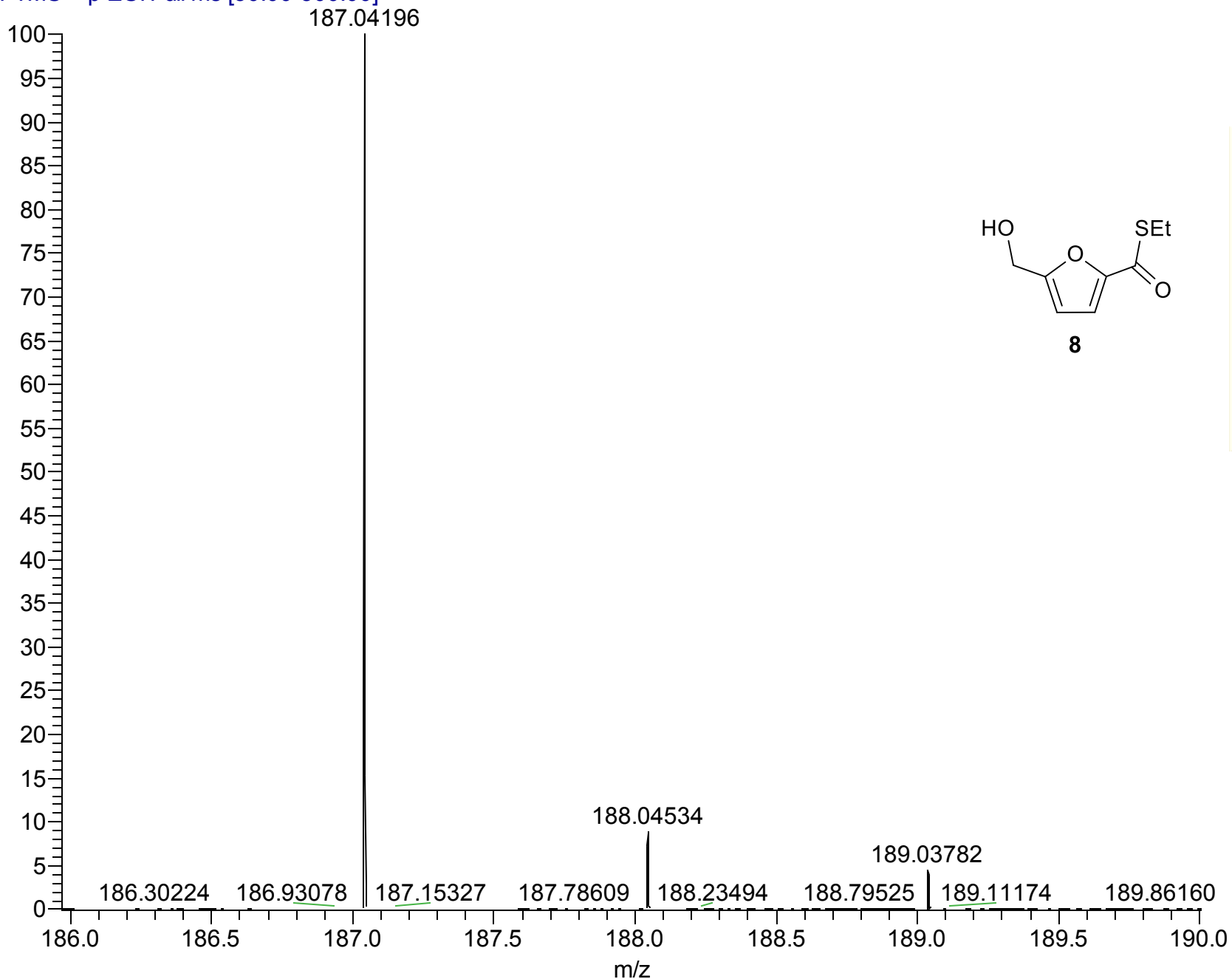
Isotopic Abundances for C₁₀H₁₄O₄

Mass/Charge	Fraction	Intensity
199.09648	0.8874449	100.00
200.09648	0.0991997	11.18
201.09648	0.0123222	1.39
202.09648	0.0009652	0.11
203.09648	0.0000691	0.01
204.09648	0.0000037	0.00



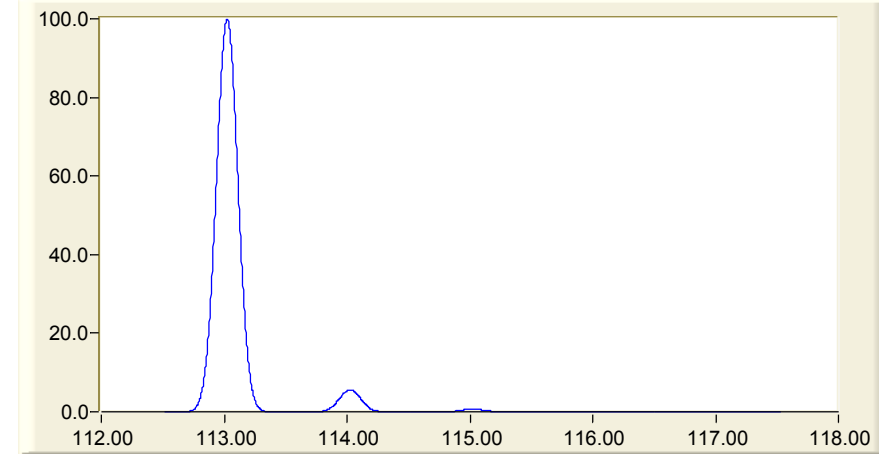
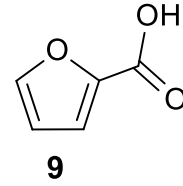
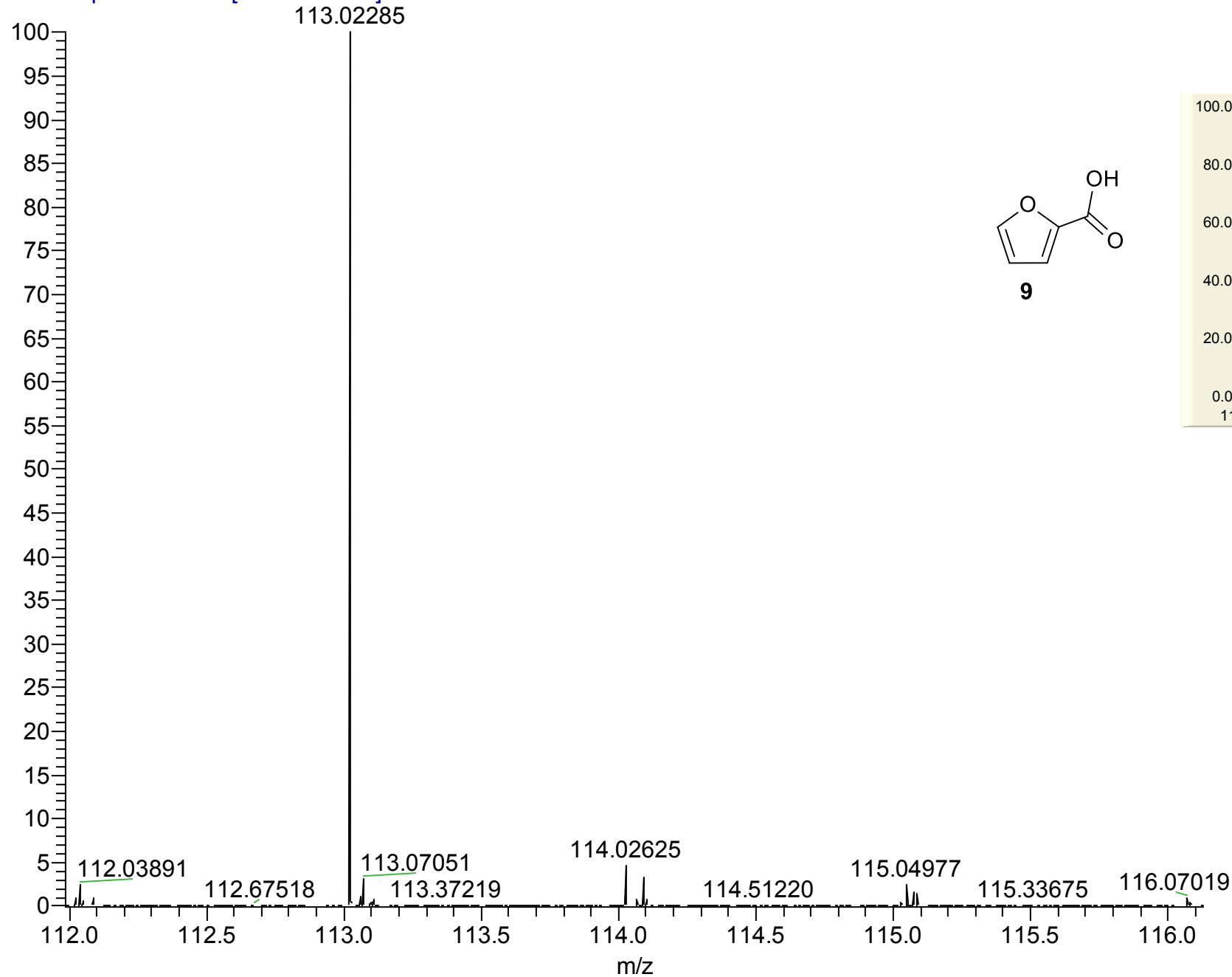
Isotopic Abundances for C₁₀H₁₃NO₃

Mass/Charge	Fraction	Intensity
196.09682	0.8864658	100.00
197.09682	0.1018939	11.49
198.09682	0.0107982	1.22
199.09682	0.0007941	0.09
200.09682	0.0000500	0.01
201.09682	0.0000023	0.00



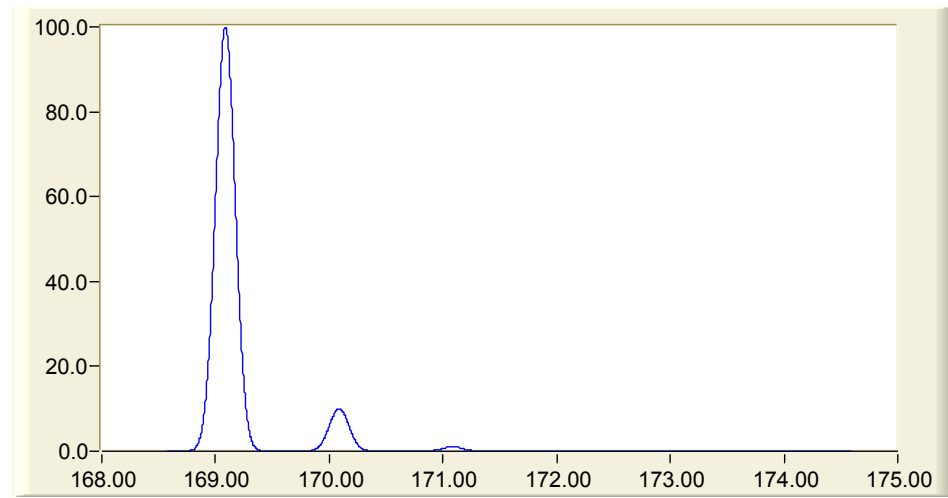
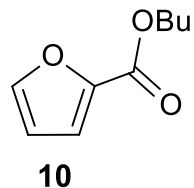
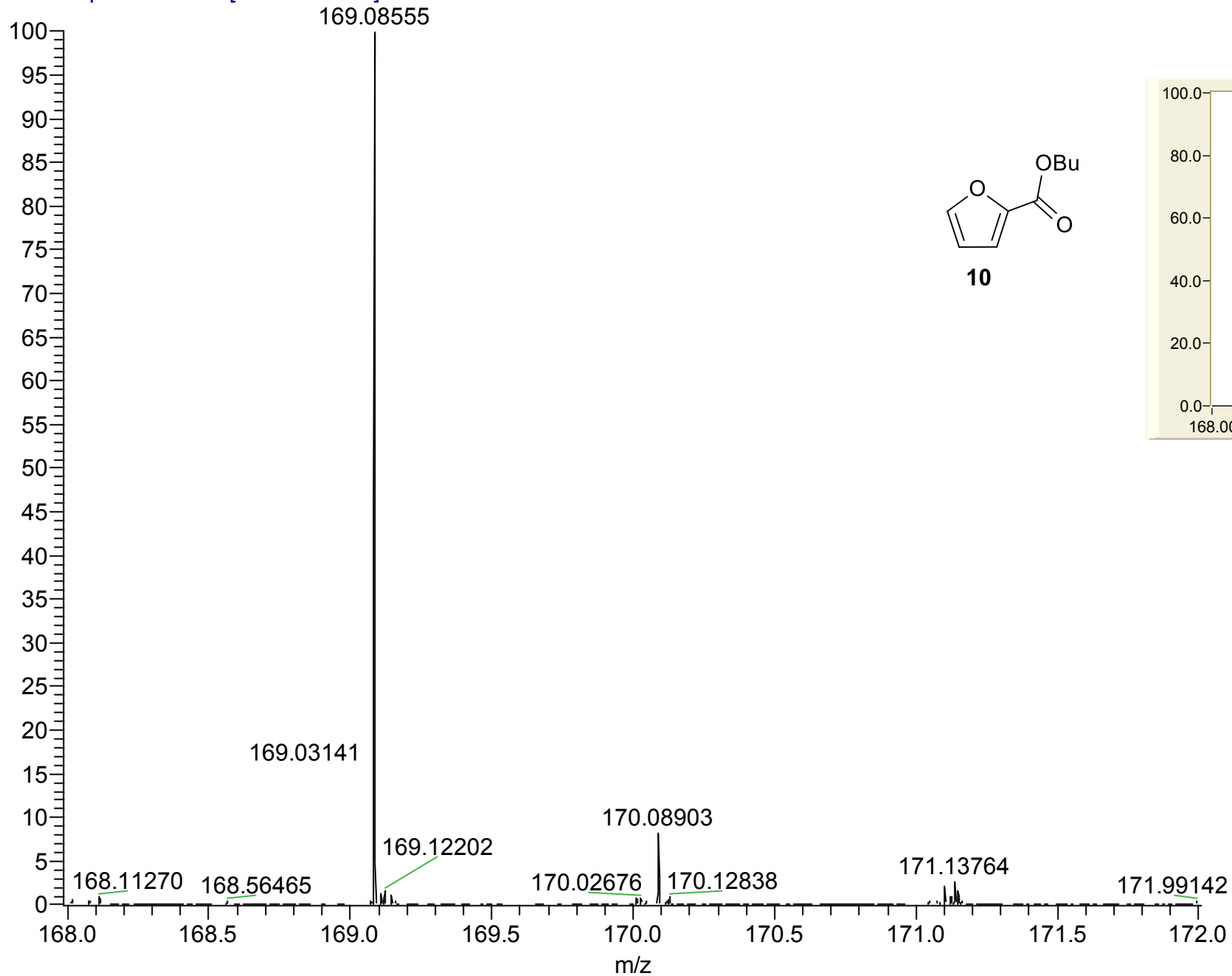
Isotopic Abundances for C₈H₁₀O₃S

Mass/Charge	Fraction	Intensity
187.04234	0.8633882	100.00
188.04234	0.0838995	9.72
189.04234	0.0479861	5.56
190.04234	0.0040876	0.47
191.04234	0.0005949	0.07
192.04234	0.0000423	0.00
193.04234	0.0000032	0.00



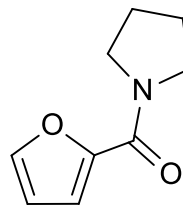
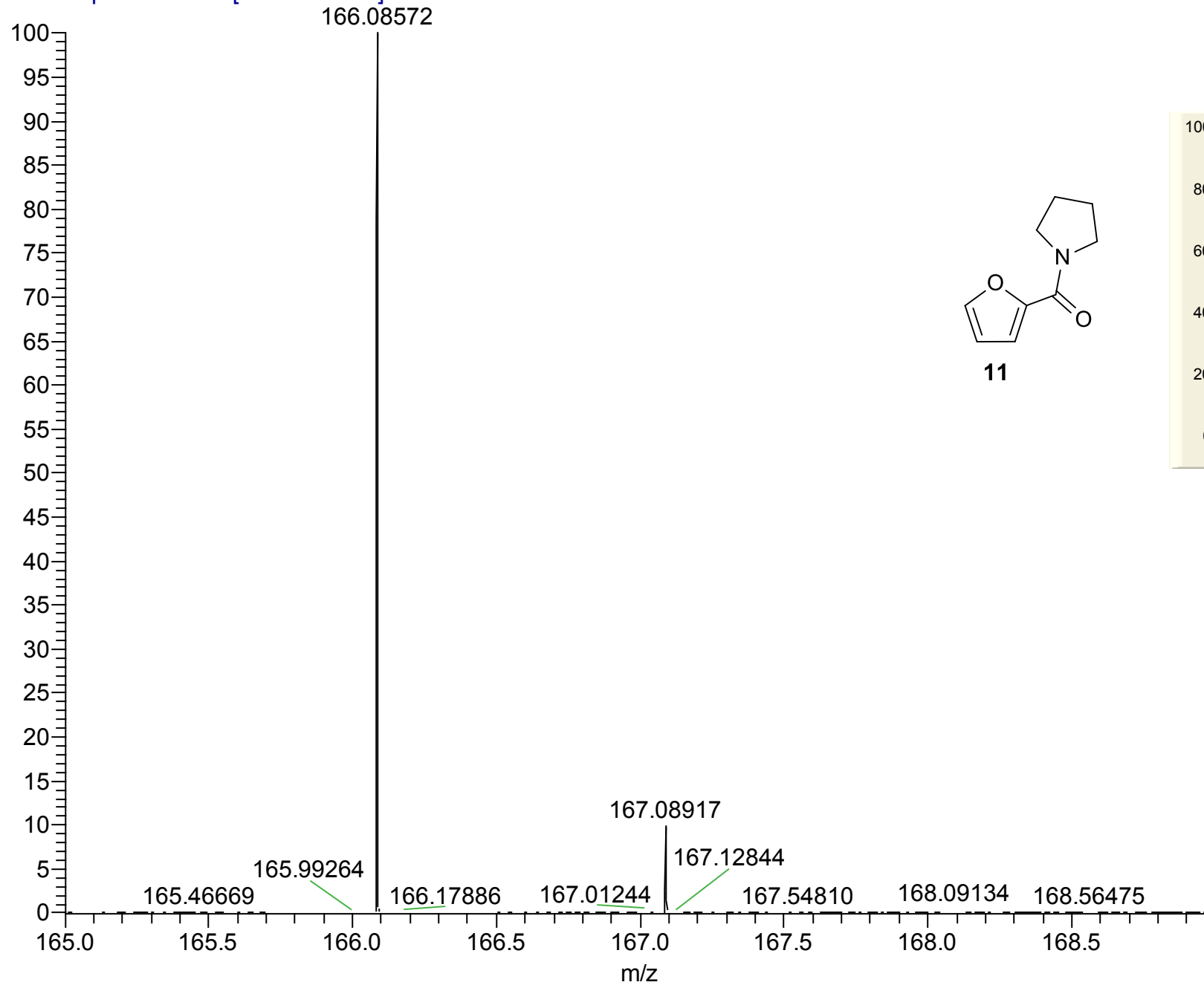
Isotopic Abundances for C5H4O3

Mass/Charge	Fraction	Intensity
113.02332	0.9401768	100.00
114.02332	0.0524821	5.58
115.02332	0.0069861	0.74
116.02332	0.0003352	0.04
117.02332	0.0000191	0.00

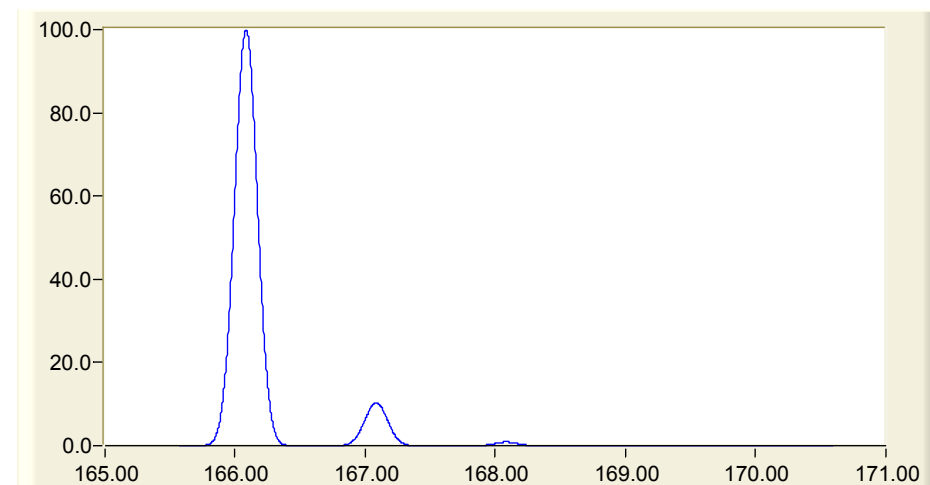


Isotopic Abundances for C₉H₁₂O₃

Mass/Charge	Fraction	Intensity
169.08592	0.8994982	100.00
170.08592	0.0902058	10.03
171.08592	0.0095964	1.07
172.08592	0.0006613	0.07
173.08592	0.0000396	0.00
174.08592	0.0000018	0.00



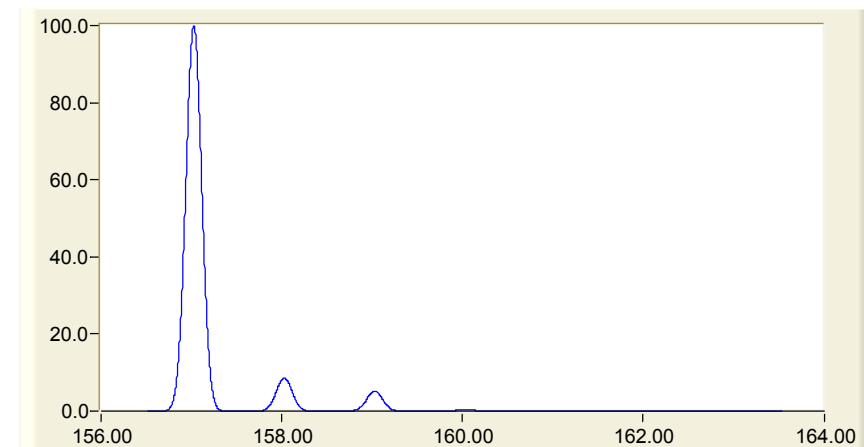
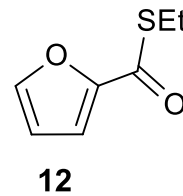
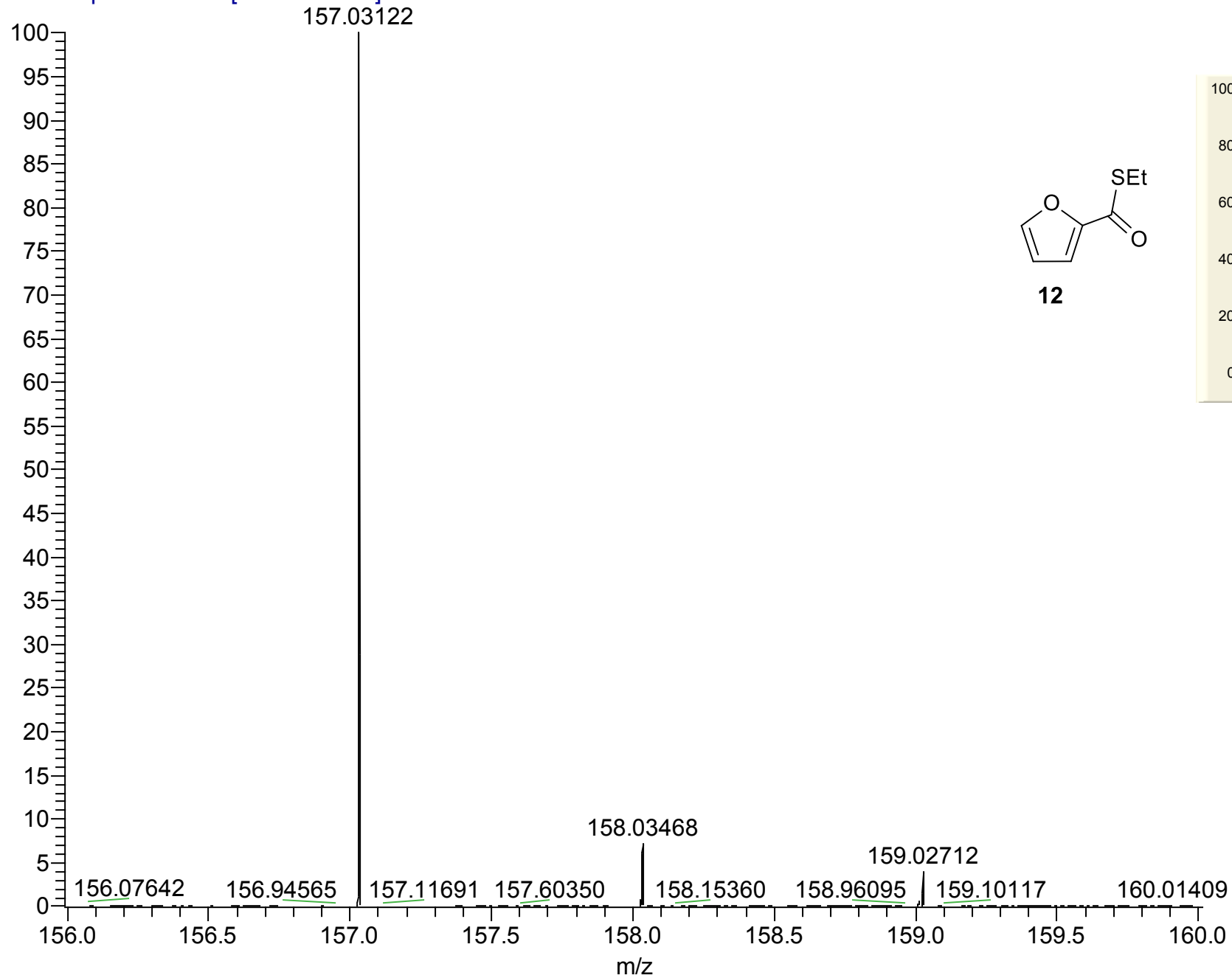
11



Isotopic Abundances for C₉H₁₁NO₂

Mass/Charge	Fraction	Intensity
166.08625	0.8985060	100.00
167.08625	0.0929480	10.34
168.08625	0.0080223	0.89
169.08625	0.0005004	0.06
170.08625	0.0000252	0.00

T: FTMS + p ESI Full ms [50.00-500.00]

Isotopic Abundances for C₇H₈O₂S

Mass/Charge	Fraction	Intensity
157.03178	0.8751148	100.00
158.03178	0.0749781	8.57
159.03178	0.0459703	5.25
160.03178	0.0034399	0.39
161.03178	0.0004657	0.05
162.03178	0.0000294	0.00
163.03178	0.0000018	0.00