

# Supplementary Materials

## Negative thermal expansion and electronic structure variation of chalcopyrite type LiGaTe<sub>2</sub>

V.V. Atuchin<sup>1,2</sup>, Fei Liang<sup>3</sup>, S. Grazhdannikov<sup>4,5</sup>, L.I. Isaenko<sup>4,5</sup>, P.G. Krinitsin<sup>4,5</sup>, M.S.

Molokeev<sup>5,6,7</sup>, I.P. Prosvirin<sup>8</sup>, Xingxing Jiang<sup>3</sup>, Zheshuai Lin<sup>3</sup>

<sup>1</sup>Laboratory of Optical Materials and Structures, Institute of Semiconductor Physics, SB RAS,  
Novosibirsk 630090, Russia

<sup>2</sup>Laboratory of Semiconductor and Dielectric Materials, Novosibirsk State University, Novosibirsk  
630090, Russia

<sup>3</sup>Key Laboratory of Functional Crystals and Laser Technology, Technical Institute of Physics and  
Chemistry, Chinese Academy of Sciences, Beijing 100190, China

<sup>4</sup>Laboratory of Crystal Growth, Institute of Geology and Mineralogy, SB RAS, Novosibirsk  
630090, Russia

<sup>5</sup>Laboratory of Functional Materials, Novosibirsk State University, Novosibirsk 630090, Russia

<sup>6</sup>Laboratory of Crystal Physics, Kirensky Institute of Physics, Federal Research Center KSC SB  
RAS, Krasnoyarsk 660036, Russia

<sup>7</sup>Department of Physics, Far Eastern State Transport University, Khabarovsk 680021, Russia

<sup>8</sup>Surface Science Laboratory, Boreskov Institute of Catalysis, SB RAS, Novosibirsk 630090, Russia

**Table S1.** Fractional atomic coordinates and isotropic displacement parameters ( $\text{\AA}^2$ ) of  $\text{LiGaTe}_2$ 

	$x$	$y$	$z$	$U_{\text{iso}}$
Te	0.26834 (18)	3/4	1/8	0.0138 (5)
Ga	0	0	1/2	0.0201 (11)
Li	0	0	0	0.0126

**Table S2.** Main bond lengths (Å) of LiGaTe<sub>2</sub>

Ga—Te <sup>i</sup>	2.6086 (7)	Li—Te <sup>ii</sup>	2.7462 (7)
--------------------	------------	---------------------	------------

Symmetry codes: (i)  $-y+1/2, x-1/2, -z+1/2$ ; (ii)  $x, y-1, z$ .

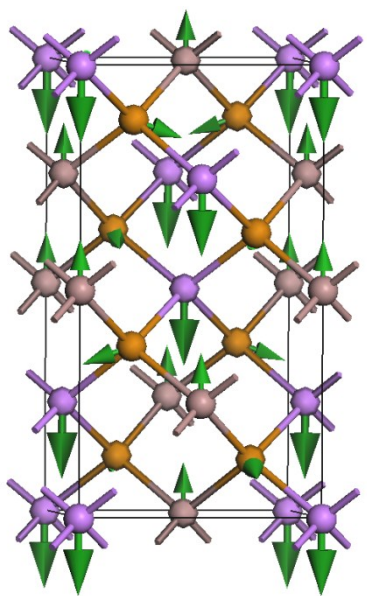
**Table S3.** Main parameters of refinement of the LiGaTe<sub>2</sub> sample from 303 to 583 K

T, K	Space group	Cell parameters (°, Å), Cell volume (Å <sup>3</sup> )	$R_{DDM}$ , $R_B$ (%), $\chi^2$
303	<i>I-42d</i>	$a = 6.33859$ (11), $c = 11.7040$ (2), $V = 470.24$ (2)	14.64, 6.7, 1.14
323	<i>I-42d</i>	$a = 6.34095$ (16), $c = 11.7030$ (3), $V = 470.55$ (3)	15.24, 7.85, 1.21
343	<i>I-42d</i>	$a = 6.34306$ (16), $c = 11.7011$ (4), $V = 470.79$ (3)	15.30, 7.90, 1.16
363	<i>I-42d</i>	$a = 6.34547$ (15), $c = 11.6991$ (4), $V = 471.06$ (3)	15.60, 7.79, 1.16
383	<i>I-42d</i>	$a = 6.34710$ (16), $c = 11.6979$ (4), $V = 471.41$ (3)	15.60, 8.21, 1.12
403	<i>I-42d</i>	$a = 6.35063$ (16), $c = 11.6969$ (3), $V = 471.74$ (3)	16.17, 7.21, 1.15
423	<i>I-42d</i>	$a = 6.3529$ (2), $c = 11.6955$ (5), $V = 472.02$ (4)	15.64, 8.57, 1.10
443	<i>I-42d</i>	$a = 6.3550$ (1), $c = 11.6914$ (2), $V = 472.17$ (2)	13.52, 8.17, 1.18
463	<i>I-42d</i>	$a = 6.35769$ (9), $c = 11.6900$ (2), $V = 472.51$ (2)	14.25, 7.73, 1.20
483	<i>I-42d</i>	$a = 6.36001$ (11), $c = 11.6875$ (2), $V = 472.75$ (2)	13.86, 8.10, 1.20
503	<i>I-42d</i>	$a = 6.3626$ (1), $c = 11.6854$ (2), $V = 473.05$ (2)	14.00, 8.37, 1.19
523	<i>I-42d</i>	$a = 6.36473$ (12), $c = 11.6826$ (2), $V = 473.26$ (2)	14.84, 7.99, 1.22
543	<i>I-42d</i>	$a = 6.36758$ (11), $c = 11.6805$ (2), $V = 473.59$ (2)	14.86, 9.01, 1.21
563	<i>I-42d</i>	$a = 6.3700$ (1), $c = 11.6779$ (2),	15.69, 8.35, 1.23

---

$$V = 473.85 (2)$$

---



**Figure S1.** The diagram of vibrational mode of  $75.14\text{ cm}^{-1}$ .

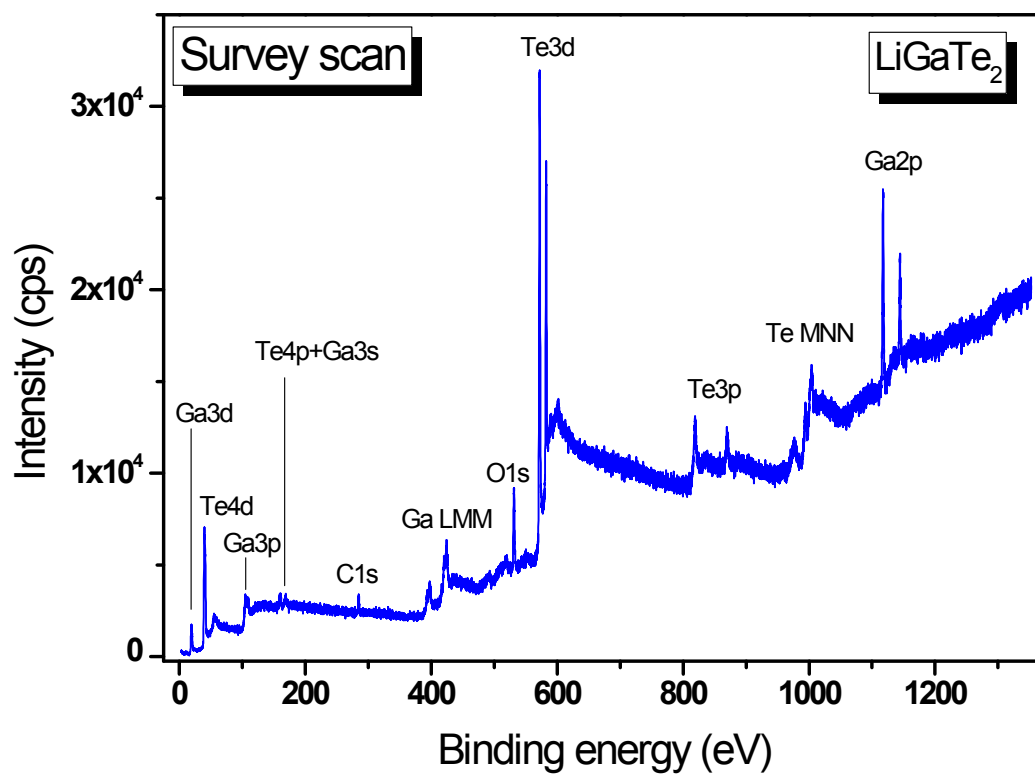
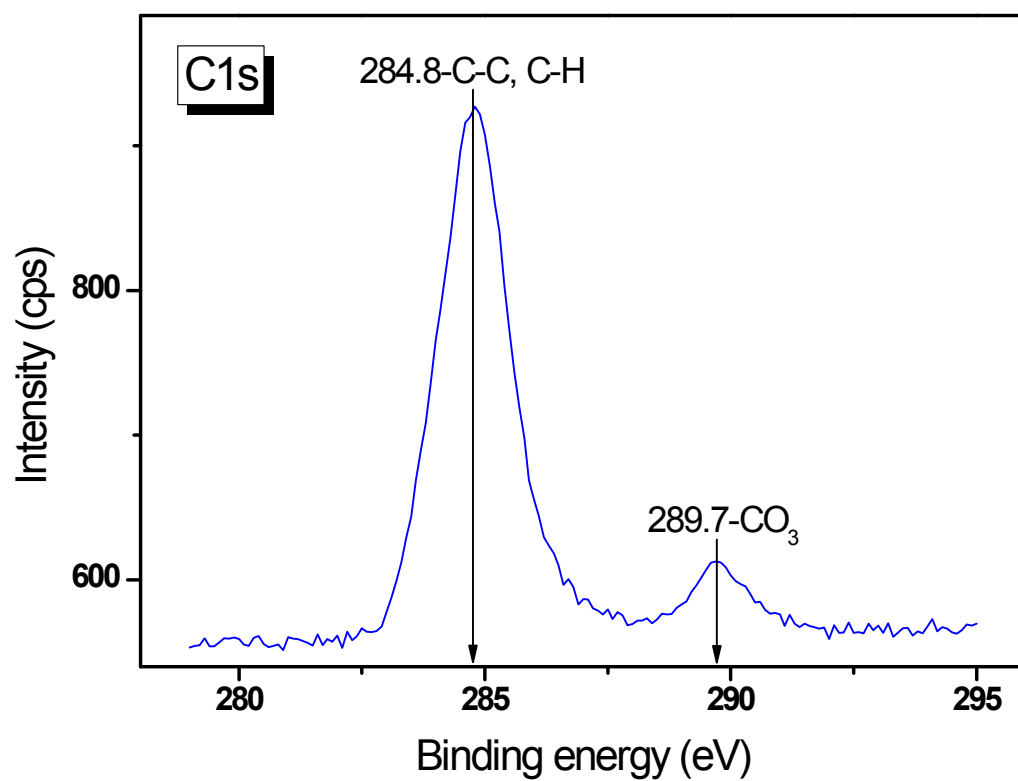


Figure S2. Survey photoelectron spectrum of  $\text{LiGaTe}_2$ .



**Figure S3.** C 1s core level.



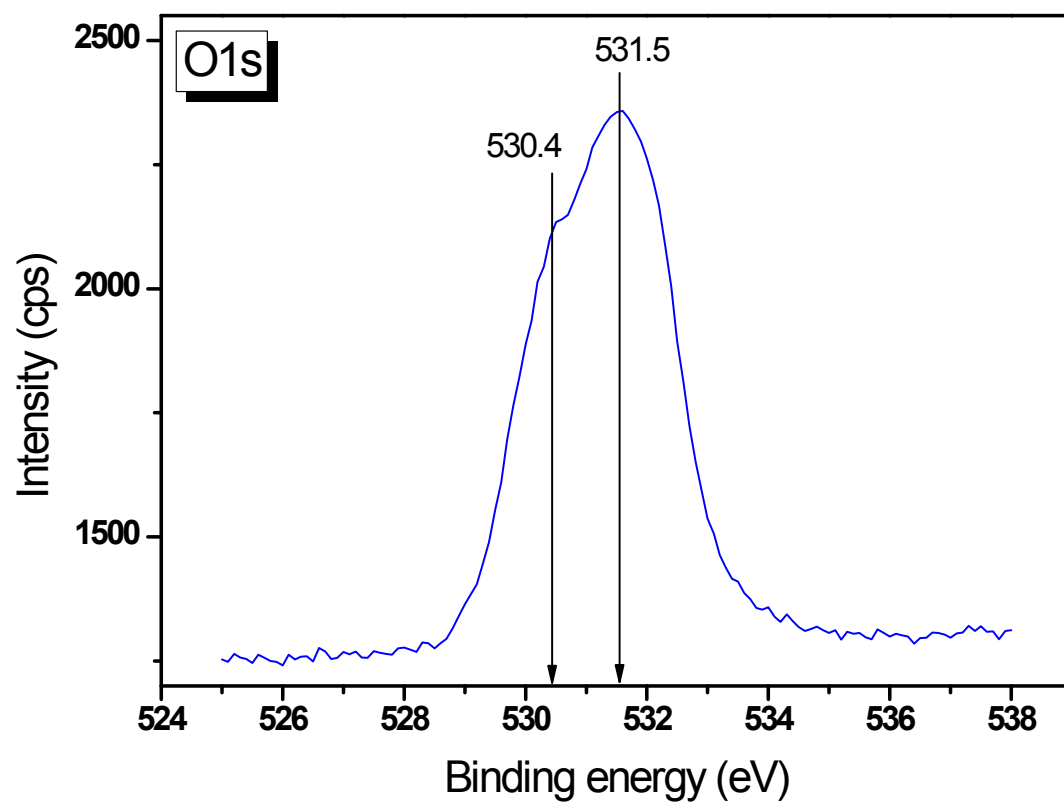
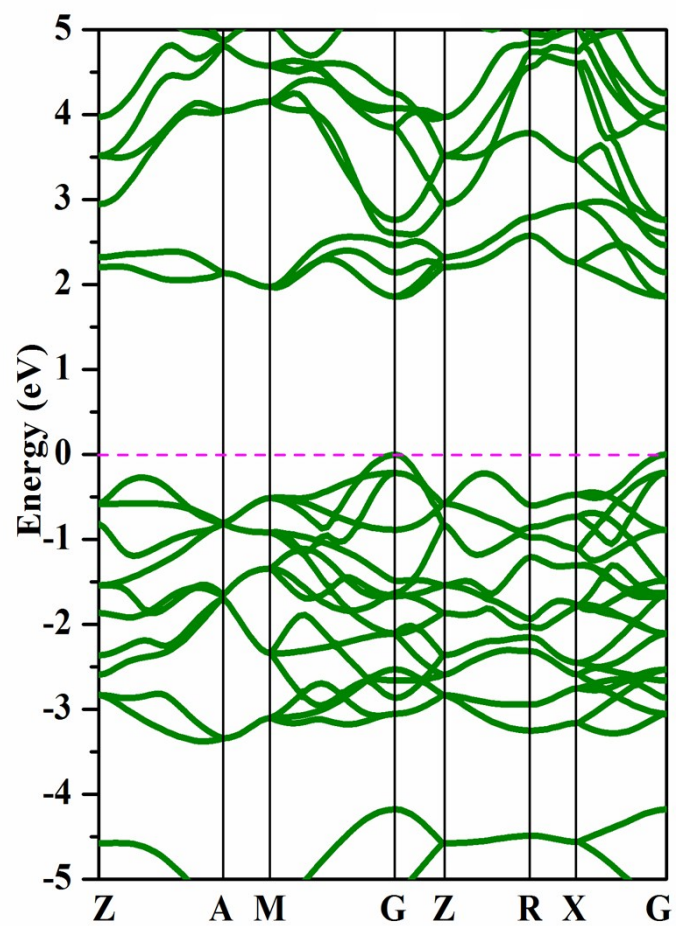
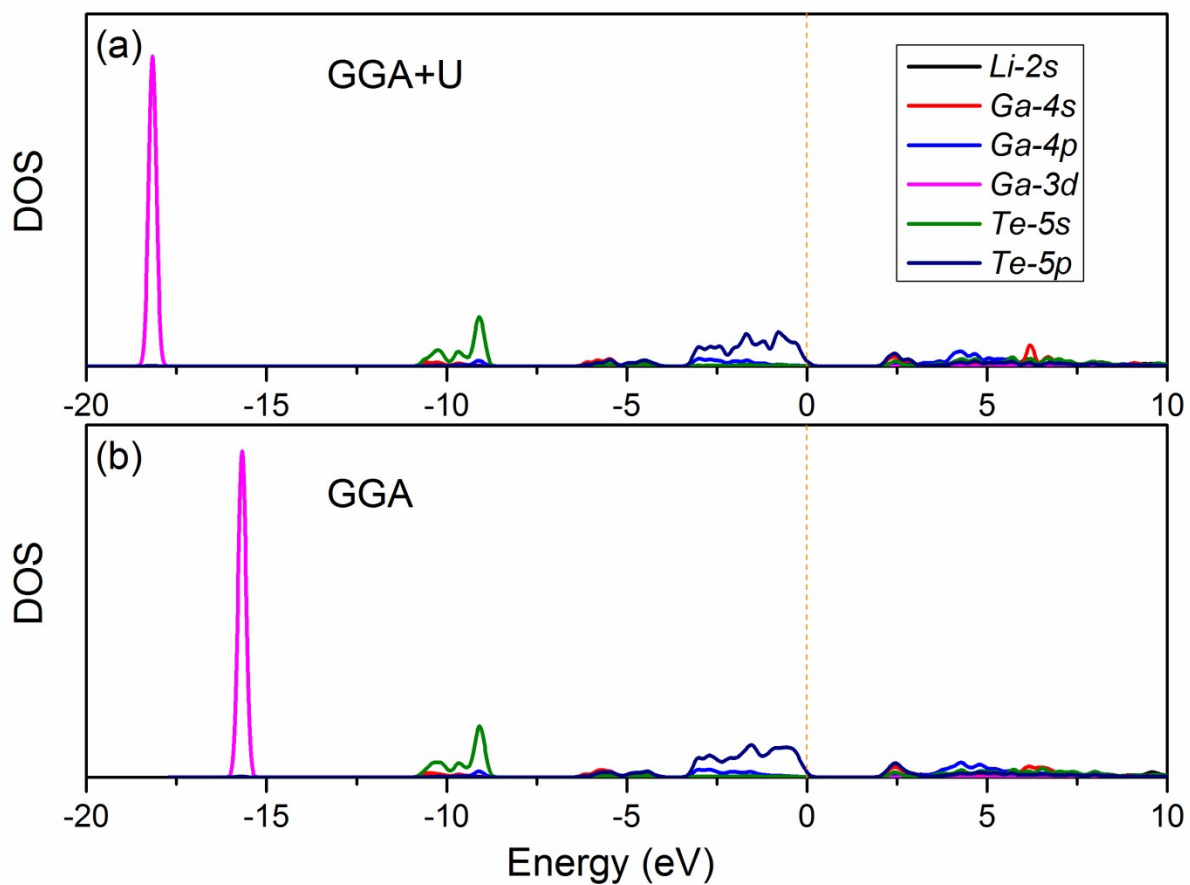


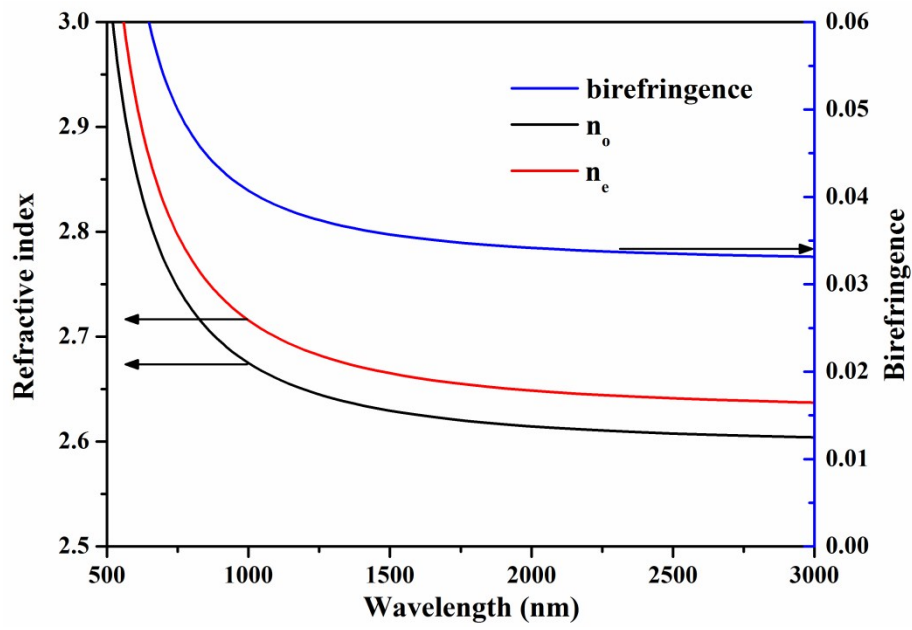
Figure S4. O 1s band.



**Figure S5.** Electronic band structure of LiGaTe<sub>2</sub>, calculated by PBE functional.



**Figure S6.** the calculated density of states of LiGaTe<sub>2</sub>. (a) GGA+U, (b) GGA



**Figure S7.** The calculated refractive indexes and birefringence of LiGaTe<sub>2</sub> crystal.