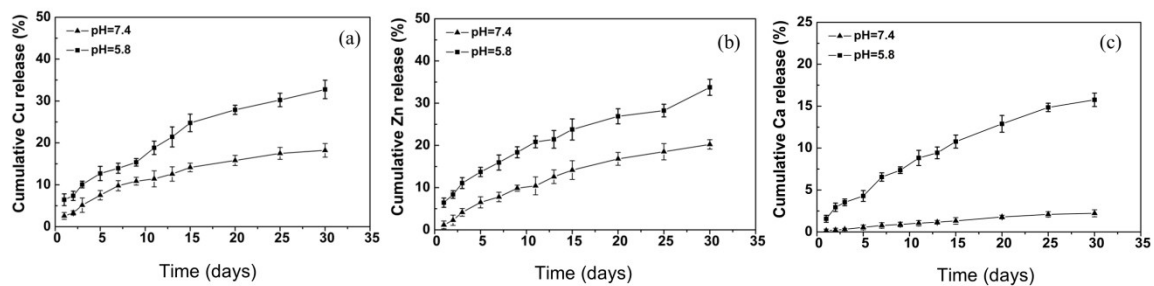
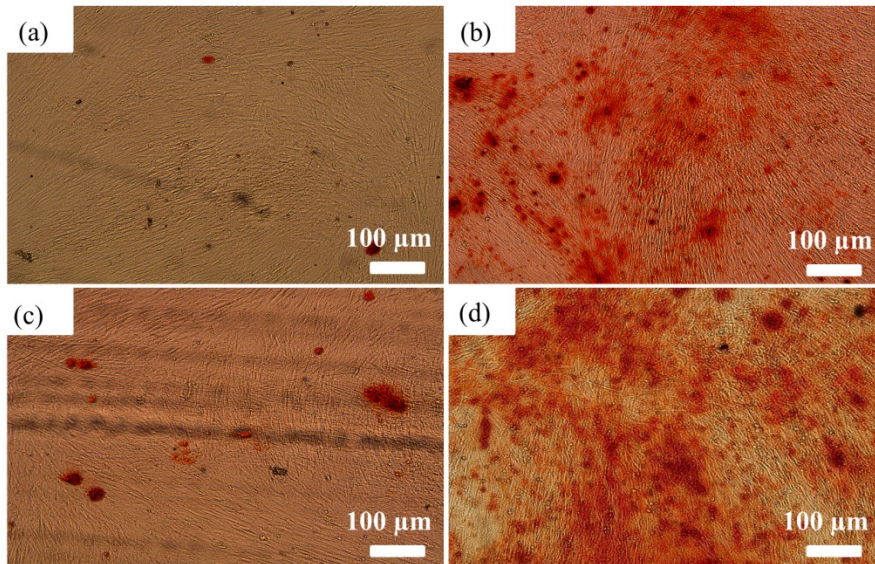


Electronic Supplementary Information

Supplementary Fig. S1 Metallic ions release from the scaffolds P2 at various pH solution: (a) Cu, (b) Zn and (c) Ca ions.



Supplementary Fig. S2 Alizarin red S staining of BMSCs mineralization after 21 days of culture in different medium: (a) blank culture medium, (b) Zn²⁺-added culture medium, (c) Cu²⁺-added culture medium and (d) the extraction medium.



Supplementary Fig. S3 In vitro angiogenesis of VECs cultured on Matrigel-coated wells with different medium: (a) blank culture medium, (b) Zn^{2+} -added culture medium, (c) Cu^{2+} -added culture medium and (d) the extraction medium.

