

## Supporting information

### **Selective Utilization of Methoxy Group in Lignin for N-methylation Reaction of Anilines**

Qingqing Mei<sup>a</sup>, Xiaojun Shen<sup>ab</sup>, Huizhen Liu<sup>\*ab</sup>, Hangyu Liu<sup>ab</sup>, Junfeng Xiang<sup>a</sup>, and Buxing Han<sup>\*ab</sup>

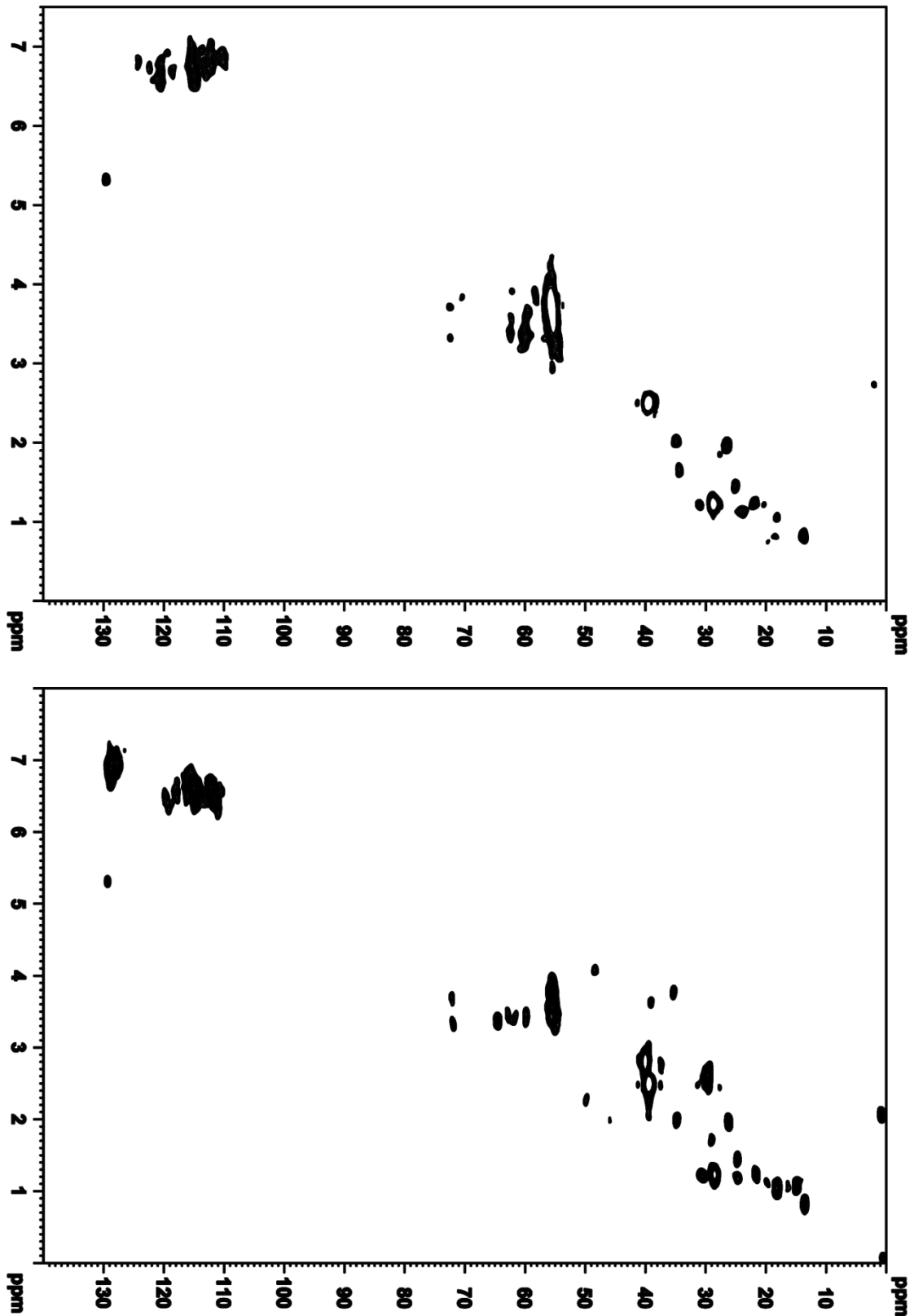


Figure S1. The HSQC NMR spectra of the lignin before (up) and after (down) reaction.

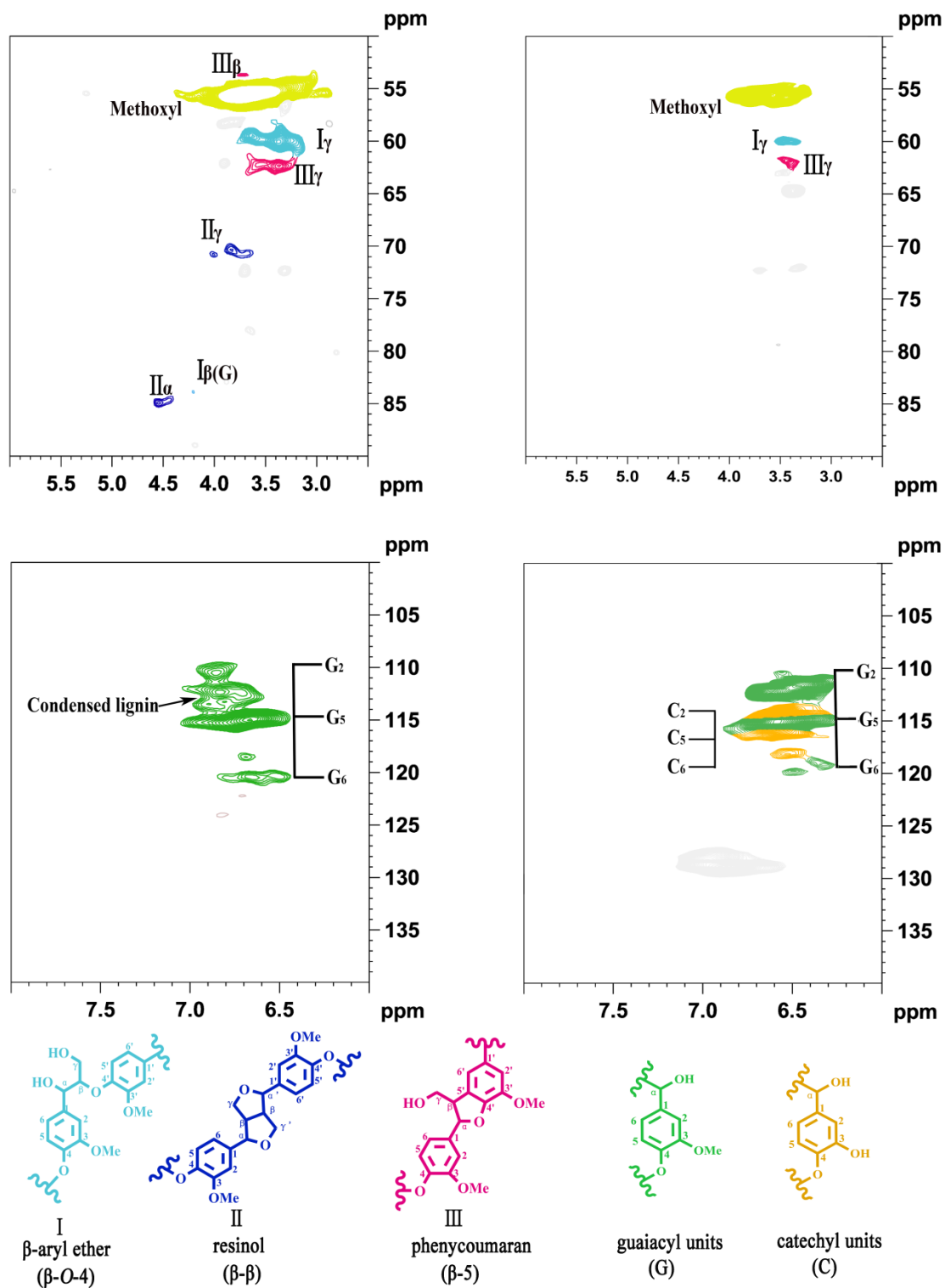


Figure S2. Partial enlargement of the HSQC NMR spectra of the lignin before (left) and after (right) reaction.

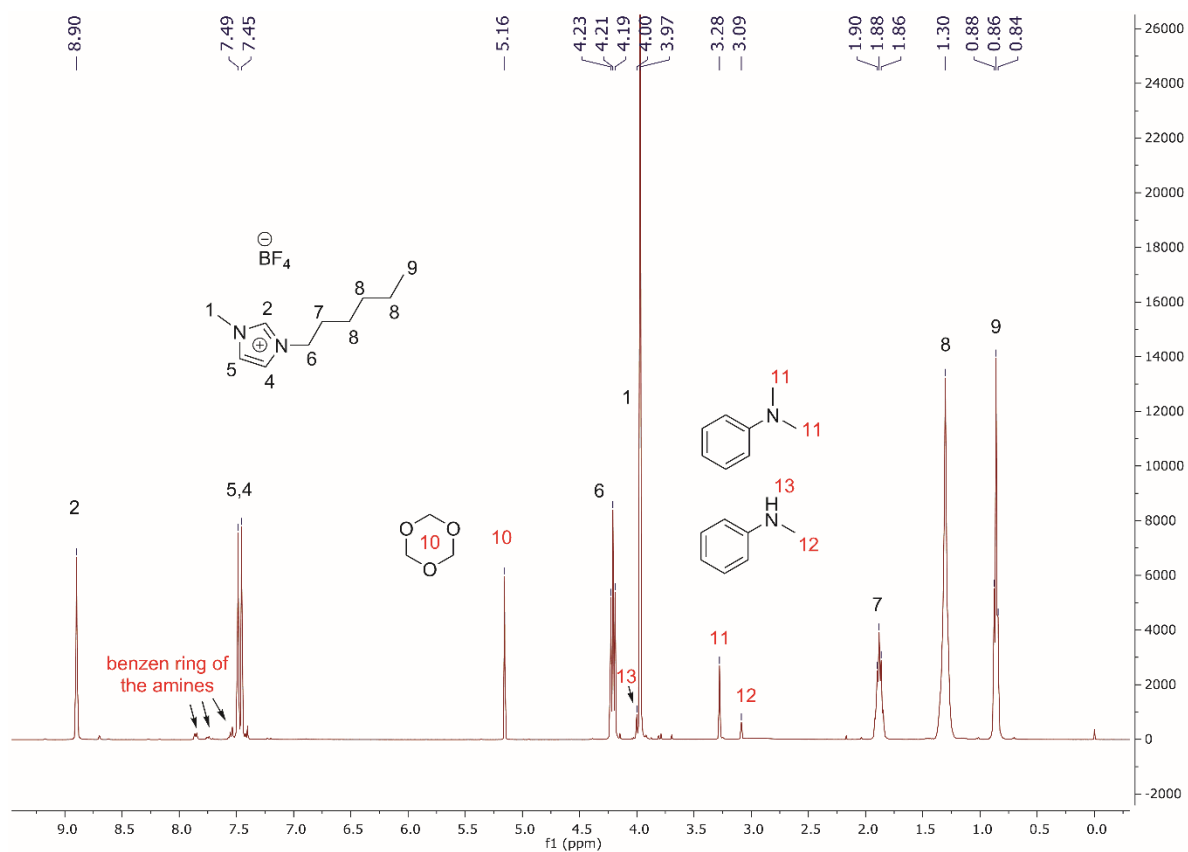


Figure S3. An example NMR spectrum for quantitative analysis. Signal 10, 11 and 12 are the characteristic peak of the internal standard, the product (N,N-dimethylaniline) and the reactant (N-methylaniline), respectively.