

Supplementary Information

DNA concatamers-silver nanoparticles as signal probe for electrochemical prostate specific antigen detection

Xi Chen, Ya Wang, Junjun Zhang, Yuzhong Zhang*

(College of Chemistry and Materials Science, Anhui Key Laboratory of Chem-Biosensing, Anhui Normal University, Wuhu 241002, People's Republic of China)

* Corresponding author. Tel.: +86 553 3869303; Fax: +86 553 3869303

E-mail address: zhyz65@mail.ahnu.edu.cn (Y. Zhang).

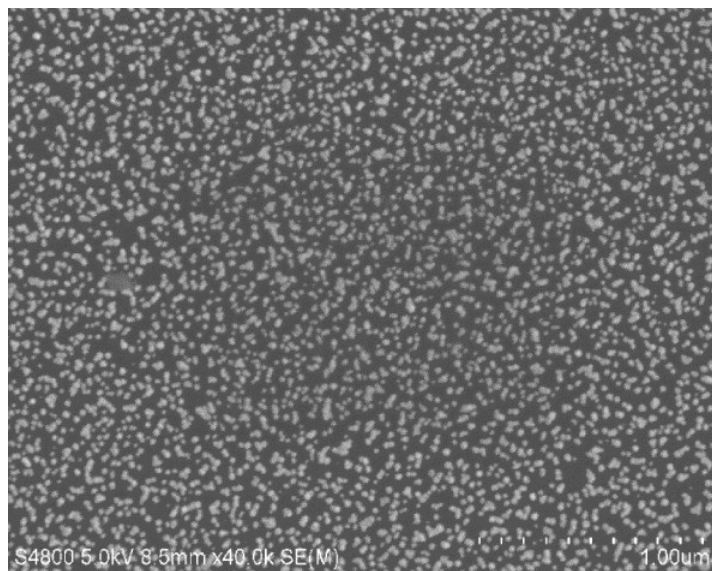


Fig. S1 SEM image of Au NPs

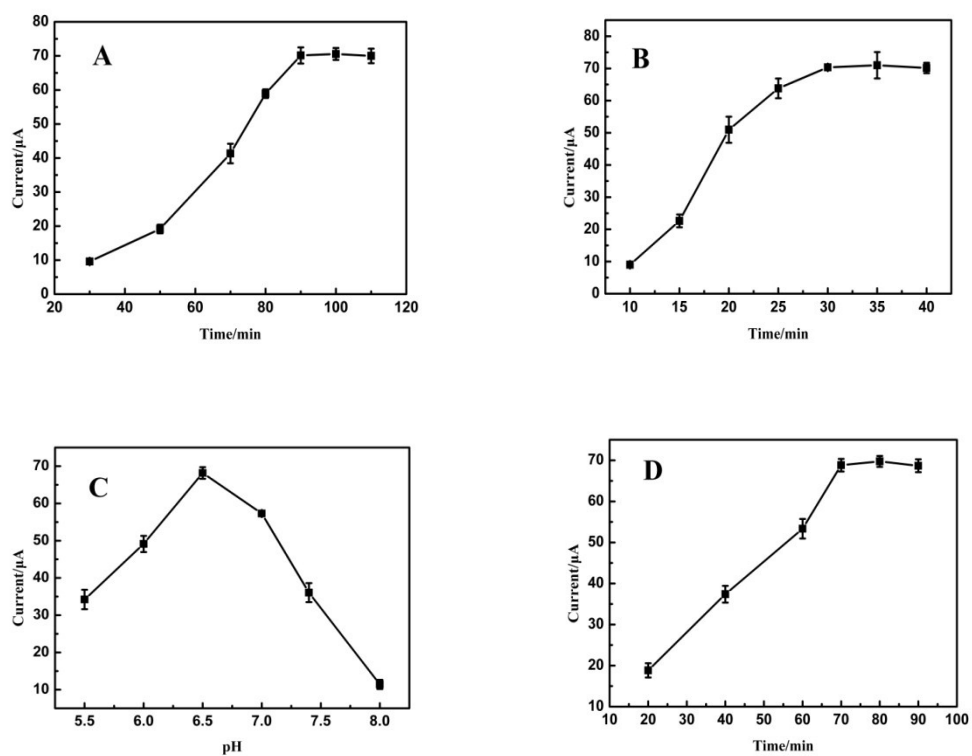


Fig. S2. Effects of experimental conditions on the response of immunosensor: (A) Hybridization time of S_1 and S_2 (B) The incubation time of DNA concatemers and Ag NPs. (C) pH values (D) the hybridization time between Ab_2 - S_0 composites and signal probe

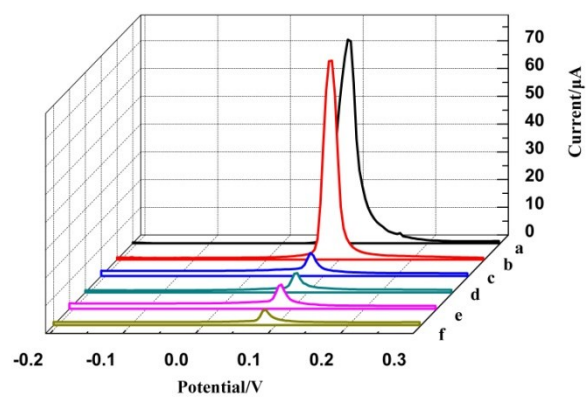


Fig. S3. The selectivity of the immunosensor : (a) 1 ng mL⁻¹ PSA; (b) 1 ng mL⁻¹ PSA + 100 ng mL⁻¹ Mixture (containing CRP, AFP, CEA); (c) 100 ng mL⁻¹ CRP; (d) 100 ng mL⁻¹ CEA; (e) 100 ng mL⁻¹ AFP; (f) 0 ng mL⁻¹ PSA;