

Supplementary Materials

Application of quantitative spectral deconvolution of ^1H NMR (qsd-NMR) in the simultaneous quantitative determination of creatinine and metformin in the human urine

Maulidiani^{a,b,*}, Faridah Abas^{b,c,*}, Rudiyanto^d, Nik Mohd Hafiz Abdullah^e, Azrina Azlan^f, Nordin H. Lajis^g

^a Faculty of Science and Marine Environment, Universiti Malaysia Terengganu, 21030 Kuala Nerus, Terengganu, Malaysia

^b Laboratory of Natural Products, Institute of Bioscience, Universiti Putra Malaysia, 43400 UPM, Serdang, Selangor, Malaysia.

^c Department of Food Science, Faculty of Food Science and Technology, Universiti Putra Malaysia, 43400 UPM, Serdang, Selangor, Malaysia.

^d Faculty of Fishery and Food Sciences, Universiti Malaysia Terengganu, 21030 Kuala Nerus, Terengganu, Malaysia

^e Central Lab, Universiti Malaysia Terengganu, 21030 Kuala Nerus, Terengganu, Malaysia

^f Department of Nutrition and Dietetics, Faculty of Medicine and Health Sciences, Universiti Putra Malaysia (UPM), 43400 Serdang, Selangor, Malaysia

^g Department of Chemistry, Faculty of Science, Universiti Putra Malaysia, 43400 UPM Serdang, Selangor, Malaysia.

Author Contributions

*To whom correspondence should be addressed.

E-mail: faridah_abas@upm.edu.my (F. Abas)

maulidiani@umt.edu.my (Maulidiani)

Tel: (60) 38946 8343

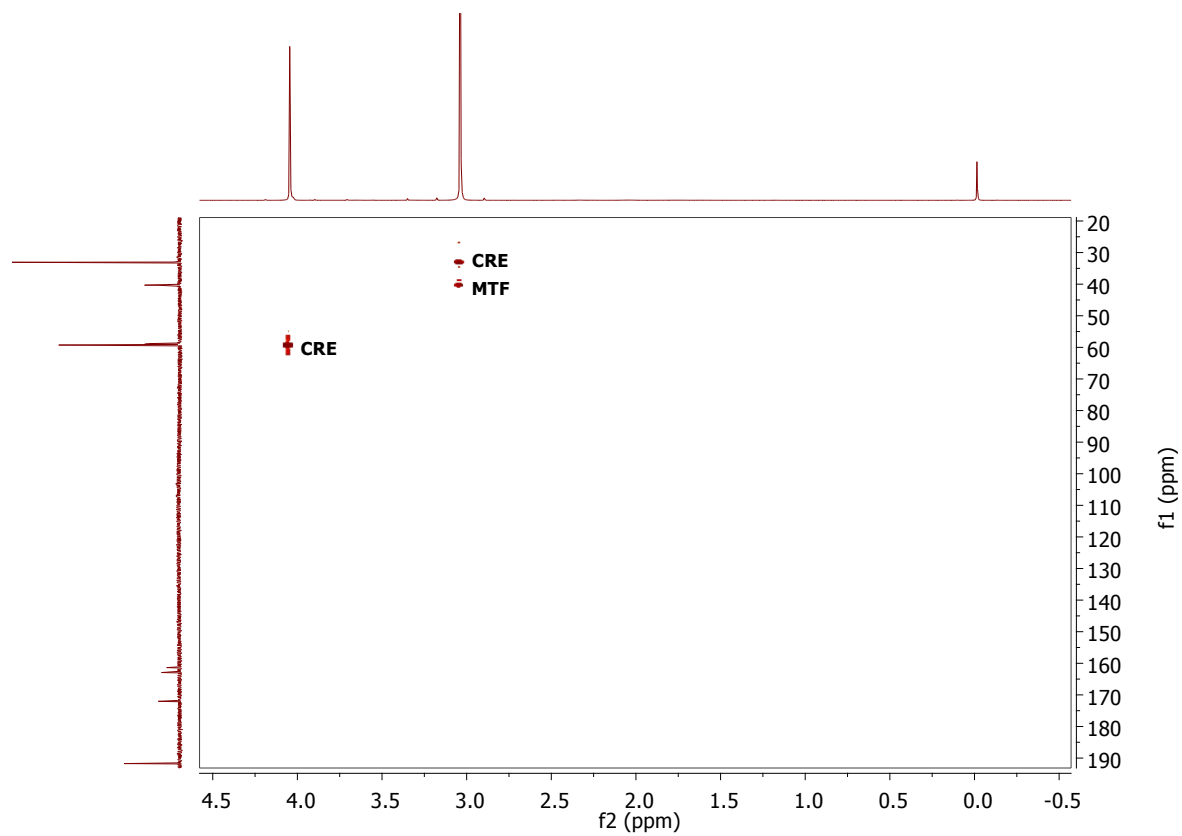


Figure S1. 2D-HSQC spectrum of the mixture of metformin (MTF) and creatinine (CRE) in D_2O containing 0.1% TSP.

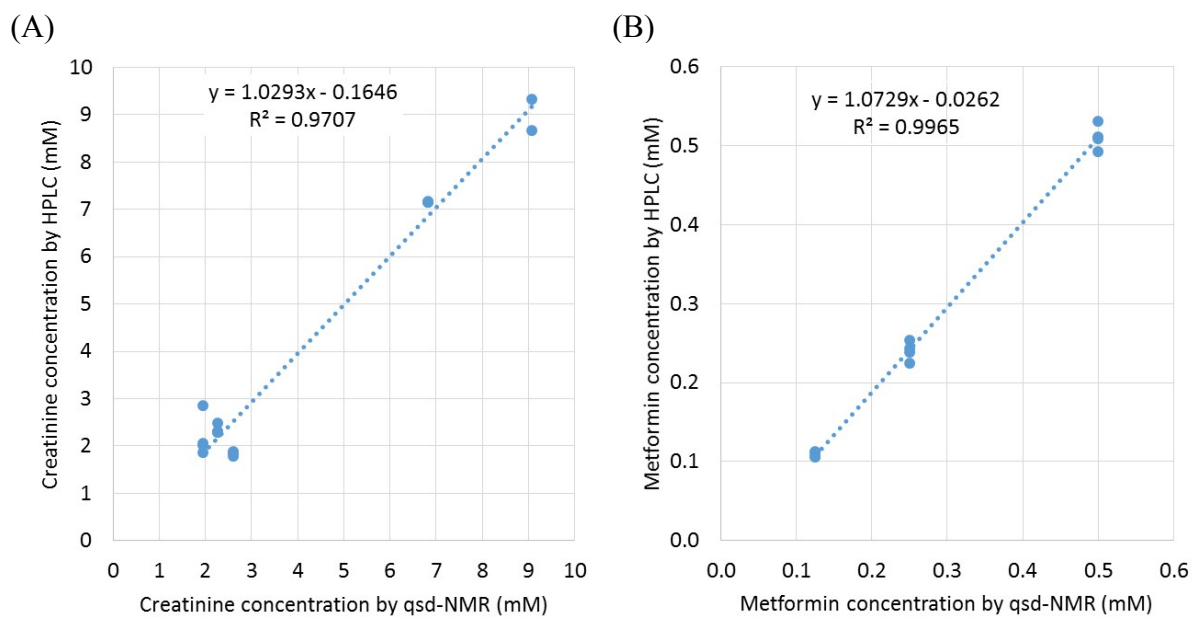


Figure S2. Comparison of quantification of urinary (A) creatinine and (B) metformin by the qsd-¹H NMR and HPLC analyses.