

Electronic Supplementary Information (ESI)

A rapid tag-free identification of *Escherichia coli* antibiotic-resistant isolates using Raman scattering

Figure S1 MLST (A) forward and (B) reverse sequencing of *adh* gene for ST131 *E. coli* strain 5.

Figure S1 MLST (C) forward and (D) reverse sequencing of *fumC* gene for ST131 *E. coli* strain 5.

Figure S1 MLST (E) forward and (F) reverse sequencing of *gyrB* gene for ST131 *E. coli* strain 5.

Figure S1 MLST (G) forward and (H) reverse sequencing of *icd* gene for ST131 *E. coli* strain 5.

Figure S1 MLST (I) forward and (J) reverse sequencing of *mdh* gene for ST131 *E. coli* strain 5.

Figure S1 MLST (K) forward and (L) reverse sequencing of *purA* gene for ST131 *E. coli* strain 5.

Figure S1 MLST (M) forward and (N) reverse sequencing of *recA* gene for ST131 *E. coli* strain 5.

Figure S2 FE-SEM images of *E. coli* isolates.

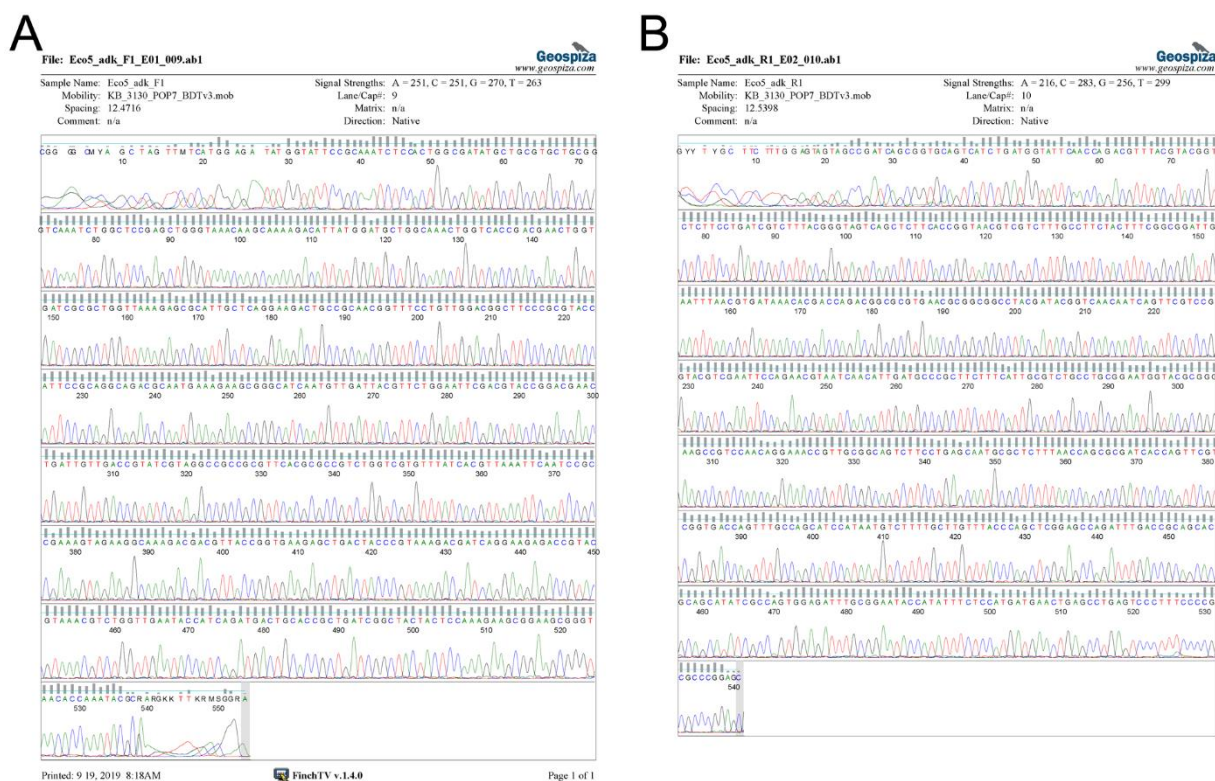
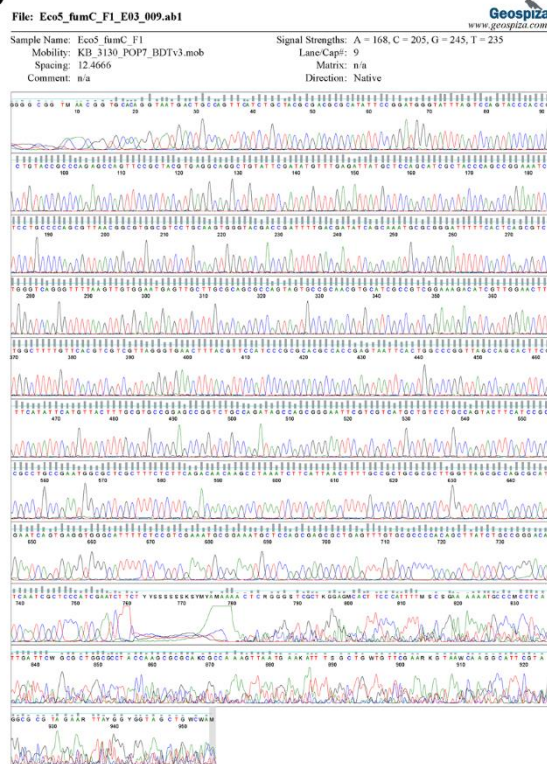


Fig. S1 MLST (A) forward and (B) reverse sequencing of *adh* gene for ST131 *E. coli* strain 5.

C



D

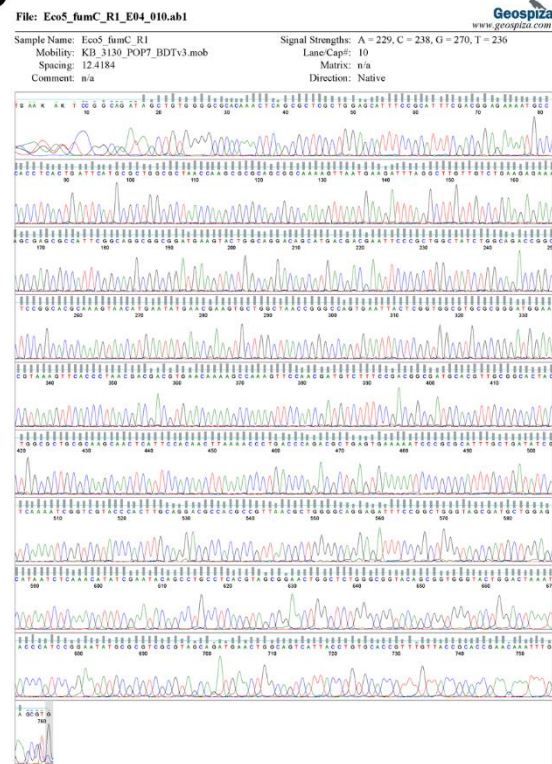
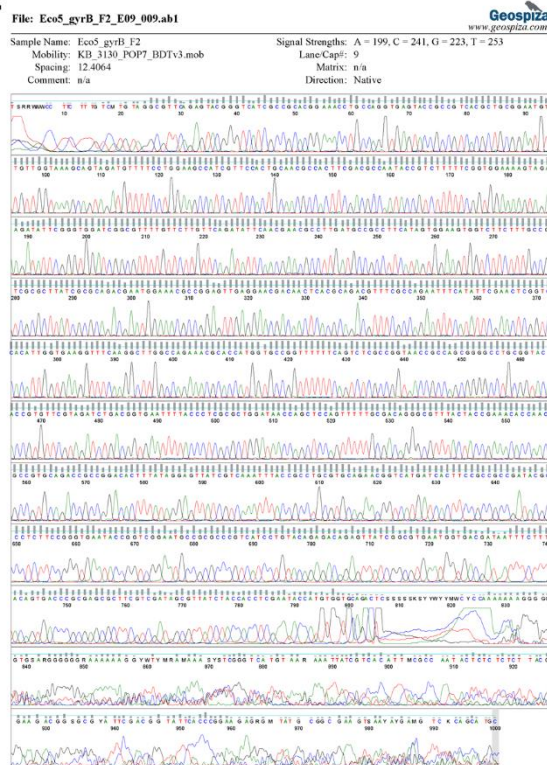


Fig. S1 MLST (C) forward and (D) reverse sequencing of *fumC* gene for ST131 *E. coli* strain 5.

E



F

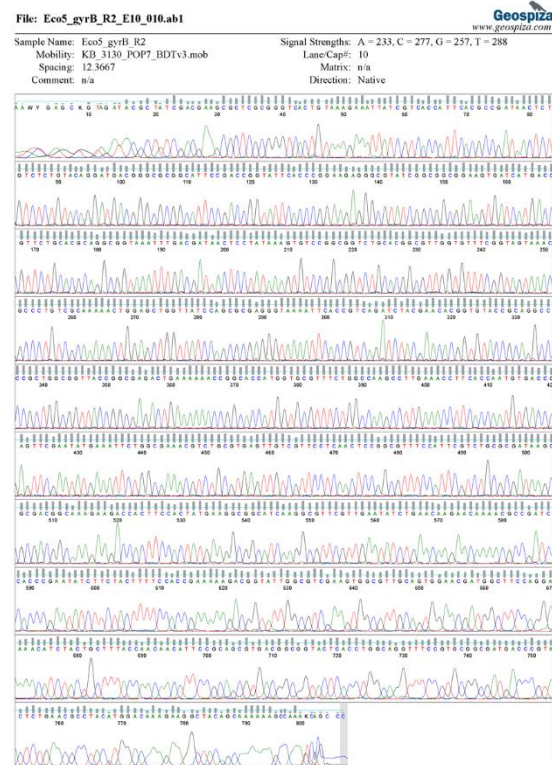
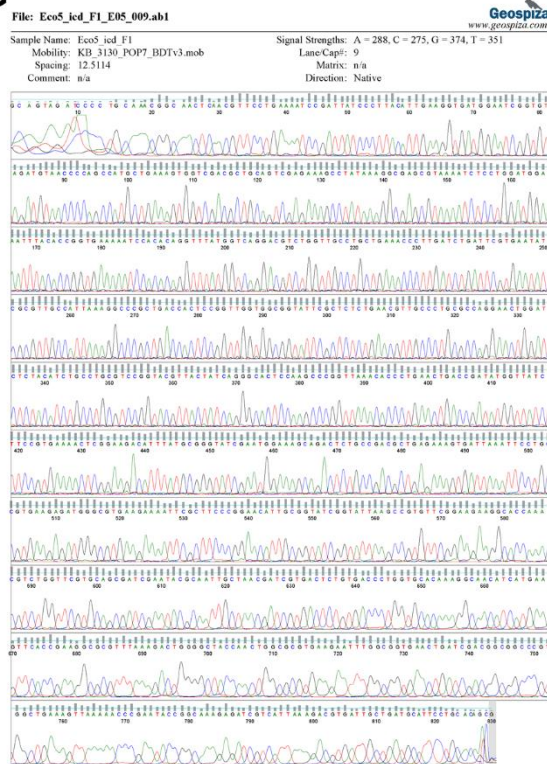


Fig. S1 MLST (E) forward and (F) reverse sequencing of *gyrB* gene for ST131 *E. coli* strain 5.

G



H

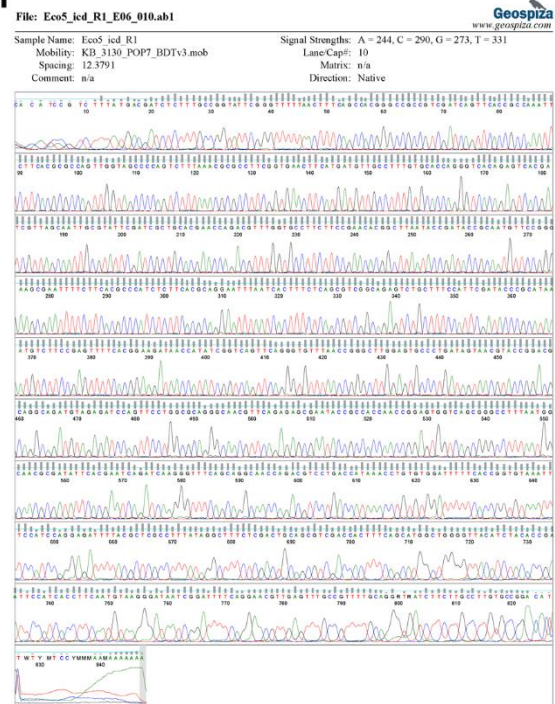
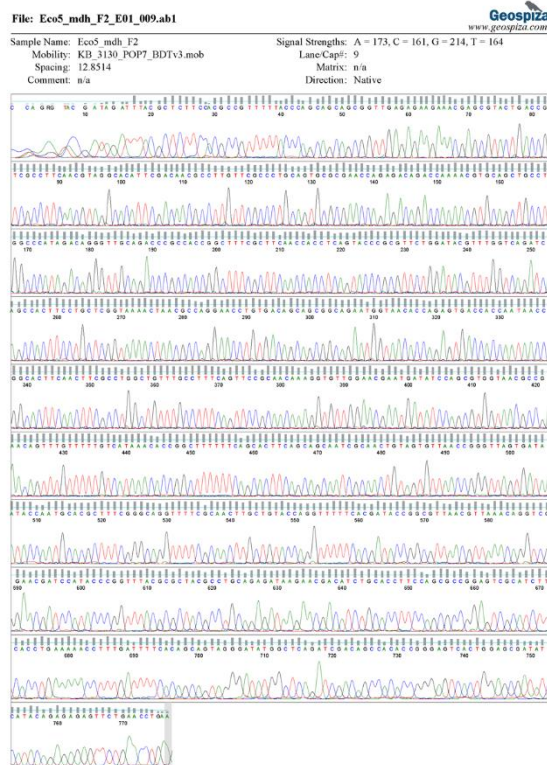


Fig. S1 MLST (G) forward and (H) reverse sequencing of *icd* gene for ST131 *E. coli* strain 5.

I



J

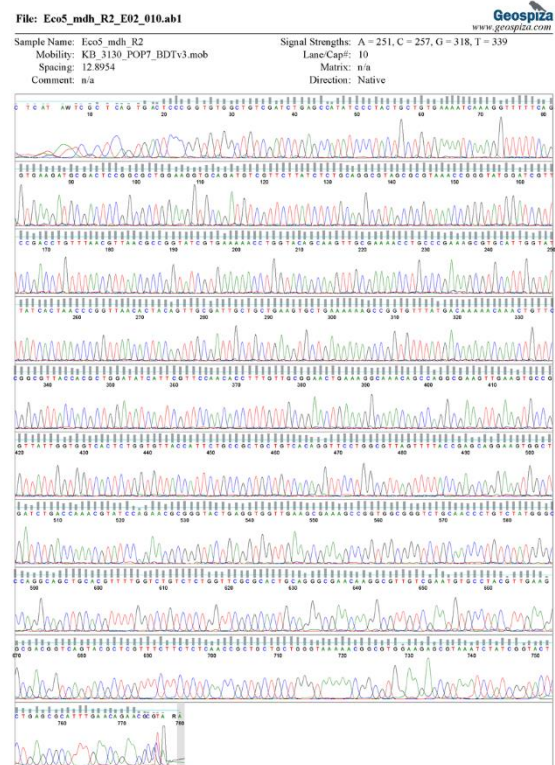
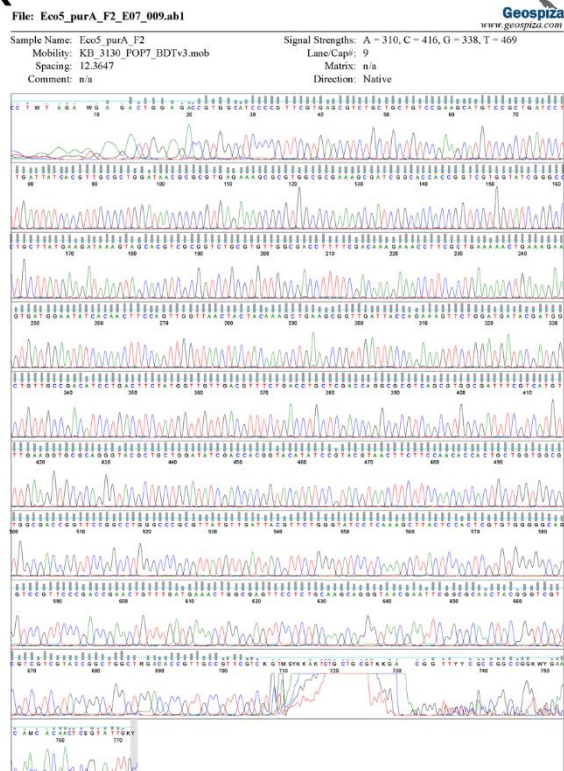


Fig. S1 MLST (I) forward and (J) reverse sequencing of *mdh* gene for ST131 *E. coli* strain 5.

K



L

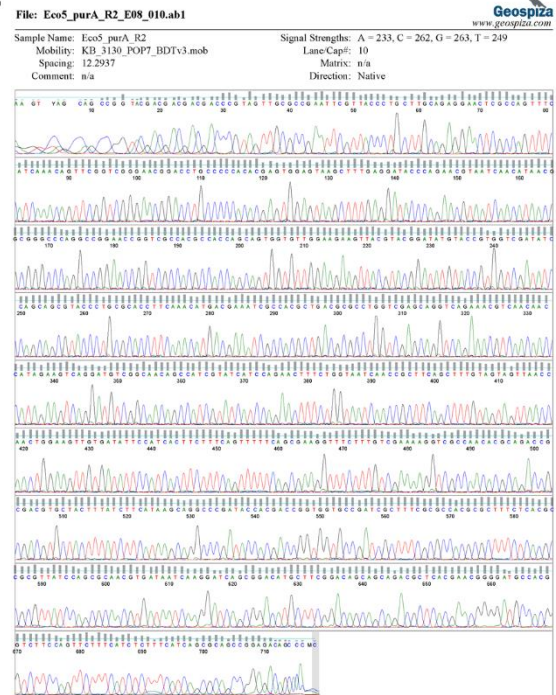
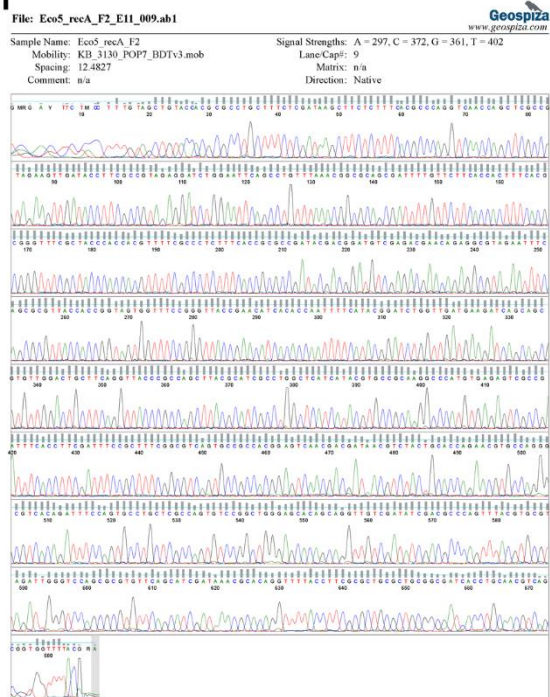


Fig. S1 MLST (K) forward and (L) reverse sequencing of *purA* gene for ST131 *E. coli* strain 5.

M



N

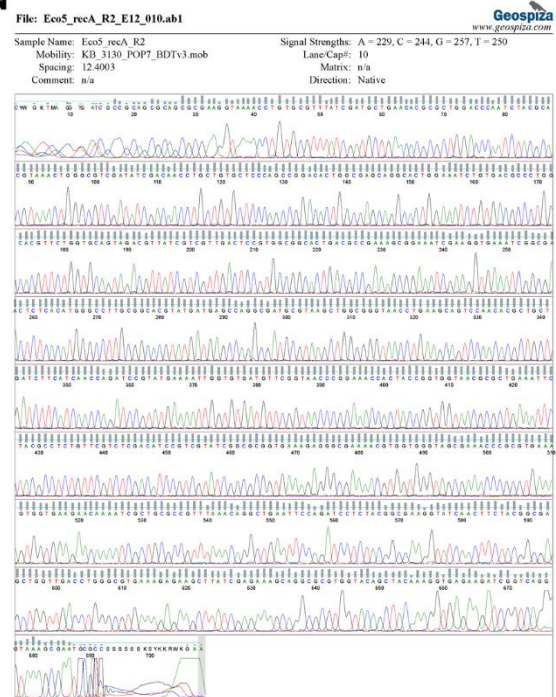


Fig. S1 MLST (M) forward and (N) reverse sequencing of *recA* gene for ST131 *E. coli* strain 5.

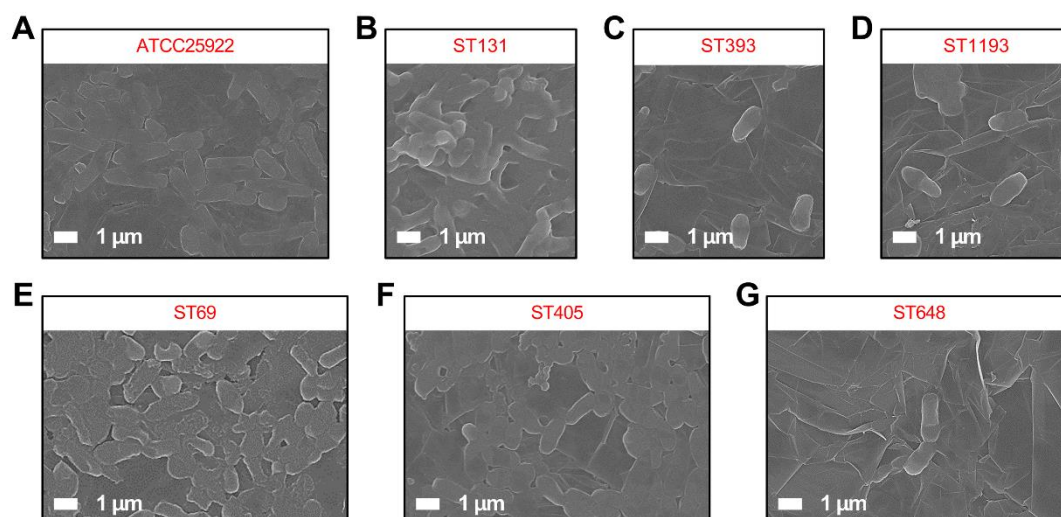


Fig. S2 FE-SEM images of (A) *E. coli* ATCC25922, (B) *E. coli* ST131, (C) *E. coli* ST393, (D) *E. coli* ST1193, (E) *E. coli* ST69, (F) *E. coli* ST405, and (G) *E. coli* ST648 isolates.