

Supporting Information

The effect of Mn on performance of MCF-supported highly dispersed iron catalysts for Fischer–Tropsch synthesis

*Siyuan Huang^a, Chengchao Liu^a, Yao Chen^{a,b}, Jingping Hong^a, Yanxi Zhao^a, Yuhua Zhang^a, Jinlin Li^{*a}*

^aKey Laboratory of Catalysis and Energy Materials Chemistry of Ministry of Education & Hubei Key Laboratory of Catalysis and Materials Science, South-Central University for Nationalities, Wuhan 430074, China.

^bKey Lab for Green Chemical Technology of Ministry of Education, School of Chemical Engineering and Technology, Collaborative Innovation Center of Chemical Science and Engineering (Tianjin), Tianjin University, Tianjin 300072, China

Corresponding author: Jinlin Li

E-mail address: Jinlinli@aliyun.com

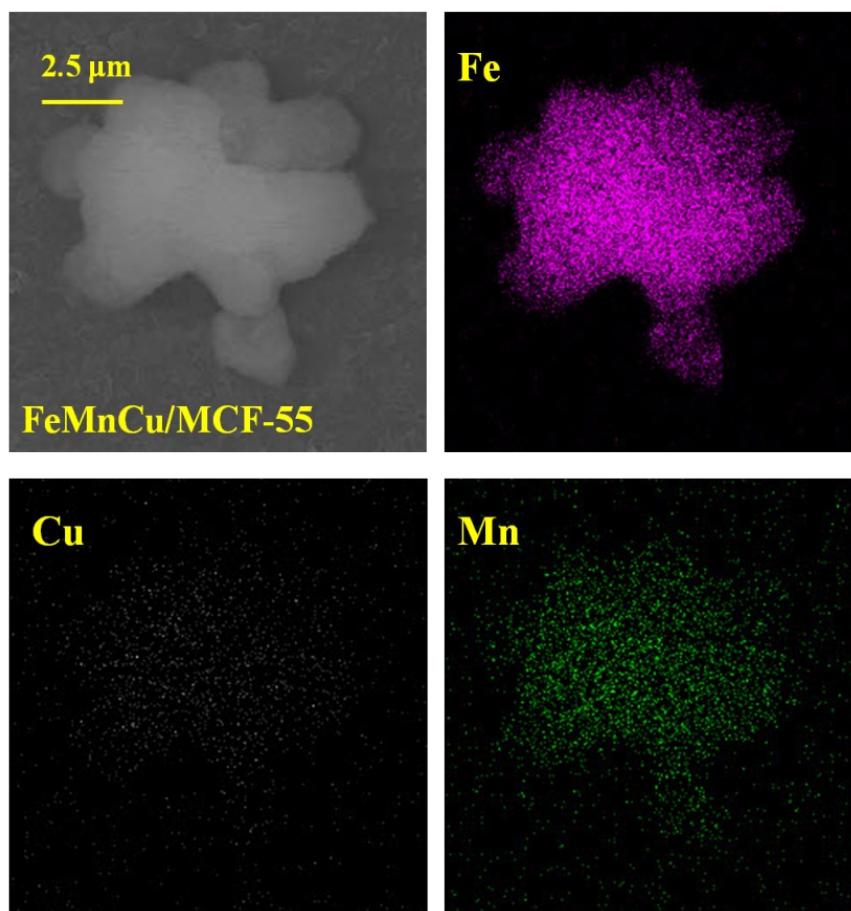


Fig. S1 SEM images of the FeMnCu/MCF-55 catalyst and SEM-EDX elemental mapping of Fe, Mn, and Cu on the catalyst.

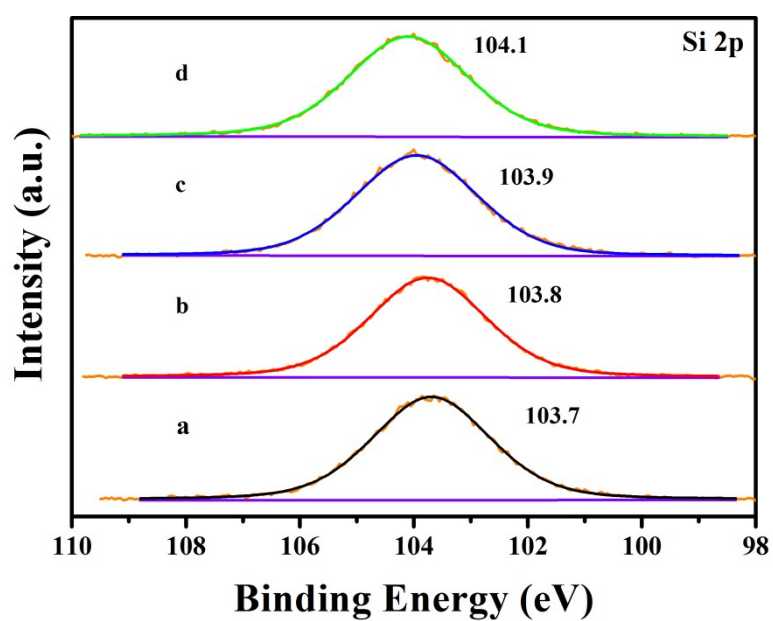


Fig. S2 The XPS profiles of Si2p for supported catalysts: a) FeMnCu/MCF-0; b) FeMnCu/MCF-9; c) FeMnCu/MCF-27; and d) FeMnCu/MCF-55.