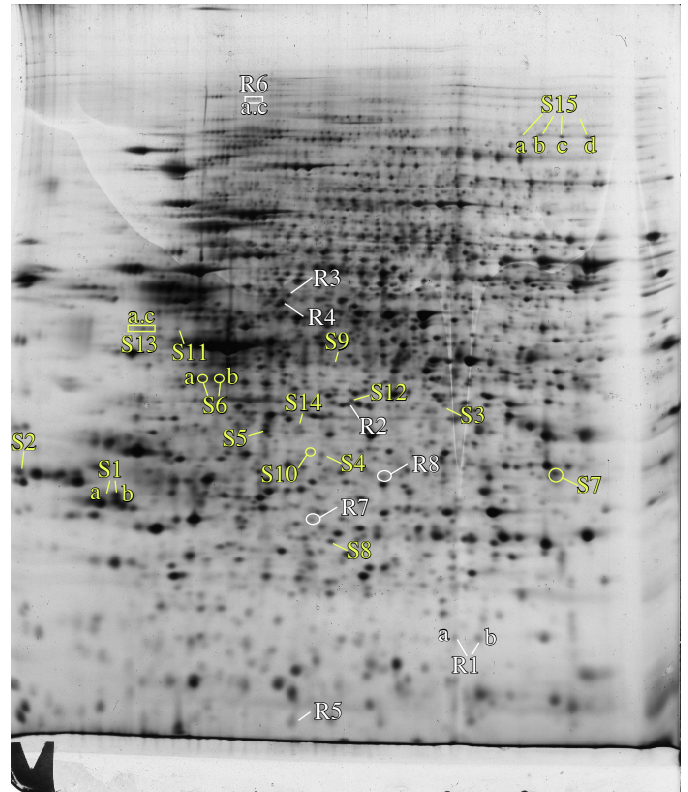
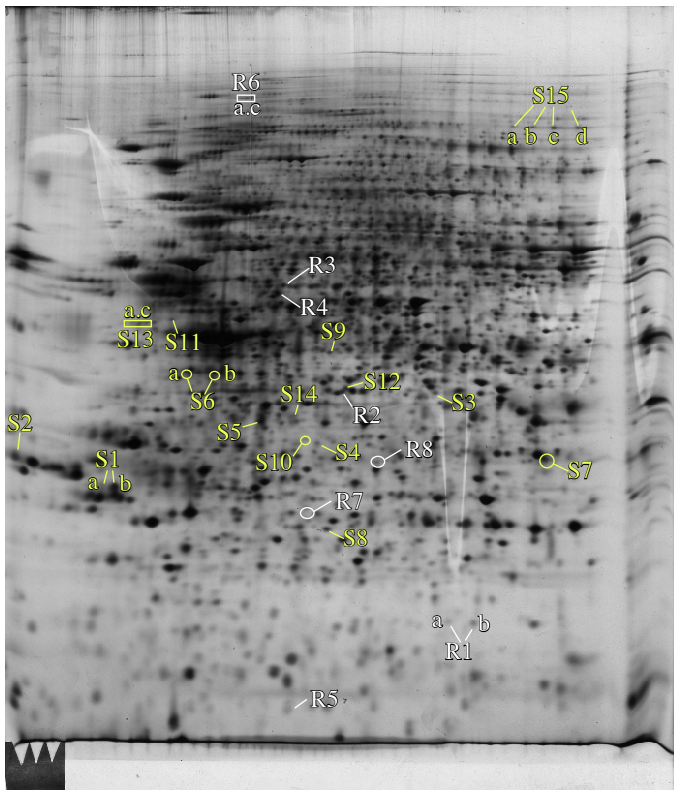


A



B



C

# Supplementary Figure 1 : Proteomic analysis of total cell extracts by 2D electrophoresis

Total cell extracts of RAW274.7 cells were separated by two-dimensional gel electrophoresis. The first dimensions covered a 4-8 pH range and the second dimension a 15-200 kDa range. Total cellular proteins (150 µg) were loaded on the first dimension gel.

A: gel obtained from control cells.

B: gel obtained from cells treated for 24 hours with 20 µg/ml silver nanoparticles

C: gel obtained from cells treated for 24 hours with 20 µg/ml silver nanoparticles and left to recover for 72hours

Only the proteins implied in RNA metabolism (R) and signaling (S) are shown in this figure