

Supporting Information

Influence of cobalt substitution on the crystal structure, band edges and photocatalytic property of hierarchical Bi_2WO_6 microsphere

Veerappan Kavinkumar ^a, Dhayanantha Prabu Jaihindh^b, Atul Verma^b, K. Jothivenkatachalam^{a, *}

Yen-Pei Fu^{b, *}

^aDepartment of Chemistry, Anna University, BIT Campus, Tiruchirappalli, 620024, Tamilnadu, India

^bDepartment of Materials Science and Engineering, National Dong Hwa University, Hualien, 97401, Taiwan

Figure S1.

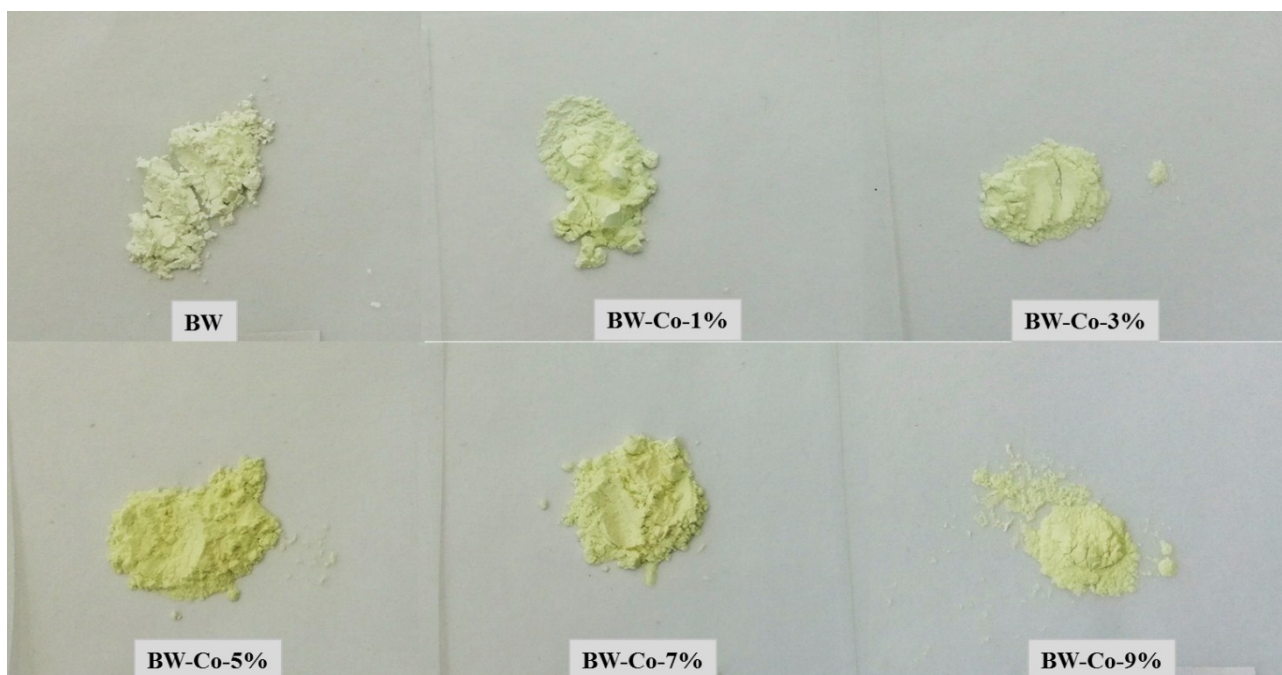


Figure S1. Photographs of prepared Bi_2WO_6 -based powders

Figure S2.

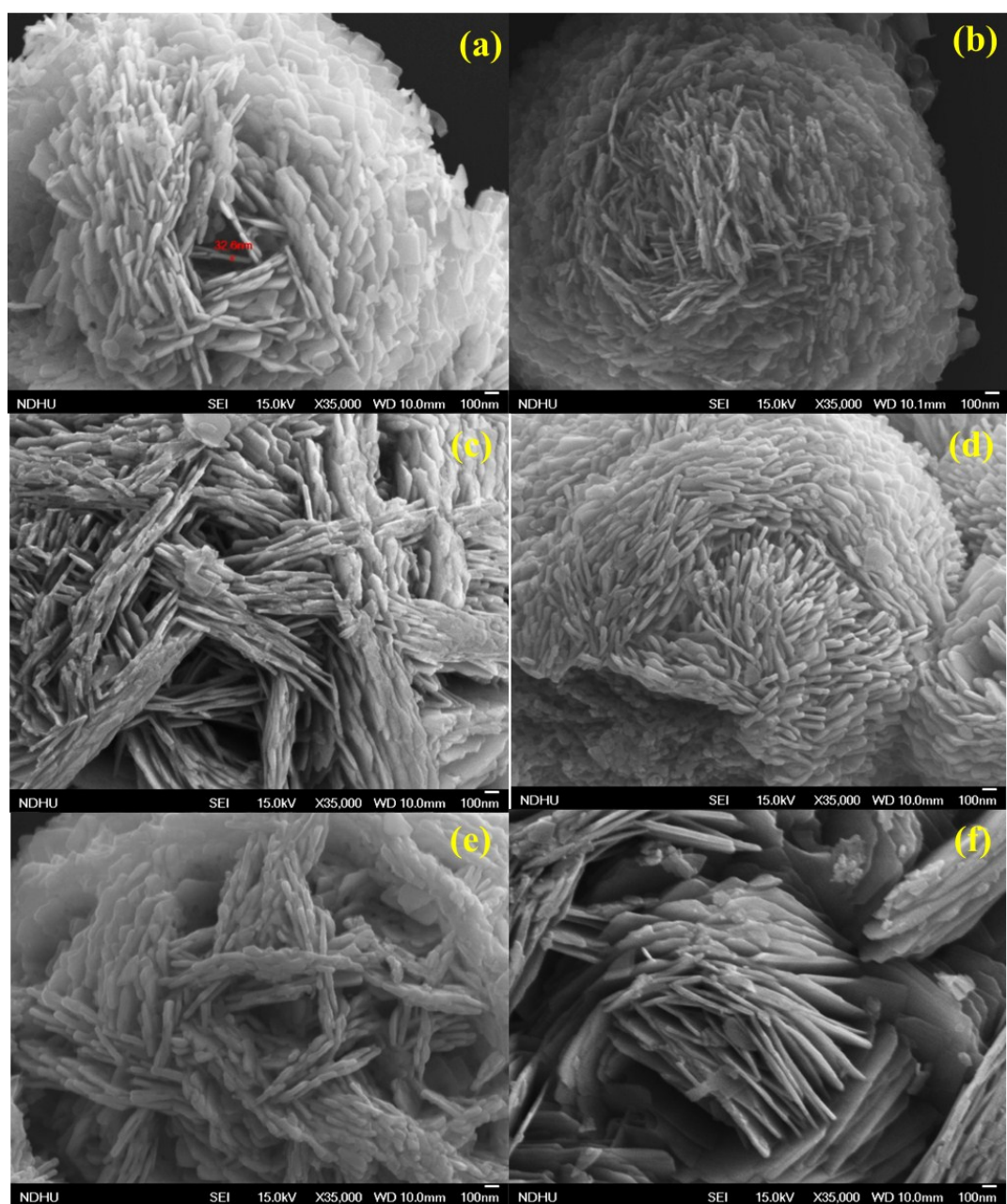


Figure S2. FE-SEM images for (a) BW, BW-Co-1, BW-Co-3, BW-Co-5, BW-Co-7 and BW-Co-9 photocatalysts

Figure S3.

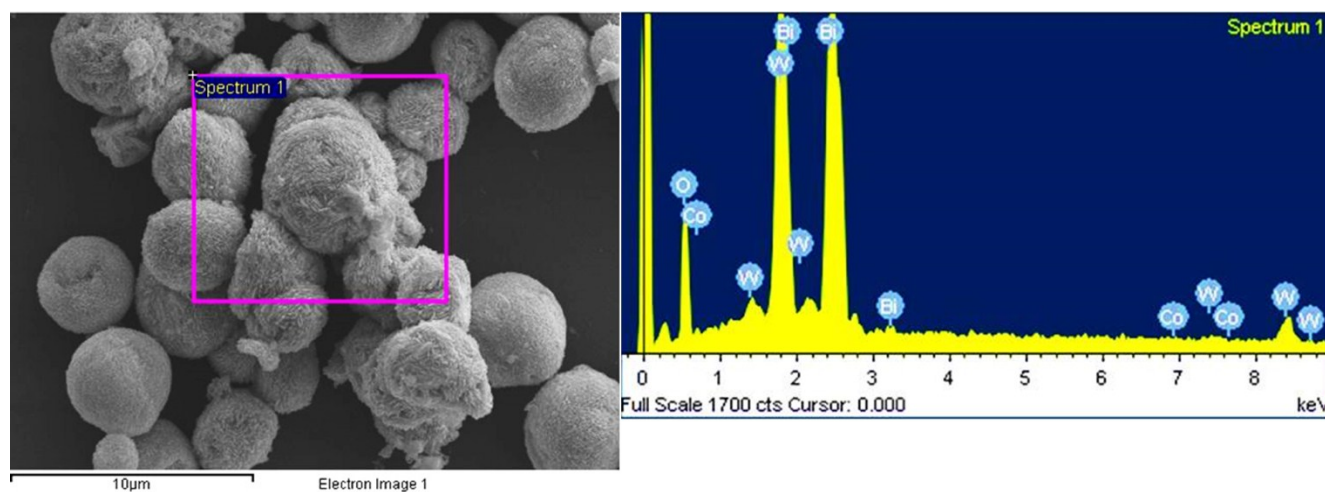


Figure S3. EDS analysis for BW-Co-5 photocatalyst

Figure S4.

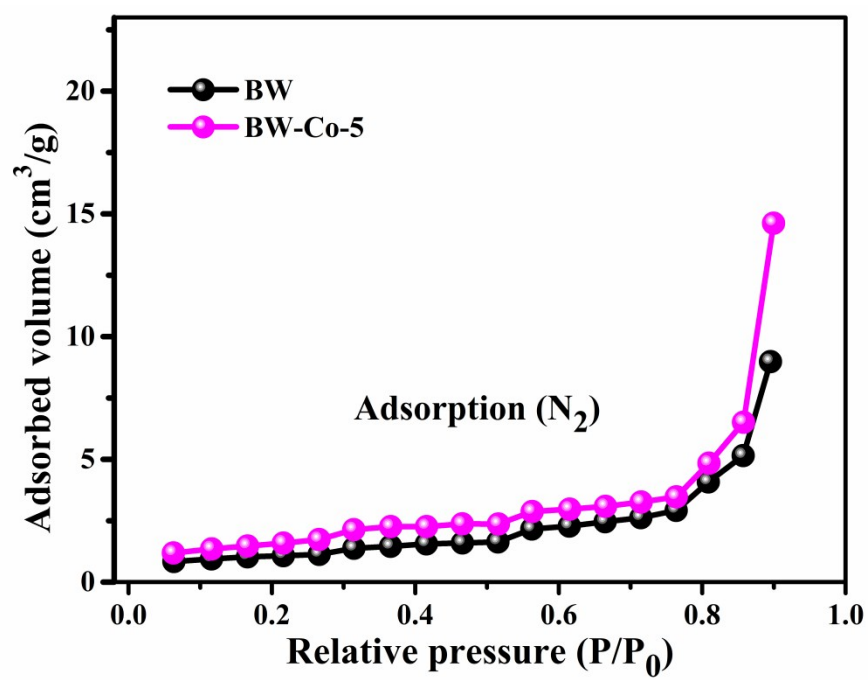


Figure S4. BET surface area of BW and BW-Co-5 photocatalysts

Figure S5.

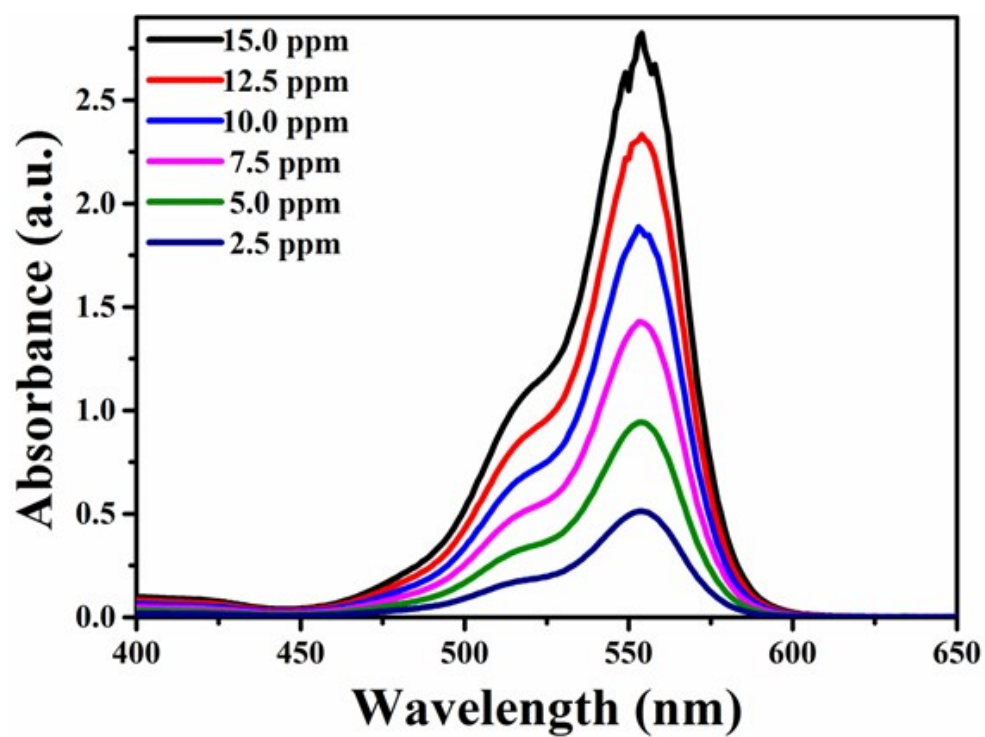


Figure S5. Absorbance spectra with different concentrations of RhB (15, 12.5, 10.0, 7.5, 5.0, and 2.5 ppm)