

Large-scale rapid detection of circulating microRNAs in plasma for diagnosis and screening of specific diseases

Han Ding ^{a*}, Yi An ^b, Tao Zhao ^c, Bing Liu ^d, Yin Wang ^a, Lei Zhang ^a, Yu Wang ^a, Yuan Zhang ^a,
Man Wang ^a, Yanhan Dong ^a, Longgang Hu ^b, Bu-Chang Zhao ^c, Peifeng Li ^a

- Institute for translational medicine, Medical college of Qingdao University, Dengzhou Road 38, Qingdao 266021, China
- The Affiliated Hospital of Qingdao University, Qing Dao, 266003, China.
- Buchang Pharma., Xi'an 710000, China
- State Key Laboratory of Bio-Fibers and Eco-Textiles, Qingdao University, Ningxia Road 308, Qingdao 266071, China.

Table S1 Sequence information of the oligonucleotides used in this study.

| Annotation | Sequence | Modification |
|------------------|---|--------------|
| SP HPN– thiol | TTTTTTCGCCCCGCGCA | 5'-SS C6 |
| SP HPN– Cy3 | TTTTTTCGCCCCGCGCA | 5'-Cy3 |
| HPN CP- 134-5 | TTTTTCCGCGCCCCCTCTGGTCAACCAGTCACA TTAATATATGCGCGGGCG | 5'-Amino C6 |
| miR-134- 5p | UGUGACUGGUUGACCAGAGGGG | |
| h19a-3 | UGUGCAAUAUCUAUGCAAACUGA | |
| h145-5 | GUCCAGUUUCCCCAGGAAUCCCU | |
| h197-5 | CGGGUAGAGAGGGCAGUGGGAGG | |
| miR-186- 5p | CAAAGAAUUCUCCUUUUGGGCU | |
| miR-30a- 3p-F | GGACCCUUUCAGUCGGAUGUUUG | |
| miR-30a- 5p-F | GGACCUGUAAACAUCCUCGACUG | |
| miR-21- 5p-F | GGACCUUAGCUUAUCAGACUGAUG | |

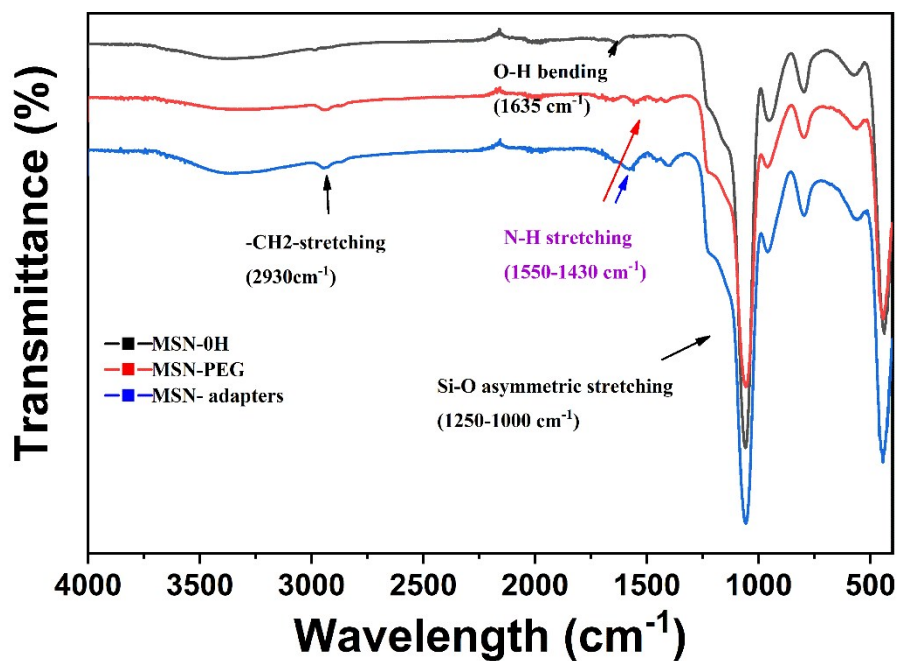


Figure S1 The FT-IR spectra of the MSN-OH (black), MSN-PEG (red) and MSN-adapters (blue).

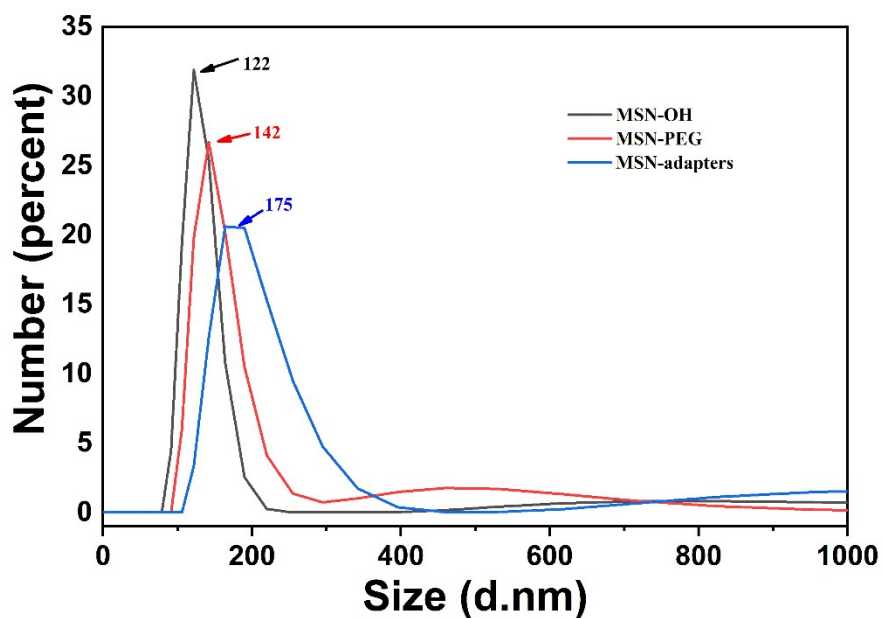


Figure S2 The DLS characterization of particle size of probe materials of the MSN-OH (black), MSN-PEG (red) and MSN-adapters (blue).

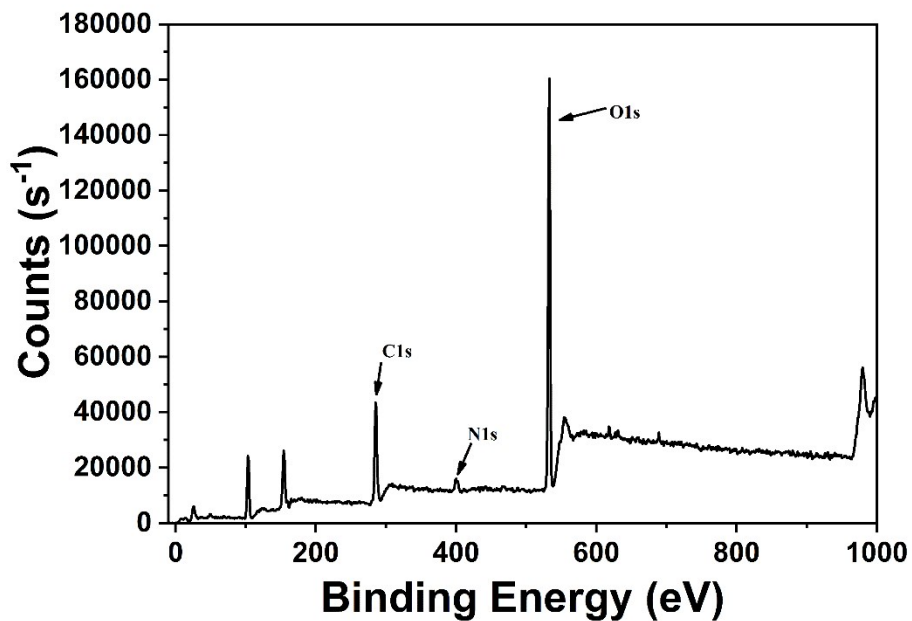


Figure S3 The XPS survey spectra of the surface functional groups on the probe materials of the MSN-PEG.

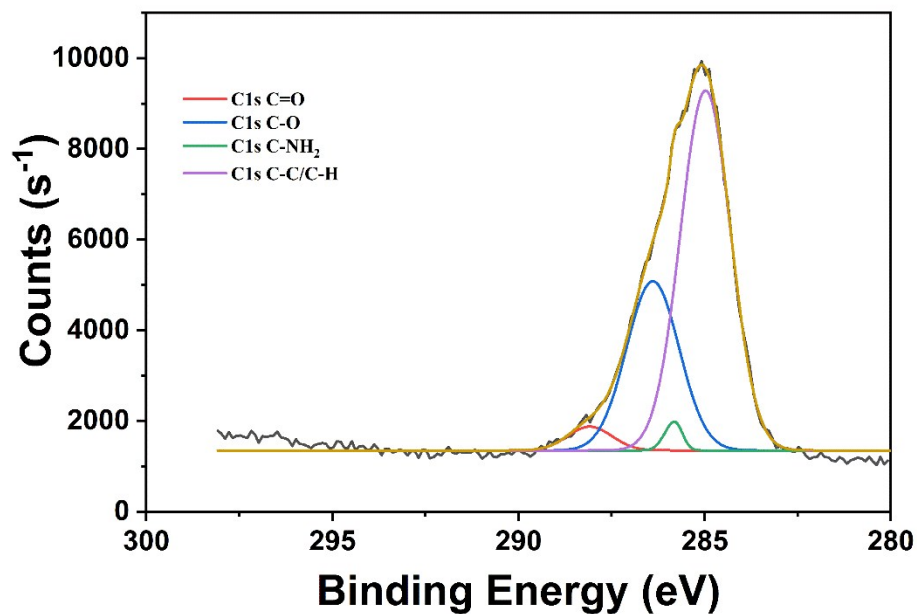


Figure S4 The XPS C1s spectra of the surface functional groups on the probe materials of the MSN-PEG.

Table S2. Analysis of C, N and H Elements in MSN-PEG and MSN-adapters by Element Analyzer.

| Sample | C (%) | N (%) | H (%) |
|----------------------|-------------------------|-------------------------|-------------------------|
| MSN-PEG | 17.3766765594482 | 1.57329344749451 | 5.10441541671753 |
| MSN- adapters | 15.555606842041 | 1.21618831157684 | 4.29622745513916 |