

Supporting Information

Plant-Derived Chlorophyll Derivatives Loaded Liposome for Tri-Model Imaging Guided Photodynamic Therapy

Hailin zhou^{a,b†}, Lu Xia^{b†}, Jing Zhong^b, Saisai Xiong^b, Xuan Yi^b, Lei chen^c, Ran Zhu^{b*}, Quanliang Shi^{a*}, Kai Yang^{b*}

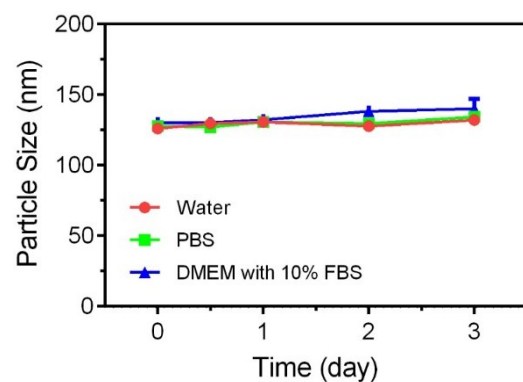
a. School of Medicine and Life Sciences, Medical College, Soochow University, Suzhou, Jiangsu 215123, China

b. State Key Laboratory of Radiation Medicine and Protection, School of Radiation Medicine and Protection and Interdisciplinary Sciences (RAD-X), Collaborative Innovation Center of Radiation Medicine of Jiangsu Higher Education Institutions, Soochow University, Suzhou, Jiangsu 215123, China.

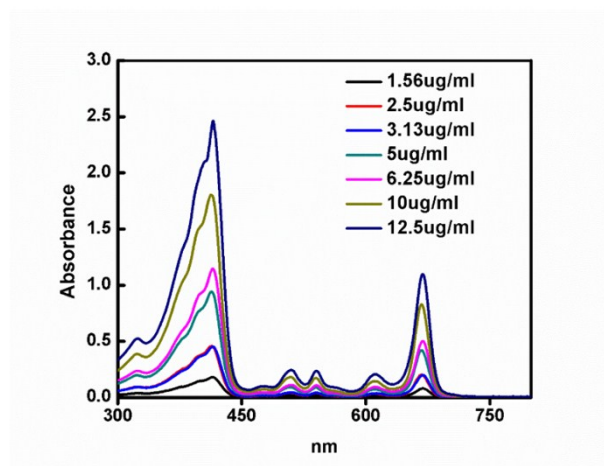
c. The Affiliated Suzhou Hospital of Nanjing Medical University, Suzhou, Jiangsu 215001, China.

† These authors contributed equally to this work.

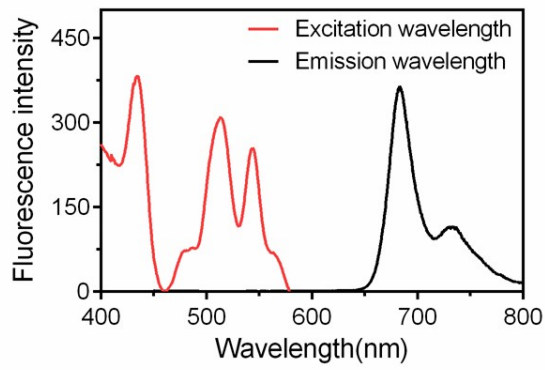
Corresponding authors Email: kyang@suda.edu.cn, zhuran@suda.edu.cn, shiquanliang@suda.edu.cn,



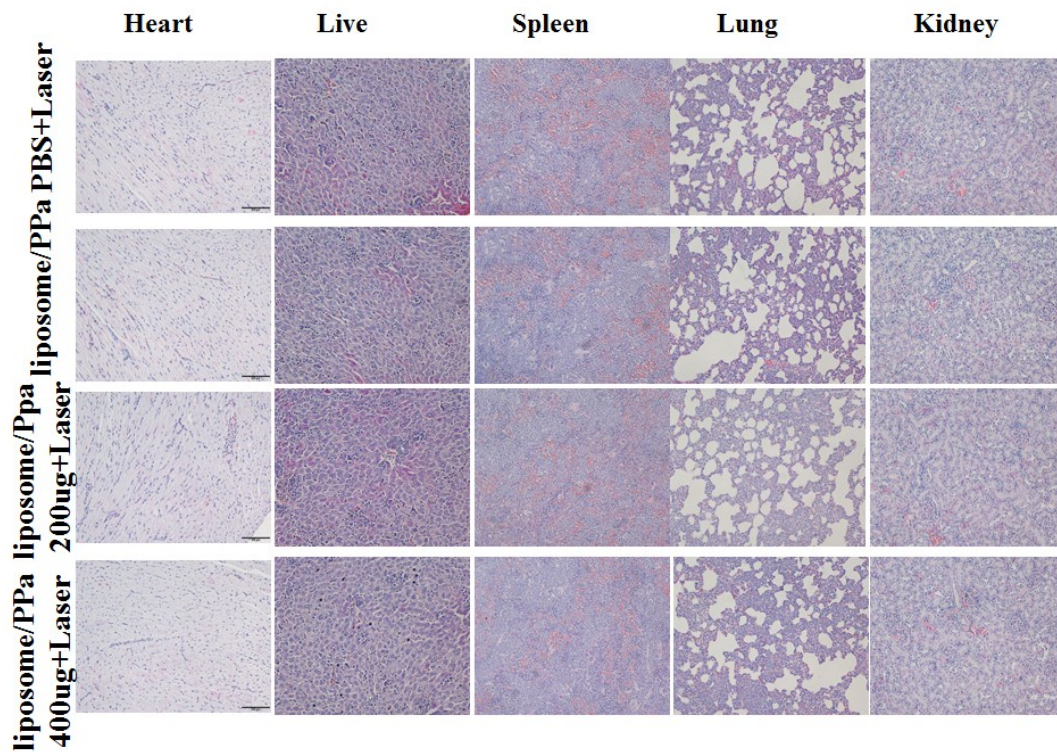
Supporting information figure S1. The stability of liposome/PPa nanoparticles in different liquid including pure water, phosphate buffered solution (PBS), and cell culture medium DMEM with 10% fetal bovine serum (FBS) in 72 h



Supporting information figure S2. The absorbance of different concentration of liposome/PPa nanoparticles.



Supporting information figure S3 The excitation and emission wavelengths of liposome/PPa were 530 nm and 670 nm, respectively.



Supporting information Figure S4. Representative H&E stained images of major organs including liver, spleen, kidney, lung and heart collected from the healthy mice and treated mice. The scale bar was 100 μ M.