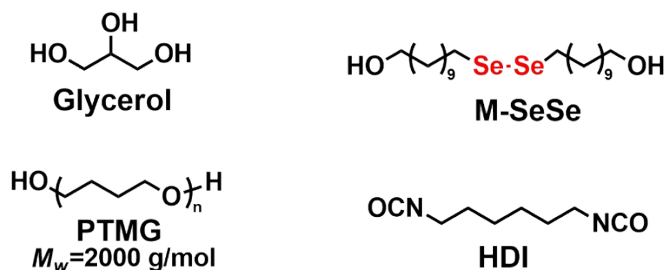


Supporting Information

Addition Figures



Scheme S1. Monomers used for the preparation of the elastomer.

Table S1. Young's modulus and swelling ratios of the different diselenide-containing polyurethanes in ethyl acetate.

	SeSe-0	SeSe-20	SeSe-40	SeSe-60
Young's modulus (MPa)	1.90	2.27	2.89	3.48
Swelling ratio	2.00	1.67	1.42	1.08

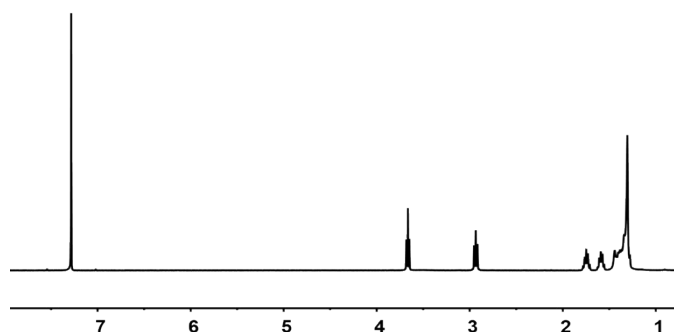


Fig. S1 ^1H NMR of M-SeSe

^1H NMR (400 MHz, CDCl₃) δ (ppm): 3.64 (4H, t, HOCH₂), 2.91 (4H, t, SeSeCH₂), 1.78-1.21 (36H, m, HOCH₂(CH₂)₉CH₂SeSe).

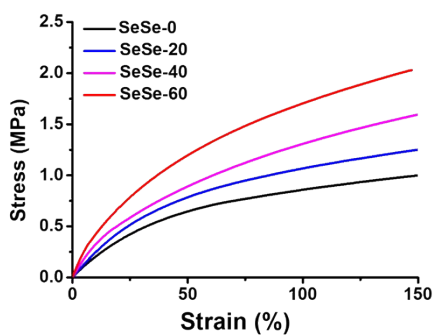


Fig. S2 The Stress-strain curves of different diselenide-containing polyurethanes.

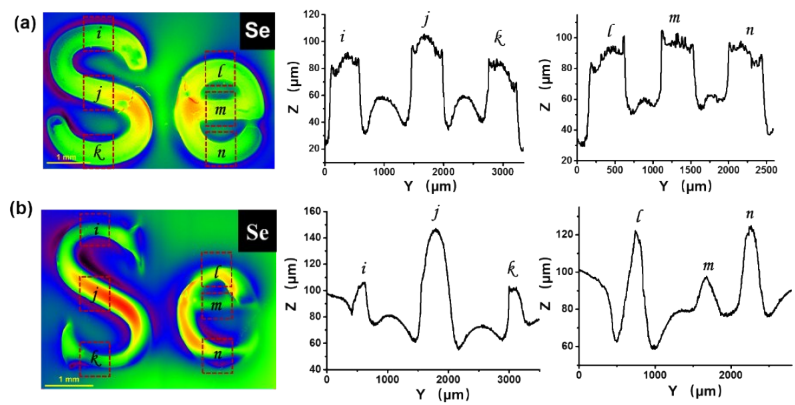


Fig. S3 The fluctuation of the patterns. a) Arial type face as the mask. b) Times New Roman type face as the mask.

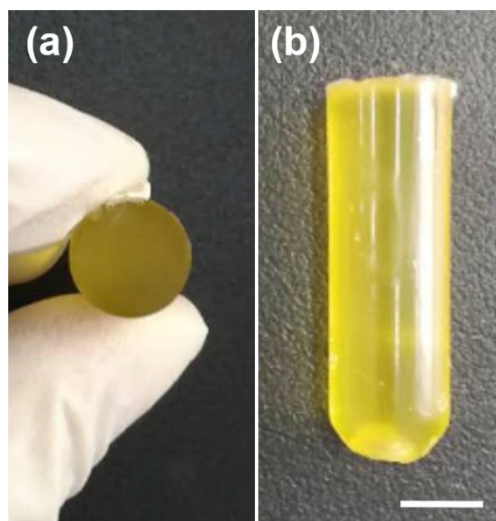


Fig. S4 Images of the cylindrical PUs corresponding to Figure 4c. a) Top view. b) Side Main Text Paragraph.