

Fig. S1. Radial distribution of negatively charged residues (Asp, Glu) around (a) paired and (b) unpaired arginines and (c) the ratio of the two distributions.

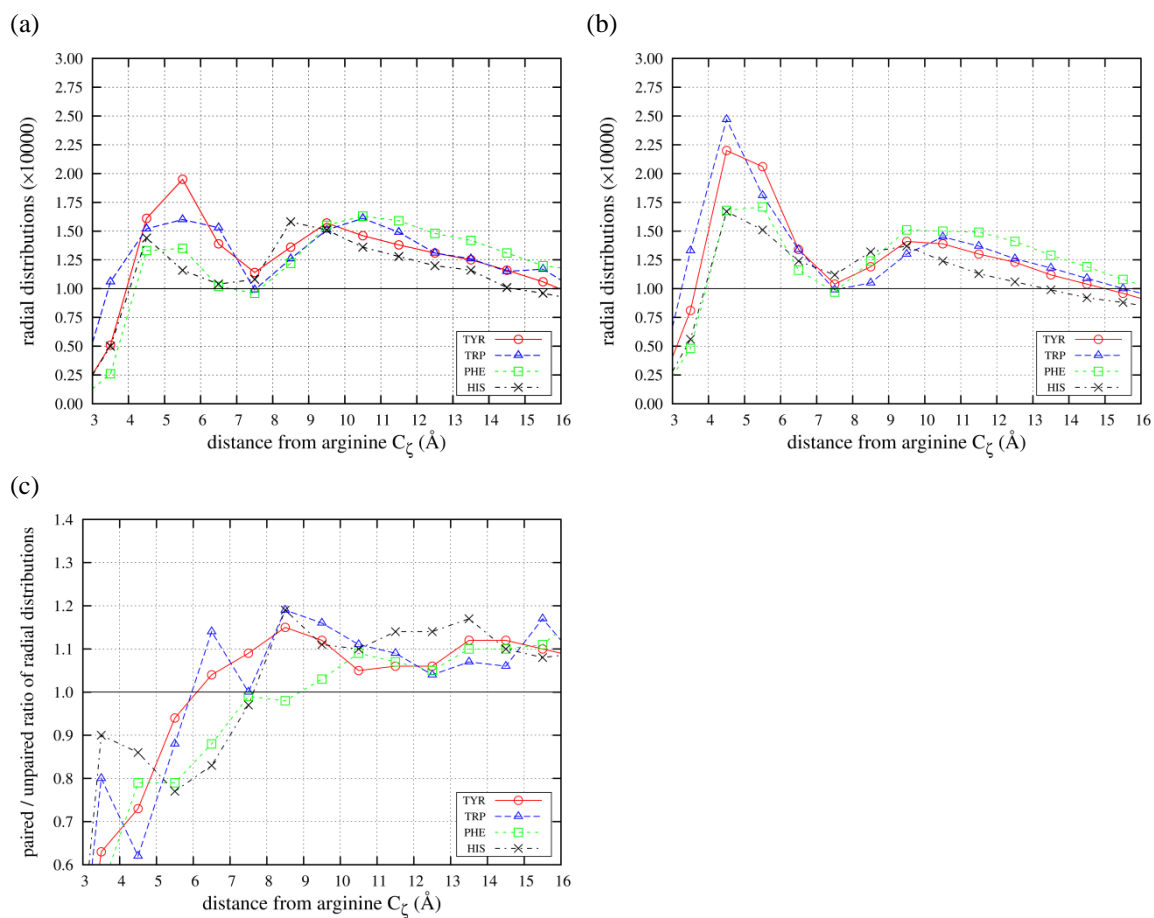


Fig. S2. Radial distribution of aromatic residues (Tyr, Trp, Phe, His) around (a) paired and (b) unpaired arginines and (c) the ratio of the two distributions.

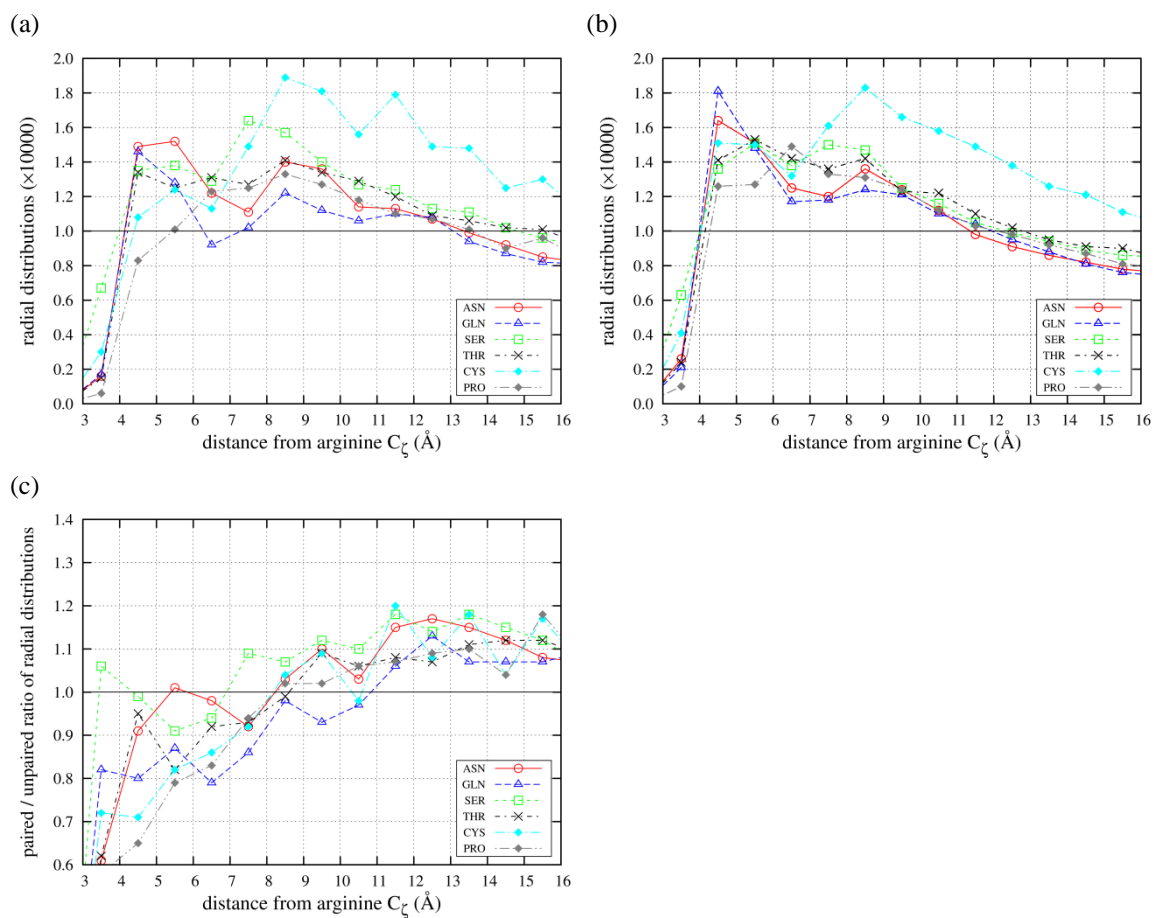


Fig. S3. Radial distribution of polar residues (Asn, Gln, Ser, Thr, Cys, Pro) around (a) paired and (b) unpaired arginines and (c) the ratio of the two distributions.

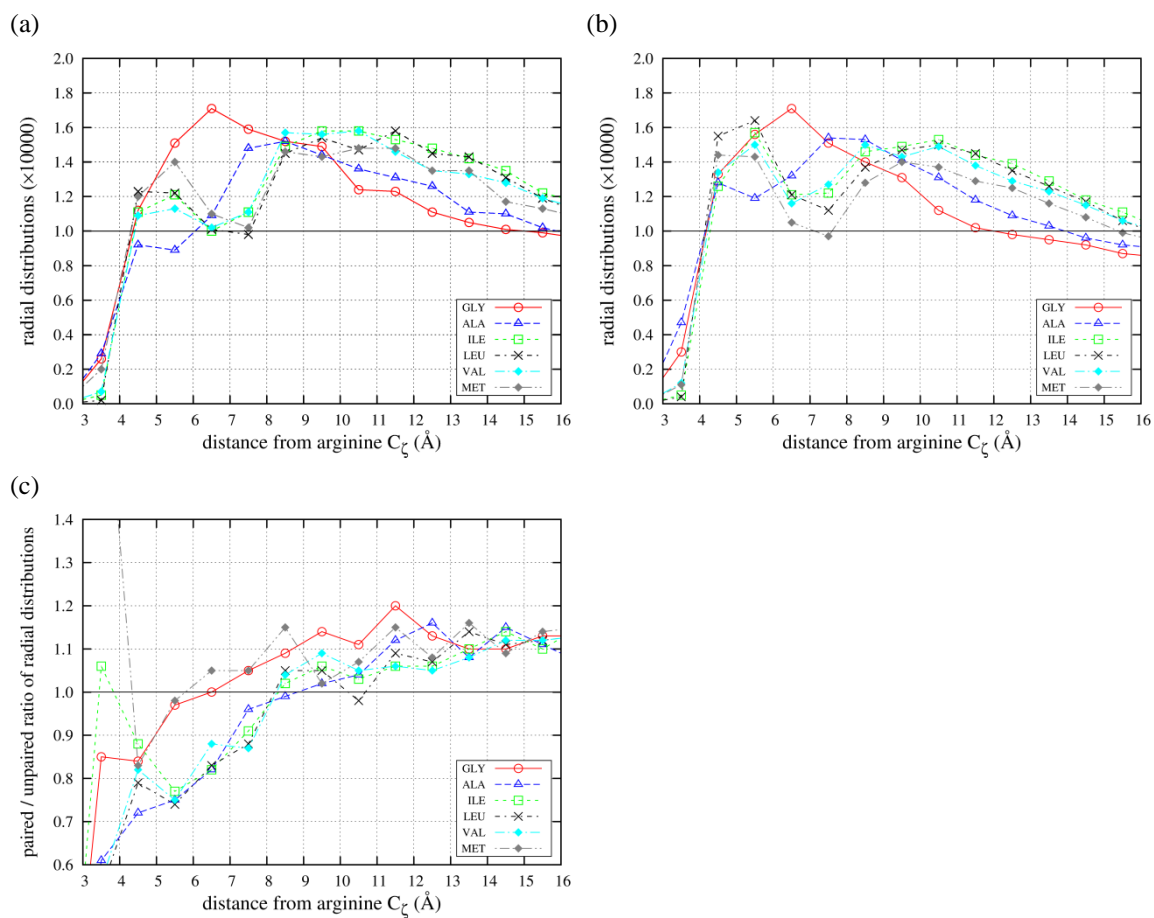


Fig. S4. Radial distribution of aliphatic residues (Gly, Ala, Ile, Leu, Val, Met) around (a) paired and (b) unpaired arginines and (c) the ratio of the two distributions.