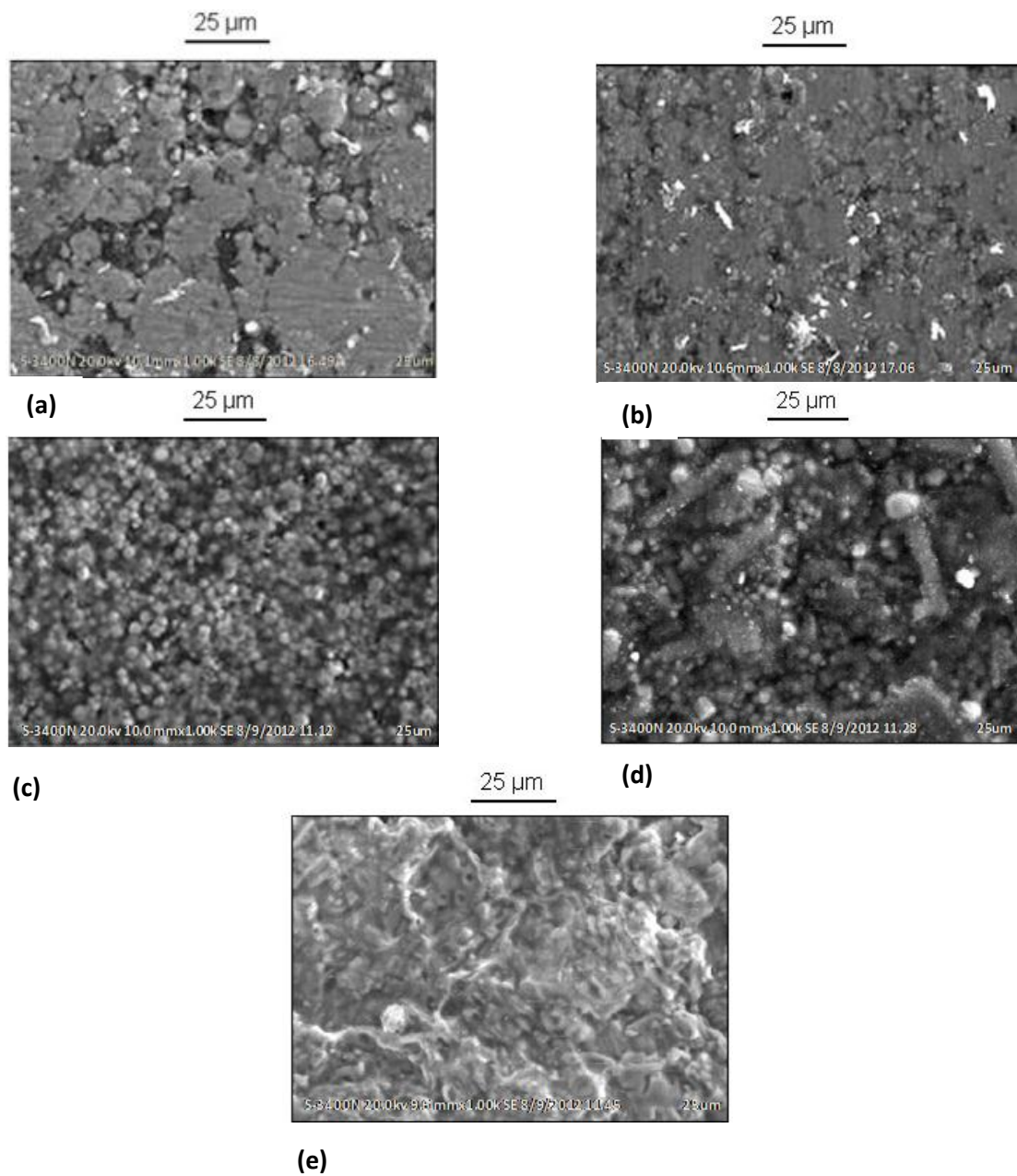


## Supporting Information

### Structure and $\text{Li}^+$ dynamics of Sb doped $\text{Li}_7\text{La}_3\text{Zr}_2\text{O}_{12}$ fast lithium ion conductors

*S. Ramakumar<sup>a</sup>, L. Satyanarayana<sup>b</sup>, Sunkara V. Manorama<sup>b</sup> and Ramaswamy Murugan<sup>\*cd</sup>*



**Figure S1.** Typical SEM images of  $\text{Li}_{7-x}\text{La}_3\text{Zr}_{2-x}\text{Sb}_x\text{O}_{12}$  prepared at 1100 °C with (a)  $x = 0.2$ , (b)  $x = 0.4$ , (c)  $x = 0.6$ , (d)  $x = 0.8$  and (e)  $x = 1.0$