

Electronic Supplementary Material (ESI) for

On a separation voltage polarity switching transient capillary isotachopheresis method for higher sample loading capacity and better separation performance

Ji Tang^a, Huanming Wu^{a,b,*}, Jun Jack Hu^{a,*}, Jiancheng Yu^b, Junliang Zhang^b, Chenlu Wang^a, Tao Yin^c, and Keqi Tang^{a,*}

^a Zhejiang Provincial Key Laboratory of Advanced Mass Spectrometry and Molecular Analysis, Institute of Mass Spectrometry, School of Material Science and Chemical Engineering, Ningbo University, Ningbo, 315211, P. R. China

^b Faculty of Electrical Engineering and Computer Science, Ningbo University, Ningbo 315211, P. R. China

^c Institute of Semiconductors, Chinese Academy of Sciences, Beijing, 100083, P. R. China

Corresponding Author

*E-mail: wuhuanming@nbu.edu.cn

*E-mail: hujun1@nbu.edu.cn

*E-mail: tangkeqi@nbu.edu.cn

The following supplementary tables and figure are included

Figure S1. Single PS-tCITP separation of five peptides standards mixture at the 100% sample loading with different polarity switching times of (A) 0 min, (B) 4 min, (C) 6 min, (D) 8 min, (E) 9 min, (F) 10 min, (G) 11 min, (H) 12 min and (I) 16 min.

Figure S2. Reproducibility of paused PS-tCITP separation from continuous three replicating experiments by using five peptides standards mixture at the 100% sample loading volume with different pause time of 0 min, 5 min, 10 min, 30 min and 100 min. (A) Migration window versus pause time. (B) Peak capacity versus pause time.

Table S1. The five peptides peak area and FWHM in different pause of (A) 0 min, (B) 5 min, (C) 10 min, (D) 30 min and (E) 100 min

Table S2. Standard deviation of paused PS-tCITP separation from continuous three replicating experiments by using five peptides standards mixture at the 100% sample loading volume with different pause time of 0 min, 5 min, 10 min, 30 min and 100 min.

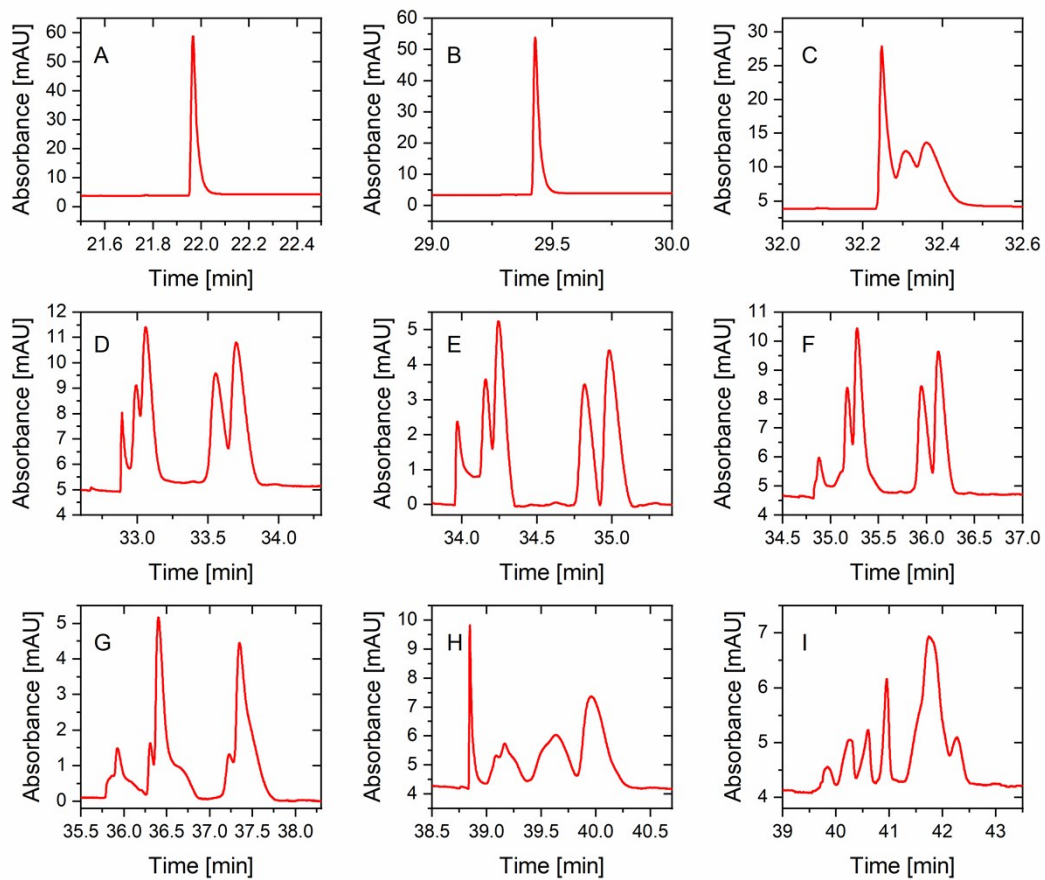


Figure S1. Single PS-tCITP separation of five peptides standards mixture at the 100% sample loading with different polarity switching times of (A) 0 min, (B) 4 min, (C) 6 min, (D) 8 min, (E) 9 min, (F) 10 min, (G) 11 min, (H) 12 min and (I) 16 min.

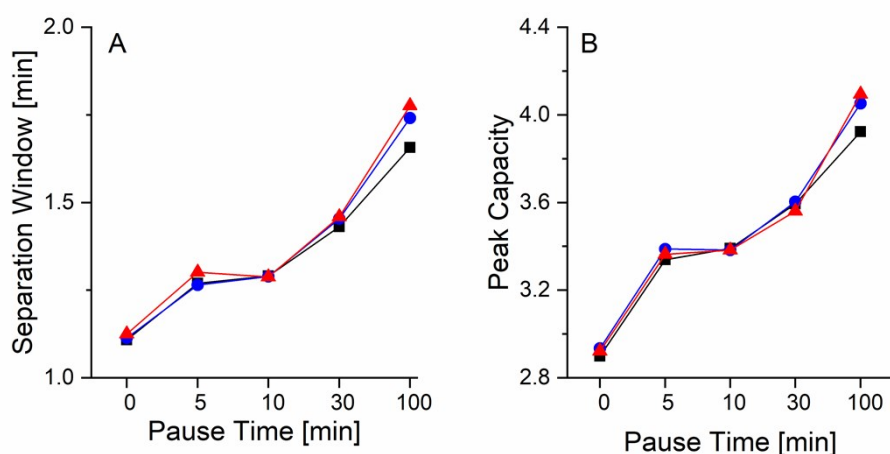


Figure S2. Reproducibility of paused PS-tCITP separation from continuous three replicating experiments by using five peptides standards mixture at the 100% sample loading volume with different pause time of 0 min, 5 min, 10 min, 30 min and 100 min. (A) Migration window versus pause time. (B) Peak capacity versus pause time.

Table S1. The five peptides peak area and FWHM in different pause of (A) 0 min, (B) 5 min, (C) 10 min, (D) 30 min and (E) 100 min

Index	Area					FWHM				
	Time(min)	0	5	10	30	100	0	5	10	30
kemptide	0.0419	0.0404	0.0431	0.0433	0.0411	0.0584	0.0503	0.0526	0.0564	0.0791
bradykinin	0.1554	0.1264	0.1285	0.1397	0.1142	0.0635	0.0547	0.0543	0.0588	0.0746
angiotensin I	0.3669	0.3442	0.3199	0.3339	0.2551	0.0824	0.0786	0.0765	0.0784	0.0755
neurotensin	0.3112	0.3229	0.3096	0.3228	0.2886	0.0948	0.0962	0.0947	0.0978	0.0960
angiotensin II	0.4579	0.4609	0.4576	0.4445	0.4024	0.1045	0.1035	0.1026	0.1022	0.0961

Table S2. Standard deviation of paused PS-tCITP separation from continuous three replicating experiments by using five peptides standards mixture at the 100% sample loading volume with different pause time of 0 min, 5 min, 10 min, 30 min and 100 min.

index	Separation window					Peak capacity				
	0 min	5 min	10 min	30 min	100 min	0 min	5 min	10 min	30 min	100 min
1	1.108	1.269	1.290	1.432	1.657	2.899	3.338	3.391	3.595	3.924
2	1.113	1.265	1.289	1.454	1.741	2.935	3.388	3.382	3.605	4.053
3	1.125	1.301	1.288	1.460	1.776	2.921	3.363	3.382	3.561	4.094
STDEV.P(%)	0.7	1.6	0.1	1.2	5.0	1.5	2.0	0.4	1.9	7.3